

180008340

LINE	BEARING	LENGTH
L1	S29°18'40"E	50.00'
L2	S4°51'46"E	117.96'
L3	S84°27'21"W	98.85'
L4	N38°36'41"E	68.33'
L5	N20°03'57"E	36.97'
L6	N56°29'04"W	51.13'
L7	S38°36'41"W	137.73'
L8	S62°34'45"E	51.07'
L9	N42°41'08"E	65.70'
L10	N54°58'45"W	151.50'
L11	N49°33'22"W	135.47'
L12	N30°15'13"E	48.31'
L13	N57°11'07"E	26.58'

LINE	BEARING	LENGTH
L14	N28°16'36"E	27.94'
L15	N16°49'39"E	35.24'
L16	N70°11'33"E	20.71'
L17	N31°54'42"W	32.72'
L18	N0°59'11"W	88.67'
L19	S11°07'54"E	42.24'
L20	S24°49'48"W	27.92'
L21	S48°30'34"W	31.62'
L22	N85°38'05"W	34.35'
L23	N63°35'53"E	45.73'
L24	S12°26'48"E	53.55'
L25	S48°27'03"E	60.93'
L26	S41°32'57"W	116.08'

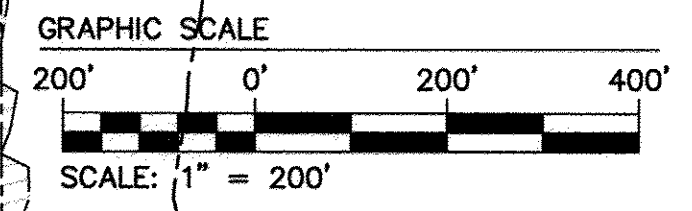
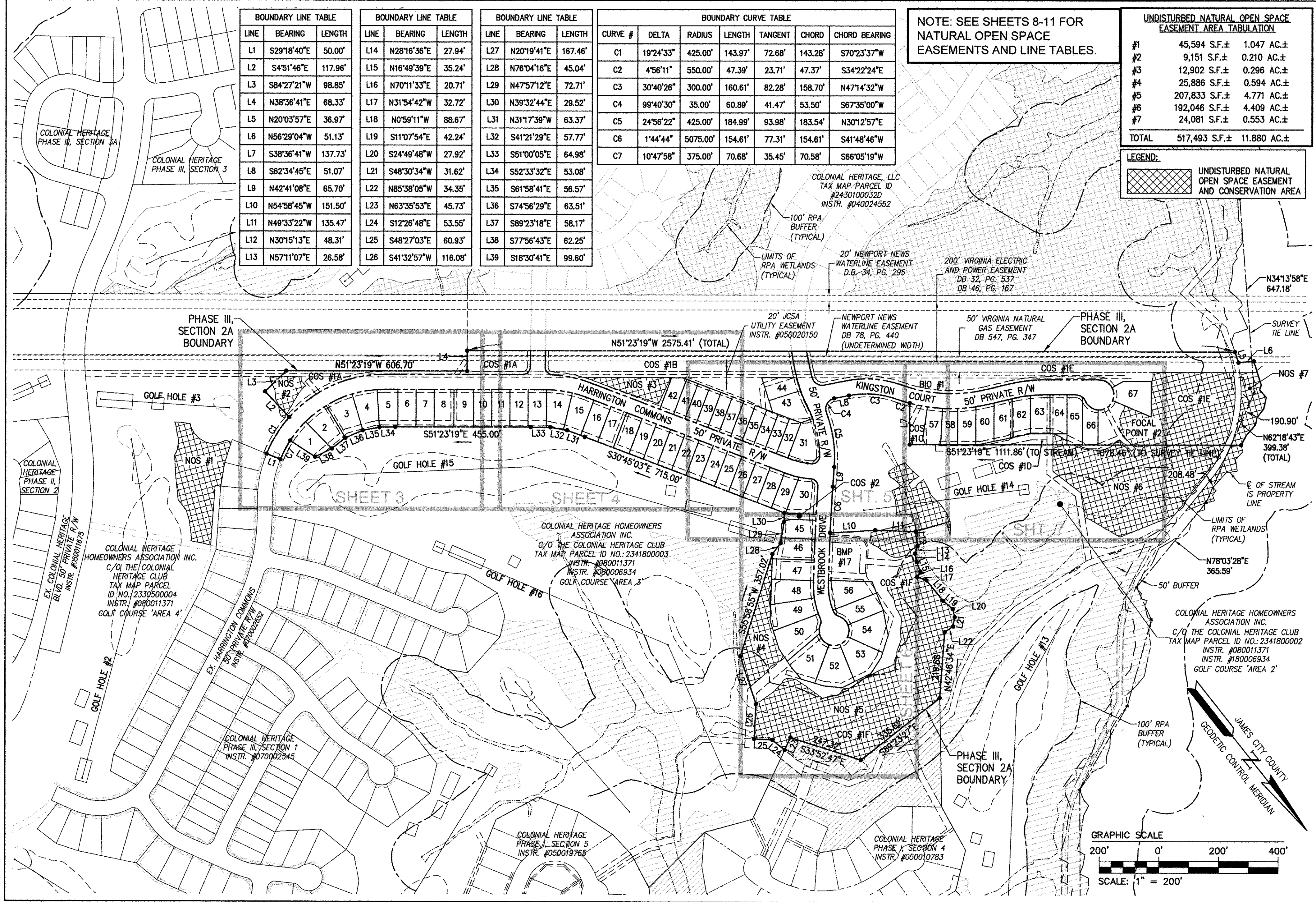
LINE	BEARING	LENGTH
L27	N20°19'41"E	167.46'
L28	N76°04'16"E	45.04'
L29	N47°57'12"E	72.71'
L30	N39°32'44"E	29.52'
L31	N31°17'39"W	63.37'
L32	S41°21'29"E	57.77'
L33	S51°00'05"E	64.98'
L34	S52°33'32"E	53.08'
L35	S61°58'41"E	56.57'
L36	S74°56'29"E	63.51'
L37	S89°23'18"E	58.17'
L38	S77°56'43"E	62.25'
L39	S18°30'41"E	99.60'

CURVE #	DELTA	RADIUS	LENGTH	TANGENT	CHORD	CHORD BEARING
C1	19°24'33"	425.00'	143.97'	72.68'	143.28'	S70°23'37"W
C2	4°56'11"	550.00'	47.39'	23.71'	47.37'	S34°22'24"E
C3	30°40'26"	300.00'	160.61'	82.28'	158.70'	N47°14'32"W
C4	99°40'30"	35.00'	60.89'	41.47'	53.50'	S67°35'00"W
C5	24°56'22"	425.00'	184.99'	93.98'	183.54'	N30°12'57"E
C6	1°44'44"	5075.00'	154.61'	77.31'	154.61'	S41°48'46"W
C7	10°47'58"	375.00'	70.68'	35.45'	70.58'	S66°05'19"W

NOTE: SEE SHEETS 8-11 FOR NATURAL OPEN SPACE EASEMENTS AND LINE TABLES.

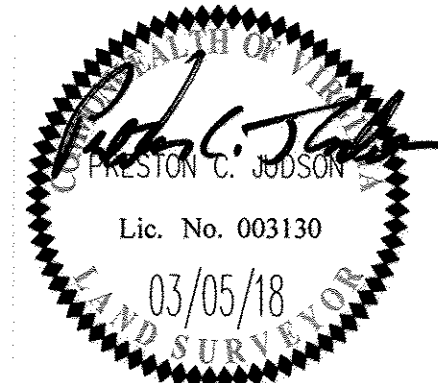
UNDISTURBED NATURAL OPEN SPACE EASEMENT AREA TABULATION			
#1	45,594 S.F.±	1.047 AC.±	
#2	9,151 S.F.±	0.210 AC.±	
#3	12,902 S.F.±	0.296 AC.±	
#4	25,886 S.F.±	0.594 AC.±	
#5	207,833 S.F.±	4.771 AC.±	
#6	192,046 S.F.±	4.409 AC.±	
#7	24,081 S.F.±	0.553 AC.±	
TOTAL	517,493 S.F.±	11.880 AC.±	

LEGEND:
 UNDISTURBED NATURAL OPEN SPACE EASEMENT AND CONSERVATION AREA



City of Williamsburg & County of James City
 Circuit Court: This PLAT was recorded on
 May 8 2018
 at 3:04 AM/PM, PG
 Document # 180008340
 MONA A. FOLEY, CLERK

Large/Small Plat(s) Recorded
 herewith as # 180008340



5248 Olde Towne Road, Suite 1
 Williamsburg, Virginia 23188
 Phone: (757) 253-0040
 Fax: (757) 220-8994
 www.aesva.com

PLAT OF SUBDIVISION
 LOTS 1 THRU 67, COS #1A, #1B, #1C, #1D, #1E, #1F
 AND COS #2
**COLONIAL HERITAGE
 PHASE III - SECTION 2A**
 OWNER / DEVELOPER: COLONIAL HERITAGE, LLC
 STONEHOUSE DISTRICT JAMES CITY COUNTY VIRGINIA

Project Contacts: PCJ/TRS
 Project Number: 8881-32A
 Scale: 1"=200' Date: 10/23/17
 Sheet Number
2 of 11

S:\0888132A\Phase III\Survey\Plat\Phase III - Section 2A\8881-32D Pl III 2A.dwg, 4/16/2018 8:38:29 AM, rcs.svs