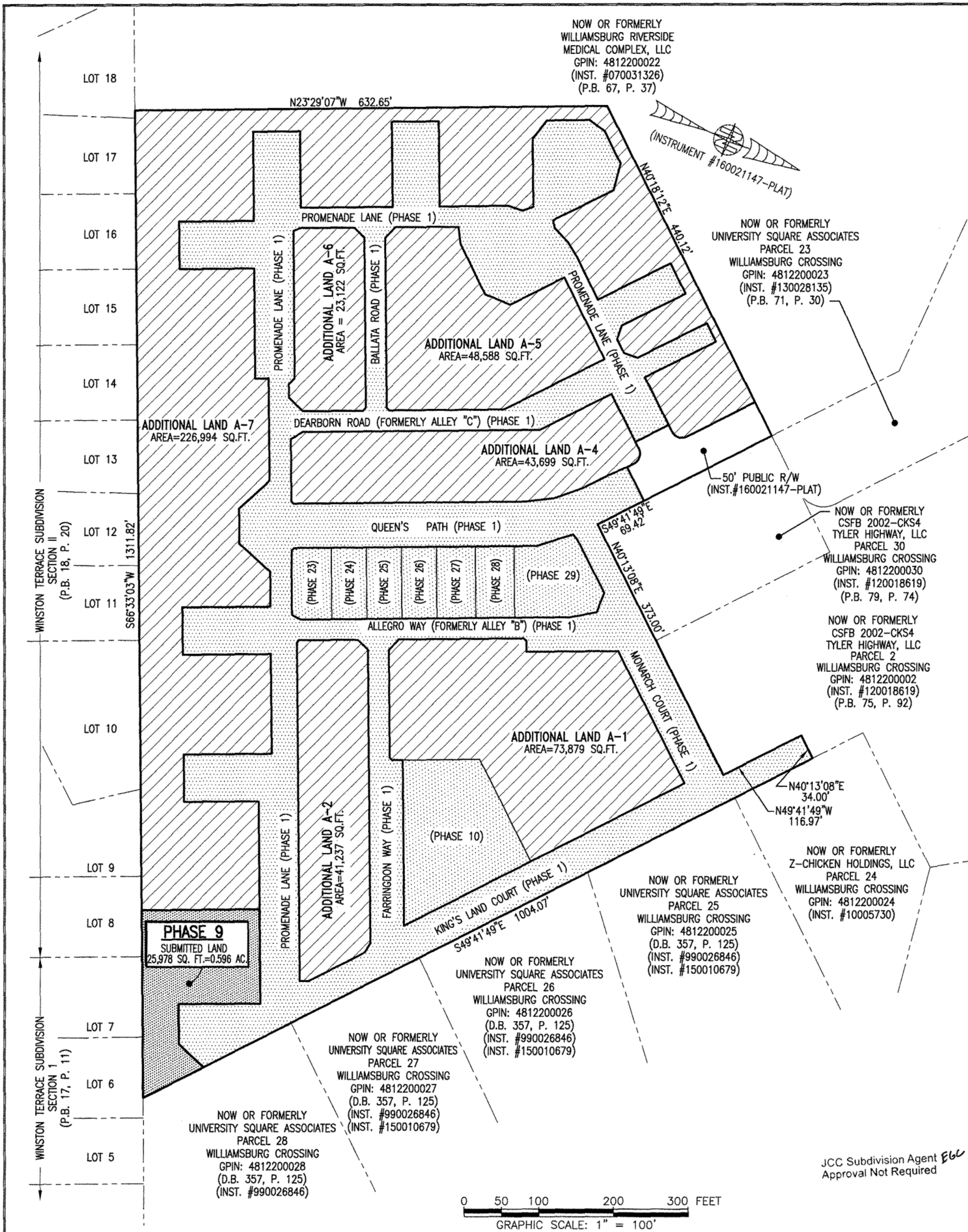
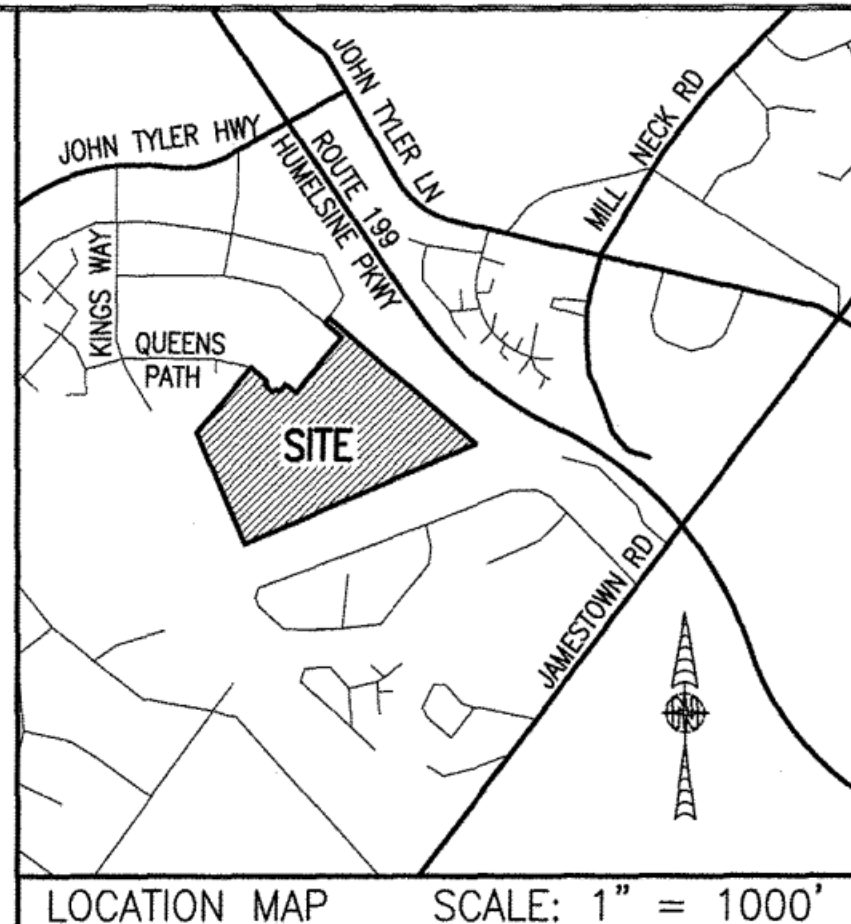


180003694



I HEREBY CERTIFY THAT THIS PLAT IS ACCURATE AND THAT IT COMPLIES WITH THE PROVISIONS OF THE CODE OF VIRGINIA OF 1950 AS AMENDED, § 55-79.58 AND I FURTHER CERTIFY THAT ALL IMPROVEMENTS THEREOF DEPICTED HEREON, PURSUANT TO THE CODE OF VIRGINIA § 55-79.58A, ARE SUBSTANTIALLY COMPLETE.



AREA TABLE				
PHASE	BLDG#	STATUS/RECORDATION	SQUARE FEET	ACRES
1	N/A	INSTR. #170011679	268,468	6.163
9	9	SUBSTANTIALLY COMPLETE	25,978	0.596
10	10	INSTR. #170023466	25,806	0.592
23	23	INSTR. #180001768	5,014	0.115
24	24	NOT YET RECORDED	4,464	0.102
25	25	INSTR. #180001779	4,466	0.103
26	26	INSTR. #170021156	4,465	0.102
27	27	INSTR. #170021157	4,944	0.114
28	28	INSTR. #180001781	4,936	0.113
29	29	NOT YET RECORDED	10,569	0.243
REMAINS OF ADDITIONAL LAND A-1			73,879	1.697
ADDITIONAL LAND A-2			41,237	0.947
ADDITIONAL LAND A-4			43,699	1.003
ADDITIONAL LAND A-5			48,588	1.115
ADDITIONAL LAND A-6			23,122	0.531
ADDITIONAL LAND A-7			226,994	5.211
TOTAL: NEW PARCEL 29			816,629	18.747

LEGAL DESCRIPTION  
PROPERTY SHOWN HEREON BEING "NEW PARCEL 29" CONTAINING 18.747 ACRES AS SHOWN ON "PLAT OF LOT LINE EXTINGUISHMENT BEING PARCELS 20 AND 29 OF WILLIAMSBURG CROSSING" PREPARED BY AES CONSULTING ENGINEERS, DATED 10-24-16 AND RECORDED AS INSTRUMENT NO. 160021147.

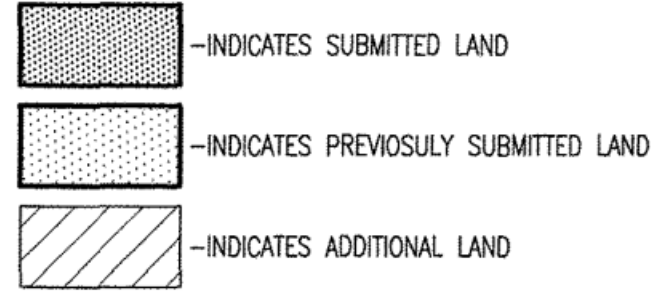
- NOTES:
- PHASE 9 BUILDING 9 IS SUBSTANTIALLY COMPLETE.
  - EASEMENTS AND BUILDING LINES SHOWN HEREON PER THE FOLLOWING:
    - ALTA SURVEY BY AES CONSULTING ENGINEERS, DATED 3-23-15
    - PLAT BY AES CONSULTING ENGINEERS, DATED 10-24-16, INST. #160021147
    - PLAN OF DEVELOPMENT BY AES CONSULTING ENGINEERS, DATED 9-8-16

SHEET INDEX:

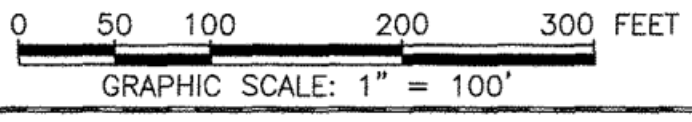
SHEET 1 OF 5:	OVERALL SITE LAYOUT AND AREAS
SHEET 2 OF 5:	PROPERTY DATA, EASEMENTS, CURVE AND LINE TABLE
SHEET 3 OF 5:	BUILDING DETAIL
SHEET 4 OF 5:	FOUNDATION PLAN AND SECTION
SHEET 5 OF 5:	FLOOR PLANS

5 Large/Small Plat(s) Recorded herewith as # 180003694

City of Williamsburg & County of James City  
Circuit Court: This PLAT was recorded on Feb. 20, 2018  
at 11:05 AM, PG. 1  
Document # 180003694  
MONA A. FOLEY, CLERK  
Mona A. Foley, Clerk



JCC Subdivision Agent E66 Approval Not Required



THIS SHEET: OVERALL SITE LAYOUT AND AREAS

**PHASE 9**  
**CONDOMINIUM PLAT AND PLAN**  
OF  
**THE PROMENADE**  
AT  
**JOHN TYLER**  
A CONDOMINIUM  
JAMES CITY COUNTY, VIRGINIA

Hayden Frye and Associates, Inc.  
**Land Surveyors**  
333 KELLAM ROAD, SUITE 200  
VIRGINIA BEACH, VA, 23462  
PH: (757) 491-7228 FX: (757) 491-7229

DATE: FEBRUARY 13, 2018  
SCALE: 1"=100'  
SHEET 1 OF 5 THIS PHASE