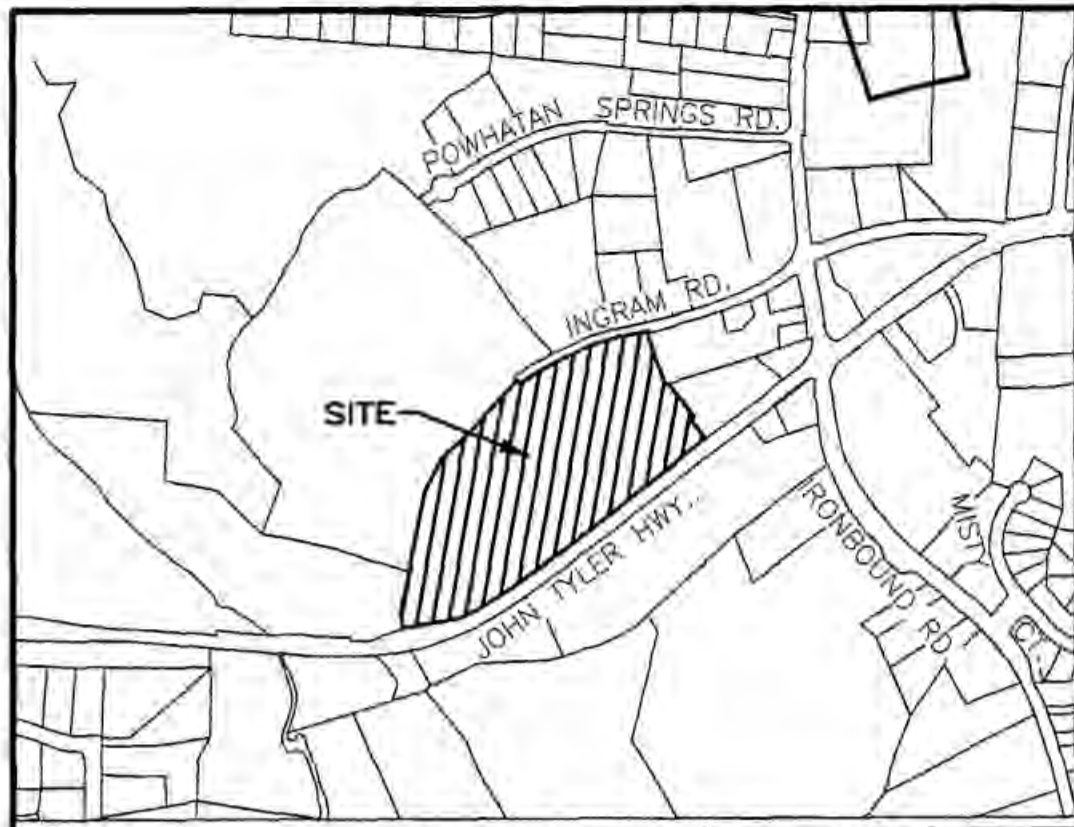
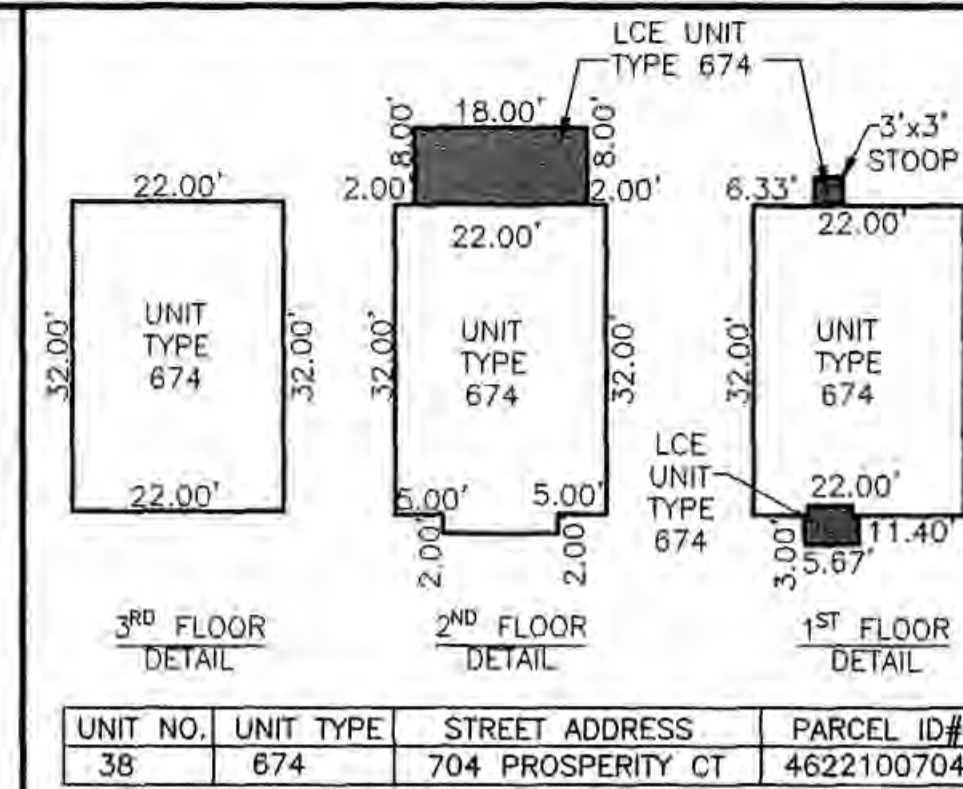


180003442



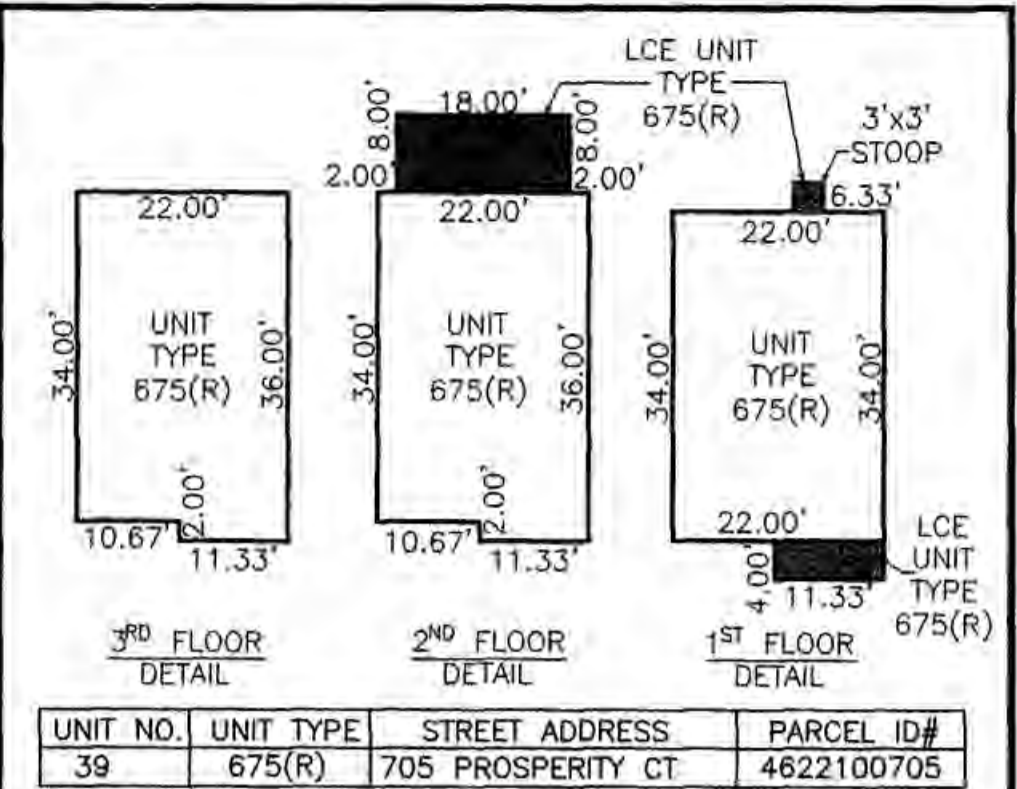
VICINITY MAP - NOT TO SCALE

PARCEL	SQ. FT.	ACRES
PHASE 12B SUBMITTED LAND	9,467	0.217
PREVIOUSLY SUBMITTED LAND	426,553	9.792
ADDITIONAL LAND	217,216	4.987
TOTAL	653,236	14.996



UNIT NO.	UNIT TYPE	STREET ADDRESS	PARCEL ID#
38	674	704 PROSPERITY CT	4622100704

■ LCE = LIMITED COMMON ELEMENT

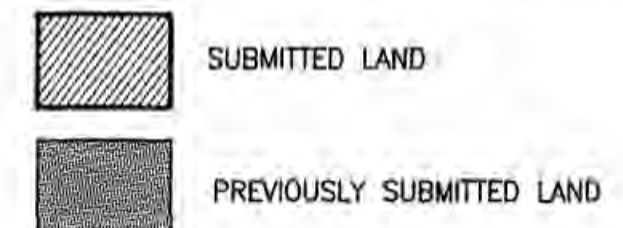
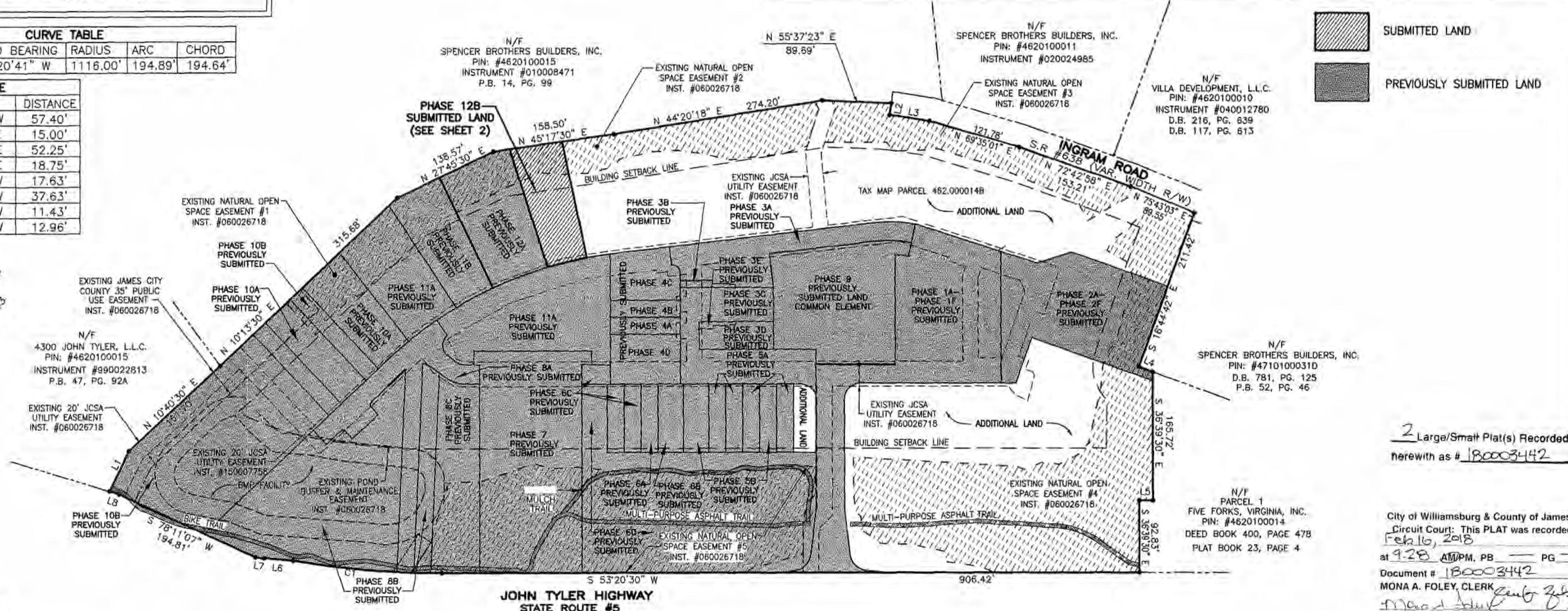


UNIT NO.	UNIT TYPE	STREET ADDRESS	PARCEL ID#
39	675(R)	705 PROSPERITY CT	4622100705

■ LCE = LIMITED COMMON ELEMENT

NO.	DELTA	CHORD BEARING	RADIUS	ARC	CHORD
C1	10°00'21"	S 58°20'41" W	1116.00'	194.89'	194.64'

NO.	DIRECTION	DISTANCE
L1	N 10°44'30" W	57.40'
L2	S 27°48'08" E	15.00'
L3	N 62°11'52" E	52.25'
L4	N 73°15'18" E	18.75'
L5	S 53°20'30" W	17.63'
L6	S 58°14'37" W	37.63'
L7	S 60°24'36" W	11.43'
L8	S 70°12'23" W	12.96'



2 Large/Small Plat(s) Recorded herewith as # 180003442

N/F PARCEL 1 FIVE FORKS, VIRGINIA, INC. PIN: #4620100014 DEED BOOK 400, PAGE 478 PLAT BOOK 23, PAGE 4

City of Williamsburg & County of James City Circuit Court: This PLAT was recorded on Feb 10, 2018 at 9:28 AM PM, PB PG Document # 180003442 MONA A. FOLEY, CLERK

- GENERAL NOTES**
- THIS PLAT WAS PRODUCED WITHOUT A TITLE REPORT AND MAY NOT REFLECT ALL MATTERS AFFECTING PROPERTY.
 - THIS PROPERTY APPEARS TO FALL IN ZONE "X" AS SHOWN ON FLOOD INSURANCE RATE MAP 51095C0119D, DATED DECEMBER 16, 2015.
 - ALL UNITS TO BE SERVED BY PUBLIC WATER AND SEWER.
 - ALL LAND AND IMPROVEMENTS OUTSIDE OF BUILDINGS AND WITHIN PHASE LIMITS SHALL BE KNOWN AS COMMON ELEMENT EXCEPT FOR LIMITED COMMON ELEMENTS DESIGNATED ON PLAT AND BUILDING PLANS.
 - THIS PARCEL OF LAND WAS CONVEYED TO GOVERNOR'S GROVE AT FIVE FORKS, L.L.C. BY DEED RECORDED IN INSTRUMENT #070006512.
 - THE STREETS WITHIN THIS CONDOMINIUM SHALL BE KNOWN AS COMMON ELEMENT AND NOT A PUBLIC DEDICATED RIGHT-OF-WAY.
 - PHASE 12B IS SUBMITTED LAND. THE REMAINING PROPERTY HAS BEEN PREVIOUSLY SUBMITTED OR IS ADDITIONAL LAND. ALL ADDITIONAL LAND AND ALL COMMON ELEMENTS ARE WITHDRAWABLE LAND.
 - PROFFERED COVENANTS, RESTRICTIONS, AND CONDITIONS AFFECTING THIS PROPERTY HAVE BEEN RECORDED AS INST. #050019045.
 - THE LOCATION OF THE PRIVATE MULCH TRAIL AND THE ASPHALT MULTI-PURPOSE TRAIL ARE APPROXIMATE ONLY AND SUBJECT TO CHANGE.

SURVEYORS CERTIFICATE

I HEREBY CERTIFY THAT THE PLAN PREVIOUSLY RECORDED FOR GOVERNOR'S GROVE AT FIVE FORKS, A CONDOMINIUM AT INSTRUMENT NO. 160001088 ACCURATELY DEPICTS THE UNIT AND RELATED IMPROVEMENTS SHOWN AND THAT THEY COMPLY WITH THE CODE OF VIRGINIA OF 1950, AS AMENDED §55-79.58(B) AND ARE SUBSTANTIALLY COMPLETE.

I HEREBY CERTIFY THAT THIS PLAT IS ACCURATE AND THAT IT COMPLIES WITH THE CODE OF VIRGINIA OF 1950, AS AMENDED, §55-79.58, AND I FURTHER CERTIFY THAT ALL IMPROVEMENTS OR PORTIONS THEREOF DEPICTED HEREON, PURSUANT TO THE CODE OF VIRGINIA, §55-79.58(A), ARE SUBSTANTIALLY COMPLETE.

W.S. Felts
WILLIAM S. FELTS LIC. #3149
02/12/2018
DATE



JCC Subdivision Agent Approval Not Required E64

PLAT OF PHASE 12B GOVERNOR'S GROVE AT FIVE FORKS A CONDOMINIUM
 LOCATED IN THE BERKELEY DISTRICT JAMES CITY COUNTY, VIRGINIA
 DATE: 02/12/2018 SCALE: 1" = 100' JOB# 06-460 SHEET: 1 OF 2

LandTech Resources, Inc.
 Engineering & Surveying Consultants
 3925 Midlands Road, Williamsburg, VA 23188
 Phone: (757) 565-1677 Fax: (757) 565-0782
 web: landtechresources.com

180003442

SURVEYORS CERTIFICATE

I HEREBY CERTIFY THAT THE PLAN PREVIOUSLY RECORDED FOR GOVERNOR'S GROVE AT FIVE FORKS, A CONDOMINIUM AT INSTRUMENT NO. 160009184 ACCURATELY DEPICTS THE UNIT AND RELATED IMPROVEMENTS SHOWN AND THAT THEY COMPLY WITH THE CODE OF VIRGINIA OF 1950, AS AMENDED §55-79.58(B) AND ARE SUBSTANTIALLY COMPLETE.

I HEREBY CERTIFY THAT THIS PLAT IS ACCURATE AND THAT IT COMPLIES WITH THE CODE OF VIRGINIA OF 1950, AS AMENDED, §55-79.58, AND I FURTHER CERTIFY THAT ALL IMPROVEMENTS OR PORTIONS THEREOF DEPICTED HEREON, PURSUANT TO THE CODE OF VIRGINIA, §55-79.58(A), ARE SUBSTANTIALLY COMPLETE.

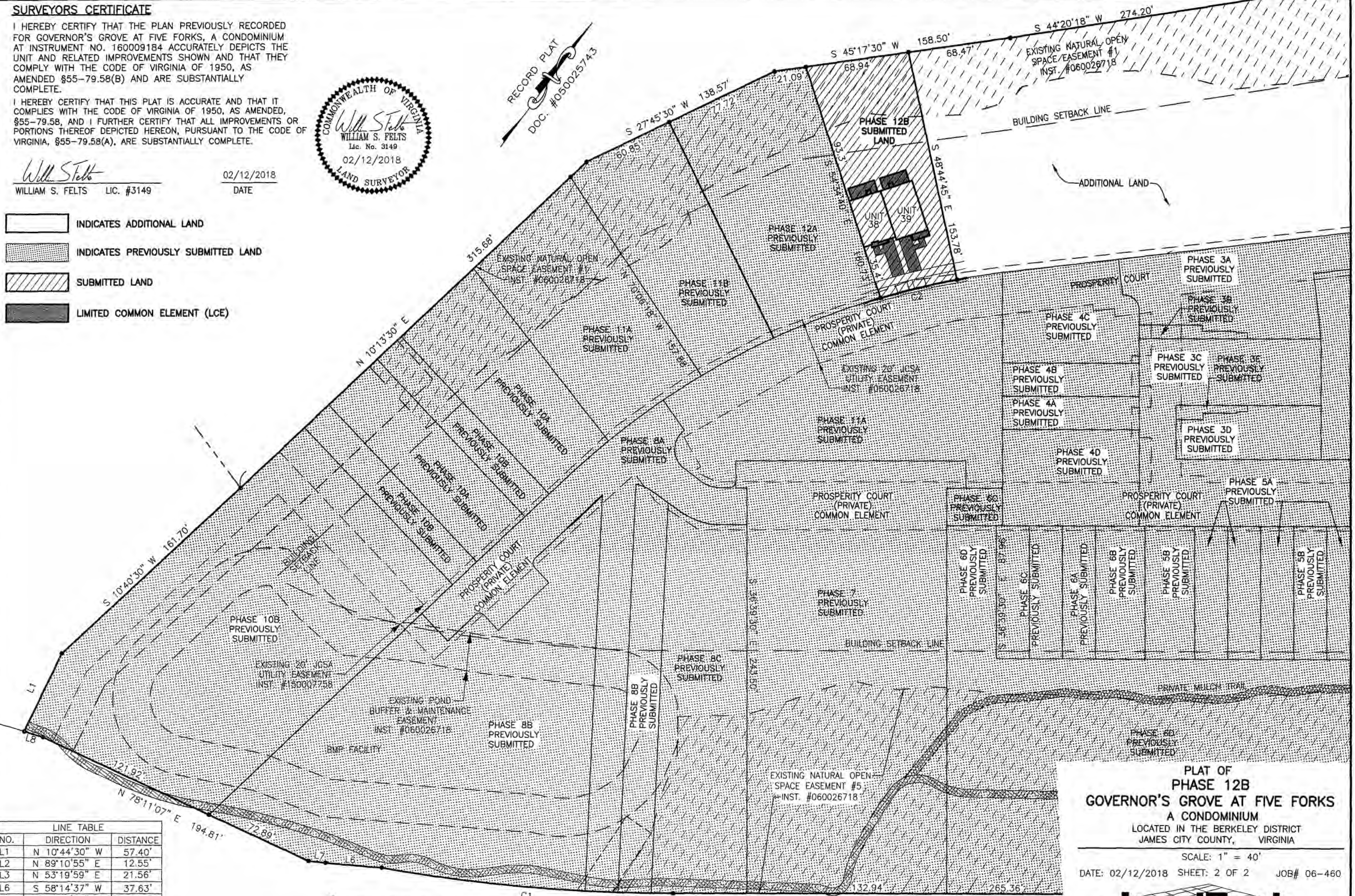


William S. Felts

WILLIAM S. FELTS LIC. #3149

02/12/2018
DATE

- INDICATES ADDITIONAL LAND
- INDICATES PREVIOUSLY SUBMITTED LAND
- SUBMITTED LAND
- LIMITED COMMON ELEMENT (LCE)



NO.	DIRECTION	DISTANCE
L1	N 10°44'30" W	57.40'
L2	N 89°10'55" E	12.55'
L3	N 53°19'59" E	21.56'
L6	S 58°14'37" W	37.63'
L7	S 60°24'36" W	11.43'
L8	S 70°12'23" W	12.96'

NO.	DELTA	CHORD BEARING	RADIUS	ARC	CHORD
C1	10°00'21"	S 58°20'41" W	1116.00'	194.89'	194.64'
C2	5°44'31"	S 39°52'24" W	523.62'	52.47'	52.45'

2 Large/Small Plat(s) Recorded
herewith as # 180003442

JOHN TYLER HIGHWAY
STATE ROUTE #5
(VARIABLE WIDTH PUBLIC R/W)

City of Williamsburg & County of James City
Circuit Court: This PLAT was recorded on
Feb. 16, 2018

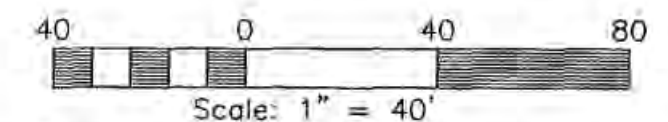
at 9:28 AM, PB PG
Document # 180003442
MONA A. FOLEY, CLERK
Mona Foley
Clerk

PLAT OF
PHASE 12B
GOVERNOR'S GROVE AT FIVE FORKS
A CONDOMINIUM
LOCATED IN THE BERKELEY DISTRICT
JAMES CITY COUNTY, VIRGINIA

SCALE: 1" = 40'
DATE: 02/12/2018 SHEET: 2 OF 2 JOB# 06-460

LandTech Resources, Inc.
Engineering & Surveying Consultants

3925 Midlands Road, Williamsburg, VA 23188
Phone: (757) 565-1677 Fax: (757) 565-0782
web: landtechresources.com

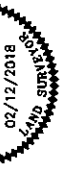


JCC Subdivision Agent *EBL*
Approval Not Required

SURVEYORS CERTIFICATE

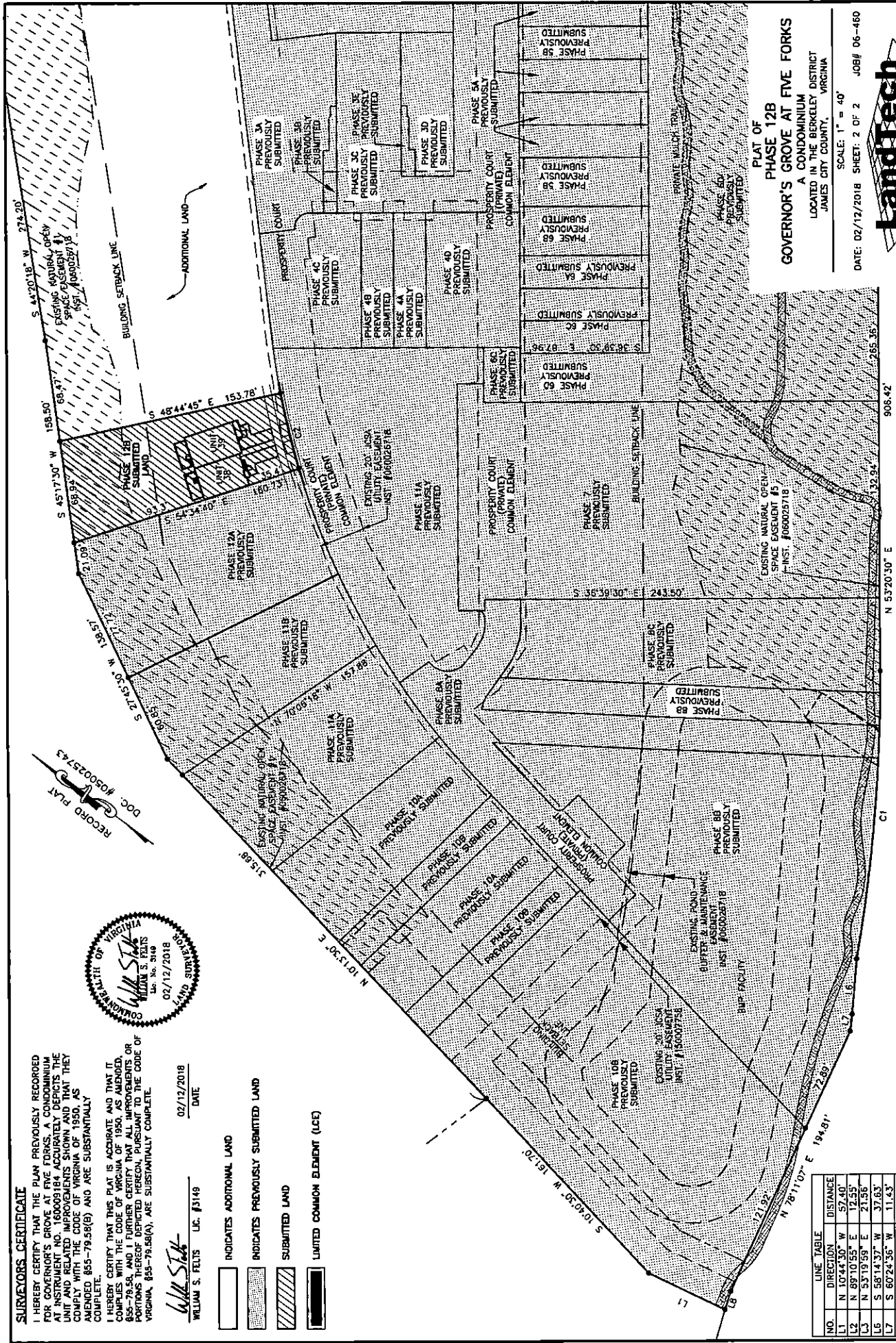
I HEREBY CERTIFY THAT THE PLAN PREVIOUSLY RECORDED FOR GOVERNOR'S GROVE AT FIVE FORKS A CONDOMINIUM UNIT AND RELATED IMPROVEMENTS SHOWN AND THAT THEY COMPLY WITH THE CODE OF VIRGINIA OF 1950, AS AMENDED 855-79.56(B) AND ARE SUBSTANTIALLY COMPLETE.

I HEREBY CERTIFY THAT THIS PLAN IS ACCURATE AND THAT IT COMPLIES WITH THE CODE OF VIRGINIA OF 1950, AS AMENDED, 855-79.56, AND I FURTHER CERTIFY THAT ALL IMPROVEMENTS OR PORTIONS THEREOF DEPICTED HEREON, PURSUANT TO THE CODE OF VIRGINIA, 855-79.56(A), ARE SUBSTANTIALLY COMPLETE.

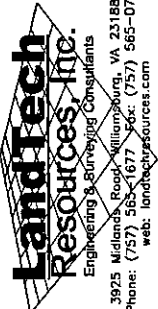


WILLIAM S. FELTS U.C. #3149
 DATE 02/12/2018
 SURVEYOR

- INDICATES ADDITIONAL LAND
- INDICATES PREVIOUSLY SUBMITTED LAND
- SUBMITTED LAND
- LIMITED COMMON ELEMENT (LCE)



PLAT OF
PHASE 12B
GOVERNOR'S GROVE AT FIVE FORKS
 A CONDOMINIUM DISTRICT
 LOCATED IN THE BERKELEY DISTRICT
 JAMES CITY COUNTY, VIRGINIA



DATE: 02/12/2018 SHEET: 2 OF 2 JOB# 06-460
 SCALE: 1" = 40'



JOHN TYLER HIGHWAY
 STATE ROUTE #5
 (VARIABLE WIDTH PUBLIC R/W)

NO.	DIRECTION	DISTANCE
L1	N 10°44'30" W	57.40'
L2	N 89°10'55" E	12.55'
L3	N 53°19'59" E	21.56'
L6	S 58°14'37" W	37.63'
L7	S 60°24'56" W	11.43'
L8	S 70°12'23" W	12.96'

NO.	DELTA	CHORD BEARING	RADIUS	ARC	CHORD
C1	10°00'21"	S 58°20'41" W	1116.00'	194.89'	194.64'
C2	5°48'31"	S 39°52'24" W	523.62'	52.47'	52.45'