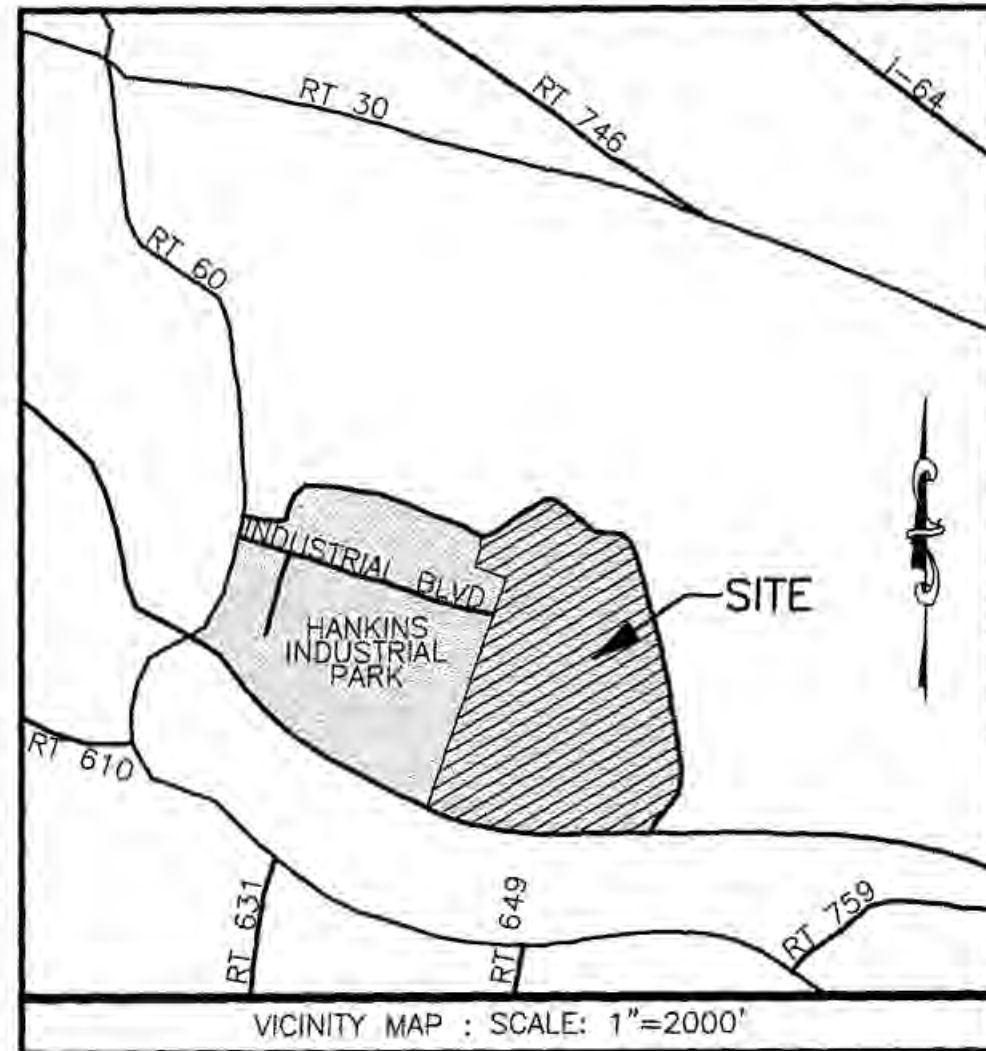


180001858



GENERAL NOTES

1. THIS PLAT WAS PRODUCED WITHOUT A TITLE REPORT AND MAY NOT REFLECT ALL MATTERS AFFECTING THE PROPERTY.
2. THIS PROPERTY APPEARS TO FALL IN ZONE "X" AS SHOWN ON FLOOD INSURANCE RATE MAP #51095C0043D, DATED DECEMBER 16, 2015.
3. ALL UNITS TO BE SERVED BY PUBLIC WATER AND SEWER.
4. ALL LAND AND IMPROVEMENTS OUTSIDE OF PHASE LIMITS SHALL BE KNOWN AS COMMON ELEMENT.
5. THE STREETS WITHIN THIS CONDOMINIUM SHALL BE KNOWN AS COMMON ELEMENT AND NOT A PUBLIC DEDICATED RIGHT-OF-WAY.
6. ALL IMPROVEMENTS SHOWN HEREON ARE SHOWN PER THE APPROVED SITE PLAN FOR PHASE 1 AND HAVE NOT BEEN FIELD VERIFIED.
7. THE PROPERTY SHOWN HEREON STANDS IN THE NAME OF SURIN, LLC AND WAS ACQUIRED FROM GARNET JACOBS INDUSTRIAL REAL ESTATE, LLC AUGUST 13, 2014 BY DEED RECORDED IN THE CLERKS OFFICE FOR THE CITY OF WILLIAMSBURG JAMES CITY COUNTY AS INSTRUMENT NUMBER 140013050.

PLAT OF JACOB'S INDUSTRIAL CENTER PARCEL 1 A CONDOMINIUM

BEING LOCATED IN THE STONEHOUSE DISTRICT
OF JAMES CITY COUNTY, VIRGINIA

DATE: 12-06-2017 SHEET: 1 OF 5 JOB #14-102



3925 Midlands Road Williamsburg, VA 23188
Ph: (757) 565-1677 Fax: (757) 565-0782
web: landtechresources.com

I HEREBY CERTIFY THAT THIS PLAT IS ACCURATE AND THAT IT COMPLIES WITH THE CODE OF VIRGINIA OF 1950, AS AMENDED, §§55-79.5B, AND I FURTHER CERTIFY THAT ALL IMPROVEMENTS OR PORTIONS THEREOF DEPICTED HEREON, PURSUANT TO THE CODE OF VIRGINIA, §§55-79.5B(A), ARE SUBSTANTIALLY COMPLETE.

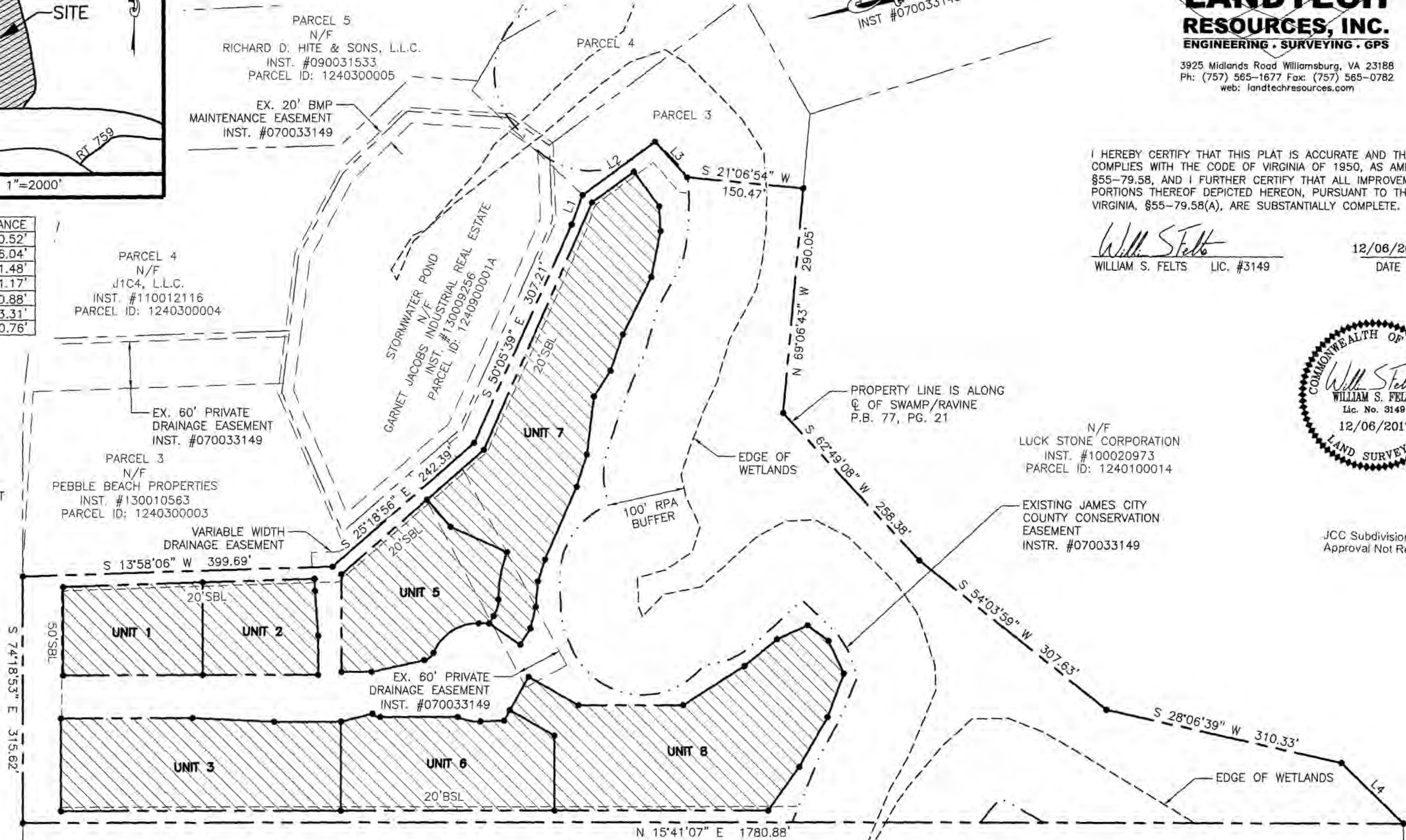
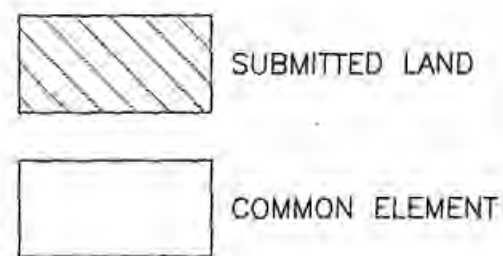
William S. Felts
WILLIAM S. FELTS LIC. #3149

12/06/2017
DATE



JCC Subdivision Agent Approval Not Required E6c

LINE	BEARING	DISTANCE
L1	S 53°54'49" E	40.52'
L2	S 20°26'20" E	116.04'
L3	S 63°50'38" W	61.48'
L4	S 59°36'49" W	111.17'
L5	N 41°44'24" W	10.88'
L6	N 16°21'04" E	13.31'
L7	S 13°23'28" W	30.76'



5 Large/Small Plat(s) Recorded
herewith as # 180001858

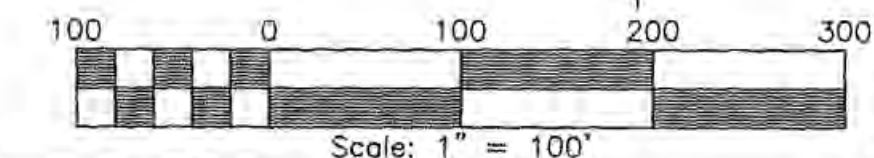
PARCELS A & B
N/F
OWENS-BROCKWAY GLASS CONTAINER, INC.
D.B. 492, PG. 352
PARCEL ID: 1240100015

City of Williamsburg & County of James City
Circuit Court: This PLAT was recorded on
Jan 23 2018
at 12:49 AM / PG
Document # 180001858
MONA A. FOLEY, CLERK
Mona Foley Clerk
John Hamble DC

AREA TABLE

PHASE	SQ. FT.	ACRES
SUBMITTED LAND UNITS 1-8	170,794	3.921
COMMON ELEMENT	510,871	11.728
TOTAL	681,665	15.649

CURVE	ARC LENGTH	RADIUS	DELTA ANGLE	CHORD BEARING	CHORD LENGTH
C1	62.14'	172.00'	20°42'01"	N 63°59'36" W	61.80'
C2	22.76'	40.00'	32°36'12"	S 58°02'30" E	22.46'
C3	73.66'	63.00'	66°59'40"	N 17°08'47" W	69.54'
C4	16.03'	17.00'	54°01'13"	S 23°38'00" E	15.44'
C5	10.84'	13.00'	47°45'52"	S 39°34'03" W	10.53'
C6	30.11'	63.00'	27°22'56"	S 27°04'56" W	29.82'



180001858

RECORD MERIDIAN
INST #070033149

PARCEL 3
N/F
PEBBLE BEACH PROPERTIES
INST. #130010563
PARCEL ID: 1240300003

PLAT OF
JACOB'S INDUSTRIAL CENTER PARCEL 1
A CONDOMINIUM
BEING LOCATED IN THE STONEHOUSE DISTRICT
OF JAMES CITY COUNTY, VIRGINIA

DATE: 12-06-2017 SHEET: 2 OF 5 JOB #14-102

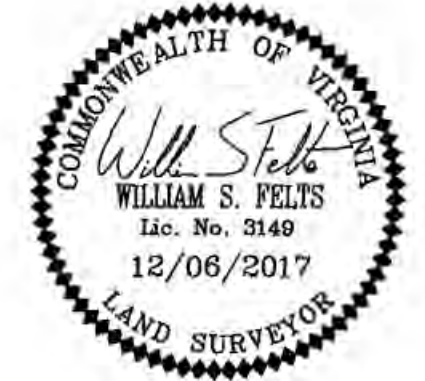


3925 Midlands Road Williamsburg, VA 23188
Ph: (757) 565-1677 Fax: (757) 565-0782
web: landtechresources.com

I HEREBY CERTIFY THAT THIS PLAT IS ACCURATE AND THAT IT COMPLIES WITH THE CODE OF VIRGINIA OF 1950, AS AMENDED, §55-79.58, AND I FURTHER CERTIFY THAT ALL IMPROVEMENTS OR PORTIONS THEREOF DEPICTED HEREON, PURSUANT TO THE CODE OF VIRGINIA, §55-79.58(A), ARE SUBSTANTIALLY COMPLETE.

William S. Felts
WILLIAM S. FELTS LIC. #3149

12/06/2017
DATE



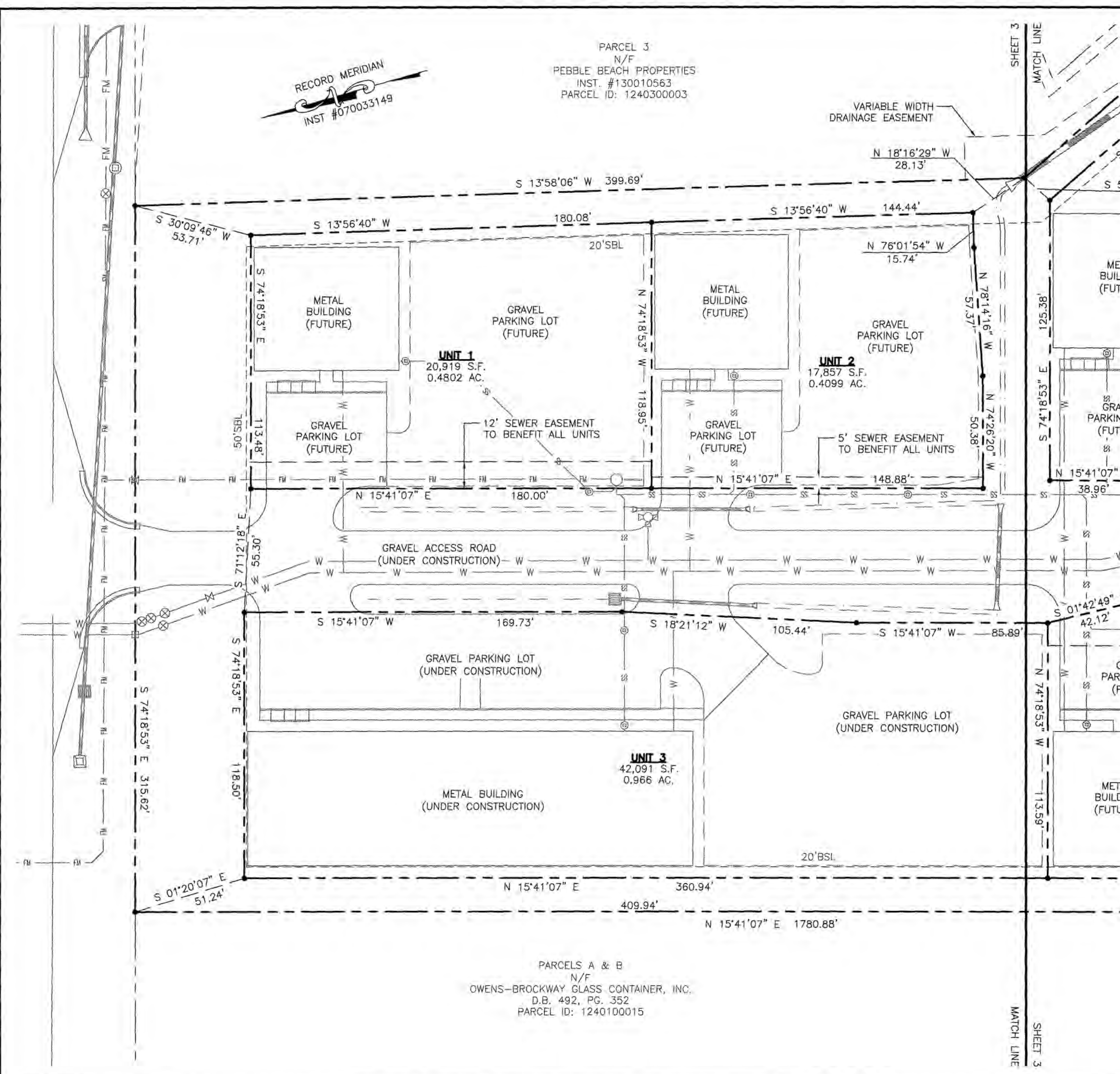
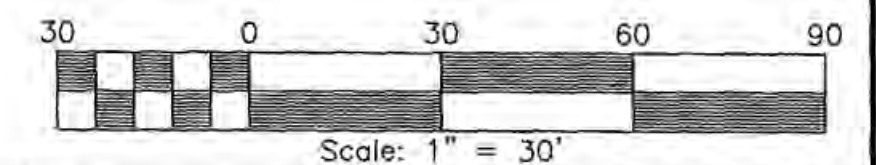
JCC Subdivision Agent *E66*
Approval Not Required

5 Large/Small Plat(s) Recorded
herewith as # 180001858

City of Williamsburg & County of James City
Circuit Court: This PLAT was recorded on
Jan 23 2018

at 12:49 AM/PM, PB PG
Document # 180001858
MONA A. FOLEY, CLERK
Mona A. Foley, Clerk

PARCELS A & B
N/F
OWENS-BROCKWAY GLASS CONTAINER, INC.
D.B. 492, PG. 352
PARCEL ID: 1240100015



180001858

PLAT OF
JACOB'S INDUSTRIAL CENTER PARCEL 1
A CONDOMINIUM
 BEING LOCATED IN THE STONEHOUSE DISTRICT
 OF JAMES CITY COUNTY, VIRGINIA

DATE: 12-06-2017 SHEET: 3 OF 5 JOB #14-102



3925 Midlands Road Williamsburg, VA 23188
 Ph: (757) 565-1677 Fax: (757) 565-0782
 web: landtechresources.com

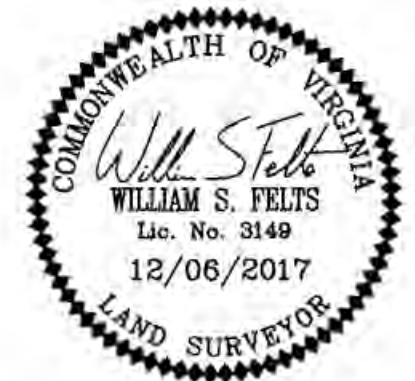
I HEREBY CERTIFY THAT THIS PLAT IS ACCURATE AND THAT IT COMPLIES WITH THE CODE OF VIRGINIA OF 1950, AS AMENDED, §§55-79.58, AND I FURTHER CERTIFY THAT ALL IMPROVEMENTS OR PORTIONS THEREOF DEPICTED HEREON, PURSUANT TO THE CODE OF VIRGINIA, §§55-79.58(A), ARE SUBSTANTIALLY COMPLETE.

William S. Felts
 WILLIAM S. FELTS LIC. #3149

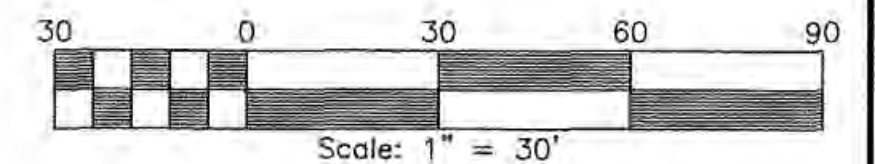
12/06/2017
 DATE

5 Large/Small Plat(s) Recorded
 herewith as # 180001858

City of Williamsburg & County of James City
 Circuit Court: This PLAT was recorded on
Jan 23 2018
 at 12:49 AM/PM, PB PG
 Document # 180001858
 MONA A. FOLEY, CLERK

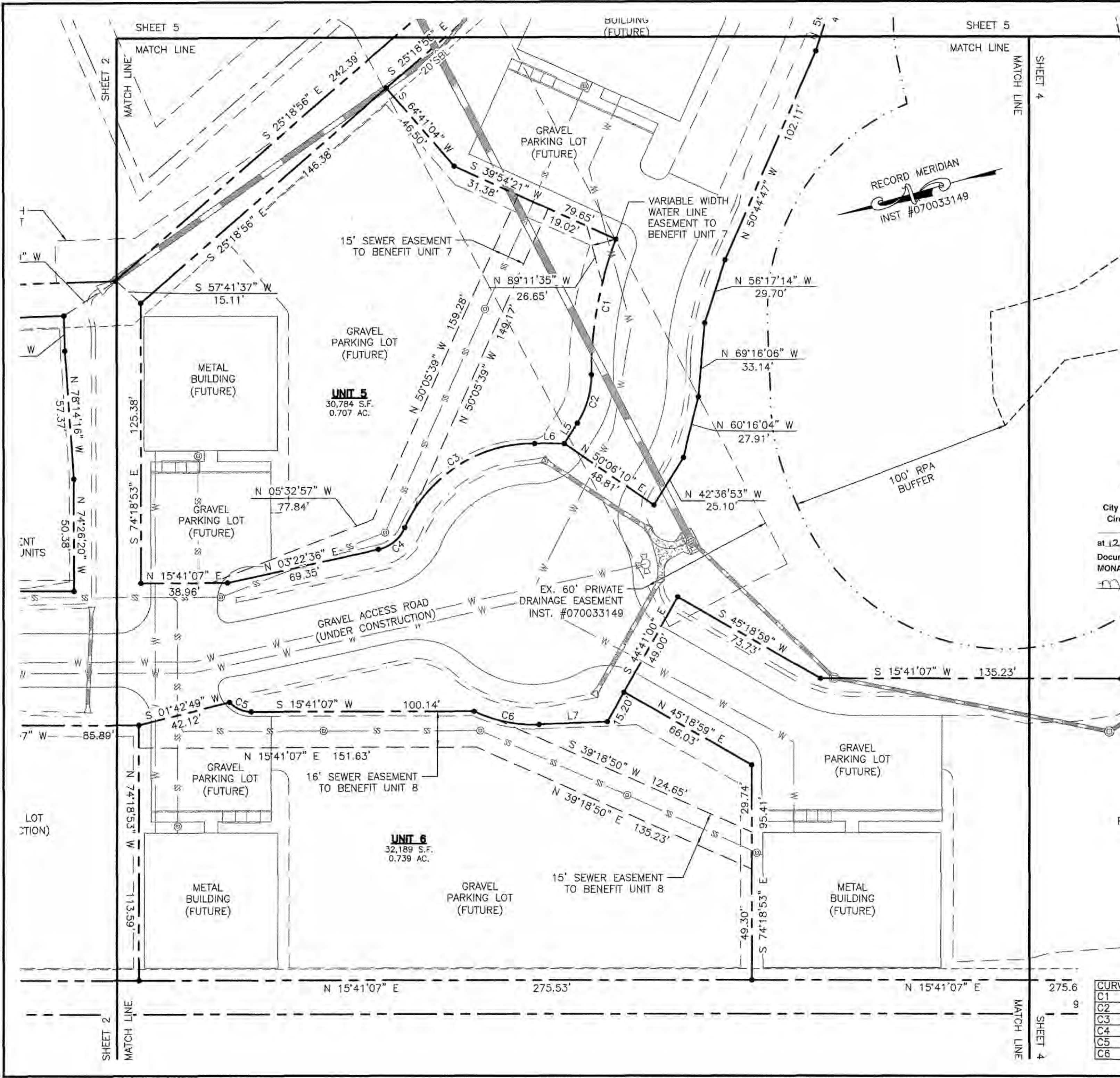


JCC Subdivision Agent E66
 Approval Not Required



LINE	BEARING	DISTANCE
L1	S 53°54'49" E	40.52'
L2	S 20°26'20" E	116.04'
L3	S 63°50'38" W	61.48'
L4	S 59°36'49" W	111.17'
L5	N 41°44'24" W	10.88'
L6	N 16°21'04" E	13.31'
L7	S 13°23'28" W	30.76'

CURVE	ARC LENGTH	RADIUS	DELTA ANGLE	CHORD BEARING	CHORD LENGTH
C1	62.14'	172.00'	20°42'01"	N 63°59'36" W	61.80'
C2	22.76'	40.00'	32°36'12"	S 58°02'30" E	22.46'
C3	73.66'	63.00'	66°59'40"	N 17°08'47" W	69.54'
C4	16.03'	17.00'	54°01'13"	S 23°38'00" E	15.44'
C5	10.84'	13.00'	47°45'52"	S 39°34'03" W	10.53'
C6	30.11'	63.00'	27°22'56"	S 27°04'56" W	29.82'



180001858

RECORD MERIDIAN
INST #070033149

PLAT OF
JACOB'S INDUSTRIAL CENTER PARCEL 1
A CONDOMINIUM
BEING LOCATED IN THE STONEHOUSE DISTRICT
OF JAMES CITY COUNTY, VIRGINIA

DATE: 12-06-2017 SHEET: 4 OF 5 JOB #14-102



3925 Midlands Road Williamsburg, VA 23188
Ph: (757) 565-1677 Fax: (757) 565-0782
web: landtechresources.com

I HEREBY CERTIFY THAT THIS PLAT IS ACCURATE AND THAT IT
COMPLIES WITH THE CODE OF VIRGINIA OF 1950, AS AMENDED,
§55-79.58, AND I FURTHER CERTIFY THAT ALL IMPROVEMENTS OR
PORTIONS THEREOF DEPICTED HEREON, PURSUANT TO THE CODE OF
VIRGINIA, §55-79.58(A), ARE SUBSTANTIALLY COMPLETE.

William S. Felts

WILLIAM S. FELTS LIC. #3149

12/06/2017
DATE



JCC Subdivision Agent *Ebc*
Approval Not Required

5 Large/Small Plat(s) Recorded
herewith as # 180001858

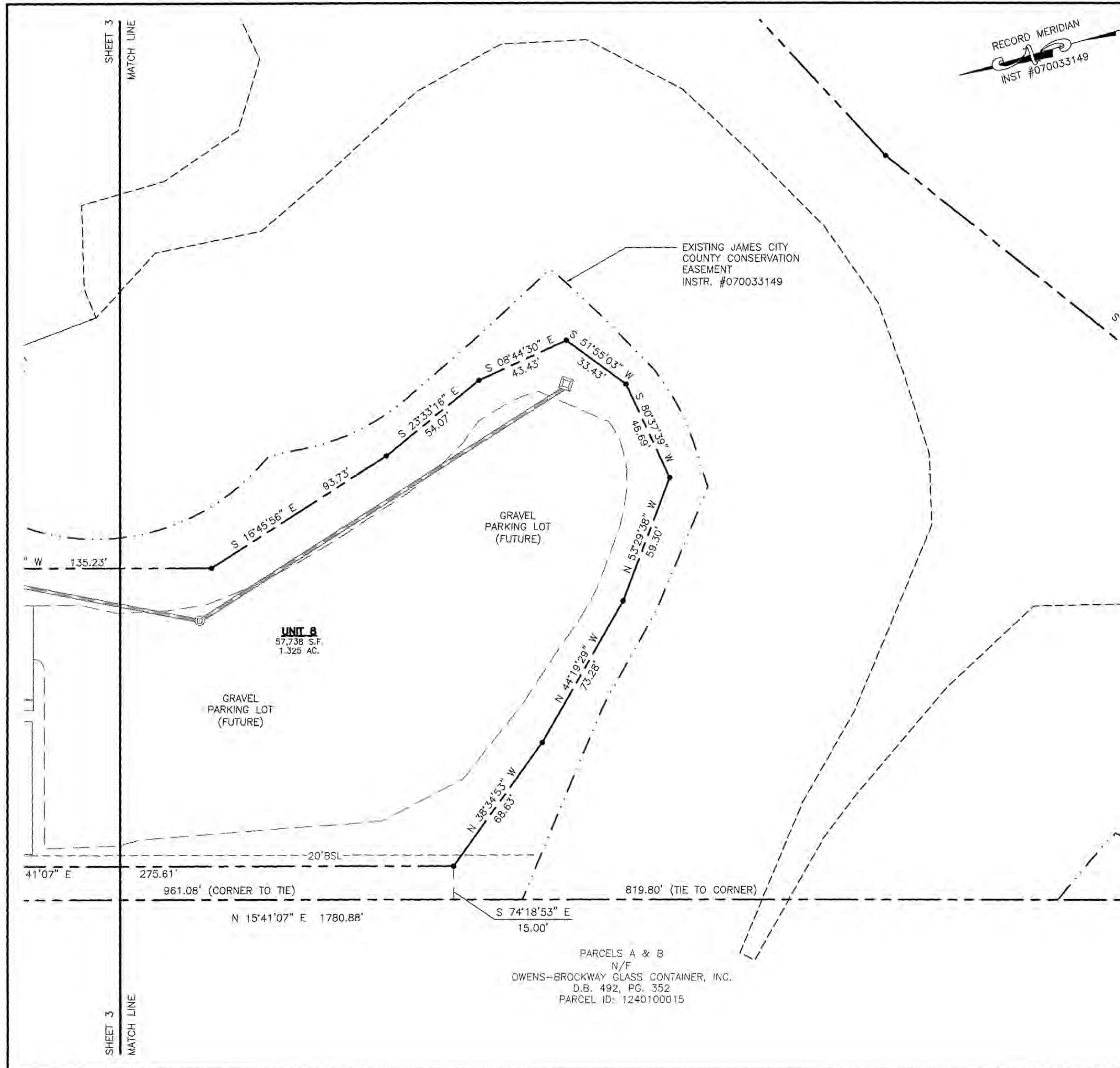
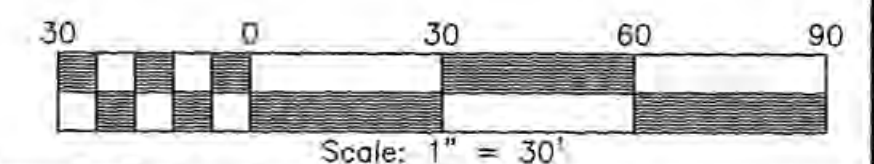
City of Williamsburg & County of James City
Circuit Court: This PLAT was recorded on
Jan 23 2018

at 12:49 AM/PM, PG PG

Document # 180001858

MONA A. FOLEY, CLERK

Mona A. Foley, Clerk



EXISTING JAMES CITY
COUNTY CONSERVATION
EASEMENT
INSTR. #070033149

GRAVEL
PARKING LOT
(FUTURE)

UNIT 8
57,738 S.F.
1.325 AC.

GRAVEL
PARKING LOT
(FUTURE)

PARCELS A & B
N/F
OWENS-BROCKWAY GLASS CONTAINER, INC.
D.B. 492, PG. 352
PARCEL ID: 1240100015

SHEET 3
MATCH LINE

SHEET 3
MATCH LINE

180001858

PLAT OF
JACOB'S INDUSTRIAL CENTER PARCEL 1
A CONDOMINIUM
BEING LOCATED IN THE STONEHOUSE DISTRICT
OF JAMES CITY COUNTY, VIRGINIA

DATE: 12-06-2017 SHEET: 5 OF 5 JOB #14-102



3925 Midlands Road Williamsburg, VA 23188
Ph: (757) 565-1677 Fax: (757) 565-0782
web: landtechresources.com

I HEREBY CERTIFY THAT THIS PLAT IS ACCURATE AND THAT IT
COMPLIES WITH THE CODE OF VIRGINIA OF 1950, AS AMENDED,
§55-79.58, AND I FURTHER CERTIFY THAT ALL IMPROVEMENTS OR
PORTIONS THEREOF DEPICTED HEREON, PURSUANT TO THE CODE OF
VIRGINIA, §55-79.58(A), ARE SUBSTANTIALLY COMPLETE.

William S. Felts
WILLIAM S. FELTS LIC. #3149

12/06/2017
DATE



JCC Subdivision Agent *EGG*
Approval Not Required

5 Large/Small Plat(s) Recorded
herewith as # 180001858

City of Williamsburg & County of James City
Circuit Court: This PLAT was recorded on
Jan 23 2018
at 12:49 AM/PM, PB PG
Document # 180001858
MONA A. FOLEY, CLERK
Mona A. Foley Clerk

