

180001858

RECORD MERIDIAN  
INST #070033149

PLAT OF  
JACOB'S INDUSTRIAL CENTER PARCEL 1  
A CONDOMINIUM  
BEING LOCATED IN THE STONEHOUSE DISTRICT  
OF JAMES CITY COUNTY, VIRGINIA

DATE: 12-06-2017 SHEET: 4 OF 5 JOB #14-102



3925 Midlands Road Williamsburg, VA 23188  
Ph: (757) 565-1677 Fax: (757) 565-0782  
web: landtechresources.com

I HEREBY CERTIFY THAT THIS PLAT IS ACCURATE AND THAT IT  
COMPLIES WITH THE CODE OF VIRGINIA OF 1950, AS AMENDED,  
§55-79.58, AND I FURTHER CERTIFY THAT ALL IMPROVEMENTS OR  
PORTIONS THEREOF DEPICTED HEREON, PURSUANT TO THE CODE OF  
VIRGINIA, §55-79.58(A), ARE SUBSTANTIALLY COMPLETE.

*William S. Felts*

WILLIAM S. FELTS LIC. #3149

12/06/2017  
DATE



JCC Subdivision Agent *Ebc*  
Approval Not Required

5 Large/Small Plat(s) Recorded  
herewith as # 180001858

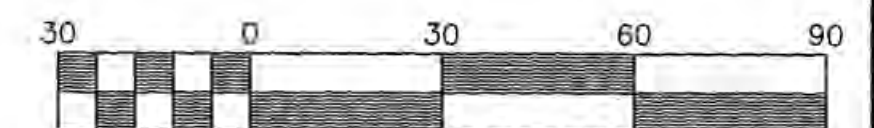
City of Williamsburg & County of James City  
Circuit Court: This PLAT was recorded on  
Jan 23 2018

at 12:49 AM/PM, PG PG

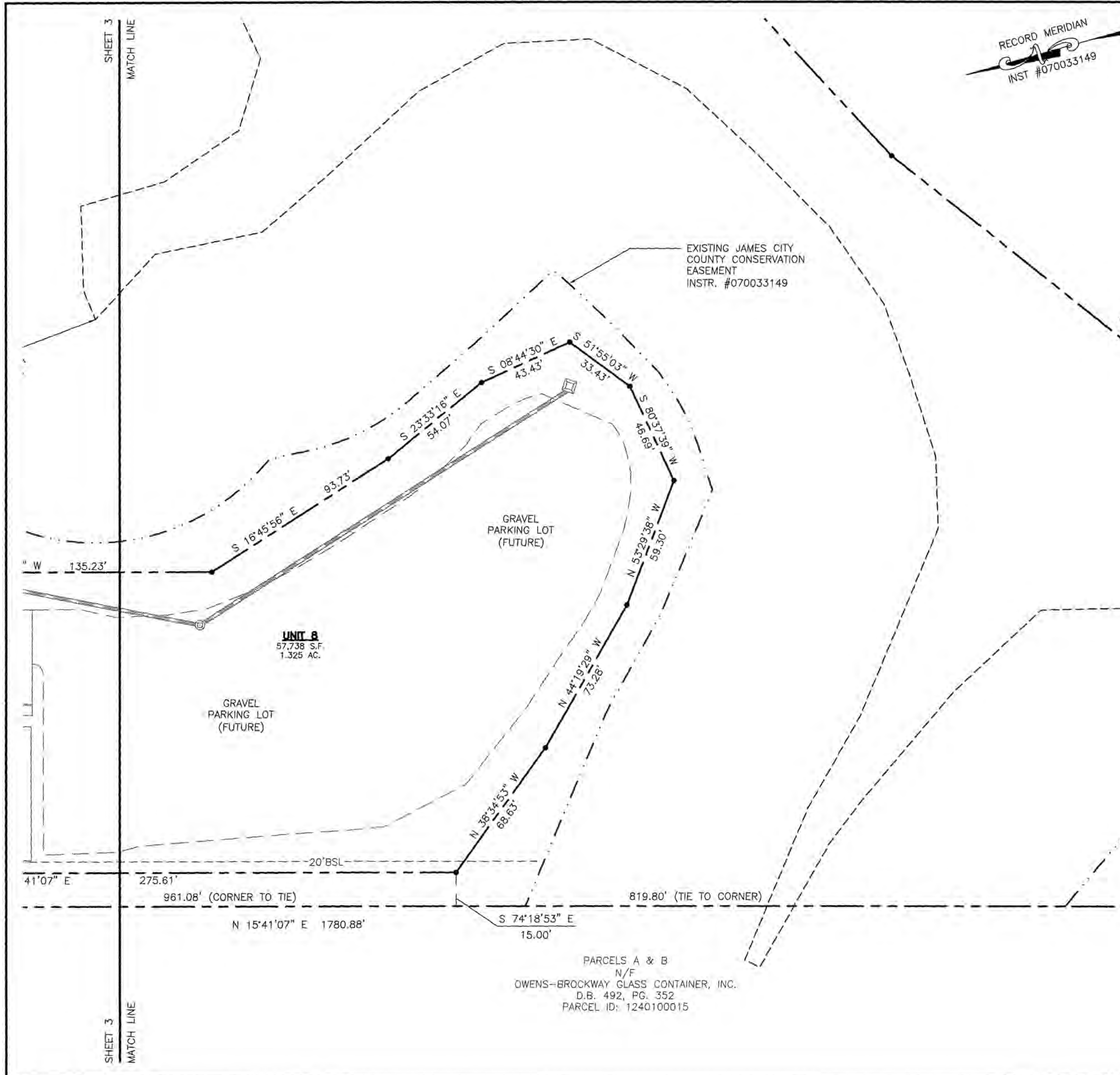
Document # 180001858

MONA A. FOLEY, CLERK

*Monica Foley*, Clerk



Scale: 1" = 30'



UNIT B  
57,738 S.F.  
1.325 AC.

GRAVEL  
PARKING LOT  
(FUTURE)

GRAVEL  
PARKING LOT  
(FUTURE)

EXISTING JAMES CITY  
COUNTY CONSERVATION  
EASEMENT  
INSTR. #070033149

PARCELS A & B  
N/F  
OWENS-BROCKWAY GLASS CONTAINER, INC.  
D.B. 492, PG. 352  
PARCEL ID: 1240100015

SHEET 3  
MATCH LINE

SHEET 3  
MATCH LINE