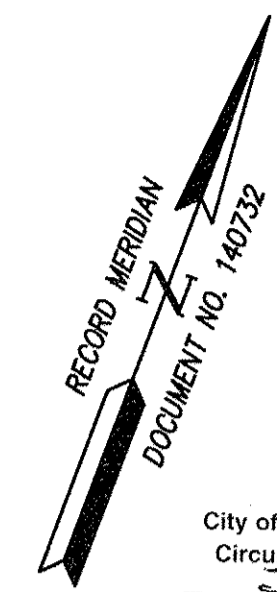


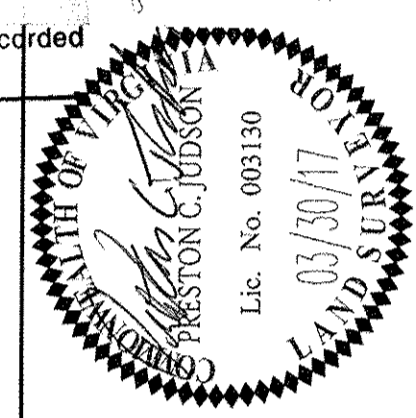
Project	173159
Client	MONA A. FOLEY, CLERK
City	City of Williamsburg
County	County of James City
Recorded	July 14, 2017
Time	3:23 AM
Page	1 of 1
Document #	173159
Author	Monica Foley
Reviewer	
Checker	
Approver	
Date	
Scale	
Sheet	
Revised	
Comments	



City of Williamsburg & County of James City
 Circuit Court: This PLAT was recorded on
 July 14, 2017
 at 3:23 AM (PM) PG 1
 Document # 173159
 MONA A. FOLEY, CLERK
 Monica Foley, Clerk

3 Large Small Plat(s) Recorded
 herewith as # 173159

NOTE:
 THIS PLAT REFERS TO
 LOTS 33-76, 122 AND 123

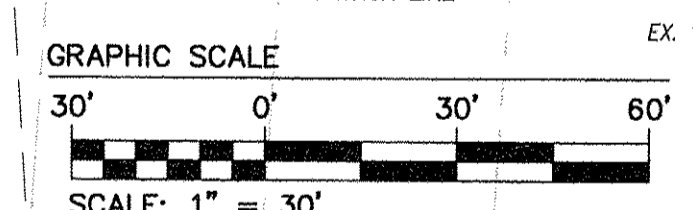
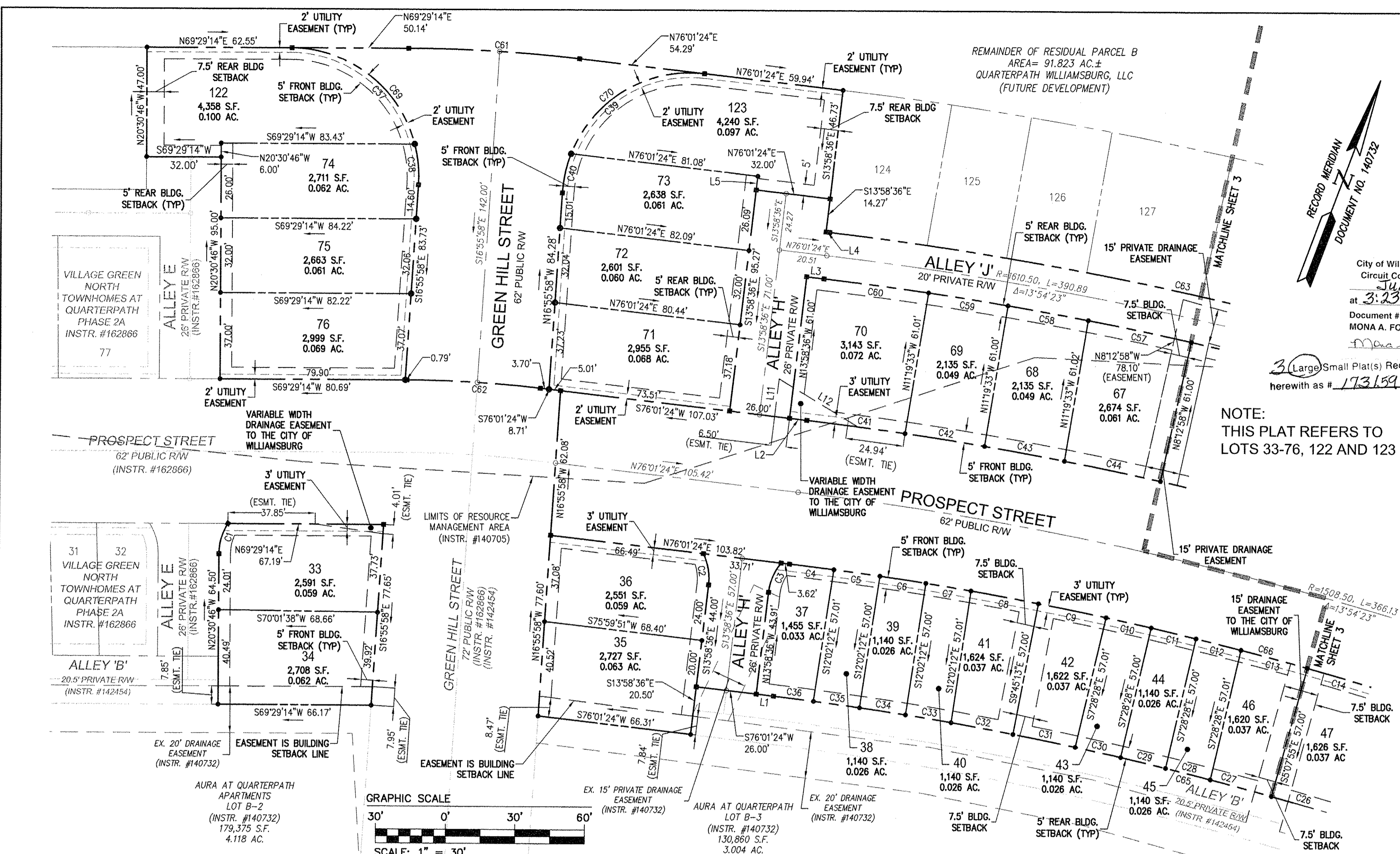


5248 Old Towne Road, Suite 1
 Williamsburg, Virginia 23188
 Phone: (757) 253-0040
 Fax: (757) 220-9894
 www.aesva.com

CONSULTING ENGINEERS
 Hampton Roads | Central Virginia | Middle Peninsula

PLAT OF SUBDIVISION
VILLAGE GREEN NORTH
 TOWNHOMES AT QUARTERPATH
 PHASE 2B
 BEING THE PROPERTY OF
 QUARTERPATH WILLIAMSBURG, LLC
 CITY OF WILLIAMSBURG VIRGINIA

Project Contacts: PC/JJFS
 Project Number: W10219-01 (2B)
 Scale: 1"=30' Date: 3/30/17
 Sheet Number
2 OF 3



CURVE TABLE						
CURVE #	DELTA	RADIUS	LENGTH	TANGENT	CHORD	CHORD BEARING
C1	32°47'50"	24.00'	13.74'	7.06'	13.55'	N4°06'51"W
C2	32°47'50"	24.00'	13.74'	7.06'	13.55'	S30°22'31"E
C3	33°03'40"	24.00'	13.85'	7.12'	13.66'	N2°33'14"E
C4	0°44'50"	1477.50'	19.27'	9.64'	19.27'	N76°23'49"E
C5	0°46'32"	1477.50'	20.00'	10.00'	20.00'	N77°09'30"E
C6	0°46'32"	1477.50'	20.00'	10.00'	20.00'	N77°56'02"E
C7	0°46'32"	1477.50'	20.00'	10.00'	20.00'	N78°42'35"E
C8	1°08'56"	1477.50'	29.63'	14.82'	29.63'	N79°40'19"E
C9	1°08'50"	1477.50'	29.59'	14.79'	29.59'	N80°49'12"E
C10	0°46'32"	1477.50'	20.00'	10.00'	20.00'	N81°46'54"E
C11	0°46'32"	1477.50'	20.00'	10.00'	20.00'	N82°33'26"E
C12	0°46'32"	1477.50'	20.00'	10.00'	20.00'	N83°19'58"E
C13	1°08'51"	1477.50'	29.59'	14.79'	29.59'	N84°17'40"E

CURVE TABLE						
CURVE #	DELTA	RADIUS	LENGTH	TANGENT	CHORD	CHORD BEARING
C14	1°09'29"	1477.50'	29.87'	14.93'	29.86'	N85°26'50"E
C15	0°46'33"	1477.50'	20.00'	10.00'	20.00'	N86°24'50"E
C16	0°46'32"	1477.50'	20.00'	10.00'	20.00'	N87°11'23"E
C17	0°46'32"	1477.50'	20.00'	10.00'	20.00'	N87°57'55"E
C18	0°46'33"	1477.50'	20.00'	10.00'	20.00'	N88°44'27"E
C19	0°48'03"	1477.50'	20.65'	10.33'	20.65'	N89°31'45"E
C20	6°07'17"	536.00'	57.27'	28.66'	57.24'	S51°17'49"E
C21	0°44'15"	1420.50'	18.28'	9.14'	18.28'	S89°33'39"W
C22	0°48'25"	1420.50'	20.00'	10.00'	20.00'	S88°47'20"W
C23	0°48'24"	1420.50'	20.00'	10.00'	20.00'	S87°58'55"W
C24	0°48'24"	1420.50'	20.00'	10.00'	20.00'	S87°10'31"W
C25	0°48'25"	1420.50'	20.00'	10.00'	20.00'	S86°22'06"W
C26	1°05'49"	1420.50'	27.20'	13.60'	27.20'	S85°24'59"W

CURVE TABLE						
CURVE #	DELTA	RADIUS	LENGTH	TANGENT	CHORD	CHORD BEARING
C27	1°05'58"	1420.50'	27.26'	13.63'	27.26'	S84°19'06"W
C28	0°48'24"	1420.50'	20.00'	10.00'	20.00'	S83°21'55"W
C29	0°48'24"	1420.50'	20.00'	10.00'	20.00'	S82°33'30"W
C30	0°48'24"	1420.50'	20.00'	10.00'	20.00'	S81°45'06"W
C31	1°06'07"	1420.50'	27.32'	13.66'	27.32'	S80°47'50"W
C32	1°06'12"	1420.50'	27.36'	13.68'	27.36'	S79°41'41"W
C33	0°48'24"	1420.50'	20.00'	10.00'	20.00'	S78°44'22"W
C34	0°48'24"	1420.50'	20.00'	10.00'	20.00'	S77°55'58"W
C35	0°48'24"	1420.50'	20.00'	10.00'	20.00'	S77°07'34"W
C36	0°41'58"	1420.50'	17.34'	8.67'	17.34'	S76°22'23"W
C37	74°55'43"	55.00'	71.93'	42.15'	66.91'	S72°43'21"E
C38	18°19'35"	55.00'	17.59'	8.87'	17.52'	S26°05'43"E
C39	75°03'38"	55.00'	72.05'	42.25'	67.01'	N38°29'35"E

LINE TABLE		
LINE	BEARING	LENGTH
L1	S76°01'24"W	7.51'
L2	S76°01'24"W	7.51'
L3	N76°01'24"E	7.51'
L4	N76°01'24"E	1.51'
L5	S13°58'36"E	5.91'
L6	N89°55'47"E	10.00'
L7	N89°55'47"E	8.96'
L8	N89°55'47"E	8.96'
L9	S89°55'47"W	12.81'
L10	N89°55'47"E	12.81'
L11	N13°58'36"W	16.23'
L12	S79°35'55"E	39.71'