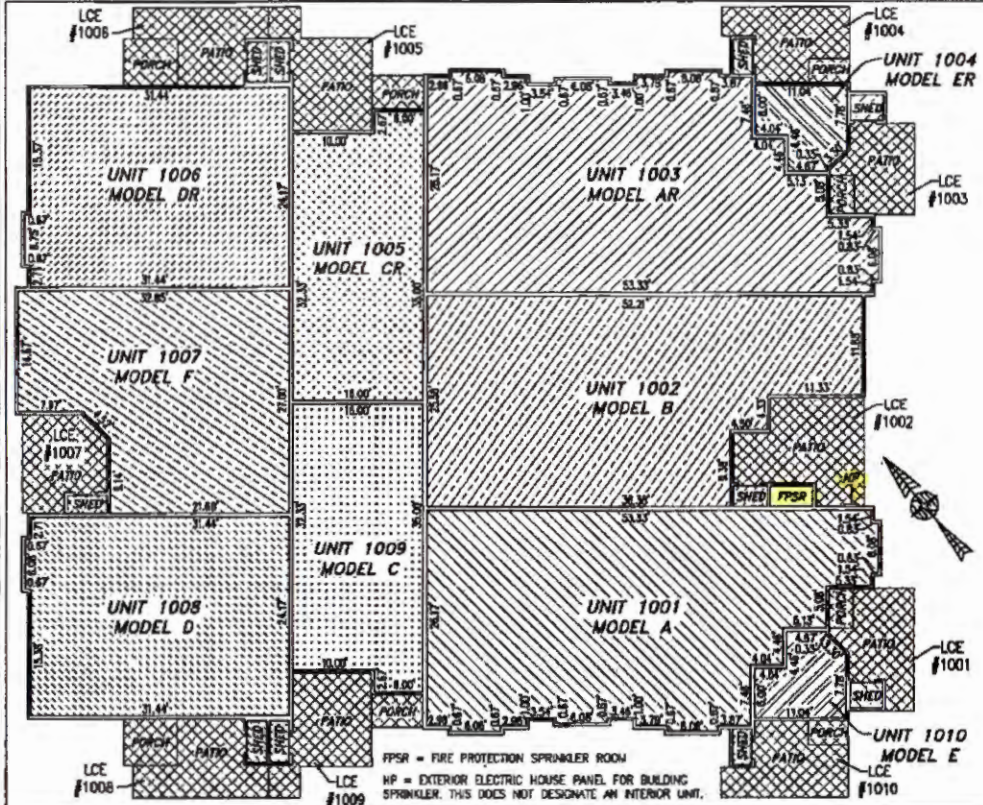
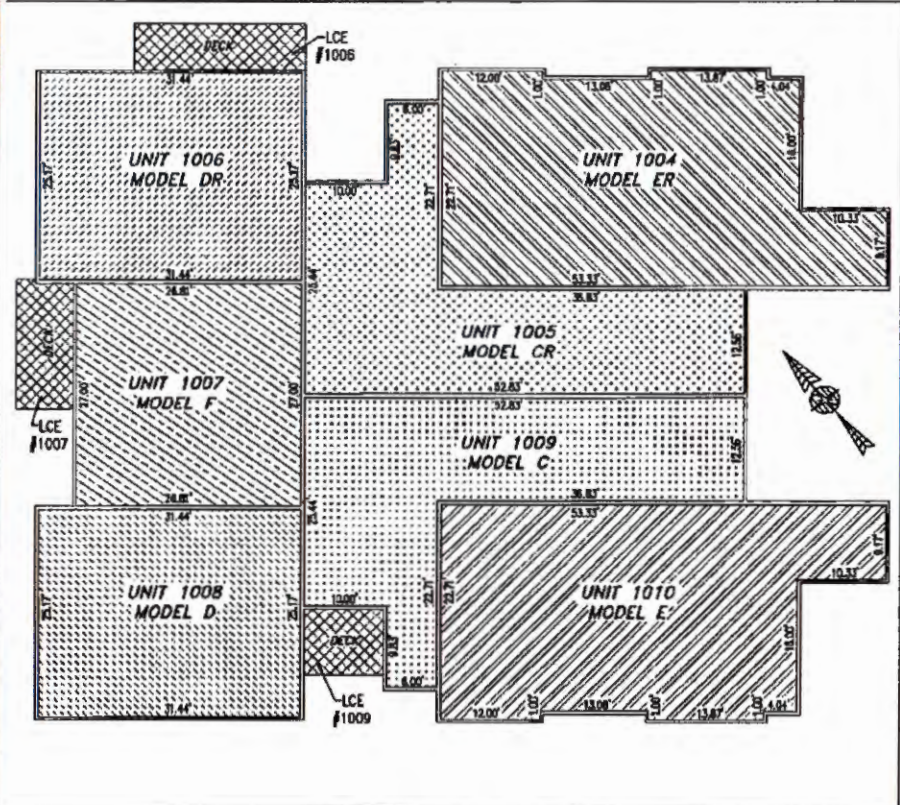


BUILDING 10 (10-PLEX)



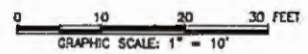
FIRST FLOOR



SECOND FLOOR

UNIT ID	UNIT DESCRIPTION	UNIT ADDRESS	PARKING SPACE
A	-INDICATES AREA OF UNIT 1001	#1001 KING'S LAND CT.	181
B	-INDICATES AREA OF UNIT 1002	#1002 KING'S LAND CT.	182
AR	-INDICATES AREA OF UNIT 1003	#1003 KING'S LAND CT.	183
ER	-INDICATES AREA OF UNIT 1004	#1004 KING'S LAND CT.	188
CR	-INDICATES AREA OF UNIT 1005	#1005 KING'S LAND CT.	187
DR	-INDICATES AREA OF UNIT 1006	#1006 KING'S LAND CT.	171
F	-INDICATES AREA OF UNIT 1007	#1007 KING'S LAND CT.	174
D	-INDICATES AREA OF UNIT 1008	#1008 KING'S LAND CT.	172
C	-INDICATES AREA OF UNIT 1009	#1009 KING'S LAND CT.	173
E	-INDICATES AREA OF UNIT 1010	#1010 KING'S LAND CT.	175
HP	HOUSE PANEL (ELECTRIC)	#1011 KING'S LAND CT.	N/A
FPSR	FIRE PROTECTION SPRINKLER ROOM	#1012 KING'S LAND CT.	N/A
	-INDICATES COMMON ELEMENT (EXCLUDING AREAS OUTSIDE OF SUBMITTED LAND)		
	-INDICATES LIMITED COMMON ELEMENT (LCE) ASSIGNED TO A UNIT. # UNIT ASSIGNED		

I HEREBY CERTIFY THAT THIS PLAN IS ACCURATE AND THAT IT COMPLIES WITH THE PROVISIONS OF THE CODE OF VIRGINIA OF 1950 AS AMENDED, § 55-79.58 AND I FURTHER CERTIFY THAT ALL UNITS THEREOF DEPICTED HEREDIN, PURSUANT TO THE CODE OF VIRGINIA; § 55-79.58B, ARE SUBSTANTIALLY COMPLETE.



THIS SHEET: FLOOR PLANS

PHASE 10
CONDOMINIUM PLAT AND PLAN
 OF
THE PROMENADE
 AT
JOHN TYLER
 A CONDOMINIUM
 JAMES CITY COUNTY, VIRGINIA

Hayden Faye and Associates, Inc.
Land Surveyors
 333 S. GALLAWAY BLVD., SUITE 210
 VICTORVILLE, VA 22902
 951-757-4911/2208 9647973 491-2300

DATE: NOVEMBER 28, 2017
 SCALE: 1"=10'
 SHEET 5 OF 5 THIS PHASE

2/10/20

170023466-09