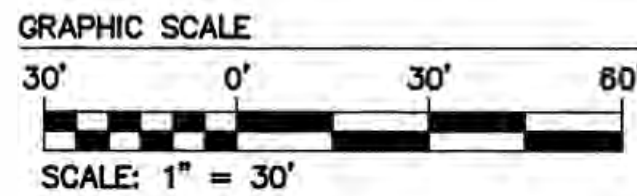


CURVE TABLE						
CURVE #	DELTA	RADIUS	LENGTH	TANGENT	CHORD	CHORD BEARING
C11	180°00'00"	28.50'	89.54'	INFINITY	57.00'	N90°00'00"W
C12	180°00'00"	28.50'	89.54'	INFINITY	57.00'	N90°00'00"E
C13	27°34'47"	157.50'	75.81'	38.66'	75.08'	N20°34'36"E
C14	27°51'28"	151.50'	73.66'	37.57'	72.94'	N20°26'16"E
C15	47°57'50"	114.50'	95.85'	50.94'	93.08'	N30°29'27"E
C16	50°13'52"	89.50'	78.46'	41.95'	75.98'	S31°37'28"W
C17	51°14'40"	17.50'	15.65'	8.39'	15.14'	S36°03'35"W
C18	32°13'10"	32.50'	18.28'	9.39'	18.04'	S45°34'19"W

LINE TABLE		
LINE	BEARING	LENGTH
L1	S75°15'01"E	6.02'
L2	N73°18'21"W	29.30'
L3	N46°19'41"W	28.47'
L4	S46°19'41"E	20.70'
L5	S73°18'21"E	35.74'

LINE TABLE		
LINE	BEARING	LENGTH
L6	S89°59'31"W	19.46'
L7	S31°27'58"W	26.00'
L8	S21°39'12"E	14.68'
L9	S10°26'15"W	17.42'
L10	N75°51'01"W	20.57'



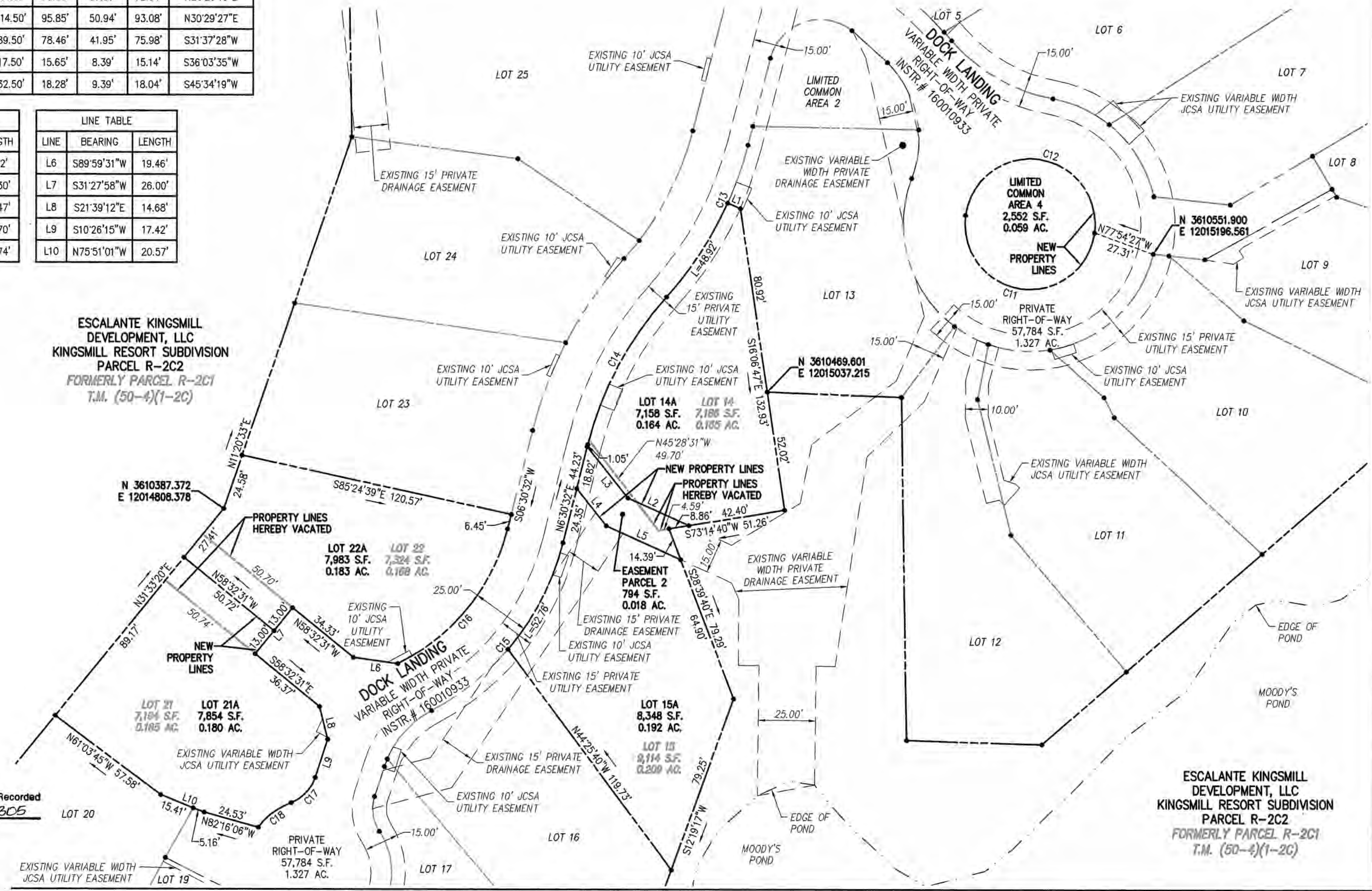
SEE SHEET 4 FOR GENERAL NOTES.

NOTE: JCSEA HAS INGRESS/EGRESS AND MAINTENANCE RIGHTS FOR ALL JCSEA UTILITIES LOCATED WITHIN THE RIGHT-OF-WAY.

NOTE: A 5' PERIMETER PRIVATE DRAINAGE EASEMENT SHALL BE DEDICATED ALONG PROPERTY LINES TO JCSEA FOR MAINTENANCE OF DRAINAGE SWALES.



ESCALANTE KINGSMILL DEVELOPMENT, LLC
KINGSMILL RESORT SUBDIVISION
PARCEL R-2C2
FORMERLY PARCEL R-2C1
T.M. (50-4)(1-2C)



6 Large/Small Plat(s) Recorded
herewith as # 170023305

City of Williamsburg & County of James City
Circuit Court: This PLAT was recorded on
Dec. 11, 2017
at 10:31 AM/PM, PB PG
Document # 170023305
MONA A. FOLEY, CLERK

Mona A. Foley, Clerk
James D. Mann

Rev.	Date	Description	Revised By



AES
CONSULTING ENGINEERS
816 Greenbrier Circle, Suite F
Chesapeake, Virginia 23320
Phone: (757) 410-7436
www.aesva.com
Hampton Roads | Central Virginia | Middle Peninsula

PLAT OF RESUBDIVISION
LOTS 14, 15, 21, 22, 30, AND 31
BURWELL'S BLUFF AT KINGSMILL ON THE JAMES
AND
PARCEL R-2C1, KINGSMILL RESORT SUBDIVISION
FOR
ESCALANTE KINGSMILL DEVELOPMENT, LLC
ROBERTS DISTRICT JAMES CITY COUNTY VIRGINIA

Project Contacts:	RDM
Project Number:	7753-39
Scale:	Date:
1" = 30'	6/30/2017
Sheet Number	
6 OF 6	