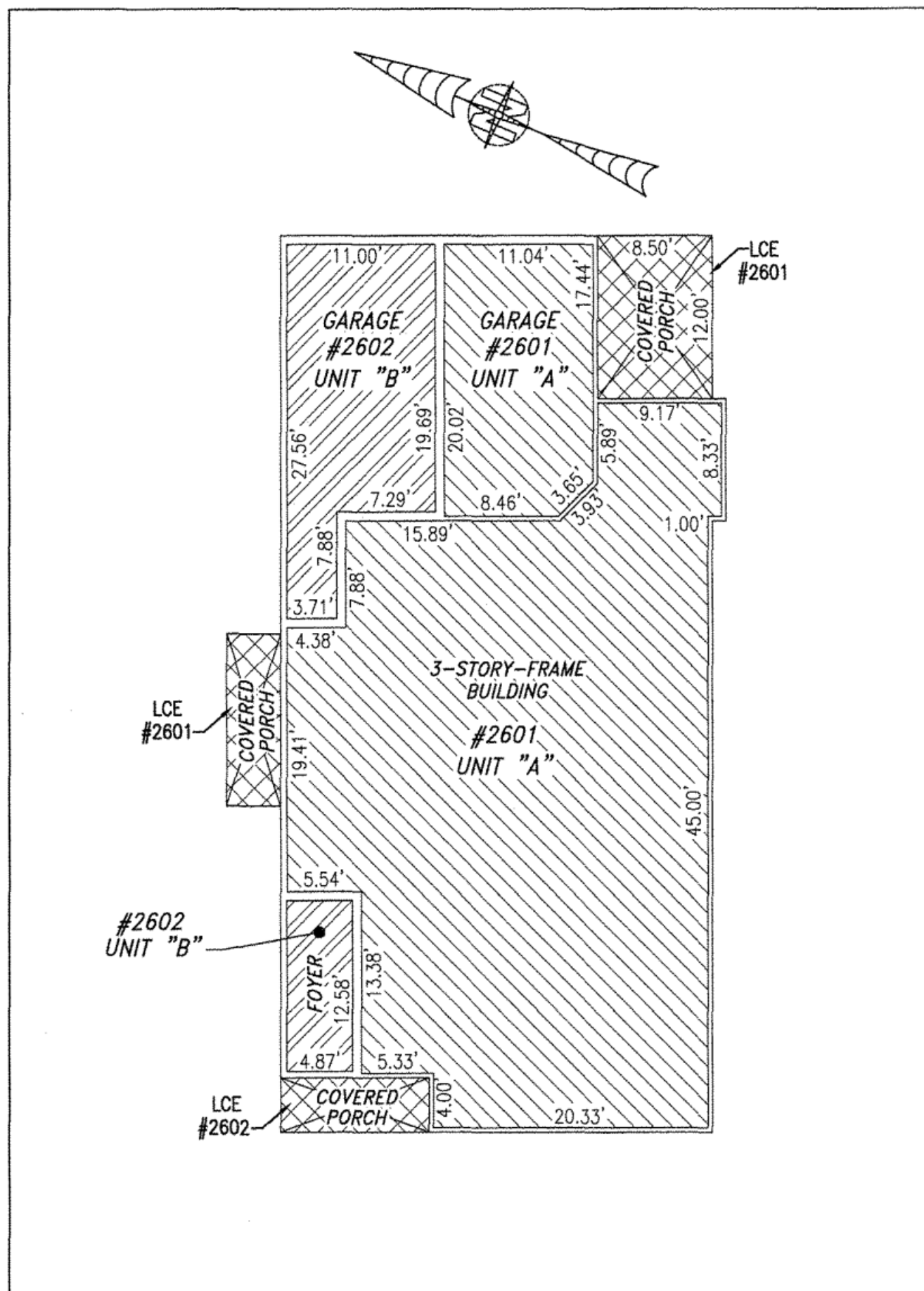
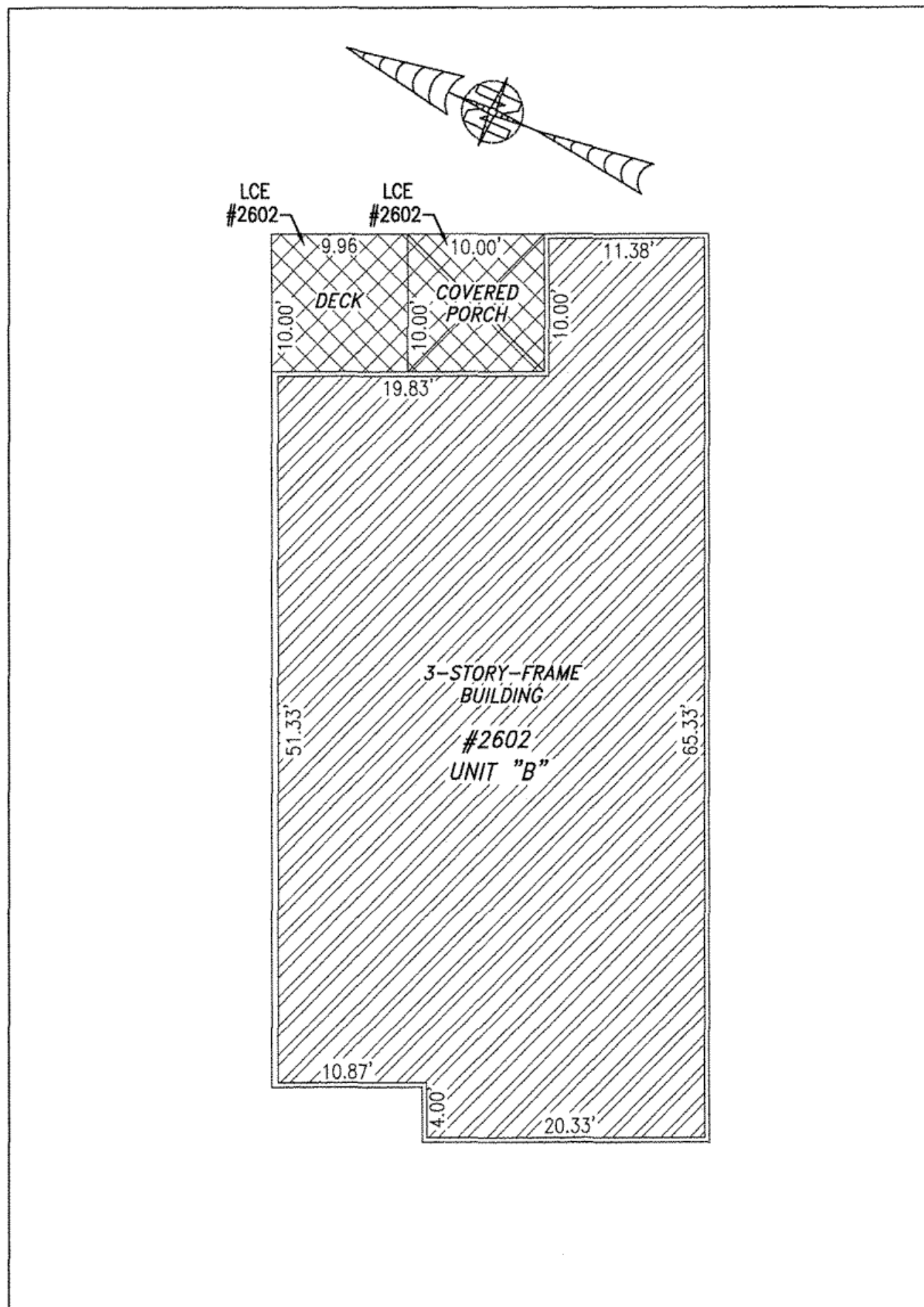


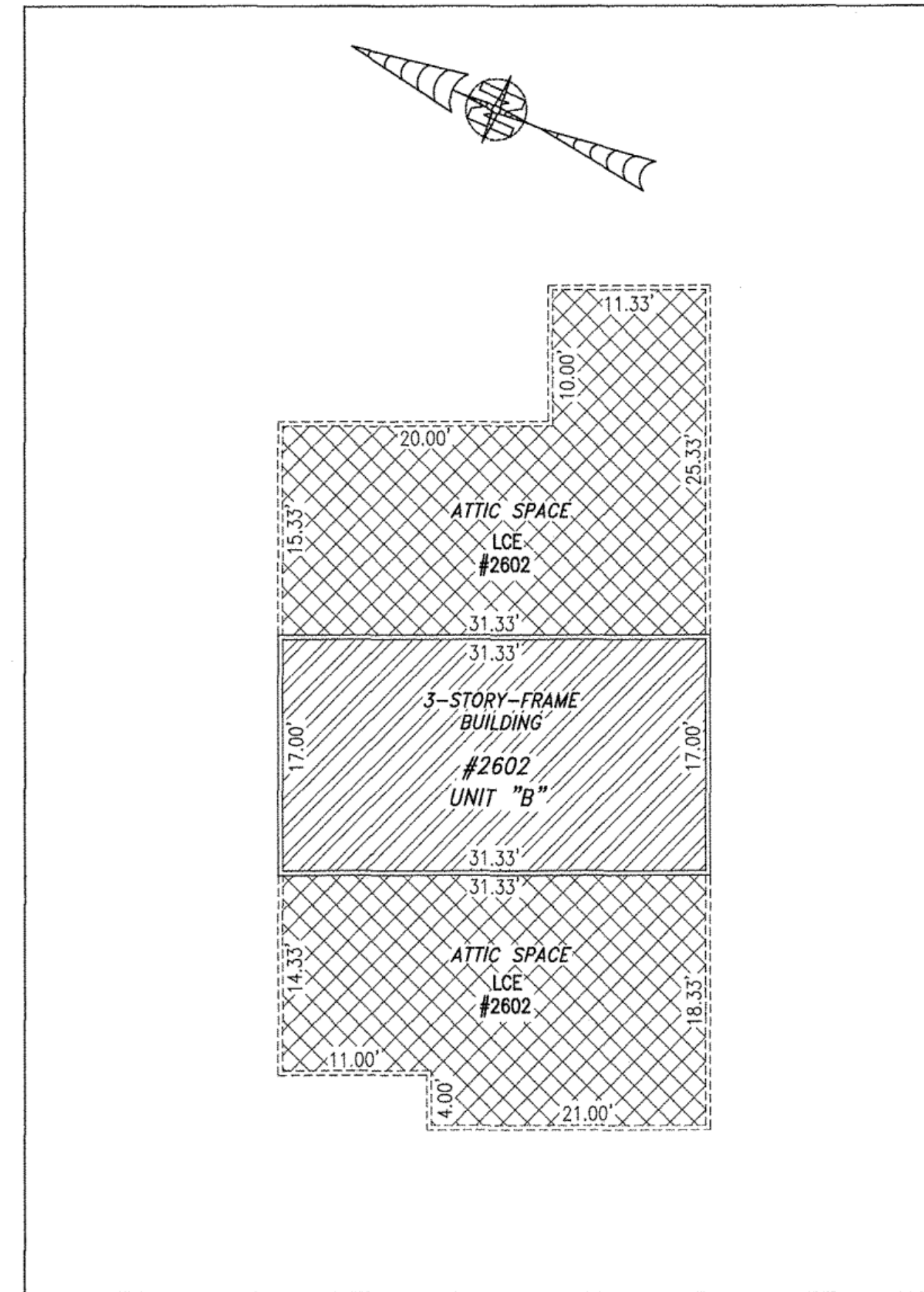
BUILDING 26 (DUPLEX)



FIRST FLOOR



SECOND FLOOR



THIRD FLOOR

I HEREBY CERTIFY THAT THIS PLAN IS ACCURATE AND THAT IT COMPLIES WITH THE PROVISIONS OF THE CODE OF VIRGINIA OF 1950 AS AMENDED, § 55-79.58 AND I FURTHER CERTIFY THAT ALL UNITS THEREOF DEPICTED HEREON, PURSUANT TO THE CODE OF VIRGINIA § 55-79.58B, ARE SUBSTANTIALLY COMPLETE.

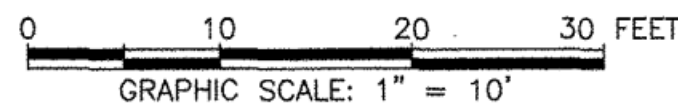
5 Large Plat(s) Recorded herewith as # 170021156

City of Williamsburg & County of James City
Circuit Court: This PLAT was recorded on
Nov. 7, 2017
at 3:16 AM/PM, PB PG
Document # 170021156
MONA A. FOLEY, CLERK

Monica Foley, Clerk
Hayden Frye, D.C.



UNIT ID	UNIT DESCRIPTION	UNIT ADDRESS
A	-INDICATES AREA OF UNIT 2601	#2601 QUEEN'S PATH
B	-INDICATES AREA OF UNIT 2602	#2602 QUEEN'S PATH
	-INDICATES COMMON ELEMENT	
	-INDICATES LIMITED COMMON ELEMENT	



JCC Subdivision Agent Approval Not Required

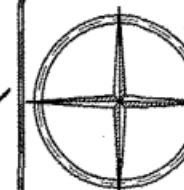
THIS SHEET: FLOOR PLANS

PHASE 26
CONDOMINIUM PLAT AND PLAN
OF
THE PROMENADE
AT
JOHN TYLER
A CONDOMINIUM
JAMES CITY COUNTY, VIRGINIA

Job# 160921

Hayden Frye and Associates, Inc.
Land Surveyors

333 KELLAM ROAD, SUITE 200
VIRGINIA BEACH, VA, 23462
PH: (757) 491-7228 FX: (757) 491-7229



DATE: OCTOBER 25, 2017

SCALE: 1"=10'

SHEET 5 OF 5 THIS PHASE