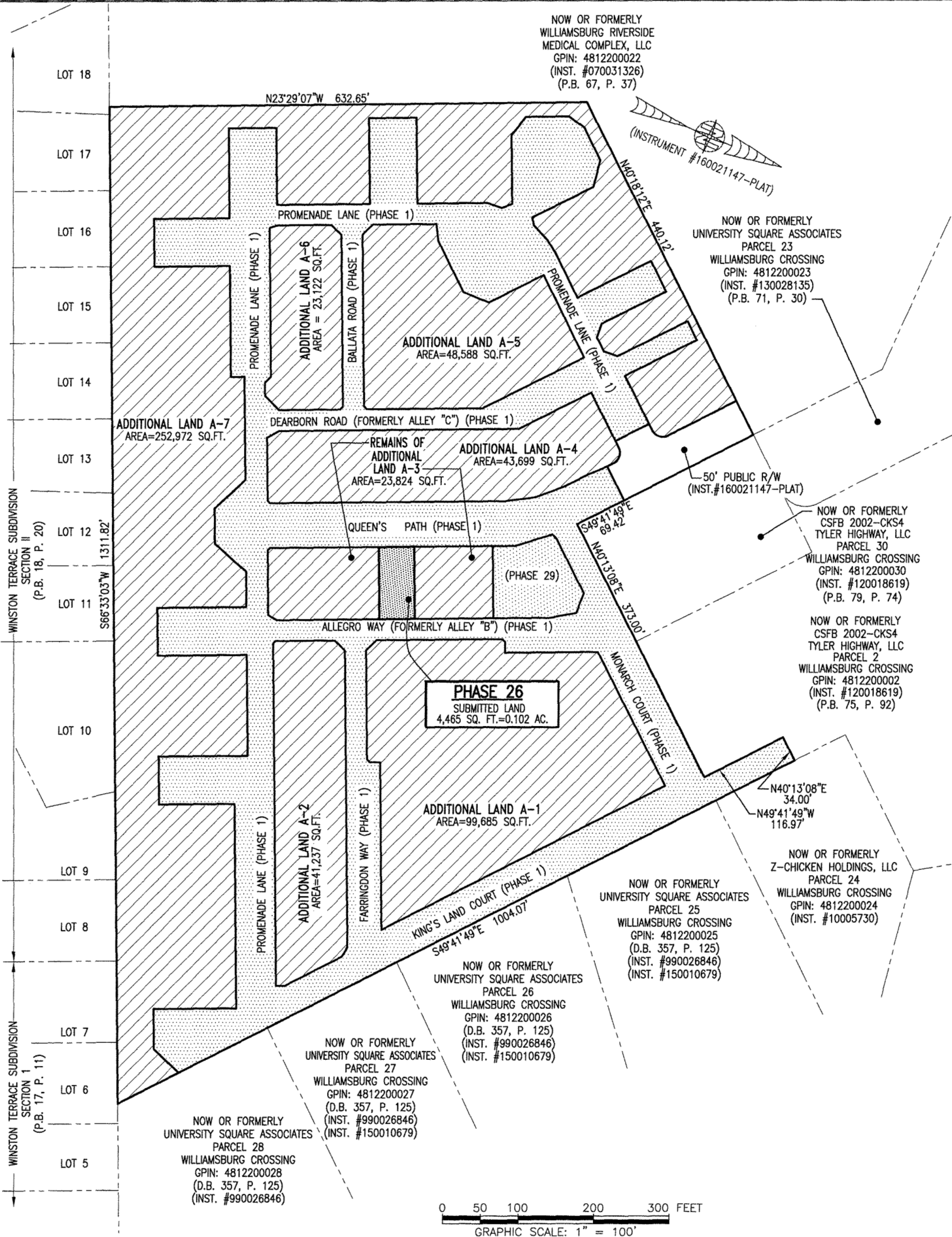
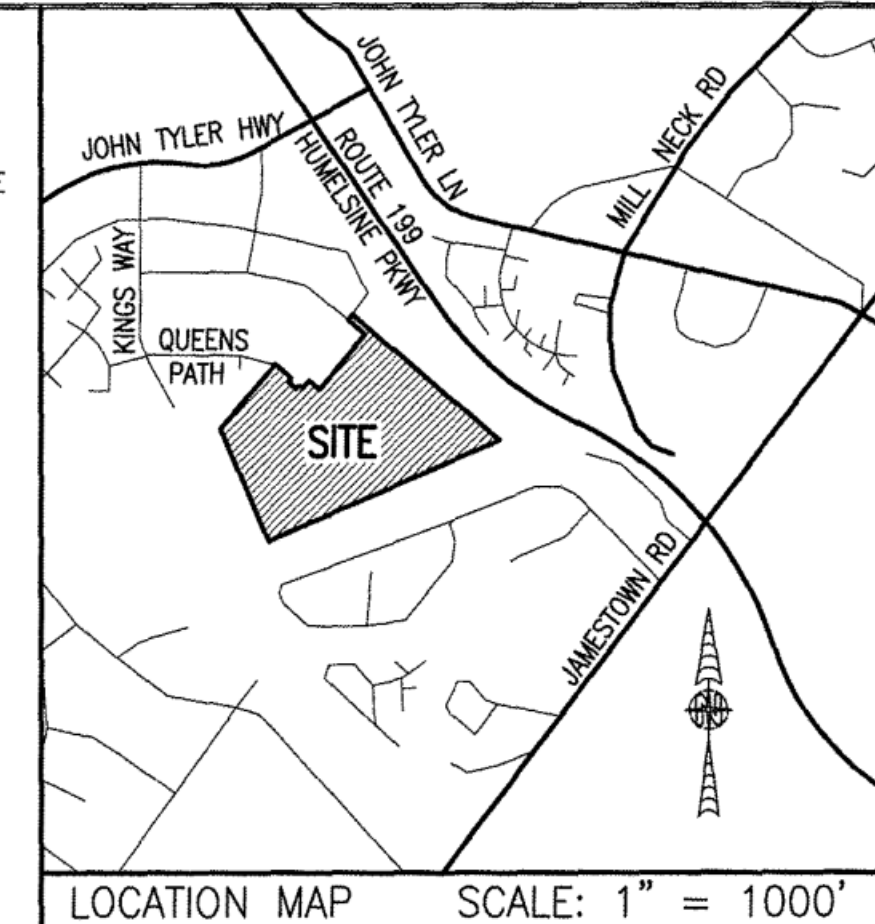


NOW OR FORMERLY  
WILLIAMSBURG RIVERSIDE  
MEDICAL COMPLEX, LLC  
GPIN: 4812200022  
(INST. #070031326)  
(P.B. 67, P. 37)

I HEREBY CERTIFY THAT THIS PLAT IS ACCURATE AND THAT IT COMPLIES WITH THE PROVISIONS OF THE CODE OF VIRGINIA OF 1950 AS AMENDED, § 55-79.58 AND I FURTHER CERTIFY THAT ALL IMPROVEMENTS THEREOF DEPICTED HEREON, PURSUANT TO THE CODE OF VIRGINIA § 55-79.58A, ARE NOT YET COMPLETED.



NOW OR FORMERLY  
UNIVERSITY SQUARE ASSOCIATES  
PARCEL 23  
WILLIAMSBURG CROSSING  
GPIN: 4812200023  
(INST. #130028135)  
(P.B. 71, P. 30)

NOW OR FORMERLY  
CSFB 2002-CKS4  
TYLER HIGHWAY, LLC  
PARCEL 30  
WILLIAMSBURG CROSSING  
GPIN: 4812200030  
(INST. #120018619)  
(P.B. 79, P. 74)

NOW OR FORMERLY  
CSFB 2002-CKS4  
TYLER HIGHWAY, LLC  
PARCEL 2  
WILLIAMSBURG CROSSING  
GPIN: 4812200002  
(INST. #120018619)  
(P.B. 75, P. 92)

NOW OR FORMERLY  
Z-CHICKEN HOLDINGS, LLC  
PARCEL 24  
WILLIAMSBURG CROSSING  
GPIN: 4812200024  
(INST. #10005730)

NOW OR FORMERLY  
UNIVERSITY SQUARE ASSOCIATES  
PARCEL 25  
WILLIAMSBURG CROSSING  
GPIN: 4812200025  
(D.B. 357, P. 125)  
(INST. #990026846)  
(INST. #150010679)

NOW OR FORMERLY  
UNIVERSITY SQUARE ASSOCIATES  
PARCEL 26  
WILLIAMSBURG CROSSING  
GPIN: 4812200026  
(D.B. 357, P. 125)  
(INST. #990026846)  
(INST. #150010679)

NOW OR FORMERLY  
UNIVERSITY SQUARE ASSOCIATES  
PARCEL 27  
WILLIAMSBURG CROSSING  
GPIN: 4812200027  
(D.B. 357, P. 125)  
(INST. #990026846)  
(INST. #150010679)

NOW OR FORMERLY  
UNIVERSITY SQUARE ASSOCIATES  
PARCEL 28  
WILLIAMSBURG CROSSING  
GPIN: 4812200028  
(D.B. 357, P. 125)  
(INST. #990026846)

AREA TABLE				
PHASE	BLDG#	STATUS/RECORDATION	SQUARE FEET	ACRES
1	N/A	INSTR.#170011679	268,468	6.163
26	26	SUBSTANTIALLY COMPLETE	4,465	0.102
29	29	NOT YET RECORDED	10,569	0.243
ADDITIONAL LAND A-1			99,685	2.289
ADDITIONAL LAND A-2			41,237	0.947
REMAINS OF ADDITIONAL LAND A-3			23,824	0.547
ADDITIONAL LAND A-4			43,699	1.003
ADDITIONAL LAND A-5			48,588	1.115
ADDITIONAL LAND A-6			23,122	0.531
ADDITIONAL LAND A-7			252,972	5.807
TOTAL: NEW PARCEL 29			816,629	18.747

LEGAL DESCRIPTION

PROPERTY SHOWN HEREON BEING "NEW PARCEL 29" CONTAINING 18.747 ACRES AS SHOWN ON "PLAT OF LOT LINE EXTINGUISHMENT BEING PARCELS 20 AND 29 OF WILLIAMSBURG CROSSING" PREPARED BY AES CONSULTING ENGINEERS, DATED 10-24-16 AND RECORDED AS INSTRUMENT NO. 160021147.

NOTES:

- PHASE 26 BUILDING 26 IS SUBSTANTIALLY COMPLETE.
- EASEMENTS AND BUILDING LINES SHOWN HEREON PER THE FOLLOWING:
  - ALTA SURVEY BY AES CONSULTING ENGINEERS, DATED 3-23-15
  - PLAT BY AES CONSULTING ENGINEERS, DATED 10-24-16, INST.#160021147
  - PLAN OF DEVELOPMENT BY AES CONSULTING ENGINEERS, DATED 9-8-16

SHEET INDEX:

- SHEET 1 OF 5: OVERALL SITE LAYOUT AND AREAS
- SHEET 2 OF 5: PROPERTY DATA, EASEMENTS, CURVE AND LINE TABLE
- SHEET 3 OF 5: BUILDING DETAIL
- SHEET 4 OF 5: FOUNDATION PLAN AND SECTION
- SHEET 5 OF 5: FLOOR PLANS

THIS SHEET: OVERALL SITE LAYOUT AND AREAS

5 Large/Small Plat(s) Recorded together as # 170021156

City of Williamsburg & County of James City  
Circuit Court: This PLAT was recorded on  
Nov. 7, 2017  
at 3:16 PM, PG  
Document # 170021156  
MONA A. FOLEY, CLERK  
Mona A. Foley, Clerk  
Justin Zubillaga, P.C.

- INDICATES SUBMITTED LAND
- INDICATES PREVIOUSLY SUBMITTED LAND
- INDICATES ADDITIONAL LAND

JCC Subdivision Agent  
Approval Not Required *EBC*

**PHASE 26**  
**CONDOMINIUM PLAT AND PLAN**  
 OF  
**THE PROMENADE**  
 AT  
**JOHN TYLER**  
 A CONDOMINIUM  
 JAMES CITY COUNTY, VIRGINIA

Jo# 160921  
 Hayden Frye and Associates, Inc.  
**Land Surveyors**  
 333 KELLAM ROAD, SUITE 200  
 VIRGINIA BEACH, VA, 23462  
 PH: (757) 491-7228 FX: (757) 491-7229

DATE: OCTOBER 25, 2017  
 SCALE: 1"=100'  
 SHEET 1 OF 5 THIS PHASE

