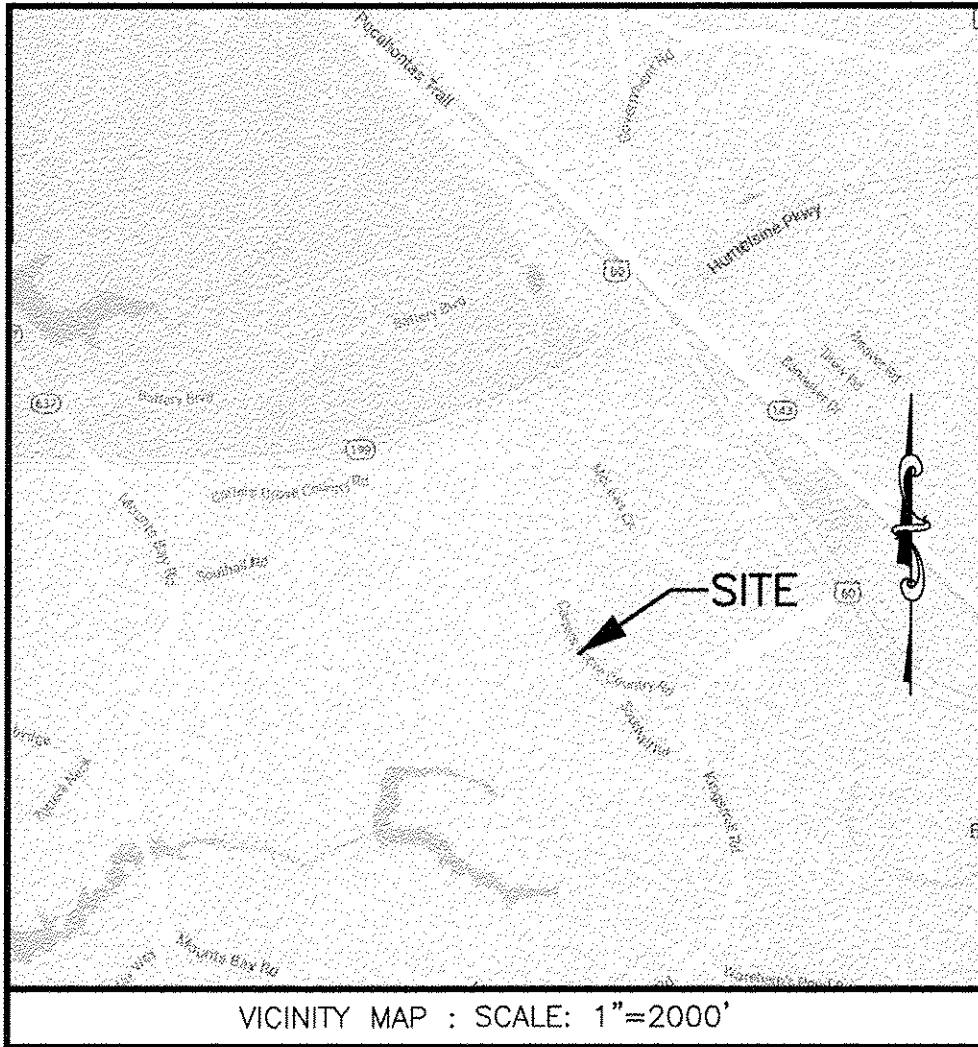


170020939

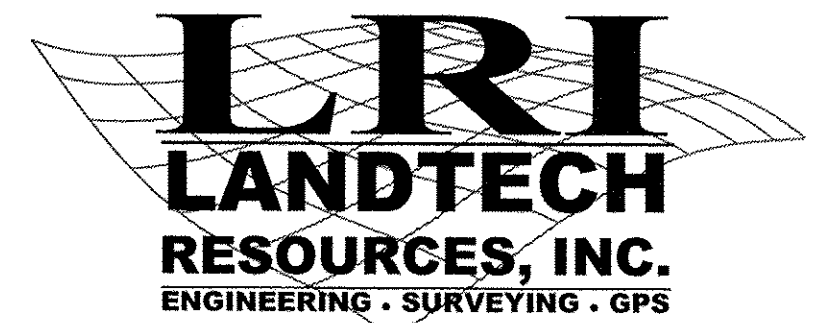


STORMWATER BASIN A
N/F
WILLIAMSBURG CORPORATE CENTER ASSOCIATION
INST. #000013027
PARCEL ID: 5020100089

N/F
JIM GRIFFITH BUILDING, INC.
D.B. 817, PG. 769
P.B. 68, PG. 48
PARCEL ID: 5020100059A

CONDOMINIUM PLAT OF
BUILDING #2
QUARTERLAND COMMONS PHASE IX
BEING LOCATED IN THE ROBERTS DISTRICT
OF JAMES CITY COUNTY, VIRGINIA

DATE: 09/28/2017 SHEET: 1 OF 2 JOB #17-505



3925 Midlands Road Williamsburg, VA 23188
Ph: (757) 565-1677 Fax: (757) 565-0782
web: landtechresources.com

PARCEL 58B
N/F
EJAD HOLDING CO., LLC
INST. #990012652
INST. #060018862
PARCEL ID: 5020100086

RECORD MERIDIAN
P.B. 80, PG. 93

GENERAL NOTES

1. THIS PLAT WAS PRODUCED WITHOUT A TITLE REPORT AND MAY NOT REFLECT ALL MATTERS AFFECTING PROPERTY.
2. THIS PROPERTY APPEARS TO FALL IN ZONE "X" AS SHOWN ON FLOOD INSURANCE RATE MAP 51095C0206D, DATED DECEMBER 16, 2015.
3. ALL UNITS ARE SERVED BY PUBLIC WATER AND SEWER.
4. ALL LAND AND IMPROVEMENTS OUTSIDE OF UNITS AND WITHIN PHASE LIMITS SHALL BE KNOWN AS COMMON ELEMENT EXCEPT FOR LIMITED COMMON ELEMENTS DESIGNATED ON PLAT AND BUILDING PLANS.
5. PROFFERED COVENANTS, RESTRICTIONS, AND CONDITIONS AFFECTING THIS PROPERTY HAVE BEEN RECORDED AS INST. #010004948.

SUBMITTED UNIT

LIMITED COMMON ELEMENT

PREVIOUSLY SUBMITTED UNIT

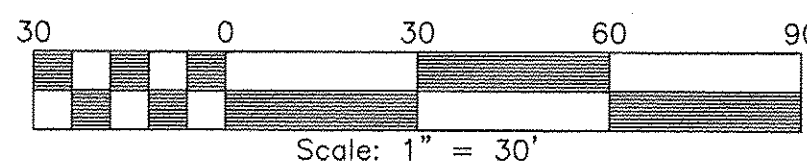
2 Large/~~Small~~ Plat(s) Recorded
herewith as # 170020939

N/F
RLP CAB, LLC
INST. #010013636
P.B. 61, PG. 67
PARCEL ID: 5020100059B

City of Williamsburg & County of James City
Circuit Court: This PLAT was recorded on
Nov. 2, 2017
at 3:34 PM, PB PG
Document # 170020939
MONA A. FOLEY, CLERK
Monica Foley, Clerk

LINE	BEARING	DISTANCE
L1	S 42°16'17" E	18.62'

CURVE	RADIUS	ARC LENGTH	CHORD LENGTH	CHORD BEARING	DELTA ANGLE
C1	344.74'	384.71'	365.06'	N 55°40'00" E	63°56'21"



S 16°06'27" W 274.89'

IRF

COMMON ELEMENT

COMMON ELEMENT

COMMON ELEMENT

PARCEL 58
QUARTERLAND COMMONS PHASE IX
N/F
QUARTERLAND COMMONS PHASE 9 UNIT OWNERS ASSOCIATION
INST. #010004948
P.B. 80, PG. 93
P.B. 77, PG. 75
PARCEL ID: 5020100087
AREA: 128,099 S.F. / 2.941 AC.
(EXISTING IMPROVEMENTS NOT SHOWN)

McLAWS CIRCLE
(60' PRIVATE R/W)
(P.B. 46, PG. 73)

COMMON ELEMENT

SURVEYORS CERTIFICATE

I HEREBY CERTIFY THAT THIS PLAN DEPICTS THE UNIT AND RELATED IMPROVEMENTS SHOWN AND THAT THEY COMPLY WITH THE CODE OF VIRGINIA OF 1950, AS AMENDED §55-79.58(B) AND ARE SUBSTANTIALLY COMPLETE.

I HEREBY CERTIFY THAT THIS PLAT IS ACCURATE AND THAT IT COMPLIES WITH THE CODE OF VIRGINIA OF 1950, AS AMENDED, §55-79.58, AND I FURTHER CERTIFY THAT ALL IMPROVEMENTS OR PORTIONS THEREOF DEPICTED HEREON, PURSUANT TO THE CODE OF VIRGINIA, §55-79.58(A), ARE SUBSTANTIALLY COMPLETE.



JCC Subdivision Agent *ECC*
Approval Not Required

William S. Felts
WILLIAM S. FELTS LIC. #3149

09/28/2017
DATE