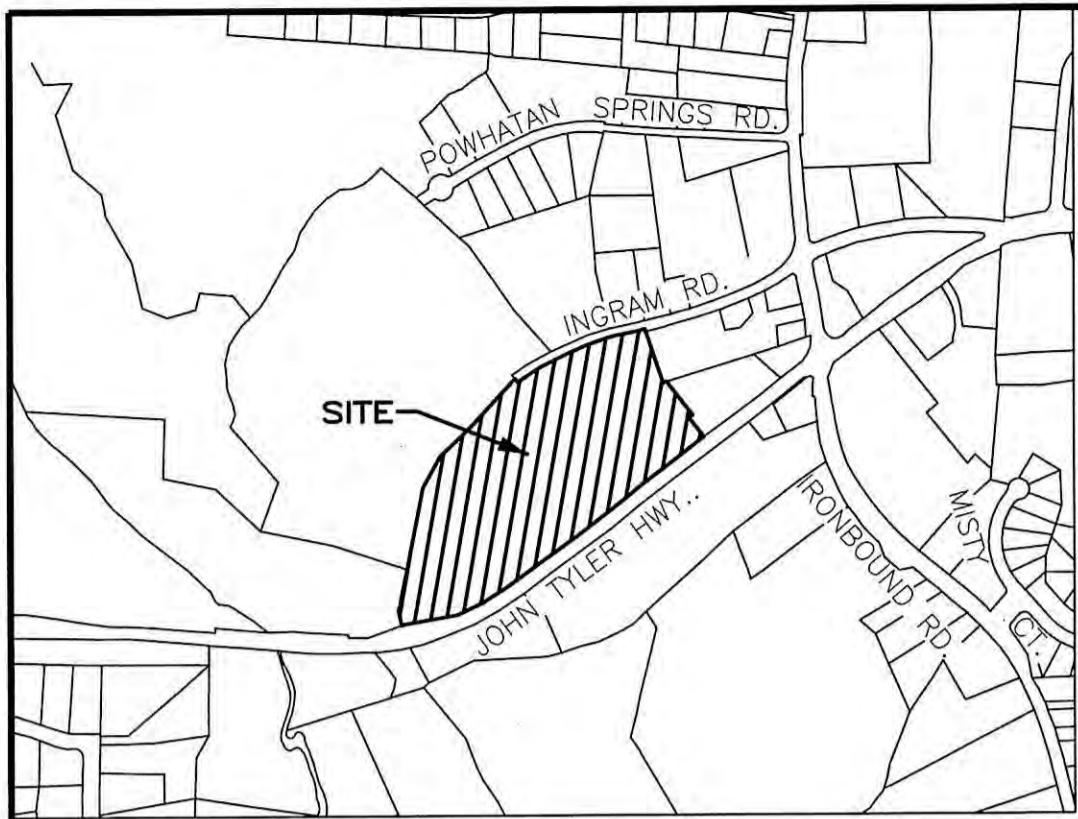
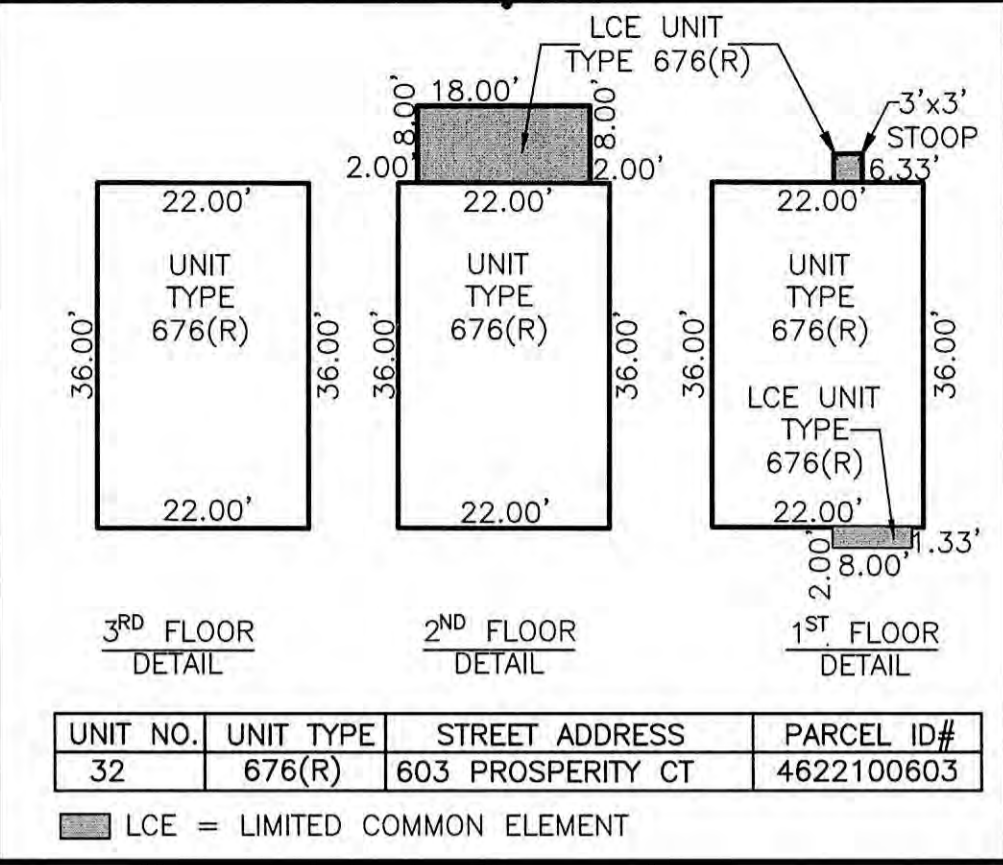
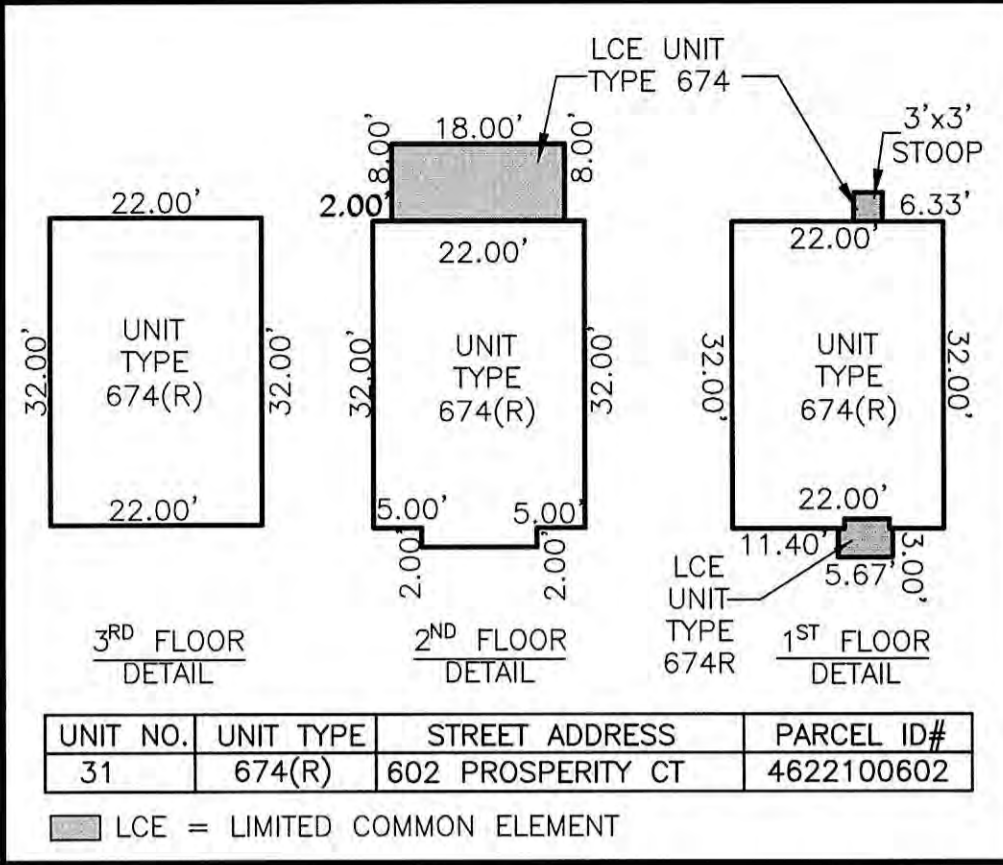
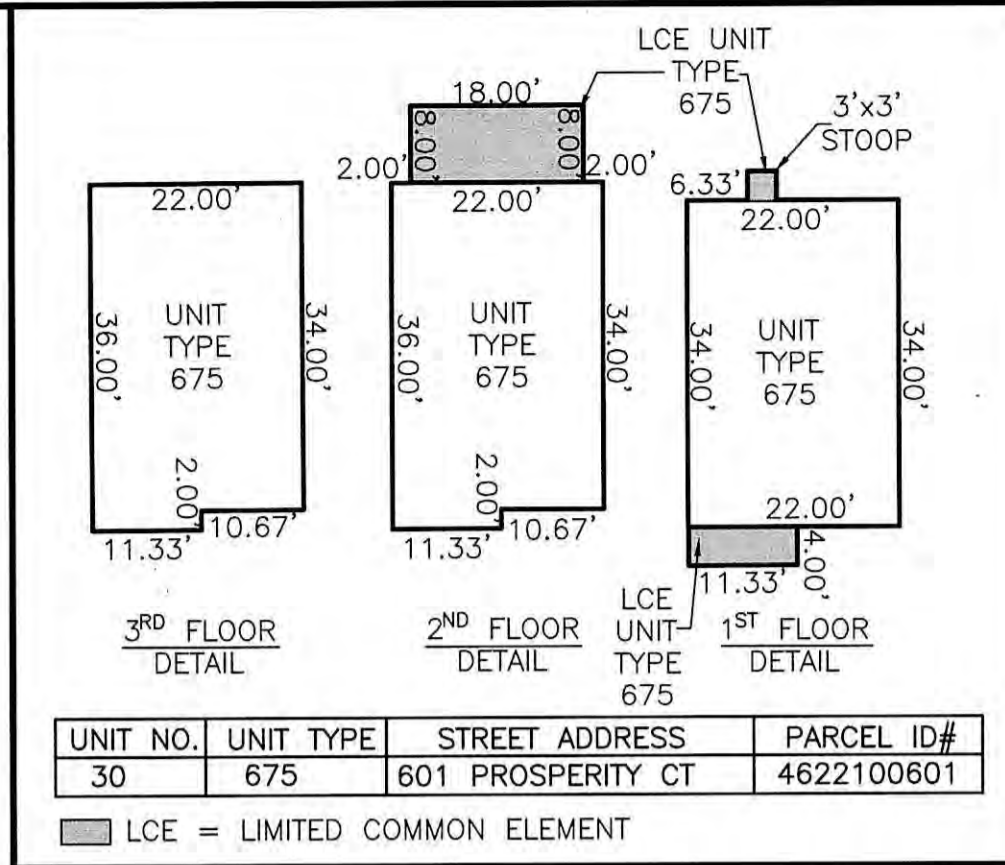


170016150



VICINITY MAP - NOT TO SCALE

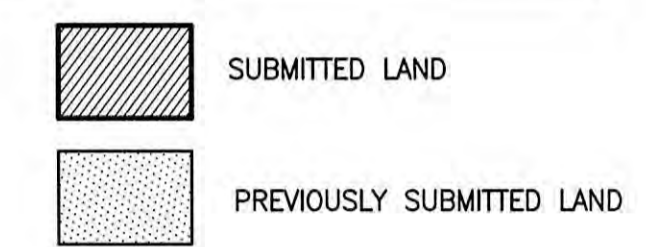
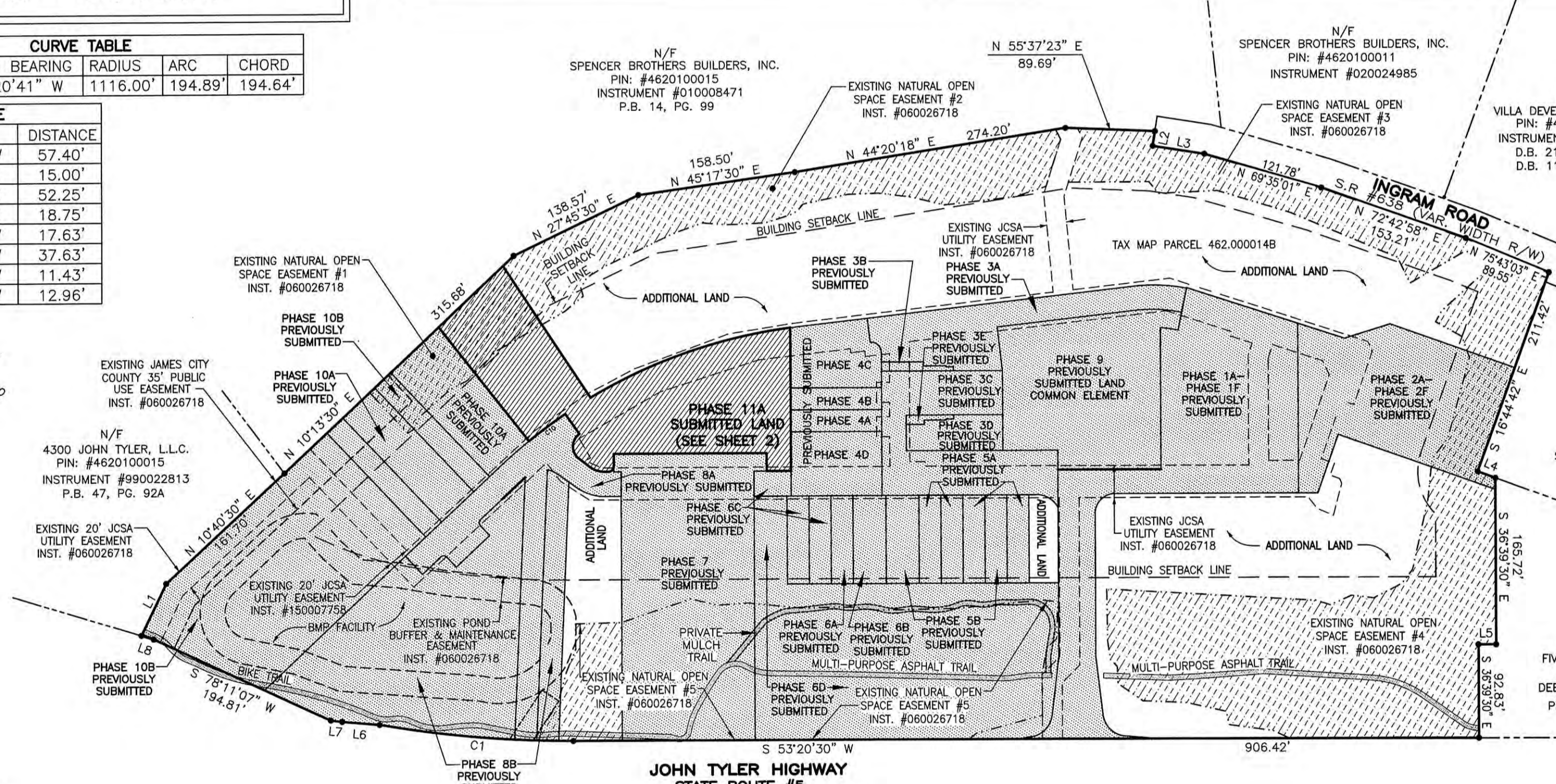


CURVE TABLE

NO.	DELTA	CHORD BEARING	RADIUS	ARC	CHORD
C1	10°00'21"	S 58°20'41" W	1116.00'	194.89'	194.64'

LINE TABLE

NO.	DIRECTION	DISTANCE
L1	N 10°44'30" W	57.40'
L2	S 27°48'08" E	15.00'
L3	N 62°11'52" E	52.25'
L4	N 73°15'18" E	18.75'
L5	S 53°20'30" W	17.63'
L6	S 58°14'37" W	37.63'
L7	S 60°24'36" W	11.43'
L8	S 70°12'23" W	12.96'



AREA TABLE

PARCEL	SQ. FT.	ACRES
PHASE 11A SUBMITTED LAND	33,854	0.777
PREVIOUSLY SUBMITTED LAND	353,949	8.126
ADDITIONAL LAND	265,433	6.093
TOTAL	653,236	14.996



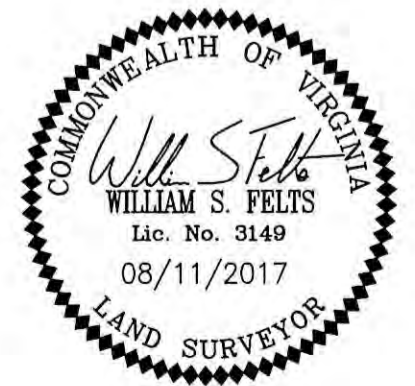
- GENERAL NOTES**
- THIS PLAT WAS PRODUCED WITHOUT A TITLE REPORT AND MAY NOT REFLECT ALL MATTERS AFFECTING PROPERTY.
 - THIS PROPERTY APPEARS TO FALL IN ZONE "X" AS SHOWN ON FLOOD INSURANCE RATE MAP 51095C0119D, DATED DECEMBER 16, 2015.
 - ALL UNITS TO BE SERVED BY PUBLIC WATER AND SEWER.
 - ALL LAND AND IMPROVEMENTS OUTSIDE OF BUILDINGS AND WITHIN PHASE LIMITS SHALL BE KNOWN AS COMMON ELEMENT EXCEPT FOR LIMITED COMMON ELEMENTS DESIGNATED ON PLAT AND BUILDING PLANS.
 - THIS PARCEL OF LAND WAS CONVEYED TO GOVERNOR'S GROVE AT FIVE FORKS, L.L.C. BY DEED RECORDED IN INSTRUMENT #070006512.
 - THE STREETS WITHIN THIS CONDOMINIUM SHALL BE KNOWN AS COMMON ELEMENT AND NOT A PUBLIC DEDICATED RIGHT-OF-WAY.
 - PHASE 11A IS SUBMITTED LAND. THE REMAINING PROPERTY HAS BEEN PREVIOUSLY SUBMITTED OR IS ADDITIONAL LAND. ALL ADDITIONAL LAND AND ALL COMMON ELEMENTS ARE WITHDRAWABLE LAND.
 - PROFFERED COVENANTS, RESTRICTIONS, AND CONDITIONS AFFECTING THIS PROPERTY HAVE BEEN RECORDED AS INST. #050019045.
 - THE LOCATION OF THE PRIVATE MULCH TRAIL AND THE ASPHALT MULTI-PURPOSE TRAIL ARE APPROXIMATE ONLY AND SUBJECT TO CHANGE.

SURVEYORS CERTIFICATE

I HEREBY CERTIFY THAT THE PLAN PREVIOUSLY RECORDED FOR GOVERNOR'S GROVE AT FIVE FORKS, A CONDOMINIUM AT INSTRUMENT NO. 160001088 ACCURATELY DEPICTS THE UNIT AND RELATED IMPROVEMENTS SHOWN AND THAT THEY COMPLY WITH THE CODE OF VIRGINIA OF 1950, AS AMENDED §55-79.58(B) AND ARE SUBSTANTIALLY COMPLETE.

I HEREBY CERTIFY THAT THIS PLAT IS ACCURATE AND THAT IT COMPLIES WITH THE CODE OF VIRGINIA OF 1950, AS AMENDED, §55-79.58, AND I FURTHER CERTIFY THAT ALL IMPROVEMENTS OR PORTIONS THEREOF DEPICTED HEREON, PURSUANT TO THE CODE OF VIRGINIA, §55-79.58(A), ARE SUBSTANTIALLY COMPLETE.

William S. Felts
 WILLIAM S. FELTS LIC. #3149
 08/11/2017
 DATE



JCC Subdivision Agent
 Approval Not Required

2 Large/Small Plat(s) Recorded herewith as # 170016150

City of Williamsburg & County of James City Circuit Court: This PLAT was recorded on August 16, 2017 at 3:14 AM PM PG Document # 170016150 MONA A. FOLEY, CLERK

Elizabeth O'Connor De

PLAT OF PHASE 11A GOVERNOR'S GROVE AT FIVE FORKS A CONDOMINIUM

LOCATED IN THE BERKELEY DISTRICT JAMES CITY COUNTY, VIRGINIA

DATE: 08/11/2017 SCALE: 1" = 100' JOB# 06-460 SHEET: 1 OF 2

LandTech Resources, Inc.
 Engineering & Surveying Consultants

3925 Midlands Road, Williamsburg, VA 23188
 Phone: (757) 565-1677 Fax: (757) 565-0782
 web: landtechresources.com

SURVEYORS CERTIFICATE

I HEREBY CERTIFY THAT THE PLAN PREVIOUSLY RECORDED FOR GOVERNOR'S GROVE AT FIVE FORKS, A CONDOMINIUM AT INSTRUMENT NO. 160009184 ACCURATELY DEPICTS THE UNIT AND RELATED IMPROVEMENTS SHOWN AND THAT THEY COMPLY WITH THE CODE OF VIRGINIA OF 1950, AS AMENDED §55-79.58(B) AND ARE SUBSTANTIALLY COMPLETE.

I HEREBY CERTIFY THAT THIS PLAT IS ACCURATE AND THAT IT COMPLIES WITH THE CODE OF VIRGINIA OF 1950, AS AMENDED, §55-79.58, AND I FURTHER CERTIFY THAT ALL IMPROVEMENTS OR PORTIONS THEREOF DEPICTED HEREON, PURSUANT TO THE CODE OF VIRGINIA, §55-79.58(A), ARE SUBSTANTIALLY COMPLETE.

William S. Felts
WILLIAM S. FELTS LIC. #3149

08/11/2017
DATE



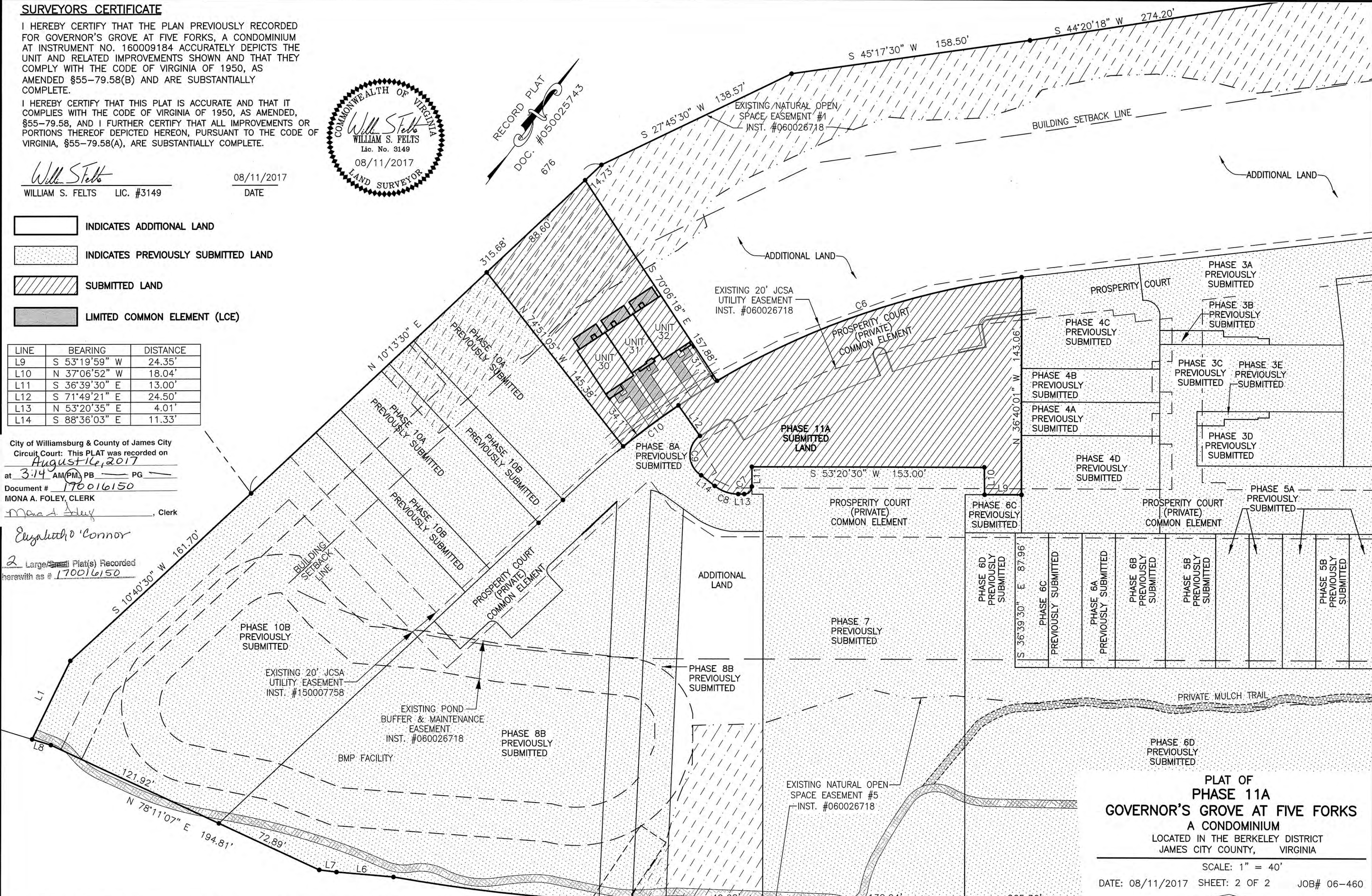
- INDICATES ADDITIONAL LAND
- INDICATES PREVIOUSLY SUBMITTED LAND
- SUBMITTED LAND
- LIMITED COMMON ELEMENT (LCE)

LINE	BEARING	DISTANCE
L9	S 53°19'59" W	24.35'
L10	N 37°06'52" W	18.04'
L11	S 36°39'30" E	13.00'
L12	S 71°49'21" E	24.50'
L13	N 53°20'35" E	4.01'
L14	S 88°36'03" E	11.33'

City of Williamsburg & County of James City
Circuit Court: This PLAT was recorded on
August 16, 2017
at *3:14 AM* PM, PB PG
Document # *170016150*
MONA A. FOLEY, CLERK
Mona A. Foley, Clerk

Eugene D. Connor
2 Large/Small Plat(s) Recorded
herewith as # *170016150*

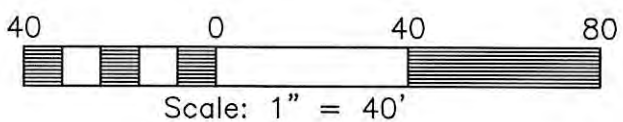
CURVE	RADIUS	LENGTH	CHORD	CHORD BEARING	DELTA
C6	523.62'	213.28'	211.80'	S 34°25'57" W	23°20'14"
C7	5.00'	7.85'	7.07'	N 08°20'30" E	90°00'00"
C8	25.00'	16.61'	16.30'	N 72°22'16" E	38°03'21"
C9	15.63'	30.62'	25.95'	S 38°29'41" E	112°15'09"
C10	523.62'	45.33'	45.32'	S 16°49'07" W	4°57'36"



**JOHN TYLER HIGHWAY
STATE ROUTE #5
(VARIABLE WIDTH PUBLIC R/W)**

**PLAT OF
PHASE 11A
GOVERNOR'S GROVE AT FIVE FORKS
A CONDOMINIUM**
LOCATED IN THE BERKELEY DISTRICT
JAMES CITY COUNTY, VIRGINIA
SCALE: 1" = 40'
DATE: 08/11/2017 SHEET: 2 OF 2 JOB# 06-460

LandTech Resources, Inc.
Engineering & Surveying Consultants
3925 Midlands Road, Williamsburg, VA 23188
Phone: (757) 565-1677 Fax: (757) 565-0782
web: landtechresources.com



JCC Subdivision Agent Approval Not Required