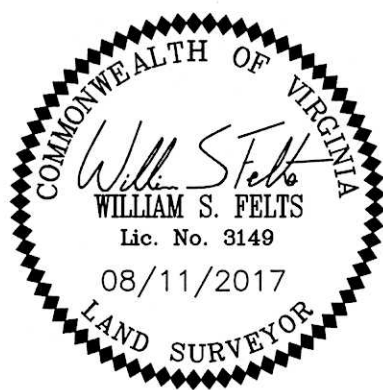


SURVEYORS CERTIFICATE

I HEREBY CERTIFY THAT THE PLAN PREVIOUSLY RECORDED FOR GOVERNOR'S GROVE AT FIVE FORKS, A CONDOMINIUM AT INSTRUMENT NO. 160009184 ACCURATELY DEPICTS THE UNIT AND RELATED IMPROVEMENTS SHOWN AND THAT THEY COMPLY WITH THE CODE OF VIRGINIA OF 1950, AS AMENDED §55-79.58(B) AND ARE SUBSTANTIALLY COMPLETE.

I HEREBY CERTIFY THAT THIS PLAT IS ACCURATE AND THAT IT COMPLIES WITH THE CODE OF VIRGINIA OF 1950, AS AMENDED, §55-79.58, AND I FURTHER CERTIFY THAT ALL IMPROVEMENTS OR PORTIONS THEREOF DEPICTED HEREON, PURSUANT TO THE CODE OF VIRGINIA, §55-79.58(A), ARE SUBSTANTIALLY COMPLETE.



William S. Felts
WILLIAM S. FELTS LIC. #3149
08/11/2017
DATE

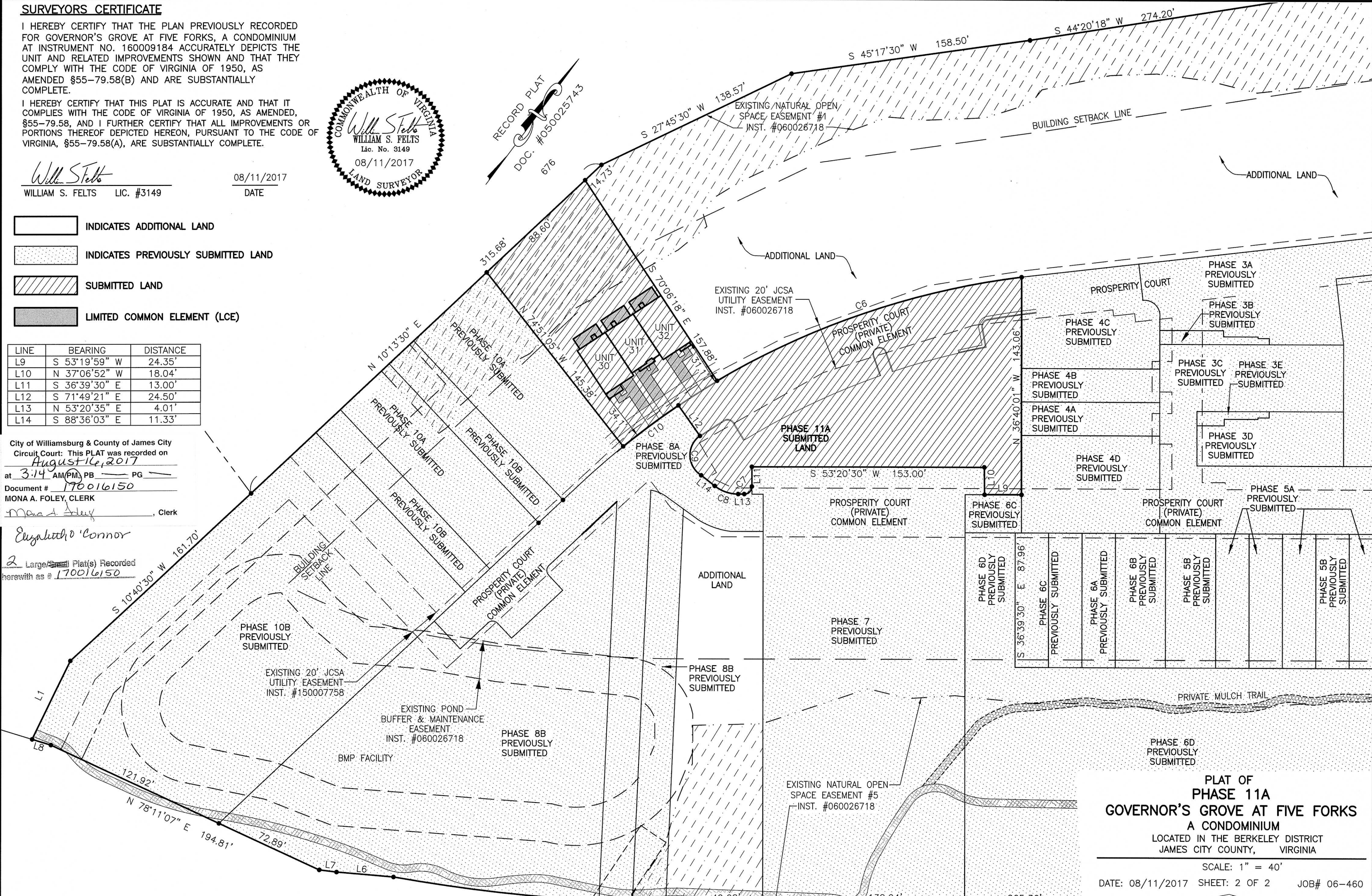
- INDICATES ADDITIONAL LAND
- INDICATES PREVIOUSLY SUBMITTED LAND
- SUBMITTED LAND
- LIMITED COMMON ELEMENT (LCE)

LINE	BEARING	DISTANCE
L9	S 53°19'59" W	24.35'
L10	N 37°06'52" W	18.04'
L11	S 36°39'30" E	13.00'
L12	S 71°49'21" E	24.50'
L13	N 53°20'35" E	4.01'
L14	S 88°36'03" E	11.33'

City of Williamsburg & County of James City
Circuit Court: This PLAT was recorded on
August 16, 2017
at *3:14 AM* (PM, PB, PG)
Document # *170016150*
MONA A. FOLEY, CLERK
Mona A. Foley, Clerk

Eugene D. Connor
2 Large/Small Plat(s) Recorded
herewith as # *170016150*

CURVE	RADIUS	LENGTH	CHORD	CHORD BEARING	DELTA
C6	523.62'	213.28'	211.80'	S 34°25'57" W	23°20'14"
C7	5.00'	7.85'	7.07'	N 08°20'30" E	90°00'00"
C8	25.00'	16.61'	16.30'	N 72°22'16" E	38°03'21"
C9	15.63'	30.62'	25.95'	S 38°29'41" E	112°15'09"
C10	523.62'	45.33'	45.32'	S 16°49'07" W	4°57'36"



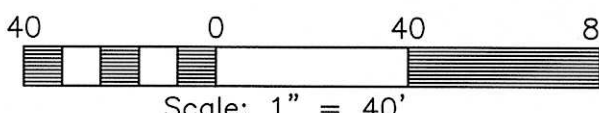
JOHN TYLER HIGHWAY
STATE ROUTE #5
(VARIABLE WIDTH PUBLIC R/W)

PLAT OF
PHASE 11A
GOVERNOR'S GROVE AT FIVE FORKS
A CONDOMINIUM
LOCATED IN THE BERKELEY DISTRICT
JAMES CITY COUNTY, VIRGINIA

SCALE: 1" = 40'
DATE: 08/11/2017 SHEET: 2 OF 2 JOB# 06-460

LandTech Resources, Inc.
Engineering & Surveying Consultants

3925 Midlands Road, Williamsburg, VA 23188
Phone: (757) 565-1677 Fax: (757) 565-0782
web: landtechresources.com



JCC Subdivision Agent
Approval Not Required