

170012238

SEE INSET AT RIGHT FOR L228 THRU L233

LEGEND

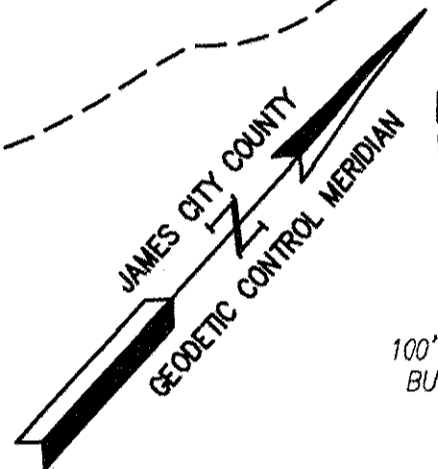
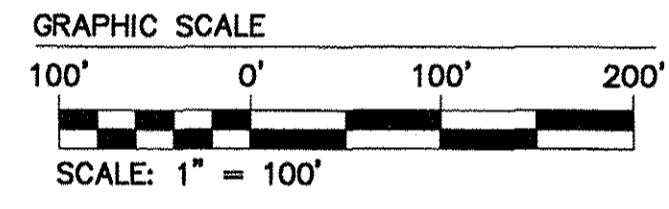
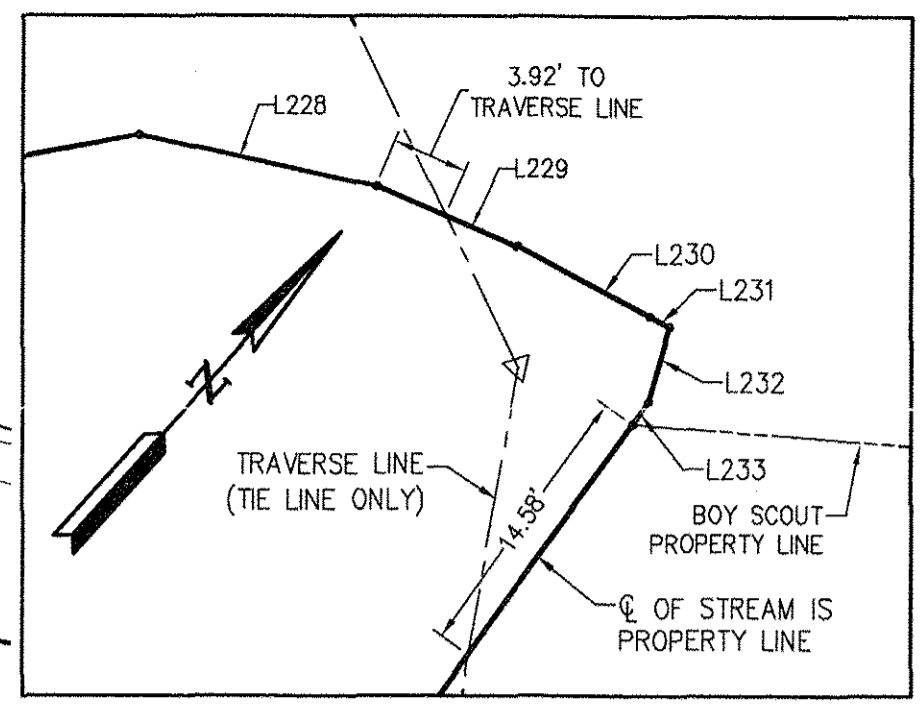
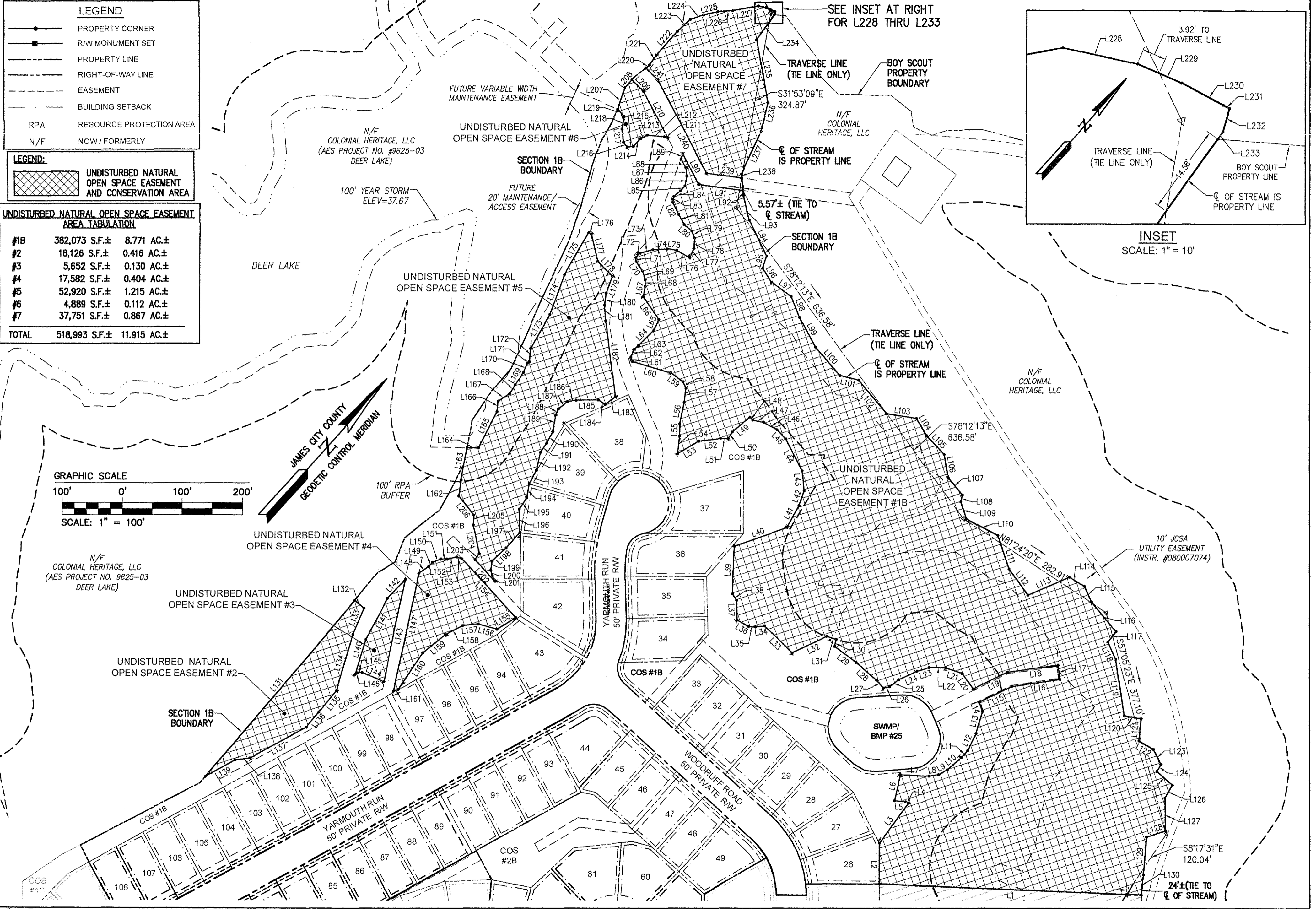
- PROPERTY CORNER
- R/W MONUMENT SET
- PROPERTY LINE
- PROPERTY LINE
- - - RIGHT-OF-WAY LINE
- - - EASEMENT
- - - BUILDING SETBACK
- RPA RESOURCE PROTECTION AREA
- N/F NOW / FORMERLY

LEGEND:

UNDISTURBED NATURAL OPEN SPACE EASEMENT AND CONSERVATION AREA

UNDISTURBED NATURAL OPEN SPACE EASEMENT AREA TABULATION

#1B	382,073 S.F.±	8.771 AC.±
#2	18,126 S.F.±	0.416 AC.±
#3	5,652 S.F.±	0.130 AC.±
#4	17,582 S.F.±	0.404 AC.±
#5	52,920 S.F.±	1.215 AC.±
#6	4,889 S.F.±	0.112 AC.±
#7	37,751 S.F.±	0.867 AC.±
TOTAL	518,993 S.F.±	11.915 AC.±

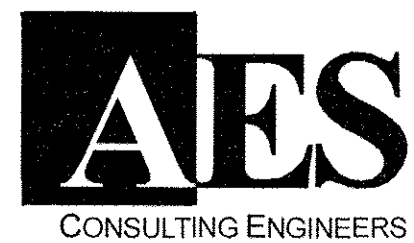
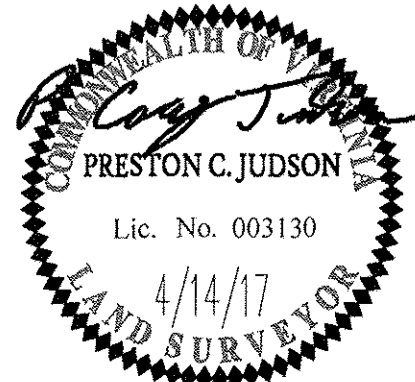


N/F COLONIAL HERITAGE, LLC (AES PROJECT NO. 9625-03 DEER LAKE)

S:\JOB\8881-61-Phase VI-Sub\Plat\Surf\Plat\Phase VI-1B-Plat (59 Lots) 8881-61-SubD P07 and P08.dwg - J 26/2017 1:56:56 PM PDF - XChange for AcroPlot Pro.p3

Large/Small Plat(s) Recorded herewith as #170012238

City of Williamsburg & County of James City Circuit Court: This PLAT was recorded on **JUNE 14, 2017** at **11:02 AM** PM, PB PG. Document # **170012238** MONA A. FOLEY, CLERK



614 Moorefield Park Drive
Richmond, Virginia 23236-3655
Phone: (804) 330-8040
Fax: (804) 330-9840
www.aesva.com

JCC NO. S-0004-2016

PLAT OF SUBDIVISION
LOTS 26-49, 59-64, AND 80-108
COLONIAL HERITAGE PHASE VI - SECTION 1B
OWNER / DEVELOPER: COLONIAL HERITAGE, LLC

STONEHOUSE DISTRICT JAMES CITY COUNTY VIRGINIA

Project Contacts:	PCJ/TRS
Project Number:	8881-61B
Scale:	1"=100'
Date:	02/16/17
Sheet Number	7 OF 8

Rev.	Date	Description	Revised by
1	04/14/17	REVISED PER COUNTY COMMENTS	RMS