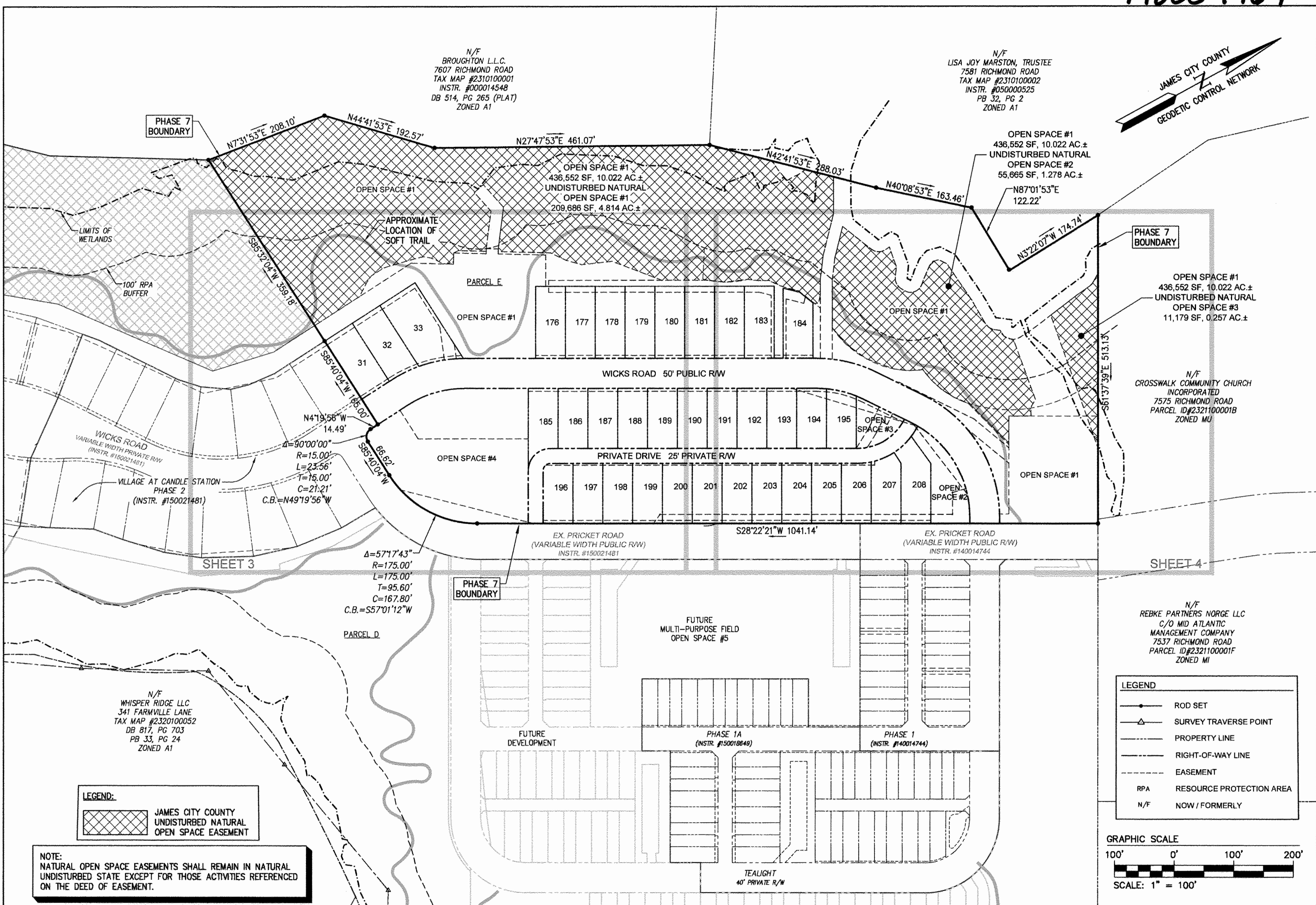


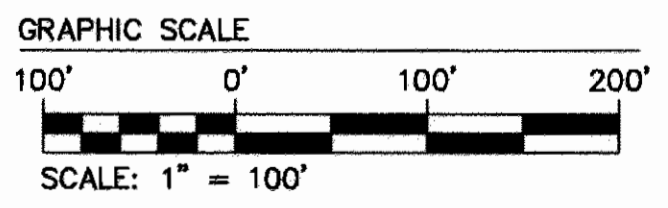
N/F
BROUGHTON L.L.C.
7607 RICHMOND ROAD
TAX MAP #2310100001
INSTR. #000014548
DB 514, PG 265 (PLAT)
ZONED A1

N/F
LISA JOY MARSTON, TRUSTEE
7581 RICHMOND ROAD
TAX MAP #2310100002
INSTR. #050000525
PB 32, PG 2
ZONED A1



LEGEND:
 JAMES CITY COUNTY UNDISTURBED NATURAL OPEN SPACE EASEMENT

LEGEND
 ROD SET
 SURVEY TRAVERSE POINT
 PROPERTY LINE
 RIGHT-OF-WAY LINE
 EASEMENT
 RPA RESOURCE PROTECTION AREA
 N/F NOW / FORMERLY

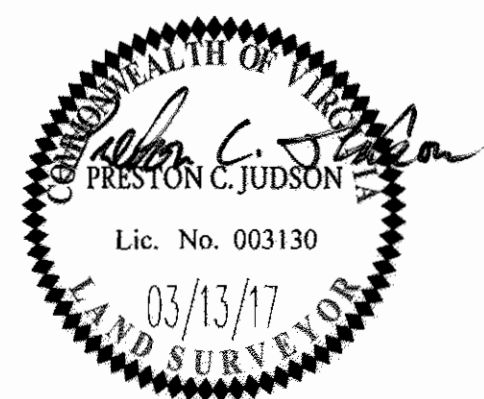


NOTE:
 NATURAL OPEN SPACE EASEMENTS SHALL REMAIN IN NATURAL UNDISTURBED STATE EXCEPT FOR THOSE ACTIVITIES REFERENCED ON THE DEED OF EASEMENT.

N/F
WHISPER RIDGE LLC
341 FARMVILLE LANE
TAX MAP #2320100052
DB 817, PG 703
PB 33, PG 24
ZONED A1

N/F
REBKE PARTNERS NORGE LLC
C/O MID ATLANTIC MANAGEMENT COMPANY
7537 RICHMOND ROAD
PARCEL ID#2321100001F
ZONED M1

Large/Small Plat(s) Recorded	City of Williamsburg & County of James City Circuit Court: This PLAT was recorded on		
Herewith as # 170009969	MAY 16, 2017		
	at 10:30 AM PM, PB PG		
	Document # 170009969		
	MONA A. FOLEY, CLERK		
	Mona A. Foley, Clerk		
1 03/13/17	REVISIONS PER COMMENTS	JAG	
Rev.	Date	Description	Revised By

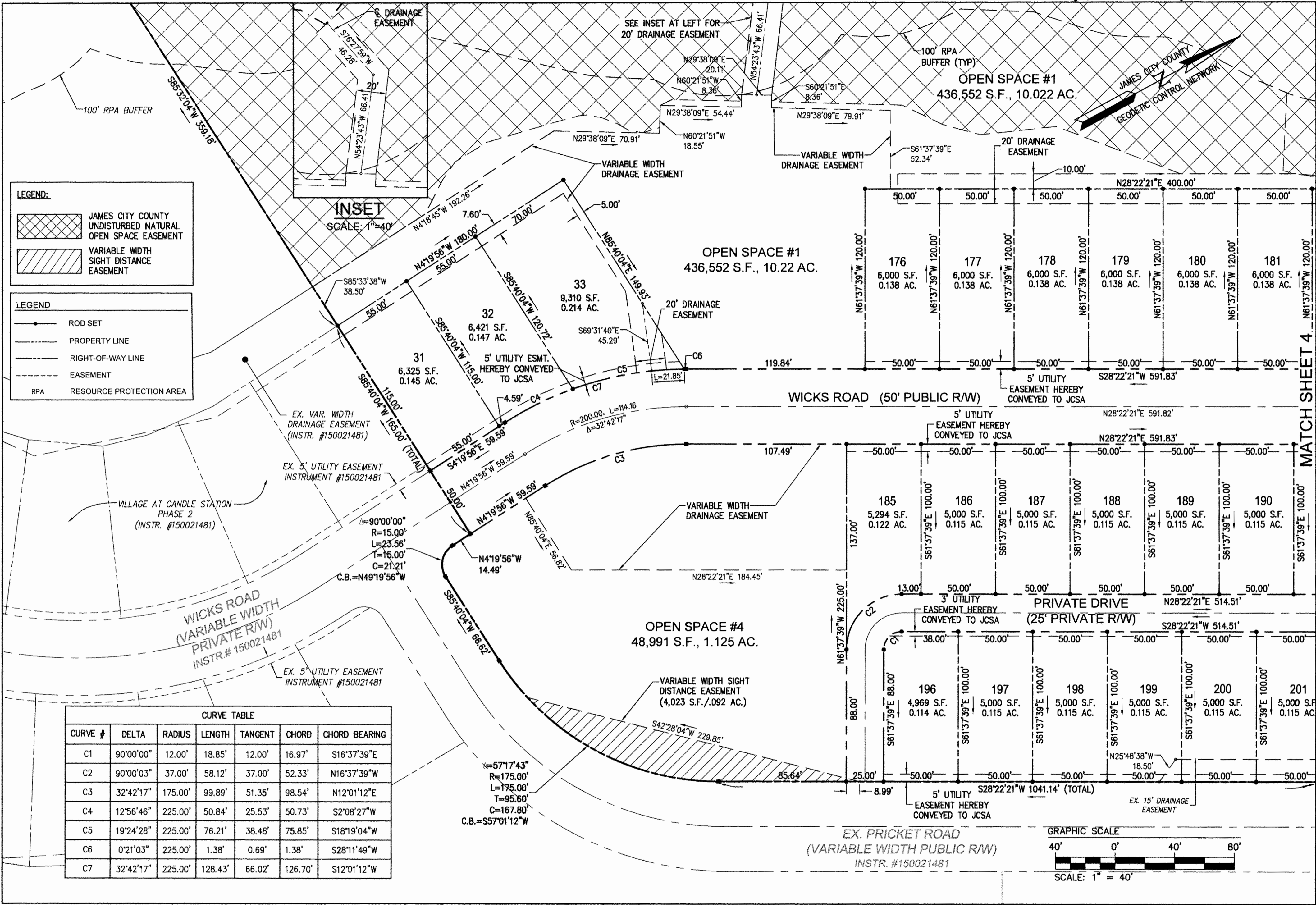


AES
 CONSULTING ENGINEERS
 5248 Olde Towne Road, Suite 1
 Williamsburg, Virginia 23188
 Phone: (757) 253-0040
 Fax: (757) 220-8994
 www.aesva.com
 Hampton Roads | Central Virginia | Middle Peninsula

PLAT OF SUBDIVISION
VILLAGE AT CANDLE STATION
 PHASE 7, LOTS 31-33 AND 176-208
 AND OPEN SPACES #1 THRU #4
 FOR: CANDLE DEVELOPMENT, LLC
 STONEHOUSE DISTRICT JAMES CITY COUNTY VIRGINIA

Project Contacts:	JAG/PCJ
Project Number:	W10059-01
Scale:	1"=100'
Date:	02/02/17
Sheet Number	2 of 4

170009969



LEGEND:
 JAMES CITY COUNTY UNDISTURBED NATURAL OPEN SPACE EASEMENT
 VARIABLE WIDTH SIGHT DISTANCE EASEMENT

LEGEND:
 ROD SET
 PROPERTY LINE
 RIGHT-OF-WAY LINE
 EASEMENT
 RPA RESOURCE PROTECTION AREA

CURVE TABLE

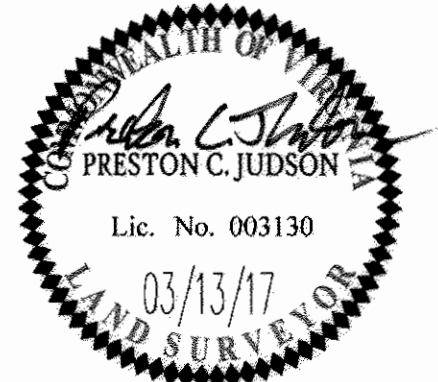
CURVE #	DELTA	RADIUS	LENGTH	TANGENT	CHORD	CHORD BEARING
C1	90°00'00"	12.00'	18.85'	12.00'	16.97'	S16°37'39"E
C2	90°00'03"	37.00'	58.12'	37.00'	52.33'	N16°37'39"W
C3	32°42'17"	175.00'	99.89'	51.35'	98.54'	N12°01'12"E
C4	12°56'46"	225.00'	50.84'	25.53'	50.73'	S2°08'27"W
C5	19°24'28"	225.00'	76.21'	38.48'	75.85'	S18°19'04"W
C6	0°21'03"	225.00'	1.38'	0.69'	1.38'	S28°11'49"W
C7	32°42'17"	225.00'	128.43'	66.02'	126.70'	S12°01'12"W

MATCH SHEET 4

4 Large/Small Plats Recorded herewith as # 170009969

Rev	Date	Description	Revised By
1	03/13/17		JAG

City of Williamsburg & County of James City
 Circuit Court: This PLAT was recorded on
MAY 16, 2017
 at 10:30 AM/PM, PB PG
 Document # **170009969**
 MONA A. FOLEY, CLERK
 Clerk



PLAT OF SUBDIVISION
VILLAGE AT CANDLE STATION
 PHASE 7, LOTS 31-33 AND 176-208
 AND OPEN SPACES #1 THRU #4
 FOR: CANDLE DEVELOPMENT, LLC

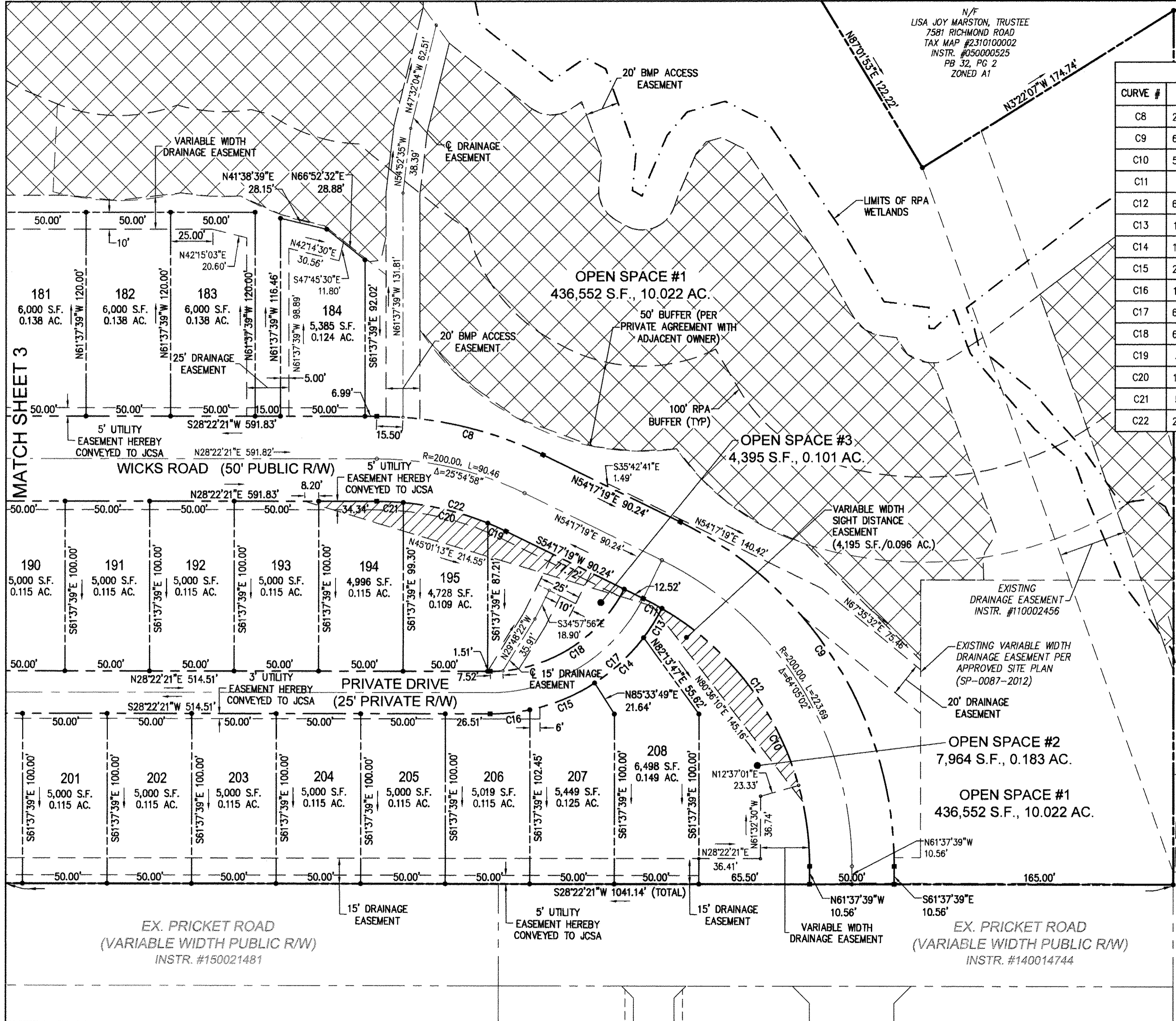
STONEHOUSE DISTRICT JAMES CITY COUNTY VIRGINIA

Project Contacts: JAG/PCJ
 Project Number: W10059-01
 Scale: 1"=40'
 Date: 02/02/17
 Sheet Number
3 of 4

170009969

N/F
LISA JOY MARSTON, TRUSTEE
7581 RICHMOND ROAD
TAX MAP #2310100002
INSTR. #05000525
PB 32, PG 2
ZONED A1

CURVE TABLE						
CURVE #	DELTA	RADIUS	LENGTH	TANGENT	CHORD	CHORD BEARING
C8	25°54'58"	225.00'	101.77'	51.77'	100.91'	S41°19'50"W
C9	64°05'02"	225.00'	251.66'	140.82'	238.74'	S86°19'50"W
C10	59°59'44"	175.00'	183.25'	101.03'	174.99'	N88°22'29"E
C11	4°05'18"	175.00'	12.49'	6.25'	12.48'	N56°19'58"E
C12	64°05'02"	175.00'	195.73'	109.53'	185.69'	N86°19'50"E
C13	10°13'17"	114.00'	20.34'	10.20'	20.31'	N29°26'23"W
C14	19°53'33"	114.00'	39.58'	19.99'	39.38'	N14°22'58"W
C15	20°54'58"	114.00'	41.62'	21.04'	41.39'	N6°01'18"E
C16	11°53'34"	114.00'	23.66'	11.87'	23.62'	N22°25'34"E
C17	62°55'22"	114.00'	125.20'	69.75'	119.00'	N3°05'20"W
C18	62°53'00"	89.00'	97.68'	54.41'	92.85'	S3°04'09"E
C19	3°52'42"	175.00'	11.85'	5.92'	11.84'	N52°20'58"E
C20	16°54'10"	175.00'	51.63'	26.00'	51.44'	N41°57'33"E
C21	5°08'07"	175.00'	15.68'	7.85'	15.68'	N30°56'24"E
C22	25°54'58"	175.00'	79.16'	40.27'	78.48'	N41°19'50"E



LEGEND:

- JAMES CITY COUNTY UNDISTURBED NATURAL OPEN SPACE EASEMENT
- VARIABLE WIDTH SIGHT DISTANCE EASEMENT
- ROD SET
- SURVEY TRAVERSE POINT
- PROPERTY LINE
- RIGHT-OF-WAY LINE
- EASEMENT
- RPA RESOURCE PROTECTION AREA

LEGEND:

- VAR. WIDTH DRAINAGE EASEMENT #110013115

JAMES CITY COUNTY
GEODETIC CONTROL NETWORK

GRAPHIC SCALE
40' 0' 40' 80'
SCALE: 1" = 40'

City of Williamsburg & County of James City Circuit Court: This PLAT was recorded on **MAY 16, 2017** at 10:30 AM PM, PB PG Document # **170009969** MONA A. FOLEY, CLERK

4 Large Small Plat(s) Recorded here with as # **170009969**

Rev.	Date	Description	Revised By
1	03/13/17	REVISIONS PER COMMENTS	JAG

PRESTON C. JUDSON
Lic. No. 003130
03/13/17
LAND SURVEYOR

AES
CONSULTING ENGINEERS
Hampton Roads | Central Virginia | Middle Peninsula
5248 Olde Towne Road, Suite 1
Williamsburg, Virginia 23188
Phone: (757) 253-0040
Fax: (757) 220-8994
www.aesva.com

PLAT OF SUBDIVISION
VILLAGE AT CANDLE STATION
PHASE 7, LOTS 31-33 AND 176-208
AND OPEN SPACES #1 THRU #4
FOR: CANDLE DEVELOPMENT, LLC
STONEHOUSE DISTRICT JAMES CITY COUNTY VIRGINIA

Project Contacts: JAG/PCJ
Project Number: W10059-01
Scale: 1"=40' Date: 02/02/17
Sheet Number
4 of 4