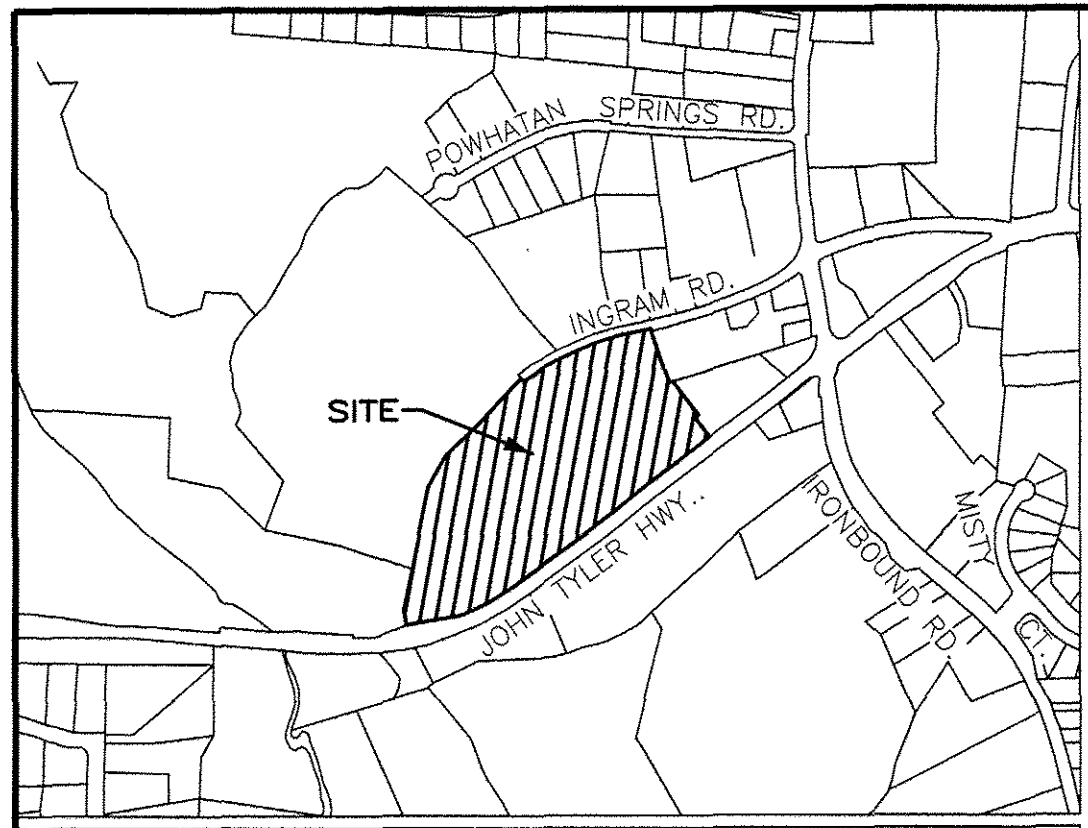
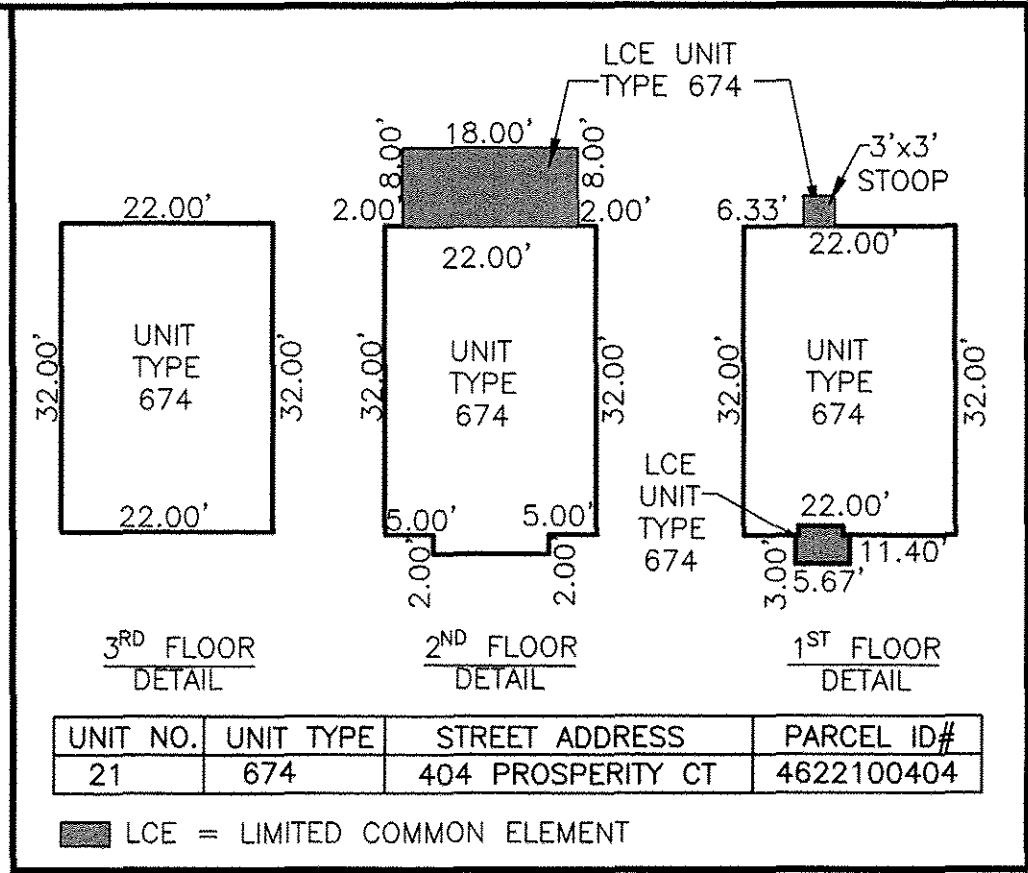


170006747



VICINITY MAP - NOT TO SCALE



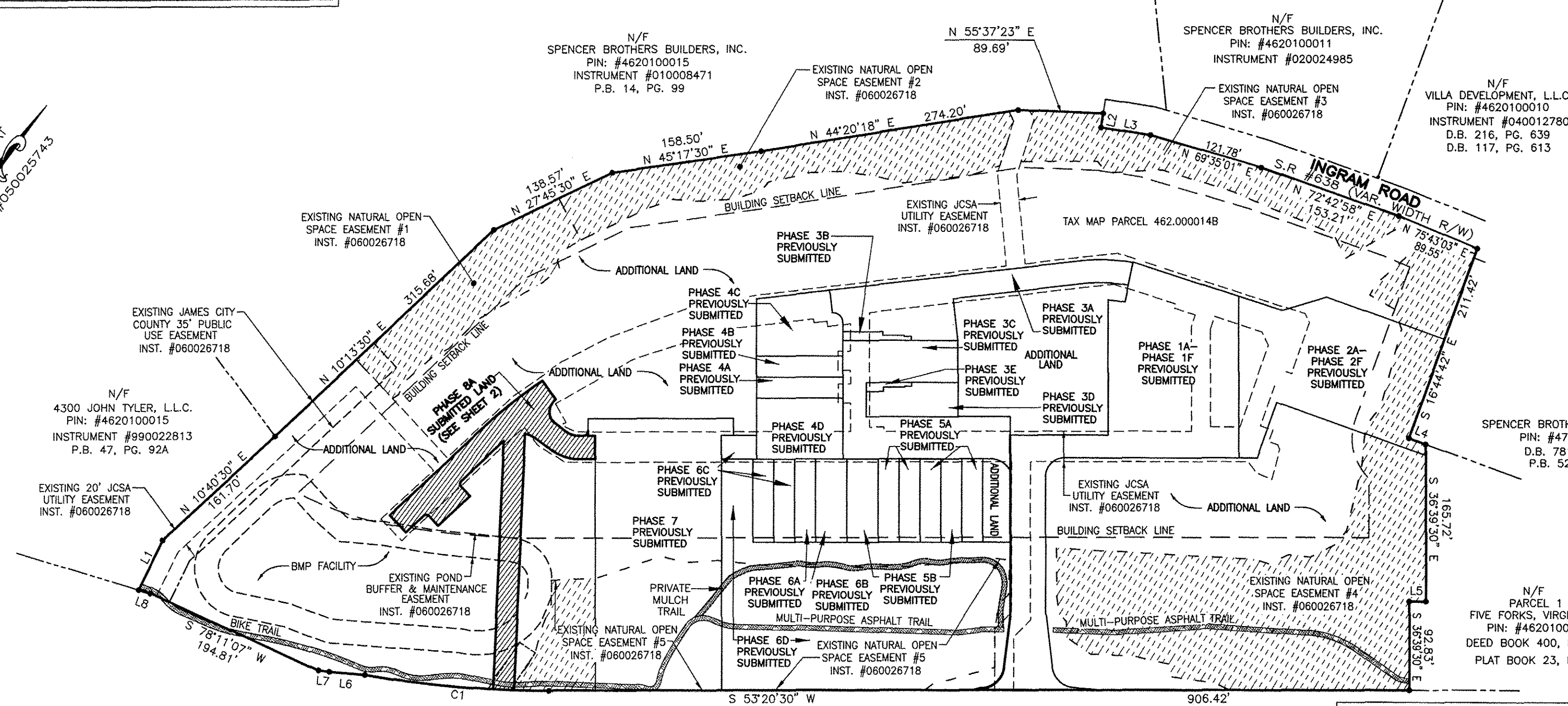
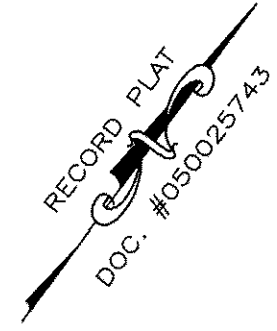
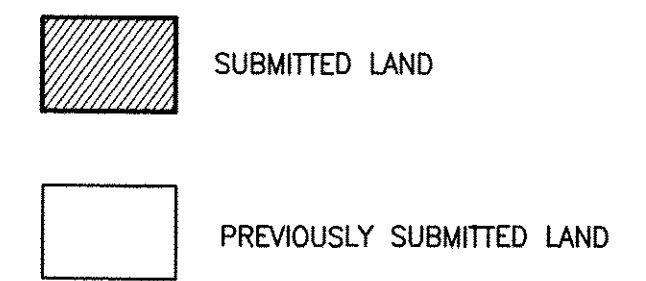
AREA TABLE

PARCEL	SQ. FT.	ACRES
PHASE 8A SUBMITTED LAND	14,152	0.325
PREVIOUSLY SUBMITTED LAND	218,595	5.018
ADDITIONAL LAND	420,489	9.653
TOTAL	653,236	14.996

PLAT OF
PHASE 8A
GOVERNOR'S GROVE AT FIVE FORKS
 A CONDOMINIUM
 LOCATED IN THE BERKELEY DISTRICT
 JAMES CITY COUNTY, VIRGINIA
 DATE: 03/24/2017 SCALE: 1" = 100' JOB# 06-460
 SHEET: 1 OF 2

LandTech Resources, Inc.
 Engineering & Surveying Consultants
 3925 Midlands Road, Williamsburg, VA 23188
 Phone: (757) 565-1677 Fax: (757) 565-0782
 web: landtechresources.com

JCC Subdivision Agent Approval Not Required



2 Large Small Plat(s) Recorded
 herewith as # 170006747

City of Williamsburg & County of James City
 Circuit Court: This PLAT was recorded on
 3-30-2017
 at 9:27 AM PM, PB PG
 Document # 170006747
 MONA A. FOLEY, CLERK

GENERAL NOTES

- THIS PLAT WAS PRODUCED WITHOUT A TITLE REPORT AND MAY NOT REFLECT ALL MATTERS AFFECTING PROPERTY.
- THIS PROPERTY APPEARS TO FALL IN ZONE "X" AS SHOWN ON FLOOD INSURANCE RATE MAP 51095C0119D, DATED DECEMBER 16, 2015.
- ALL UNITS TO BE SERVED BY PUBLIC WATER AND SEWER.
- ALL LAND AND IMPROVEMENTS OUTSIDE OF BUILDINGS AND WITHIN PHASE LIMITS SHALL BE KNOWN AS COMMON ELEMENT EXCEPT FOR LIMITED COMMON ELEMENTS DESIGNATED ON PLAT AND BUILDING PLANS.
- THIS PARCEL OF LAND WAS CONVEYED TO GOVERNOR'S GROVE AT FIVE FORKS, L.L.C. BY DEED RECORDED IN INSTRUMENT #070006512.
- THE STREETS WITHIN THIS CONDOMINIUM SHALL BE KNOWN AS COMMON ELEMENT AND NOT A PUBLIC DEDICATED RIGHT-OF-WAY.
- PHASE 8A IS SUBMITTED LAND. THE REMAINING PROPERTY HAS BEEN PREVIOUSLY SUBMITTED OR IS ADDITIONAL LAND. ALL ADDITIONAL LAND AND ALL COMMON ELEMENTS ARE WITHDRAWABLE LAND.
- PROFFERED COVENANTS, RESTRICTIONS, AND CONDITIONS AFFECTING THIS PROPERTY HAVE BEEN RECORDED AS INST. #050019045.
- THE LOCATION OF THE PRIVATE MULCH TRAIL AND THE ASPHALT MULTI-PURPOSE TRAIL ARE APPROXIMATE ONLY AND SUBJECT TO CHANGE.

JOHN TYLER HIGHWAY
STATE ROUTE #5
 (VARIABLE WIDTH PUBLIC R/W)

CURVE TABLE

NO.	DELTA	CHORD BEARING	RADIUS	ARC	CHORD
C1	10°00'21"	S 58°20'41" W	1116.00'	194.89'	194.64'

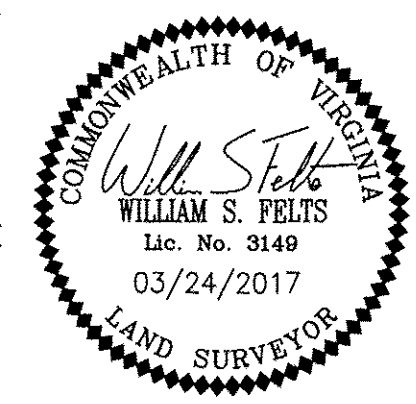
SURVEYORS CERTIFICATE

I HEREBY CERTIFY THAT THE PLAN PREVIOUSLY RECORDED FOR GOVERNOR'S GROVE AT FIVE FORKS, A CONDOMINIUM AT INSTRUMENT NO. 160009184 ACCURATELY DEPICT THE UNITS AND RELATED IMPROVEMENTS SHOWN AND THAT THEY COMPLY WITH THE CODE OF VIRGINIA OF 1950, AS AMENDED 55-79.58(B) AND ARE SUBSTANTIALLY COMPLETE.

I HEREBY CERTIFY THAT THIS PLAT IS ACCURATE AND COMPLIES WITH THE PROVISIONS OF SECTION 55-79.58 (A) OF THE CODE OF VIRGINIA 1950 AS AMENDED.

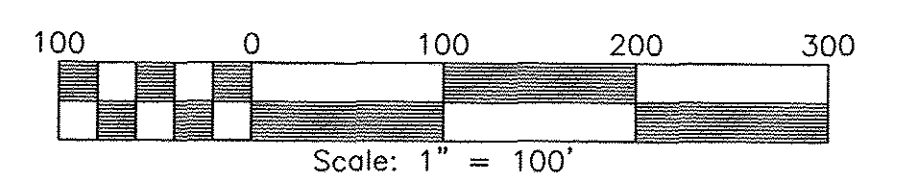
William S. Felts
 WILLIAM S. FELTS LIC. #3149

03/24/2017
 DATE



LINE TABLE

NO.	DIRECTION	DISTANCE
L1	N 10°44'30" W	57.40'
L2	S 27°48'08" E	15.00'
L3	N 62°11'52" E	52.25'
L4	N 73°15'18" E	18.75'
L5	S 53°20'30" W	17.63'
L6	S 58°14'37" W	37.63'
L7	S 60°24'36" W	11.43'
L8	S 70°12'23" W	12.96'



170006747

SURVEYORS CERTIFICATE

I HEREBY CERTIFY THAT THE PLAN PREVIOUSLY RECORDED FOR GOVERNOR'S GROVE AT FIVE FORKS, A CONDOMINIUM AT INSTRUMENT NO. 160009184 ACCURATELY DEPICT THE UNITS AND RELATED IMPROVEMENTS SHOWN AND THAT THEY COMPLY WITH THE CODE OF VIRGINIA OF 1950, AS AMENDED 55-79.58(B) AND ARE SUBSTANTIALLY COMPLETE.

I HEREBY CERTIFY THAT THIS PLAT IS ACCURATE AND COMPLIES WITH THE PROVISIONS OF SECTION 55-79.58 (A) OF THE CODE OF VIRGINIA 1950 AS AMENDED.

William S. Felts
WILLIAM S. FELTS LIC. #3149

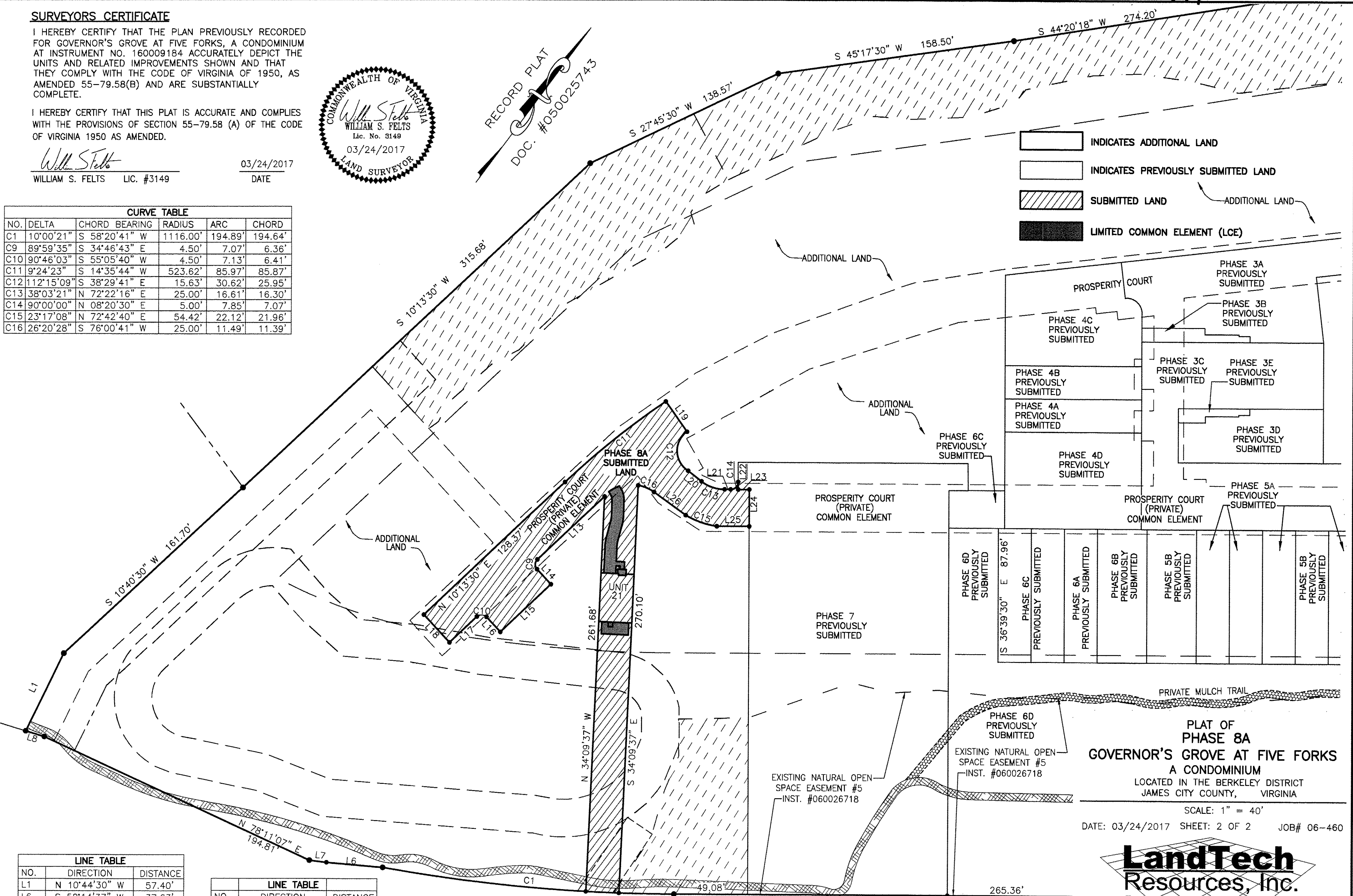
03/24/2017
DATE



RECORD PLAT
DOC. #050025743

CURVE TABLE					
NO.	DELTA	CHORD BEARING	RADIUS	ARC	CHORD
C1	10°00'21"	S 58°20'41" W	1116.00'	194.89'	194.64'
C9	89°59'35"	S 34°46'43" E	4.50'	7.07'	6.36'
C10	90°46'03"	S 55°05'40" W	4.50'	7.13'	6.41'
C11	9°24'23"	S 14°35'44" W	523.62'	85.97'	85.87'
C12	112°15'09"	S 38°29'41" E	15.63'	30.62'	25.95'
C13	38°03'21"	N 72°22'16" E	25.00'	16.61'	16.30'
C14	90°00'00"	N 08°20'30" E	5.00'	7.85'	7.07'
C15	23°17'08"	N 72°42'40" E	54.42'	22.12'	21.96'
C16	26°20'28"	S 76°00'41" W	25.00'	11.49'	11.39'

- INDICATES ADDITIONAL LAND
- INDICATES PREVIOUSLY SUBMITTED LAND
- SUBMITTED LAND
- LIMITED COMMON ELEMENT (LCE)



LINE TABLE		
NO.	DIRECTION	DISTANCE
L1	N 10°44'30" W	57.40'
L6	S 58°14'37" W	37.63'
L7	S 60°24'36" W	11.43'
L8	S 70°12'23" W	12.96'
L13	S 10°13'38" W	61.11'
L14	S 79°46'30" E	13.49'
L15	S 10°13'30" W	46.00'
L16	N 79°45'59" W	13.48'
L17	S 10°08'41" W	24.95'
L18	N 79°46'30" W	25.03'

LINE TABLE		
NO.	DIRECTION	DISTANCE
L19	S 71°49'21" E	24.50'
L20	S 88°36'03" E	11.33'
L21	N 53°20'35" E	4.01'
L22	S 36°39'30" E	5.06'
L23	N 53°19'59" E	7.41'
L24	S 36°39'30" E	24.44'
L25	S 53°19'59" W	21.56'
L26	S 89°10'55" W	26.08'

2 Large/Small Plat(s) Recorded
herewith as # 170006747

City of Williamsburg & County of James City
Circuit Court: This PLAT was recorded on
3-30-2017
at 9:27 AM PM, PB PG
Document # 170006747
MONA A. FOLEY, CLERK
Mona Foley, Clerk

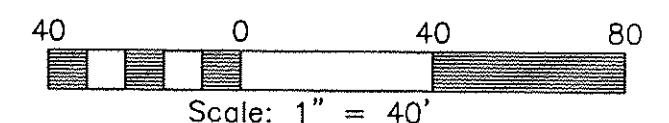
JCC Subdivision Agent
Approval Not Required *EL*

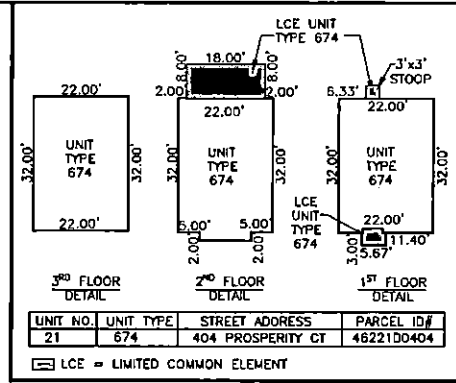
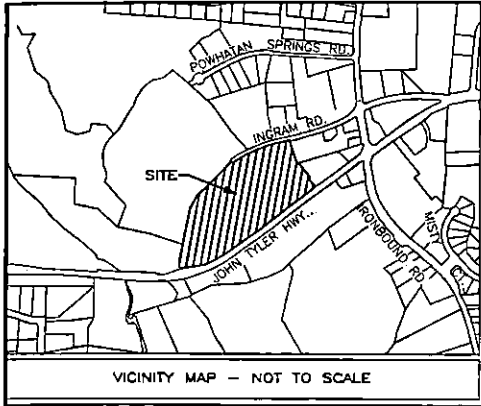
**PLAT OF
PHASE 8A
GOVERNOR'S GROVE AT FIVE FORKS
A CONDOMINIUM**
LOCATED IN THE BERKELEY DISTRICT
JAMES CITY COUNTY, VIRGINIA

SCALE: 1" = 40'
DATE: 03/24/2017 SHEET: 2 OF 2 JOB# 06-460



3925 Midlands Road, Williamsburg, VA 23188
Phone: (757) 565-1677 Fax: (757) 565-0782
web: landtechresources.com



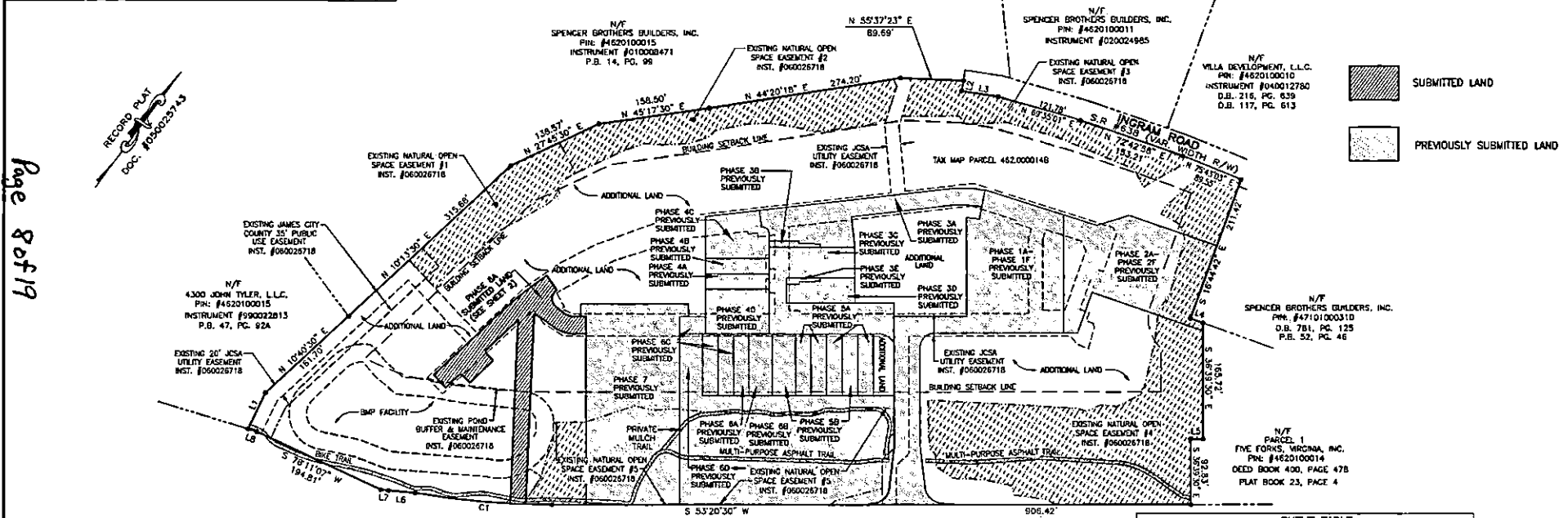


AREA TABLE

PARCEL	SQ. FT.	ACRES
PHASE 8A SUBMITTED LAND	14,152	0.325
PREVIOUSLY SUBMITTED LAND	218,595	5.018
ADDITIONAL LAND	420,489	9.653
TOTAL	653,236	14.996

PLAT OF
PHASE 8A
GOVERNOR'S GROVE AT FIVE FORKS
 A CONDOMINIUM
 LOCATED IN THE BERKELEY DISTRICT
 JAMES CITY COUNTY, VIRGINIA
 DATE: 03/24/2017 SCALE: 1" = 100' JOB# 06-460
 SHEET: 1 OF 2

LandTech Resources, Inc.
 Engineering & Surveying Consultants
 3925 Midlands Road, Williamsburg, VA 23188
 Phone: (757) 565-1677 Fax: (757) 565-0782
 web: landtechresources.com



SUBMITTED LAND
 PREVIOUSLY SUBMITTED LAND

CURVE TABLE

NO.	DELTA	CHORD BEARING	RADIUS	ARC	CHORD
C1	10°00'21"	S 58°20'41" W	1116.00'	194.89'	194.64'

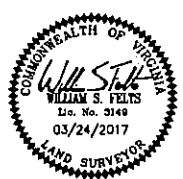
- GENERAL NOTES**
- THIS PLAT WAS PRODUCED WITHOUT A TITLE REPORT AND MAY NOT REFLECT ALL MATTERS AFFECTING PROPERTY.
 - THIS PROPERTY APPEARS TO FALL IN ZONE "X" AS SHOWN ON FLOOD INSURANCE RATE MAP 51095C01190, DATED DECEMBER 16, 2015.
 - ALL UNITS TO BE SERVED BY PUBLIC WATER AND SEWER.
 - ALL LAND AND IMPROVEMENTS OUTSIDE OF BUILDINGS AND WITHIN PHASE LIMITS SHALL BE KNOWN AS COMMON ELEMENT EXCEPT FOR LIMITED COMMON ELEMENTS DESIGNATED ON PLAT AND BUILDING PLANS.
 - THIS PARCEL OF LAND WAS CONVEYED TO GOVERNOR'S GROVE AT FIVE FORKS, L.L.C. BY DEED RECORDED IN INSTRUMENT #070006512.
 - THE STREETS WITHIN THIS CONDOMINIUM SHALL BE KNOWN AS COMMON ELEMENT AND NOT A PUBLIC DEDICATED RIGHT-OF-WAY.
 - PHASE 8A IS SUBMITTED LAND. THE REMAINING PROPERTY HAS BEEN PREVIOUSLY SUBMITTED OR IS ADDITIONAL LAND. ALL ADDITIONAL LAND AND ALL COMMON ELEMENTS ARE WITHDRAWABLE LAND.
 - PROFFERED COVENANTS, RESTRICTIONS, AND CONDITIONS AFFECTING THIS PROPERTY HAVE BEEN RECORDED AS INST. #050018045.
 - THE LOCATION OF THE PRIVATE MULCH TRAIL AND THE ASPHALT MULTI-PURPOSE TRAIL ARE APPROXIMATE ONLY AND SUBJECT TO CHANGE.

SURVEYORS CERTIFICATE

I HEREBY CERTIFY THAT THE PLAN PREVIOUSLY RECORDED FOR GOVERNOR'S GROVE AT FIVE FORKS, A CONDOMINIUM AT INSTRUMENT NO. 160009184 ACCURATELY DEPICT THE UNITS AND RELATED IMPROVEMENTS SHOWN AND THAT THEY COMPLY WITH THE CODE OF VIRGINIA OF 1950, AS AMENDED 55-79.58(B) AND ARE SUBSTANTIALLY COMPLETE.

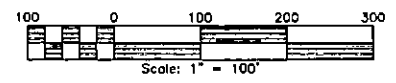
I HEREBY CERTIFY THAT THIS PLAT IS ACCURATE AND COMPLIES WITH THE PROVISIONS OF SECTION 55-79.58 (A) OF THE CODE OF VIRGINIA 1950 AS AMENDED.

William S. Felts
 WILLIAM S. FELTS LIC. #3149
 03/24/2017
 DATE



LINE TABLE

NO.	DIRECTION	DISTANCE
L1	N 10°44'30" W	57.40'
L2	S 27°48'08" E	15.00'
L3	N 62°11'52" E	52.25'
L4	N 73°15'18" E	18.75'
L5	S 53°20'30" W	17.63'
L6	S 58°14'37" W	37.63'
L7	S 60°24'36" W	11.43'
L8	S 70°12'23" W	12.96'



Page 8 of 19

SURVEYORS CERTIFICATE

I HEREBY CERTIFY THAT THE PLAN PREVIOUSLY RECORDED FOR GOVERNOR'S GROVE AT FIVE FORKS, A CONDOMINIUM AT INSTRUMENT NO. 160009184 ACCURATELY DEPICT THE UNITS AND RELATED IMPROVEMENTS SHOWN AND THAT THEY COMPLY WITH THE CODE OF VIRGINIA OF 1950, AS AMENDED 55-79.58(b) AND ARE SUBSTANTIALLY COMPLETE.

I HEREBY CERTIFY THAT THIS PLAN IS ACCURATE AND COMPLIES WITH THE PROVISIONS OF SECTION 55-79.58 (A) OF THE CODE OF VIRGINIA 1950 AS AMENDED.

William S. Felts
WILLIAM S. FELTS LIC. #3149

03/24/2017
DATE



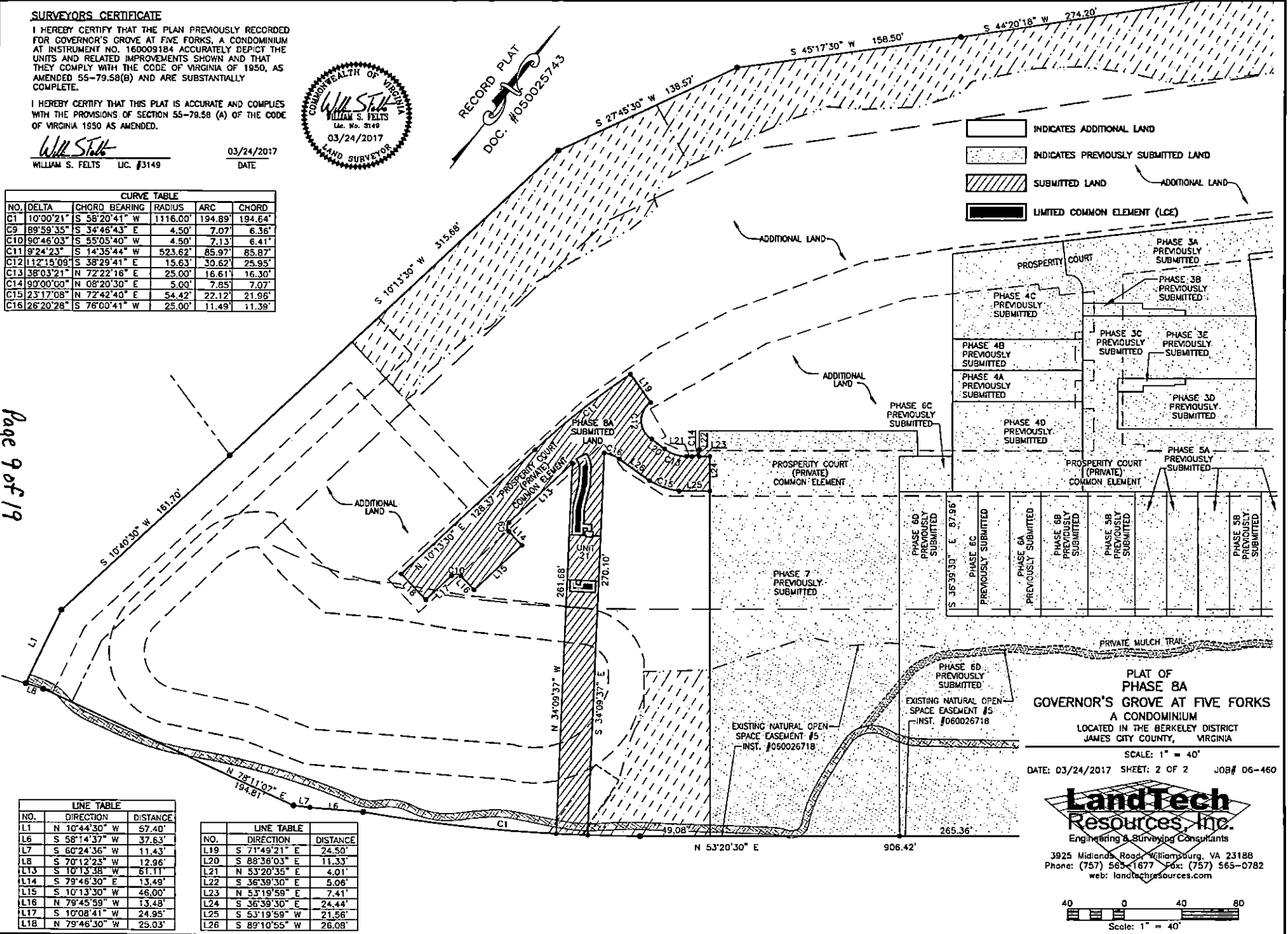
RECORD PLAT
DOC. #050023743

CURVE TABLE				
NO.	DELTA	CHORD BEARING	RADIUS	ARC CHORD
C1	10°00'21"	S 58°20'41" W	1116.00'	194.89' 194.64'
C9	89°59'35"	S 34°46'43" E	4.50'	7.07' 6.36'
C10	90°46'03"	S 55°05'40" W	4.50'	7.13' 6.41'
C11	9°24'23"	S 14°35'44" W	523.62'	85.97' 85.87'
C12	112°15'09"	S 38°29'41" E	15.63'	30.62' 25.95'
C13	38°03'21"	N 72°22'16" E	25.00'	16.61' 16.30'
C14	90°00'00"	N 08°20'30" E	5.00'	7.85' 7.07'
C15	23°17'08"	N 72°42'40" E	54.42'	22.12' 21.96'
C16	26°20'28"	S 76°00'41" W	25.00'	11.49' 11.39'

Page 9 of 19

LINE TABLE		
NO.	DIRECTION	DISTANCE
L1	N 10°44'30" W	57.40'
L6	S 58°14'37" W	37.63'
L7	S 60°24'36" W	11.43'
L8	S 70°12'23" W	12.96'
L13	S 10°13'38" W	61.11'
L14	S 79°46'30" E	13.49'
L15	S 10°13'30" W	46.00'
L16	N 79°45'59" W	13.48'
L17	S 10°08'41" W	24.95'
L18	N 79°46'30" W	25.03'

LINE TABLE		
NO.	DIRECTION	DISTANCE
L19	S 71°49'21" E	24.50'
L20	S 88°36'03" E	11.33'
L21	N 53°20'35" E	4.01'
L22	S 36°39'30" E	5.06'
L23	N 53°19'59" E	7.41'
L24	S 36°39'30" E	24.44'
L25	S 53°19'59" W	21.56'
L26	S 89°10'55" W	26.08'



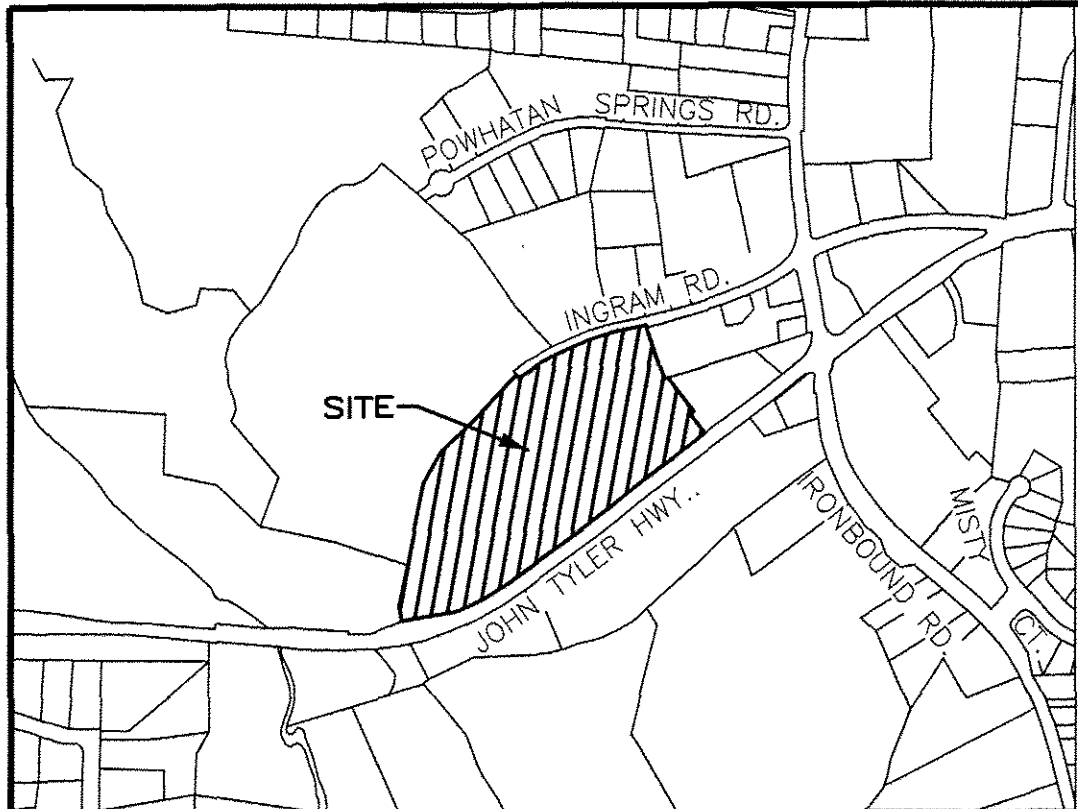
- INDICATES ADDITIONAL LAND
- INDICATES PREVIOUSLY SUBMITTED LAND
- SUBMITTED LAND
- LIMITED COMMON ELEMENT (LCE)

PLAT OF
PHASE 8A
GOVERNOR'S GROVE AT FIVE FORKS
A CONDOMINIUM
LOCATED IN THE BERKELEY DISTRICT
JAMES CITY COUNTY, VIRGINIA

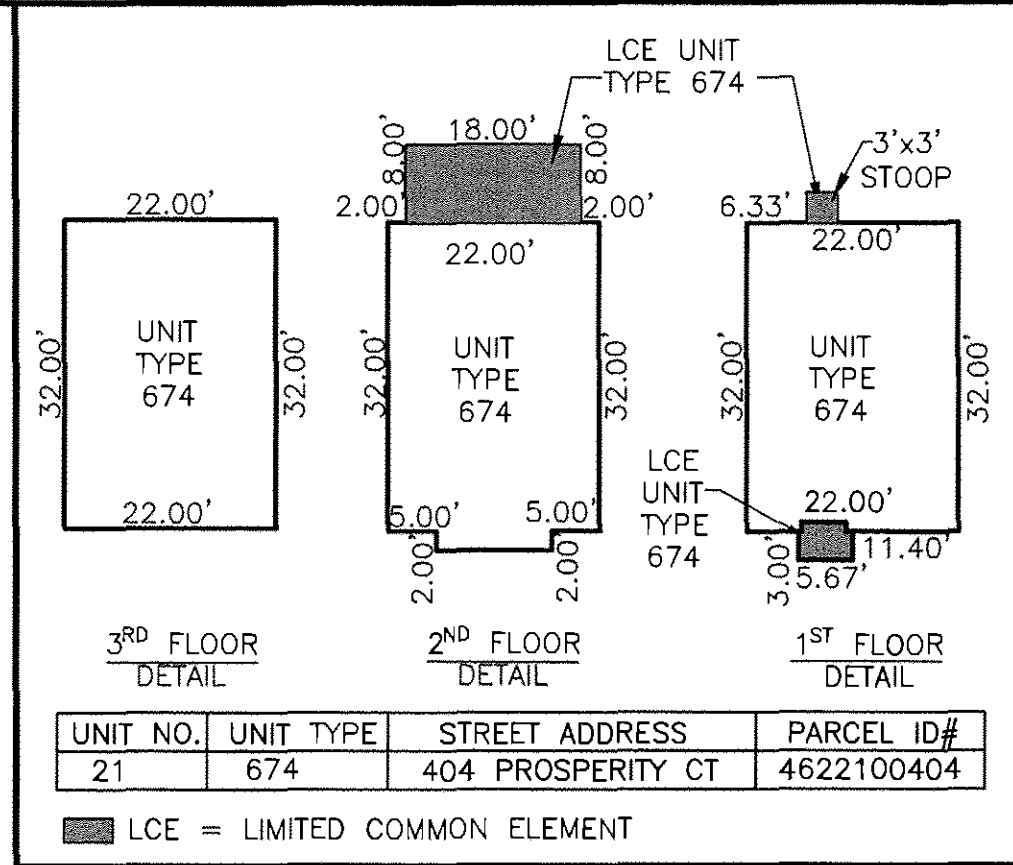
SCALE: 1" = 40'
DATE: 03/24/2017 SHEET: 2 OF 2 JOB# 06-460

LandTech Resources, Inc.
Engineering & Surveying Consultants
3925 Midlands Road, Williamsburg, VA 23188
Phone: (757) 565-1677 Fax: (757) 565-0782
web: landtechresources.com

170006747



VICINITY MAP - NOT TO SCALE



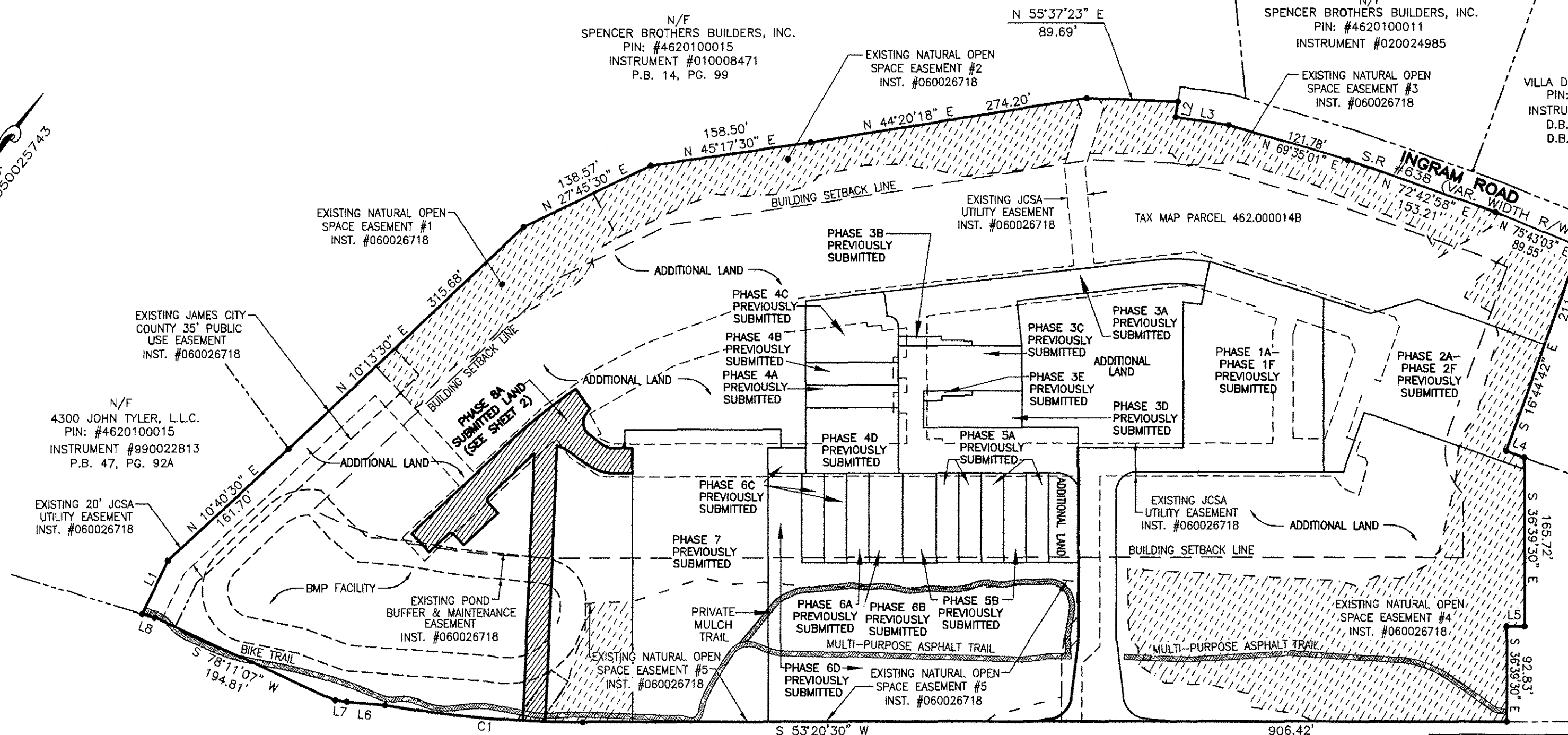
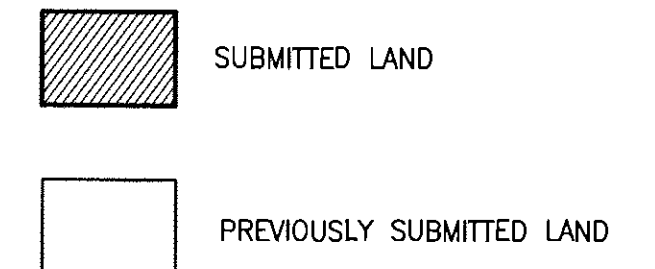
AREA TABLE

PARCEL	SQ. FT.	ACRES
PHASE 8A SUBMITTED LAND	14,152	0.325
PREVIOUSLY SUBMITTED LAND	218,595	5.018
ADDITIONAL LAND	420,489	9.653
TOTAL	653,236	14.996

PLAT OF
PHASE 8A
GOVERNOR'S GROVE AT FIVE FORKS
 A CONDOMINIUM
 LOCATED IN THE BERKELEY DISTRICT
 JAMES CITY COUNTY, VIRGINIA
 DATE: 03/24/2017 SCALE: 1" = 100' JOB# 06-460
 SHEET: 1 OF 2

LandTech Resources, Inc.
 Engineering & Surveying Consultants
 3925 Midlands Road, Williamsburg, VA 23188
 Phone: (757) 565-1677 Fax: (757) 565-0782
 web: landtechresources.com

JCC Subdivision Agent Approval Not Required



2 Large/Small Plat(s) Recorded
 herewith as # 170006747

City of Williamsburg & County of James City
 Circuit Court: This PLAT was recorded on
 3-30-2017
 at 9:27 AM P.M. PG. 1
 Document # 170006747
 MONA A. FOLEY, CLERK

GENERAL NOTES

- THIS PLAT WAS PRODUCED WITHOUT A TITLE REPORT AND MAY NOT REFLECT ALL MATTERS AFFECTING PROPERTY.
- THIS PROPERTY APPEARS TO FALL IN ZONE "X" AS SHOWN ON FLOOD INSURANCE RATE MAP 51095C0119D, DATED DECEMBER 16, 2015.
- ALL UNITS TO BE SERVED BY PUBLIC WATER AND SEWER.
- ALL LAND AND IMPROVEMENTS OUTSIDE OF BUILDINGS AND WITHIN PHASE LIMITS SHALL BE KNOWN AS COMMON ELEMENT EXCEPT FOR LIMITED COMMON ELEMENTS DESIGNATED ON PLAT AND BUILDING PLANS.
- THIS PARCEL OF LAND WAS CONVEYED TO GOVERNOR'S GROVE AT FIVE FORKS, L.L.C. BY DEED RECORDED IN INSTRUMENT #070006512.
- THE STREETS WITHIN THIS CONDOMINIUM SHALL BE KNOWN AS COMMON ELEMENT AND NOT A PUBLIC DEDICATED RIGHT-OF-WAY.
- PHASE 8A IS SUBMITTED LAND. THE REMAINING PROPERTY HAS BEEN PREVIOUSLY SUBMITTED OR IS ADDITIONAL LAND. ALL ADDITIONAL LAND AND ALL COMMON ELEMENTS ARE WITHDRAWABLE LAND.
- PROFFERED COVENANTS, RESTRICTIONS, AND CONDITIONS AFFECTING THIS PROPERTY HAVE BEEN RECORDED AS INST. #050019045.
- THE LOCATION OF THE PRIVATE MULCH TRAIL AND THE ASPHALT MULTI-PURPOSE TRAIL ARE APPROXIMATE ONLY AND SUBJECT TO CHANGE.

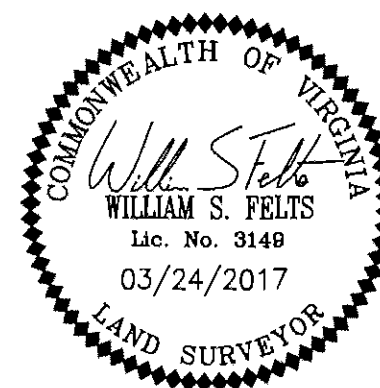
SURVEYORS CERTIFICATE

I HEREBY CERTIFY THAT THE PLAN PREVIOUSLY RECORDED FOR GOVERNOR'S GROVE AT FIVE FORKS, A CONDOMINIUM AT INSTRUMENT NO. 160009184 ACCURATELY DEPICT THE UNITS AND RELATED IMPROVEMENTS SHOWN AND THAT THEY COMPLY WITH THE CODE OF VIRGINIA OF 1950, AS AMENDED 55-79.58(B) AND ARE SUBSTANTIALLY COMPLETE.

I HEREBY CERTIFY THAT THIS PLAT IS ACCURATE AND COMPLIES WITH THE PROVISIONS OF SECTION 55-79.58 (A) OF THE CODE OF VIRGINIA 1950 AS AMENDED.

William S. Felts
 WILLIAM S. FELTS LIC. #3149

03/24/2017
 DATE



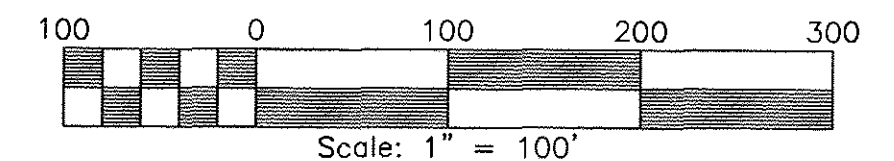
JOHN TYLER HIGHWAY
 STATE ROUTE #5
 (VARIABLE WIDTH PUBLIC R/W)

CURVE TABLE

NO.	DELTA	CHORD BEARING	RADIUS	ARC	CHORD
C1	10°00'21"	S 58°20'41" W	1116.00'	194.89'	194.64'

LINE TABLE

NO.	DIRECTION	DISTANCE
L1	N 10°44'30" W	57.40'
L2	S 27°48'08" E	15.00'
L3	N 62°11'52" E	52.25'
L4	N 73°15'18" E	18.75'
L5	S 53°20'30" W	17.63'
L6	S 58°14'37" W	37.63'
L7	S 60°24'36" W	11.43'
L8	S 70°12'23" W	12.96'



170006747

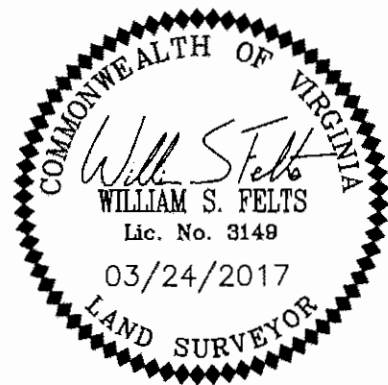
SURVEYORS CERTIFICATE

I HEREBY CERTIFY THAT THE PLAN PREVIOUSLY RECORDED FOR GOVERNOR'S GROVE AT FIVE FORKS, A CONDOMINIUM AT INSTRUMENT NO. 160009184 ACCURATELY DEPICT THE UNITS AND RELATED IMPROVEMENTS SHOWN AND THAT THEY COMPLY WITH THE CODE OF VIRGINIA OF 1950, AS AMENDED 55-79.58(B) AND ARE SUBSTANTIALLY COMPLETE.

I HEREBY CERTIFY THAT THIS PLAT IS ACCURATE AND COMPLIES WITH THE PROVISIONS OF SECTION 55-79.58 (A) OF THE CODE OF VIRGINIA 1950 AS AMENDED.

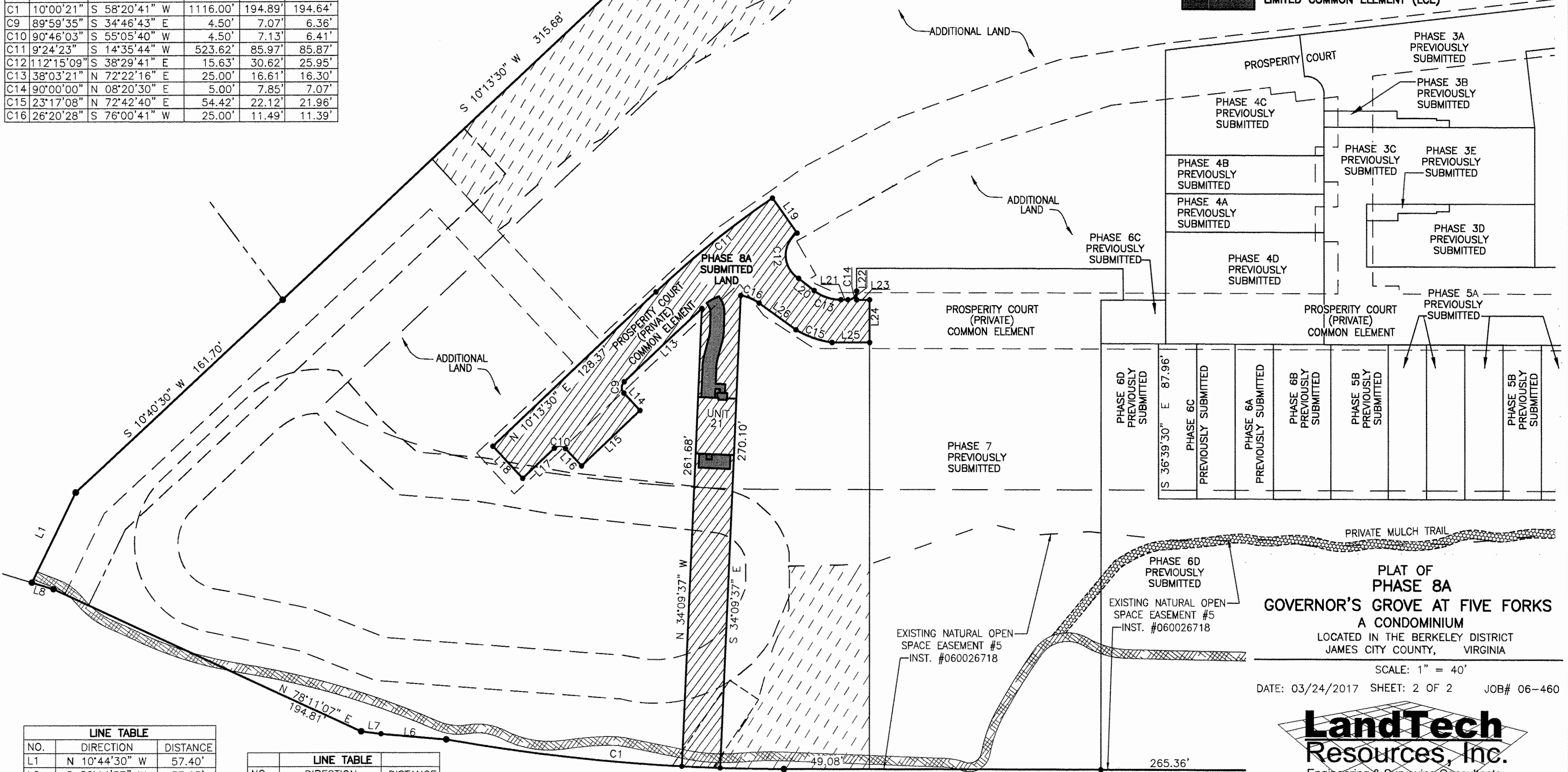
William S. Felts
WILLIAM S. FELTS LIC. #3149

03/24/2017
DATE



CURVE TABLE					
NO.	DELTA	CHORD BEARING	RADIUS	ARC	CHORD
C1	10°00'21"	S 58°20'41" W	1116.00'	194.89'	194.64'
C9	89°59'35"	S 34°46'43" E	4.50'	7.07'	6.36'
C10	90°46'03"	S 55°05'40" W	4.50'	7.13'	6.41'
C11	9°24'23"	S 14°35'44" W	523.62'	85.97'	85.87'
C12	112°15'09"	S 38°29'41" E	15.63'	30.62'	25.95'
C13	38°03'21"	N 72°22'16" E	25.00'	16.61'	16.30'
C14	90°00'00"	N 08°20'30" E	5.00'	7.85'	7.07'
C15	23°17'08"	N 72°42'40" E	54.42'	22.12'	21.96'
C16	26°20'28"	S 76°00'41" W	25.00'	11.49'	11.39'

- INDICATES ADDITIONAL LAND
- INDICATES PREVIOUSLY SUBMITTED LAND
- SUBMITTED LAND
- LIMITED COMMON ELEMENT (LCE)



LINE TABLE		
NO.	DIRECTION	DISTANCE
L1	N 10°44'30" W	57.40'
L6	S 58°14'37" W	37.63'
L7	S 60°24'36" W	11.43'
L8	S 70°12'23" W	12.96'
L13	S 10°13'38" W	61.11'
L14	S 79°46'30" E	13.49'
L15	S 10°13'30" W	46.00'
L16	N 79°45'59" W	13.48'
L17	S 10°08'41" W	24.95'
L18	N 79°46'30" W	25.03'

LINE TABLE		
NO.	DIRECTION	DISTANCE
L19	S 71°49'21" E	24.50'
L20	S 88°36'03" E	11.33'
L21	N 53°20'35" E	4.01'
L22	S 36°39'30" E	5.06'
L23	N 53°19'59" E	7.41'
L24	S 36°39'30" E	24.44'
L25	S 53°19'59" W	21.56'
L26	S 89°10'55" W	26.08'

2 Large Small Plat(s) Recorded herewith as # 170006747

City of Williamsburg & County of James City
Circuit Court: This PLAT was recorded on
3-30-2017
at 9:27 AM, PG
Document # 170006747
MONA A. FOLEY, CLERK
Mona Foley, Clerk

PLAT OF PHASE 8A
GOVERNOR'S GROVE AT FIVE FORKS
A CONDOMINIUM
LOCATED IN THE BERKELEY DISTRICT
JAMES CITY COUNTY, VIRGINIA

SCALE: 1" = 40'
DATE: 03/24/2017 SHEET: 2 OF 2 JOB# 06-460



3925 Midlands Road, Williamsburg, VA 23188
Phone: (757) 565-1677 Fax: (757) 565-0782
web: landtechresources.com

JCC Subdivision Agent Approval Not Required *EC*

