

170006747

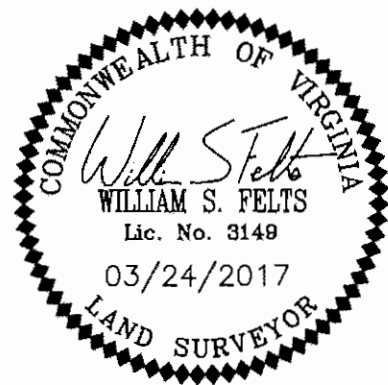
SURVEYORS CERTIFICATE

I HEREBY CERTIFY THAT THE PLAN PREVIOUSLY RECORDED FOR GOVERNOR'S GROVE AT FIVE FORKS, A CONDOMINIUM AT INSTRUMENT NO. 160009184 ACCURATELY DEPICT THE UNITS AND RELATED IMPROVEMENTS SHOWN AND THAT THEY COMPLY WITH THE CODE OF VIRGINIA OF 1950, AS AMENDED 55-79.58(B) AND ARE SUBSTANTIALLY COMPLETE.

I HEREBY CERTIFY THAT THIS PLAT IS ACCURATE AND COMPLIES WITH THE PROVISIONS OF SECTION 55-79.58 (A) OF THE CODE OF VIRGINIA 1950 AS AMENDED.

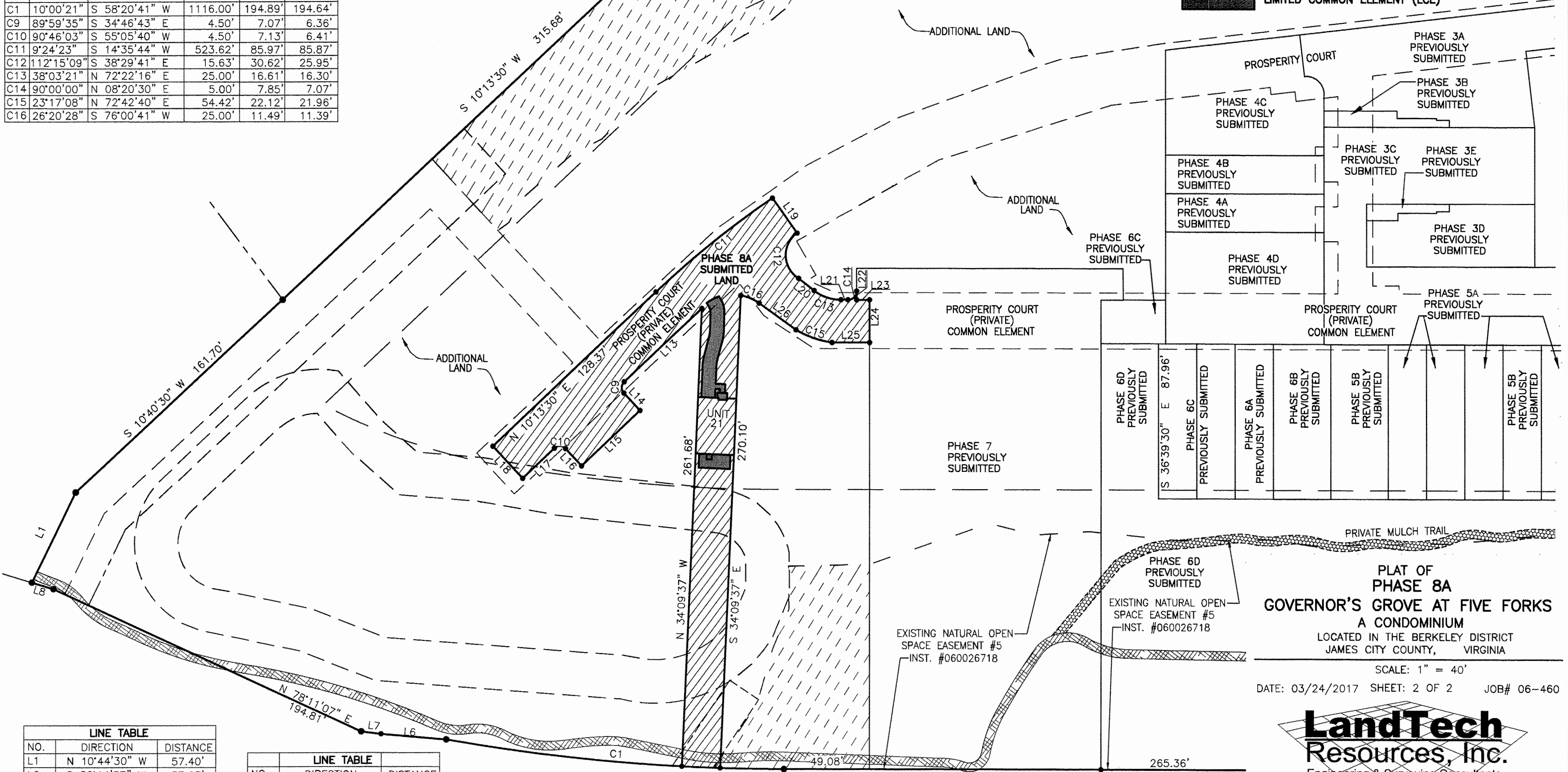
William S. Felts
WILLIAM S. FELTS LIC. #3149

03/24/2017
DATE



CURVE TABLE					
NO.	DELTA	CHORD BEARING	RADIUS	ARC	CHORD
C1	10°00'21"	S 58°20'41" W	1116.00'	194.89'	194.64'
C9	89°59'35"	S 34°46'43" E	4.50'	7.07'	6.36'
C10	90°46'03"	S 55°05'40" W	4.50'	7.13'	6.41'
C11	9°24'23"	S 14°35'44" W	523.62'	85.97'	85.87'
C12	112°15'09"	S 38°29'41" E	15.63'	30.62'	25.95'
C13	38°03'21"	N 72°22'16" E	25.00'	16.61'	16.30'
C14	90°00'00"	N 08°20'30" E	5.00'	7.85'	7.07'
C15	23°17'08"	N 72°42'40" E	54.42'	22.12'	21.96'
C16	26°20'28"	S 76°00'41" W	25.00'	11.49'	11.39'

- INDICATES ADDITIONAL LAND
- INDICATES PREVIOUSLY SUBMITTED LAND
- SUBMITTED LAND
- LIMITED COMMON ELEMENT (LCE)



LINE TABLE		
NO.	DIRECTION	DISTANCE
L1	N 10°44'30" W	57.40'
L6	S 58°14'37" W	37.63'
L7	S 60°24'36" W	11.43'
L8	S 70°12'23" W	12.96'
L13	S 10°13'38" W	61.11'
L14	S 79°46'30" E	13.49'
L15	S 10°13'30" W	46.00'
L16	N 79°45'59" W	13.48'
L17	S 10°08'41" W	24.95'
L18	N 79°46'30" W	25.03'

LINE TABLE		
NO.	DIRECTION	DISTANCE
L19	S 71°49'21" E	24.50'
L20	S 88°36'03" E	11.33'
L21	N 53°20'35" E	4.01'
L22	S 36°39'30" E	5.06'
L23	N 53°19'59" E	7.41'
L24	S 36°39'30" E	24.44'
L25	S 53°19'59" W	21.56'
L26	S 89°10'55" W	26.08'

2 Large Small Plat(s) Recorded herewith as # 170006747

City of Williamsburg & County of James City
Circuit Court: This PLAT was recorded on
3-30-2017
at 9:27 AM, PB PG
Document # 170006747
MONA A. FOLEY, CLERK
Mona Foley, Clerk

PLAT OF PHASE 8A
GOVERNOR'S GROVE AT FIVE FORKS
A CONDOMINIUM
LOCATED IN THE BERKELEY DISTRICT
JAMES CITY COUNTY, VIRGINIA

SCALE: 1" = 40'
DATE: 03/24/2017 SHEET: 2 OF 2 JOB# 06-460



3925 Midlands Road, Williamsburg, VA 23188
Phone: (757) 565-1677 Fax: (757) 565-0782
web: landtechresources.com

JCC Subdivision Agent Approval Not Required *EC*

