

170006746

SURVEYORS CERTIFICATE

I HEREBY CERTIFY THAT THE PLAN PREVIOUSLY RECORDED FOR GOVERNOR'S GROVE AT FIVE FORKS, A CONDOMINIUM AT INSTRUMENT NO. 160009184 ACCURATELY DEPICT THE UNITS AND RELATED IMPROVEMENTS SHOWN AND THAT THEY COMPLY WITH THE CODE OF VIRGINIA OF 1950, AS AMENDED 55-79.58(B) AND ARE SUBSTANTIALLY COMPLETE.

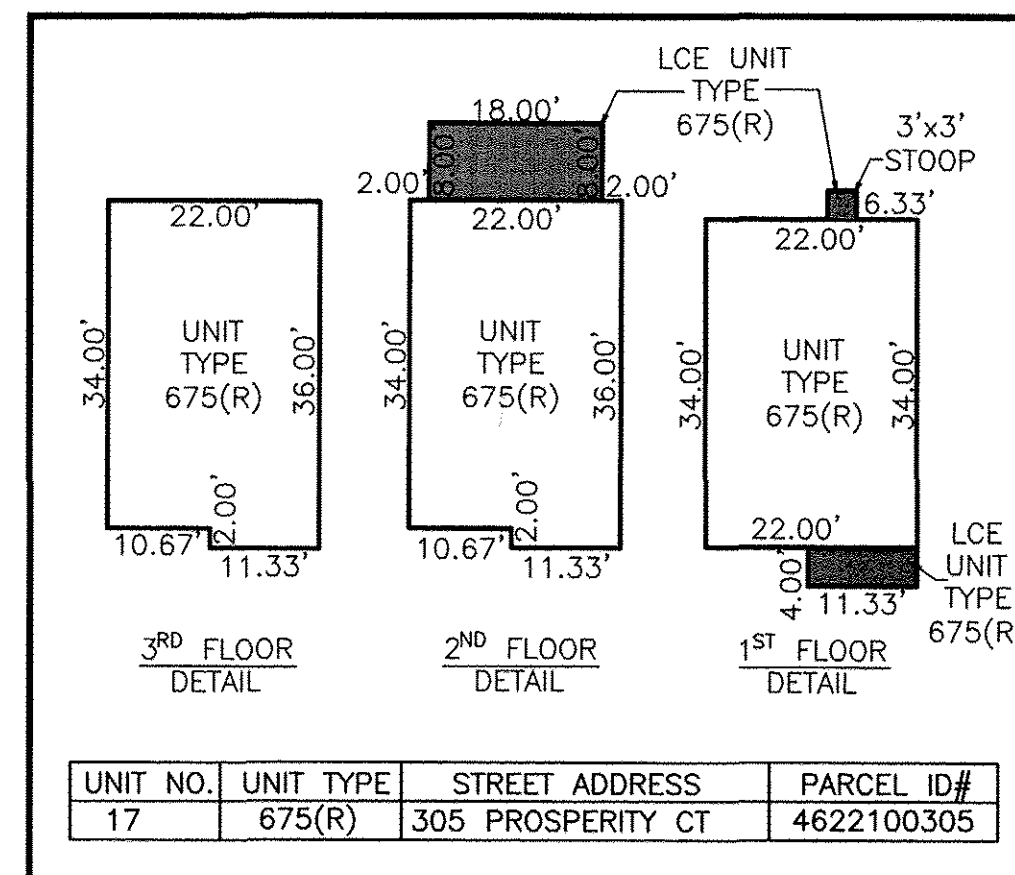
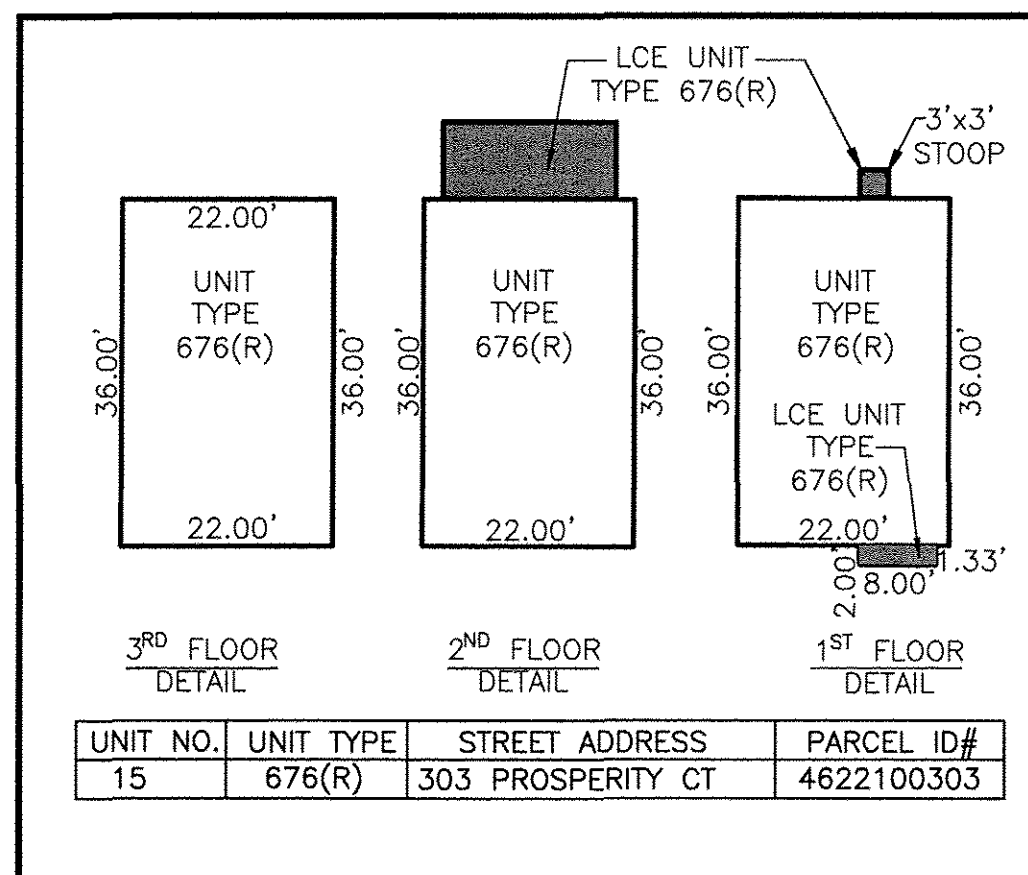
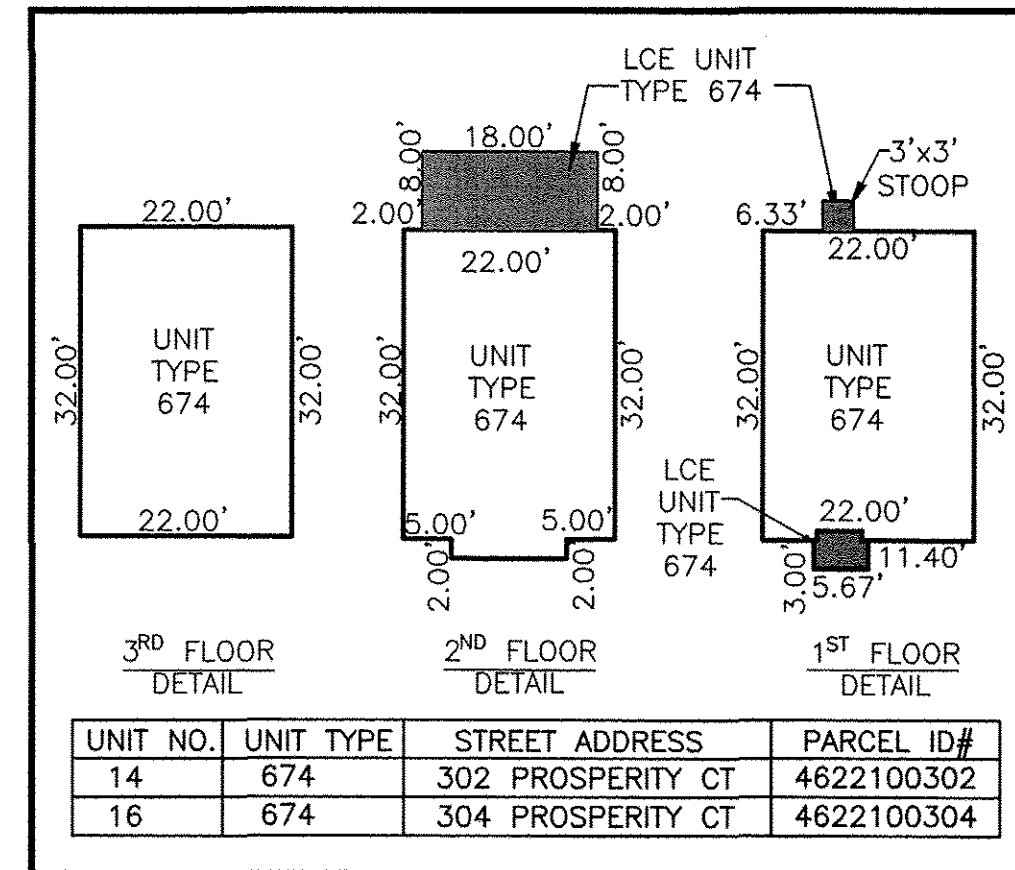
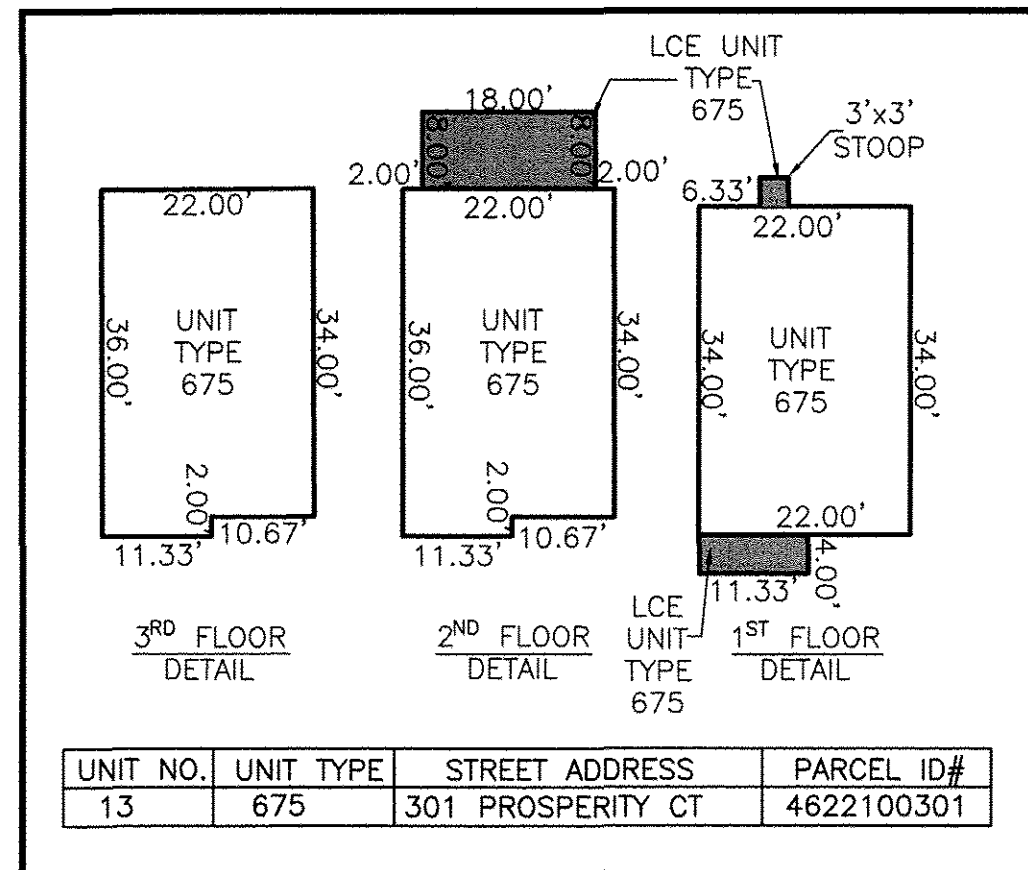
I HEREBY CERTIFY THAT THIS PLAT IS ACCURATE AND COMPLIES WITH THE PROVISIONS OF SECTION 55-79.58 (A) OF THE CODE OF VIRGINIA 1950 AS AMENDED.



William S. Felts

WILLIAM S. FELTS LIC. #3149

03/23/2017
DATE



3 Large/Small Plat(s) Recorded
herewith as # 170006746

City of Williamsburg & County of James City
Circuit Court: This PLAT was recorded on
3-30-2017
at 9:24 AM PM, PB PG
Document # 170006746
MONA A. FOLEY, CLERK
Mona A. Foley, Clerk

PLAT OF
PHASE 7
GOVERNOR'S GROVE AT FIVE FORKS
A CONDOMINIUM
LOCATED IN THE BERKELEY DISTRICT
JAMES CITY COUNTY, VIRGINIA

SCALE: 1" = 40'
DATE: 03/23/2017 SHEET: 3 OF 3 JOB# 06-460



Engineering & Surveying Consultants
3925 Midlands Road, Williamsburg, VA 23188
Phone: (757) 565-1677 Fax: (757) 565-0782
web: landtechresources.com

JCC Subdivision Agent
Approval Not Required *EC*

