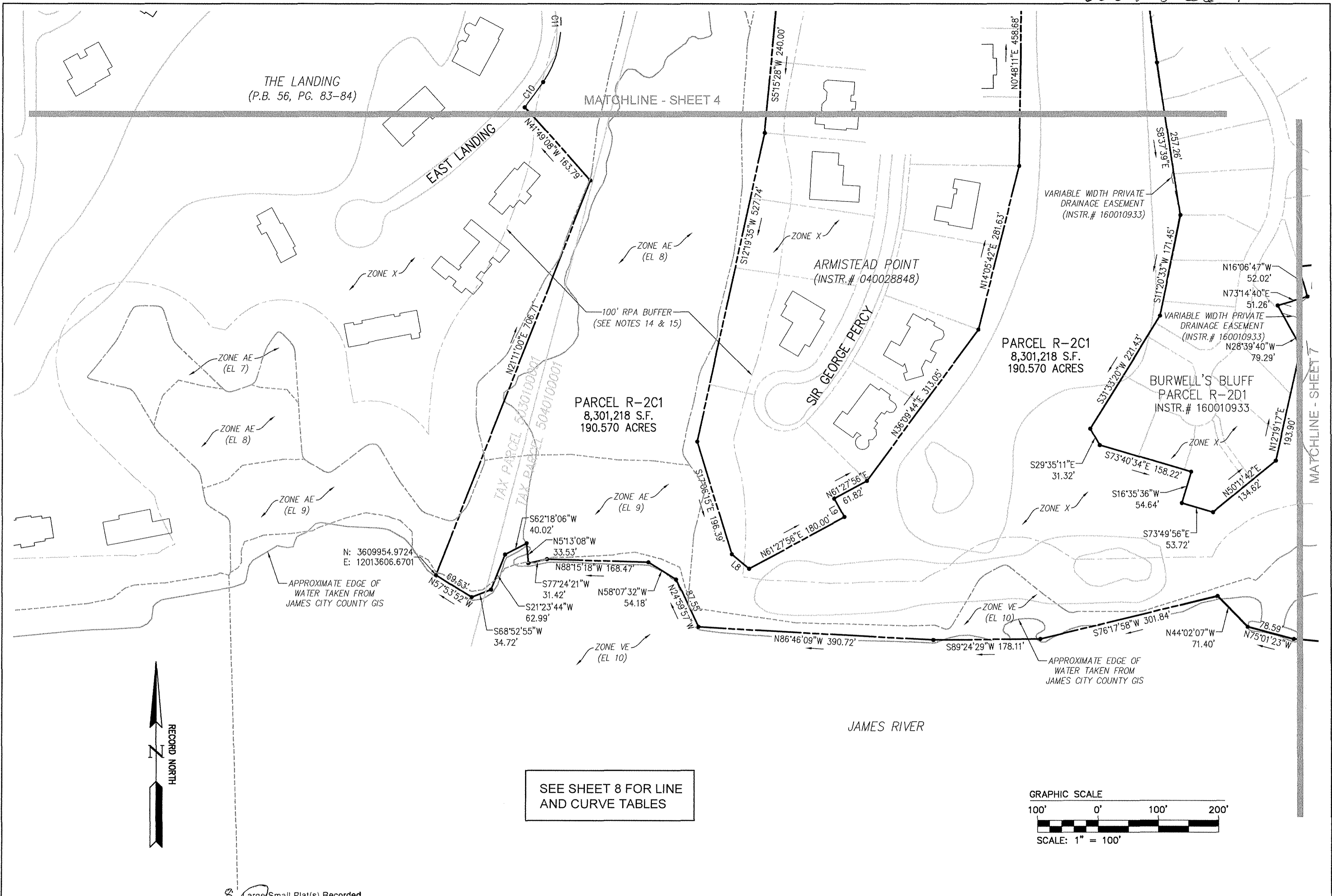
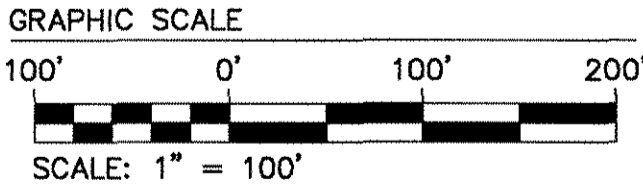


160022664



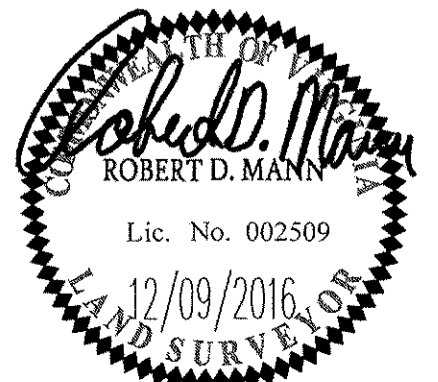
SEE SHEET 8 FOR LINE AND CURVE TABLES



Small Plat(s) Recorded herewith as # 160022664

City of Williamsburg & County of James City
Circuit Court: This PLAT was recorded on 12-19-2016
at 3:43 AM/PM, PG. 1
Document # 160022664
MONA A. FOLEY, CLERK
Mona A. Foley, Clerk

Rev.	Date	Description	Revised By



JCC Subdivision Agent Approval Not Required

AES
CONSULTING ENGINEERS
Hampton Roads | Central Virginia | Middle Peninsula

816 Greenbrier Circle, Suite F
Chesapeake, Virginia 23320
Phone: (757) 410-7436
www.aesva.com

PLAT OF BOUNDARY
PARCEL R-2C1
KINGSMILL RESORT
PROPERTY OF
XANTERRA KINGSMILL, LLC
ROBERTS DISTRICT COUNTY OF JAMES CITY VIRGINIA

Project Contacts:	RDM
Project Number:	7753-46
Scale:	1"=100'
Date:	12/09/2016
Sheet Number	6