

160021929

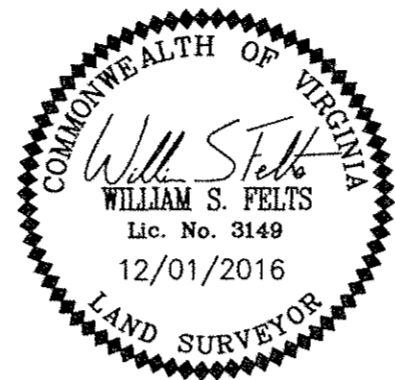
SURVEYORS CERTIFICATE

I HEREBY CERTIFY THAT THE PLAN PREVIOUSLY RECORDED FOR GOVERNOR'S GROVE AT FIVE FORKS, A CONDOMINIUM AT INSTRUMENT NO. 160009184 ACCURATELY DEPICT THE UNITS AND RELATED IMPROVEMENTS SHOWN AND THAT THEY COMPLY WITH THE CODE OF VIRGINIA OF 1950, AS AMENDED 55-79.58(B) AND ARE SUBSTANTIALLY COMPLETE.

I HEREBY CERTIFY THAT THIS PLAT IS ACCURATE AND COMPLIES WITH THE PROVISIONS OF SECTION 55-79.58 (A) OF THE CODE OF VIRGINIA 1950 AS AMENDED.

William S. Felts
WILLIAM S. FELTS LIC. #3149

12/01/16
DATE



AREA TABLE		
PARCEL	SQ. FT.	ACRES
PHASE 6D SUBMITTED LAND	49,526	1.137
PREVIOUSLY SUBMITTED LAND	130,684	3.000
ADDITIONAL LAND	473,026	10.859
TOTAL	653,236	14.996

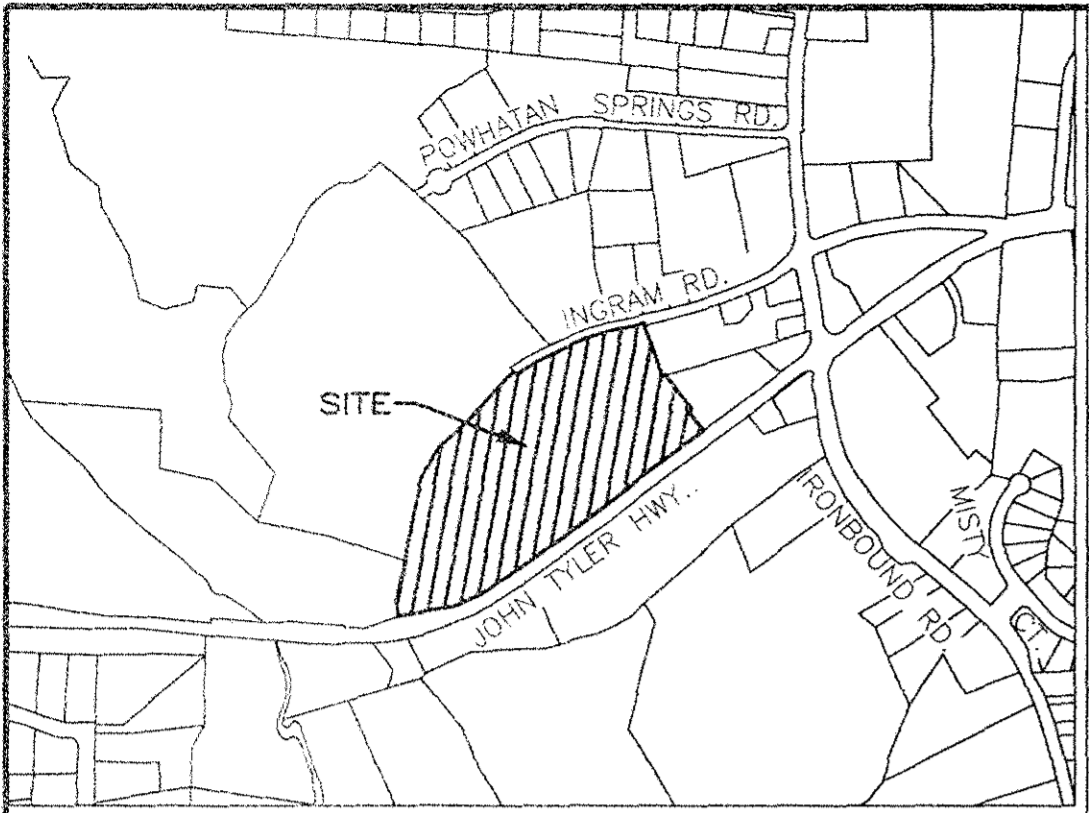
PLAT OF
PHASE 6D
GOVERNOR'S GROVE AT FIVE FORKS
A CONDOMINIUM

LOCATED IN THE BERKELEY DISTRICT
JAMES CITY COUNTY, VIRGINIA

DATE: 12/01/2016 SCALE: 1" = 100' JOB# 06-460
SHEET: 1 OF 2

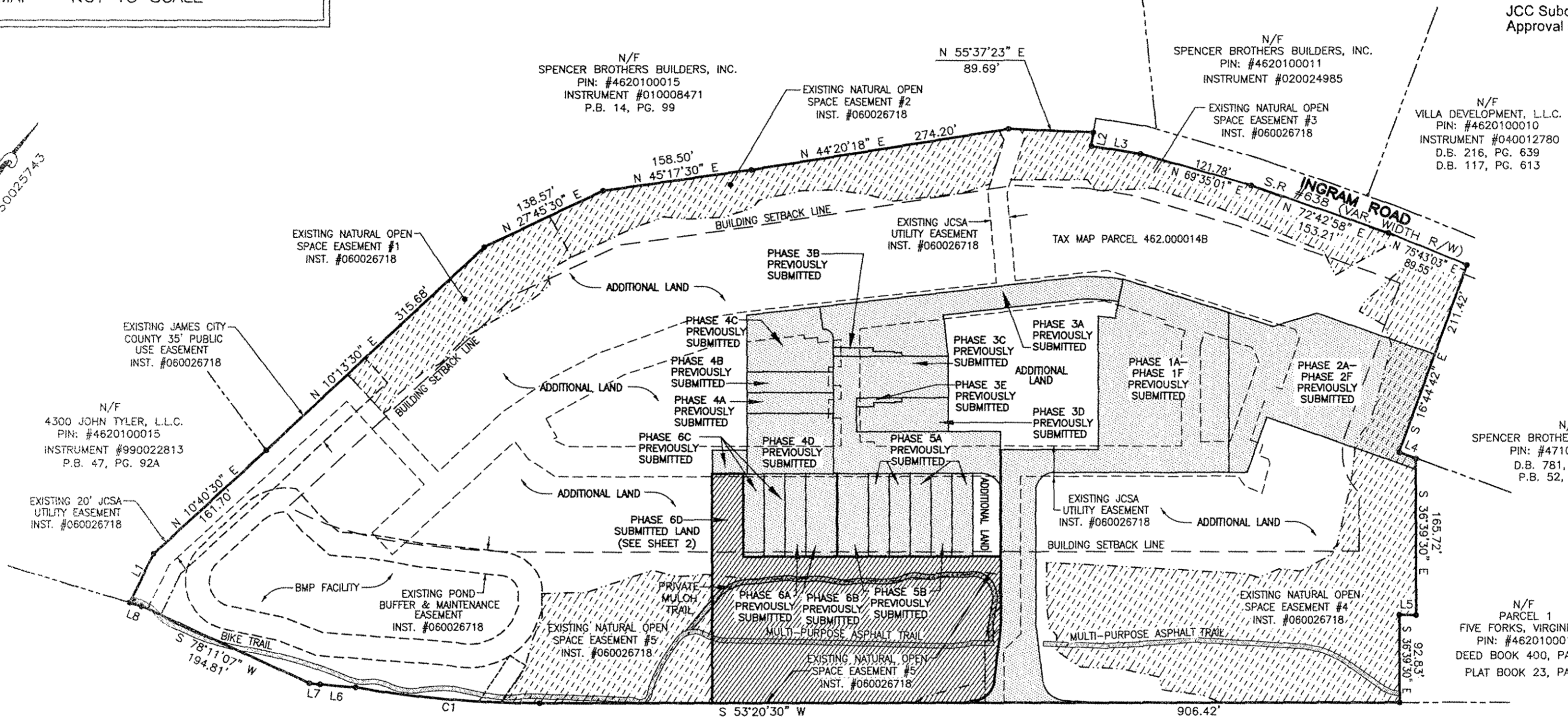
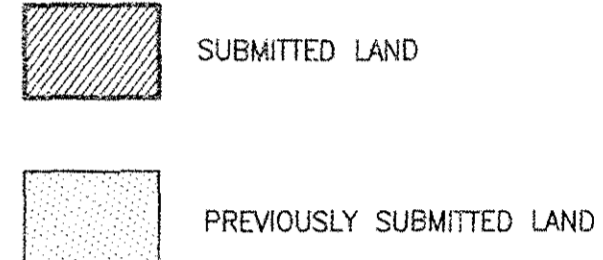


Engineering & Surveying Consultants
3925 Midlands Road, Williamsburg, VA 23188
Phone: (757) 565-1677 Fax: (757) 565-0782
web: landtechresources.com



VICINITY MAP - NOT TO SCALE

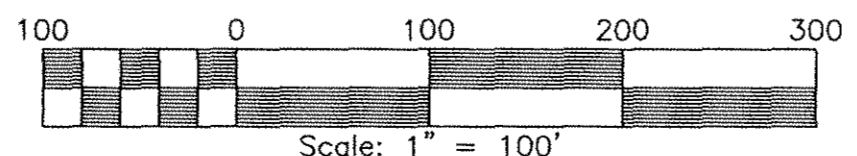
JCC Subdivision Agent *EC*
Approval Not Required



JOHN TYLER HIGHWAY
STATE ROUTE #5
(VARIABLE WIDTH PUBLIC R/W)

GENERAL NOTES

- THIS PLAT WAS PRODUCED WITHOUT A TITLE REPORT AND MAY NOT REFLECT ALL MATTERS AFFECTING PROPERTY.
- THIS PROPERTY APPEARS TO FALL IN ZONE "X" AS SHOWN ON FLOOD INSURANCE RATE MAP 51095C0119D, DATED DECEMBER 16, 2015.
- ALL UNITS TO BE SERVED BY PUBLIC WATER AND SEWER.
- ALL LAND AND IMPROVEMENTS OUTSIDE OF BUILDINGS AND WITHIN PHASE LIMITS SHALL BE KNOWN AS COMMON ELEMENT EXCEPT FOR LIMITED COMMON ELEMENTS DESIGNATED ON PLAT AND BUILDING PLANS.
- THIS PARCEL OF LAND WAS CONVEYED TO GOVERNOR'S GROVE AT FIVE FORKS, L.L.C. BY DEED RECORDED IN INSTRUMENT #070006512.
- THE STREETS WITHIN THIS CONDOMINIUM SHALL BE KNOWN AS COMMON ELEMENT AND NOT A PUBLIC DEDICATED RIGHT-OF-WAY.
- PHASE 6D IS SUBMITTED LAND. THE REMAINING PROPERTY HAS BEEN PREVIOUSLY SUBMITTED OR ADDITIONAL LAND. ALL ADDITIONAL LAND AND ALL COMMON ELEMENTS ARE WITHDRAWABLE LAND.
- PROFFERED COVENANTS, RESTRICTIONS, AND CONDITIONS AFFECTING THIS PROPERTY HAVE BEEN RECORDED AS INST. #050019045.
- THE LOCATION OF THE PRIVATE MULCH TRAIL AND THE ASPHALT MULTI-PURPOSE TRAIL ARE APPROXIMATE ONLY AND SUBJECT TO CHANGE.



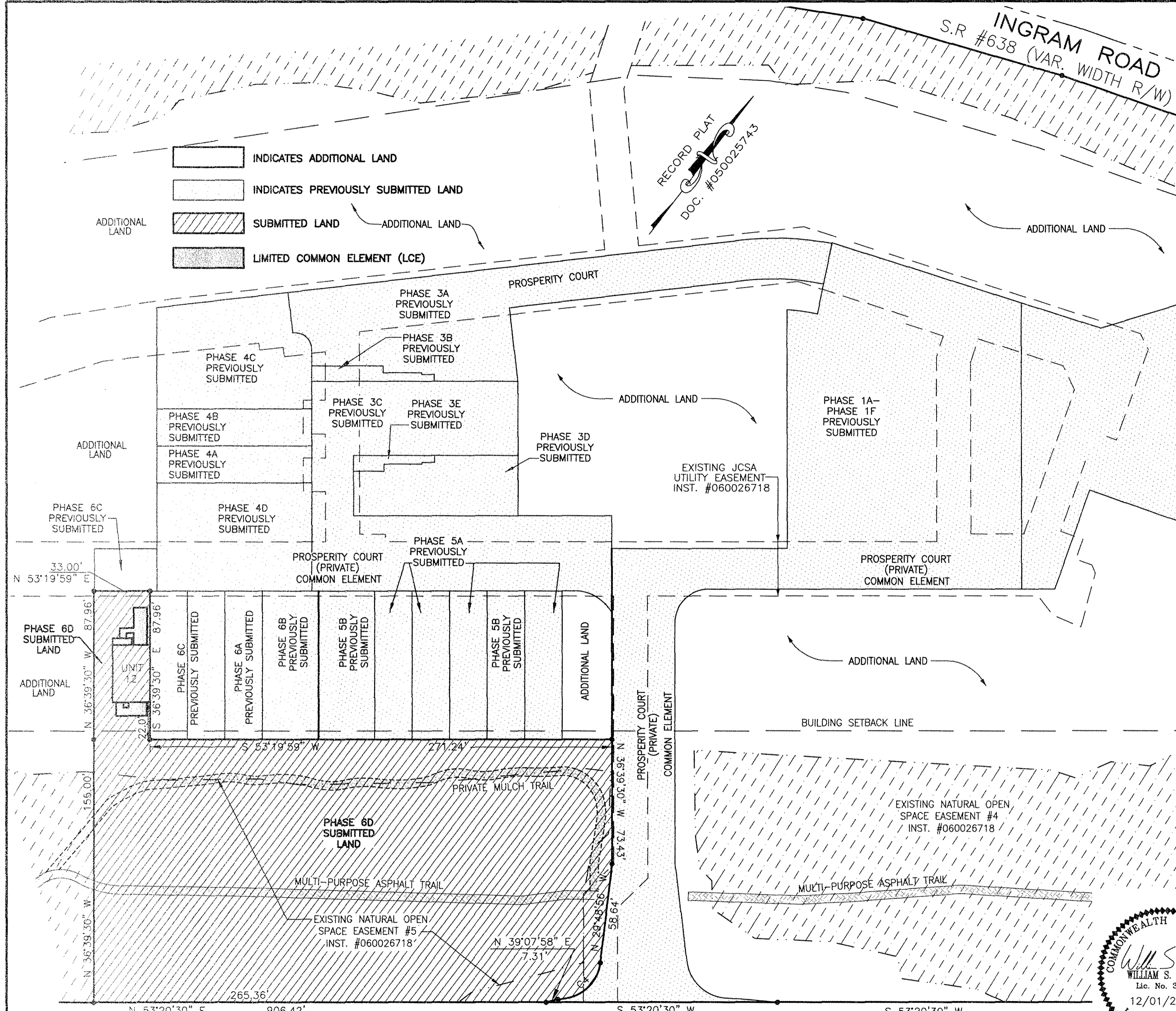
CURVE TABLE					
NO.	DELTA	CHORD BEARING	RADIUS	ARC	CHORD
C1	10°00'21"	S 58°20'41" W	1116.00'	194.89'	194.64'

LINE TABLE		
NO.	DIRECTION	DISTANCE
L1	N 10°44'30" W	57.40'
L2	S 27°48'08" E	15.00'
L3	N 62°11'52" E	52.25'
L4	N 73°15'18" E	18.75'
L5	S 53°20'30" W	17.63'
L6	S 58°14'37" W	37.63'
L7	S 60°24'36" W	11.43'
L8	S 70°12'23" W	12.96'

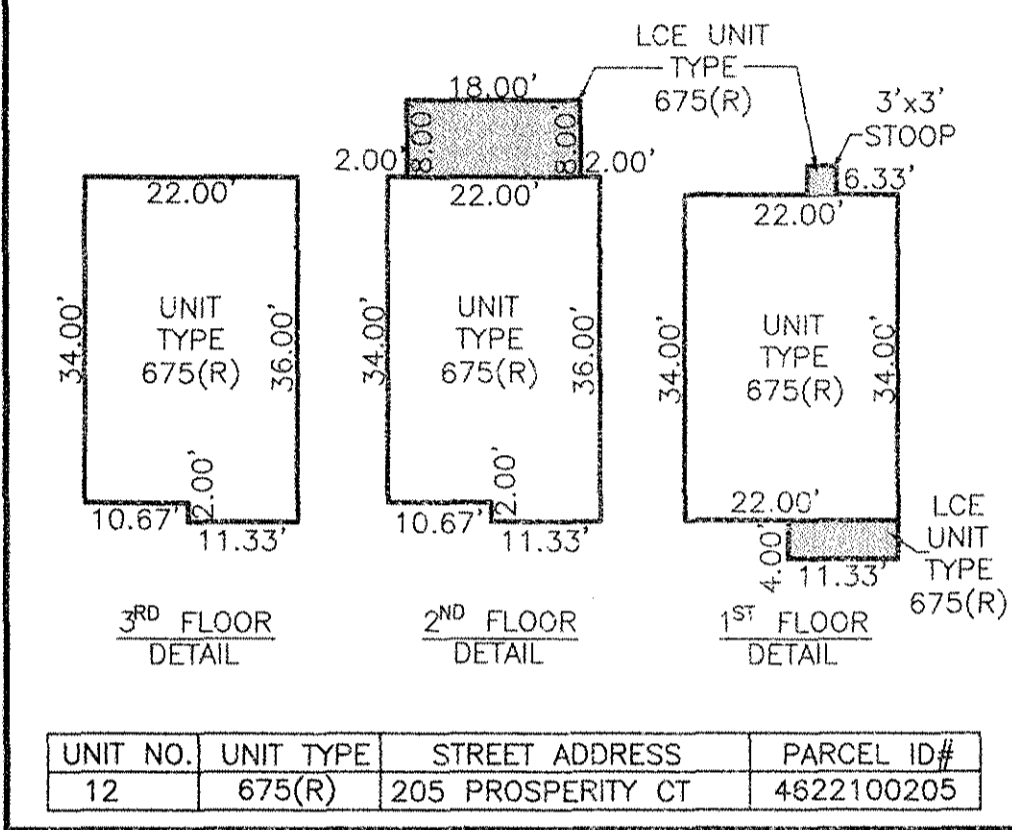
2 Large Small Plat(s) Recorded
herewith as # 160021929

City of Williamsburg & County of James City
Circuit Court: This PLAT was recorded on
DECEMBER 7, 2016
at 3:23 AM (PM) PG 1
Document # 160021929
MONA A. FOLEY, CLERK
Mona A. Foley, Clerk

160021929



- INDICATES ADDITIONAL LAND
- INDICATES PREVIOUSLY SUBMITTED LAND
- SUBMITTED LAND
- LIMITED COMMON ELEMENT (LCE)



SURVEYORS CERTIFICATE

I HEREBY CERTIFY THAT THE PLAN PREVIOUSLY RECORDED FOR GOVERNOR'S GROVE AT FIVE FORKS, A CONDOMINIUM AT INSTRUMENT NO. 160009184 ACCURATELY DEPICT THE UNITS AND RELATED IMPROVEMENTS SHOWN AND THAT THEY COMPLY WITH THE CODE OF VIRGINIA OF 1950, AS AMENDED 55-79.58(B) AND ARE SUBSTANTIALLY COMPLETE.

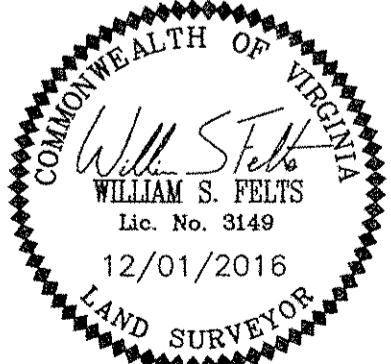
I HEREBY CERTIFY THAT THIS PLAT IS ACCURATE AND COMPLIES WITH THE PROVISIONS OF SECTION 55-79.58 (A) OF THE CODE OF VIRGINIA 1950 AS AMENDED.

William S. Felts 12/01/16
 WILLIAM S. FELTS LIC. #3149 DATE

JCC Subdivision Agent
 Approval Not Required

**PLAT OF
 PHASE 6D
 GOVERNOR'S GROVE AT FIVE FORKS
 A CONDOMINIUM**
 LOCATED IN THE BERKELEY DISTRICT
 JAMES CITY COUNTY, VIRGINIA

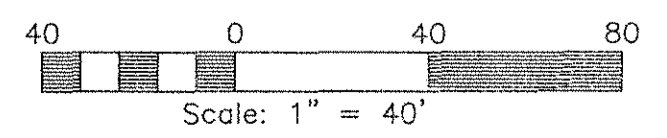
SCALE: 1" = 40'
 DATE: 12/01/2016 SHEET: 2 OF 2 JOB# 06-460



City of Williamsburg & County of James City
 Circuit Court: This PLAT was recorded on
DECEMBER 7, 2016
 at 3:23 AM PM, PB PG
 Document # 160021929
 MONA A. FOLEY, CLERK
Monica Foley Clerk

**JOHN TYLER HIGHWAY
 STATE ROUTE #5
 (VARIABLE WIDTH PUBLIC R/W)**

CURVE TABLE					
CURVE	RADIUS	LENGTH	CHORD	CHORD BEARING	DELTA
C4	24.50'	36.06'	32.89'	N 12°20'41" E	84°19'13"



2 Large/Small Plat(s) Recorded
 refer to as # 160021929