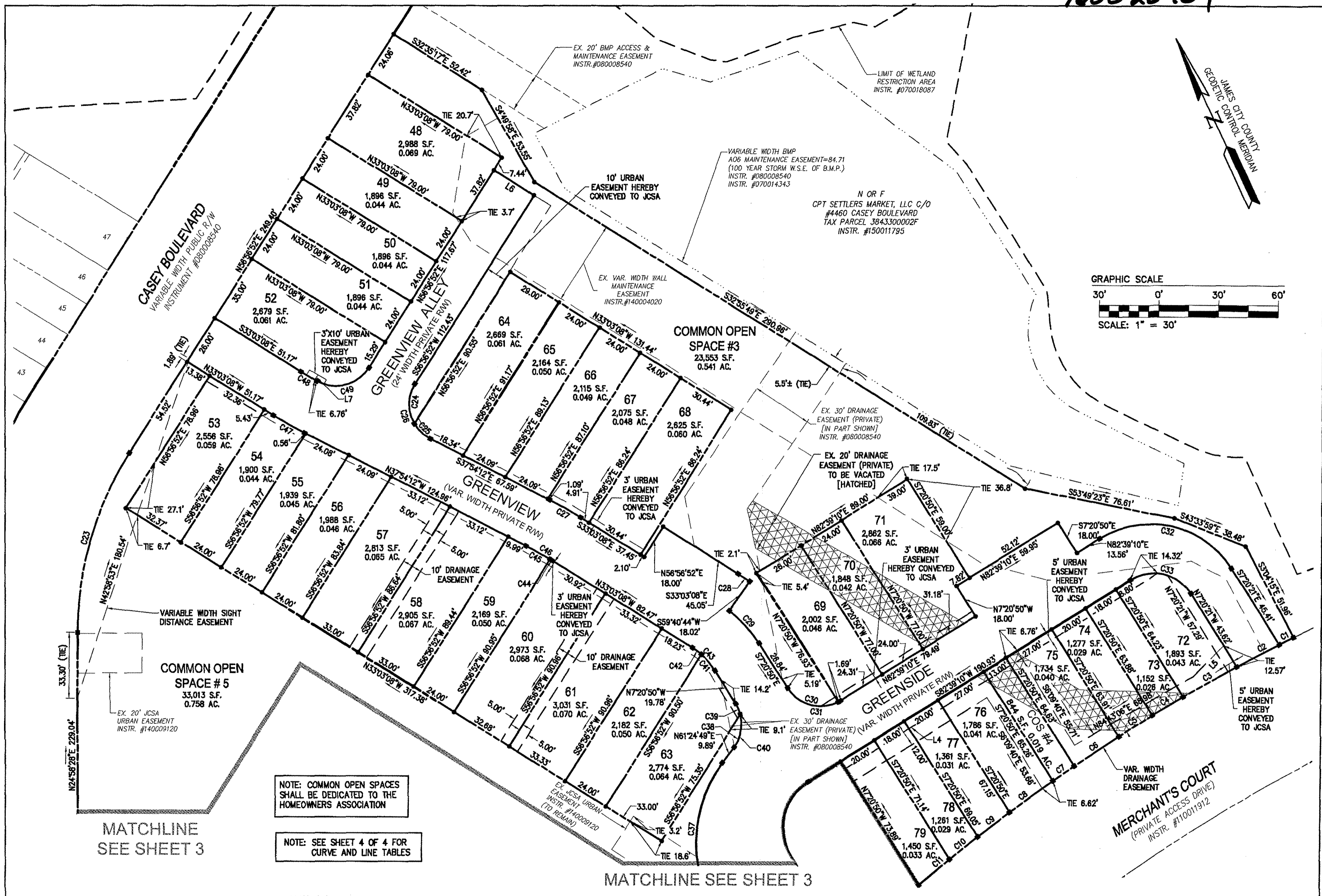


160020704

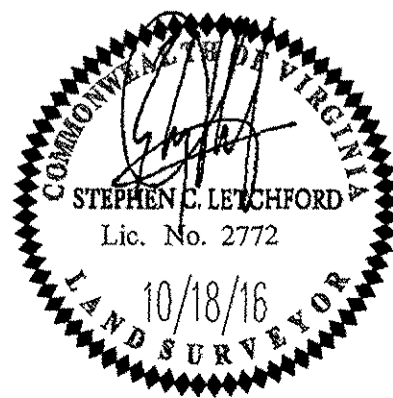


NOTE: COMMON OPEN SPACES SHALL BE DEDICATED TO THE HOMEOWNERS ASSOCIATION

NOTE: SEE SHEET 4 OF 4 FOR CURVE AND LINE TABLES

4	Large/Small Plat(s) Recorded	herewith as 160020704
1	10/05/16	REVISED PER COUNTY COMMENTS
Rev.	Date	Description
		LBA Revised By

City of Williamsburg & County of James City Circuit Court: This PLAT was recorded on 11-15-2016 at 8:54 AM/PM: PG Document # 160020704 MONA A. FOLEY, CLERK



**AES**  
CONSULTING ENGINEERS  
5248 Olde Towne Road, Suite 1  
Williamsburg, Virginia 23188  
Phone: (757) 253-0040  
Fax: (757) 220-8994  
www.aesva.com

PLAT OF SUBDIVISION  
NEWTOWN, SECTION 9, PARCEL 2E, LOT 1  
VILLAGE WALK AT NEW TOWN  
PHASE II  
LOTS 48-98, COS #3, COS #4 AND COS #5  
JAMESTOWN DISTRICT JAMES CITY COUNTY VIRGINIA

Project Contacts:	JAG/SCL
Project Number:	6632-S9-10
Scale:	1"=30'
Date:	8/12/16
Sheet Number	2 of 4