

Exhibit C - Phase I Improvements

Page 1 of 3

DATE	DESCRIPTION

OFFSITE SEWER PLAN AND PROFILE

C10.0

**LAND BAY 3
STONEHOUSE**
JAMES CITY COUNTY, VA

GS STONEHOUSE GREENLAND SUB, LLC
401 WESTCHASE BLVD, SUITE 117
FALLS CHURCH, VA 22045



WSP - SELLS
Transportation & Infrastructure

15401 Watson Parkway, Suite 100 • Cary, NC 27513 • 919.678.0215
www.wspells.com

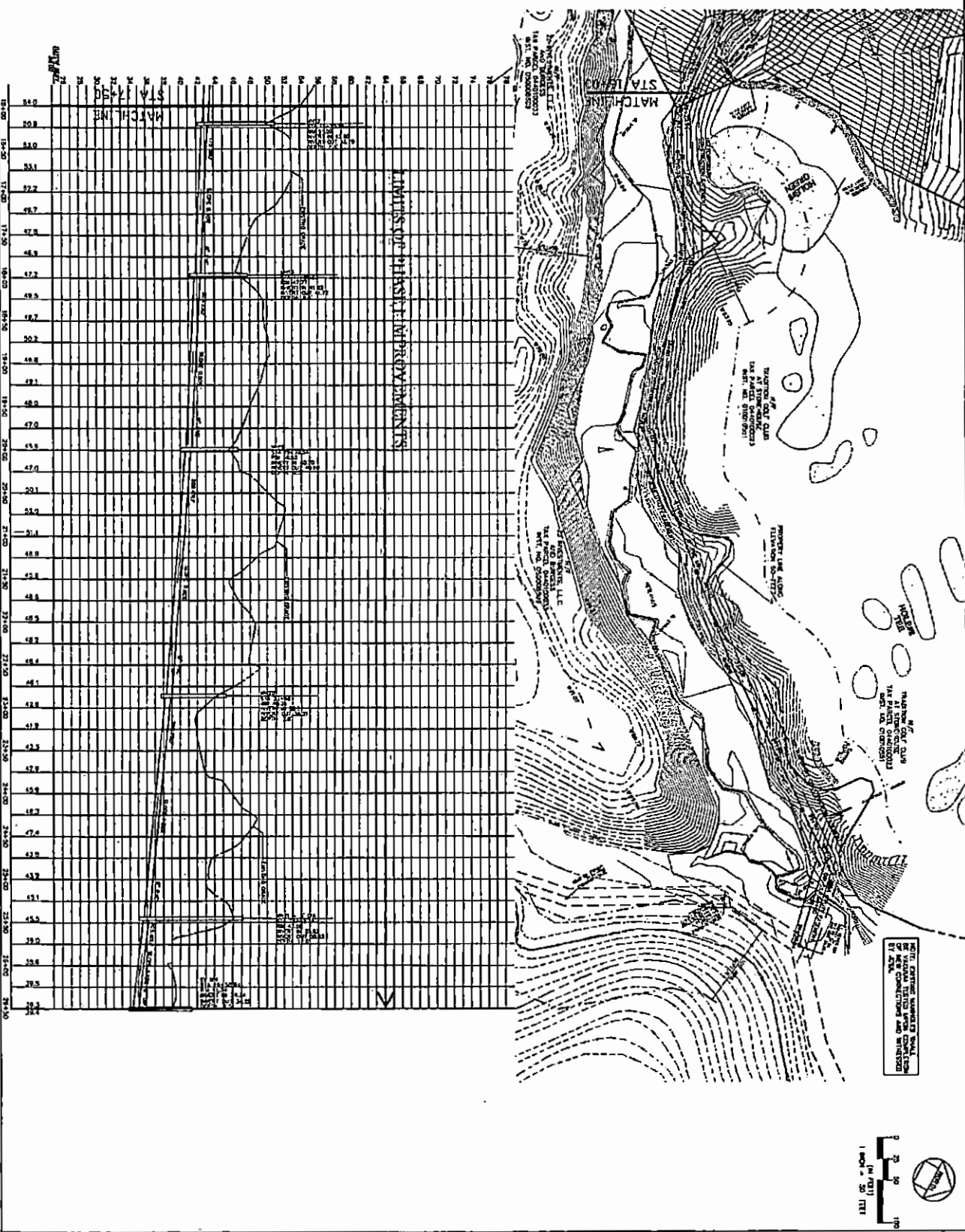


Exhibit C - Phase I Improvements

Page 2 of 3

NO.	DESCRIPTION	DATE
1	PRELIMINARY PLAN	08/10/11
2	REVISED PLAN	08/10/11
3	REVISED PLAN	08/10/11
4	REVISED PLAN	08/10/11
5	REVISED PLAN	08/10/11
6	REVISED PLAN	08/10/11
7	REVISED PLAN	08/10/11
8	REVISED PLAN	08/10/11
9	REVISED PLAN	08/10/11
10	REVISED PLAN	08/10/11
11	REVISED PLAN	08/10/11
12	REVISED PLAN	08/10/11
13	REVISED PLAN	08/10/11
14	REVISED PLAN	08/10/11
15	REVISED PLAN	08/10/11
16	REVISED PLAN	08/10/11
17	REVISED PLAN	08/10/11
18	REVISED PLAN	08/10/11
19	REVISED PLAN	08/10/11
20	REVISED PLAN	08/10/11
21	REVISED PLAN	08/10/11
22	REVISED PLAN	08/10/11
23	REVISED PLAN	08/10/11
24	REVISED PLAN	08/10/11
25	REVISED PLAN	08/10/11
26	REVISED PLAN	08/10/11
27	REVISED PLAN	08/10/11
28	REVISED PLAN	08/10/11
29	REVISED PLAN	08/10/11
30	REVISED PLAN	08/10/11
31	REVISED PLAN	08/10/11
32	REVISED PLAN	08/10/11
33	REVISED PLAN	08/10/11
34	REVISED PLAN	08/10/11
35	REVISED PLAN	08/10/11
36	REVISED PLAN	08/10/11
37	REVISED PLAN	08/10/11
38	REVISED PLAN	08/10/11
39	REVISED PLAN	08/10/11
40	REVISED PLAN	08/10/11
41	REVISED PLAN	08/10/11
42	REVISED PLAN	08/10/11
43	REVISED PLAN	08/10/11
44	REVISED PLAN	08/10/11
45	REVISED PLAN	08/10/11
46	REVISED PLAN	08/10/11
47	REVISED PLAN	08/10/11
48	REVISED PLAN	08/10/11
49	REVISED PLAN	08/10/11
50	REVISED PLAN	08/10/11
51	REVISED PLAN	08/10/11
52	REVISED PLAN	08/10/11
53	REVISED PLAN	08/10/11
54	REVISED PLAN	08/10/11
55	REVISED PLAN	08/10/11
56	REVISED PLAN	08/10/11
57	REVISED PLAN	08/10/11
58	REVISED PLAN	08/10/11
59	REVISED PLAN	08/10/11
60	REVISED PLAN	08/10/11
61	REVISED PLAN	08/10/11
62	REVISED PLAN	08/10/11
63	REVISED PLAN	08/10/11
64	REVISED PLAN	08/10/11
65	REVISED PLAN	08/10/11
66	REVISED PLAN	08/10/11
67	REVISED PLAN	08/10/11
68	REVISED PLAN	08/10/11
69	REVISED PLAN	08/10/11
70	REVISED PLAN	08/10/11
71	REVISED PLAN	08/10/11
72	REVISED PLAN	08/10/11
73	REVISED PLAN	08/10/11
74	REVISED PLAN	08/10/11
75	REVISED PLAN	08/10/11
76	REVISED PLAN	08/10/11
77	REVISED PLAN	08/10/11
78	REVISED PLAN	08/10/11
79	REVISED PLAN	08/10/11
80	REVISED PLAN	08/10/11
81	REVISED PLAN	08/10/11
82	REVISED PLAN	08/10/11
83	REVISED PLAN	08/10/11
84	REVISED PLAN	08/10/11
85	REVISED PLAN	08/10/11
86	REVISED PLAN	08/10/11
87	REVISED PLAN	08/10/11
88	REVISED PLAN	08/10/11
89	REVISED PLAN	08/10/11
90	REVISED PLAN	08/10/11
91	REVISED PLAN	08/10/11
92	REVISED PLAN	08/10/11
93	REVISED PLAN	08/10/11
94	REVISED PLAN	08/10/11
95	REVISED PLAN	08/10/11
96	REVISED PLAN	08/10/11
97	REVISED PLAN	08/10/11
98	REVISED PLAN	08/10/11
99	REVISED PLAN	08/10/11
100	REVISED PLAN	08/10/11

**LAND BAY 3
STONEHOUSE**
JAMES CITY COUNTY, VA
GS STONEHOUSE GREENLAND SUB, LLC
801 WYFFERDALE BLVD, SUITE 115
RALEIGH, NC 27607



WSP · SELLS
Transportation & Infrastructure
13401 Wexon Parkway Suite 100 • Cary, NC 27513 • 919.678.0035
www.wsp-sells.com

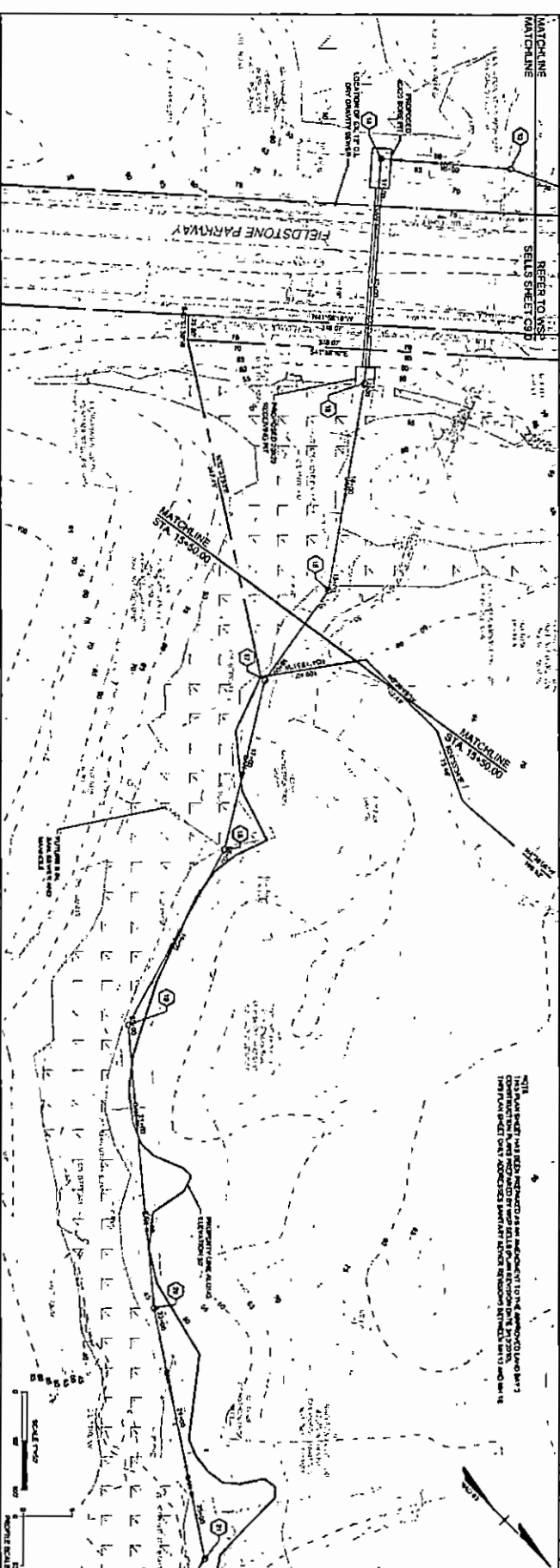
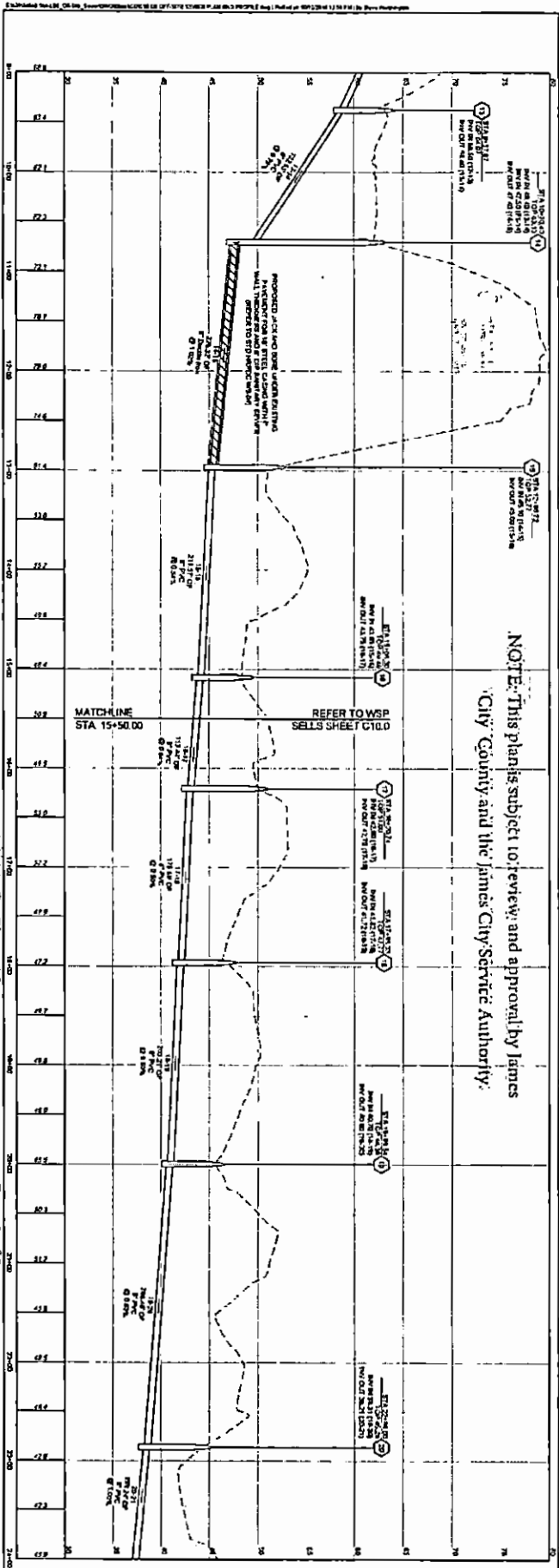


Exhibit C - Phase I Improvements

Page 3 of 3

TIMMONS GROUP

STONEHOUSE - LAND BAY 3
 JAMES CITY COUNTY - VIRGINIA
OFF-SITE SEWER PLAN AND PROFILE

DATE: 3/4/2004
 DRAWN BY: C10/DJR

NO.	DATE	REVISION DESCRIPTION



