

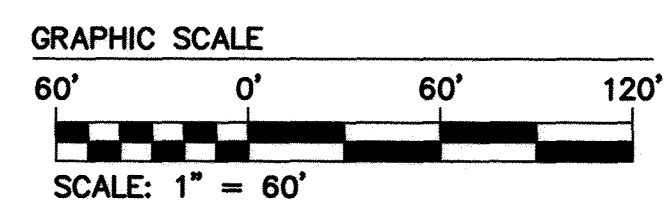
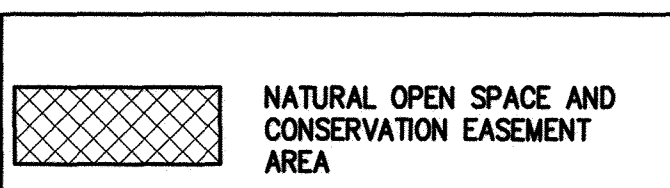
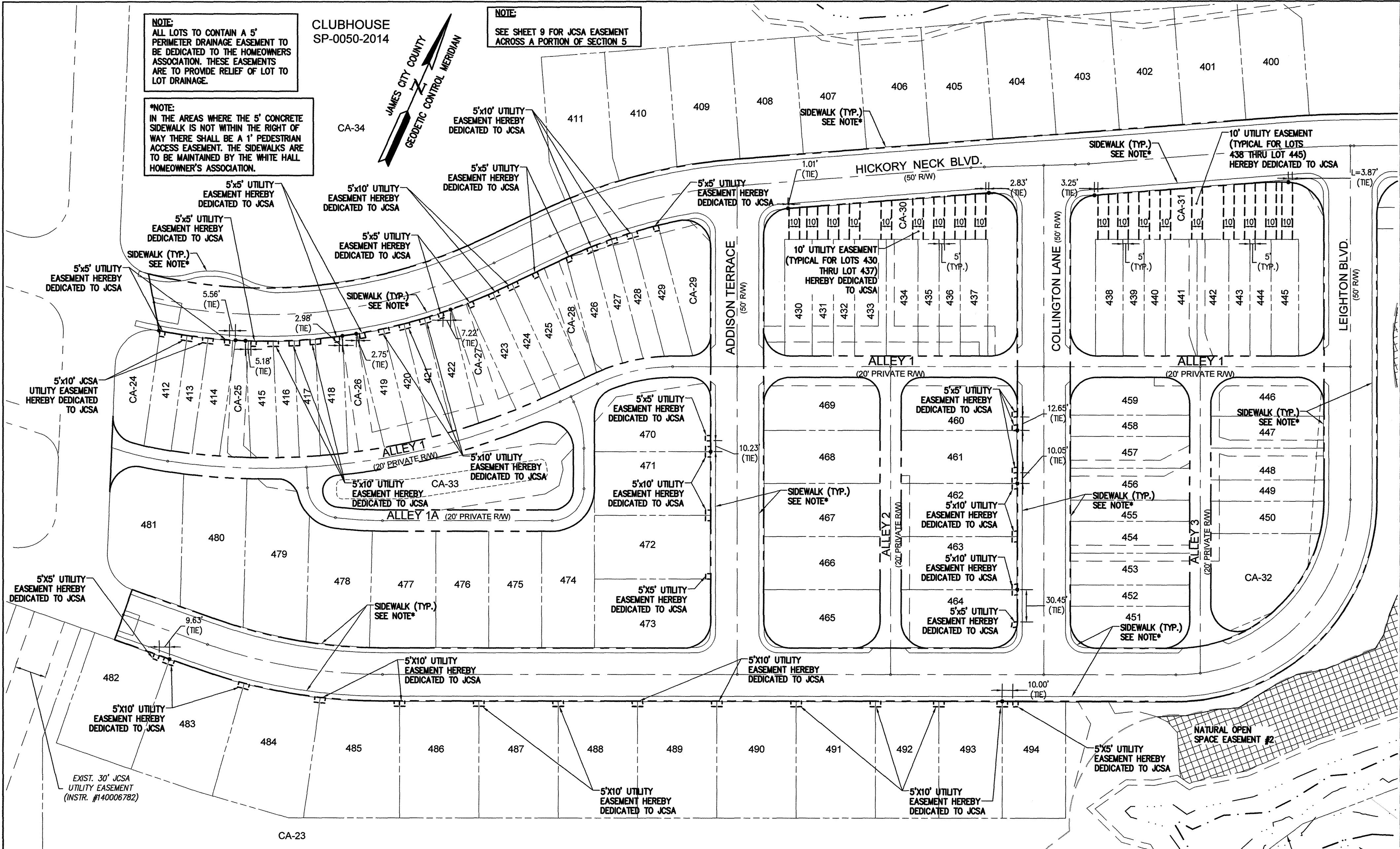
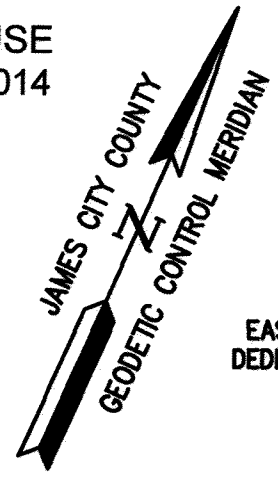
160014811

NOTE:
ALL LOTS TO CONTAIN A 5' PERIMETER DRAINAGE EASEMENT TO BE DEDICATED TO THE HOMEOWNERS ASSOCIATION. THESE EASEMENTS ARE TO PROVIDE RELIEF OF LOT TO LOT DRAINAGE.

*NOTE:
IN THE AREAS WHERE THE 5' CONCRETE SIDEWALK IS NOT WITHIN THE RIGHT OF WAY THERE SHALL BE A 1' PEDESTRIAN ACCESS EASEMENT. THE SIDEWALKS ARE TO BE MAINTAINED BY THE WHITE HALL HOMEOWNER'S ASSOCIATION.

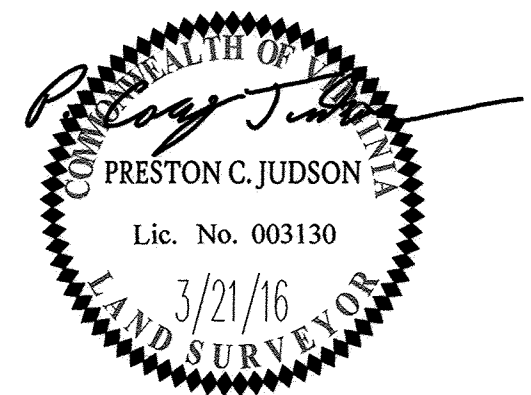
NOTE:
SEE SHEET 9 FOR JCSEA EASEMENT ACROSS A PORTION OF SECTION 5

CLUBHOUSE
SP-0050-2014



N/F
GEORGE M. HANKINS, JR. TRUSTEE
AND
SHARON H. DUNN, TRUSTEE
TAX MAP PARCEL #: (12-4)(1-11)
INSTRUMENT #970020151
D.B. 24, PG. 372
WILL FILE 00718-05W
WILL FILE 98718-06W
ZONE A1

City of Williamsburg & County of James City		Circuit Court: This PLAT was recorded on	
		8/19/2016	
at 2:41 PM, PB PG			
Document # 160014811			
MONA A. FOLEY, CLERK			
Mona A. Foley, Clerk			
1	5-9-16	REVISED PER COUNTY COMMENTS DATED 4-1-16	JFS
Rev.	Date	Description	Revised By



Large/Small Plat(s) Recorded
herewith as # 160014811

AES
CONSULTING ENGINEERS

5248 Olde Towne Road, Suite 1
Williamsburg, Virginia 23188
Phone: (757) 253-0040
Fax: (757) 220-8994
www.aesva.com

Hampton Roads | Central Virginia | Middle Peninsula

PLAT OF SUBDIVISION
WHITE HALL
SECTION 4, LOTS 400-494

STONEHOUSE DISTRICT JAMES CITY COUNTY VIRGINIA

Project Contacts:	PCJ/JFS
Project Number:	9048-20B
Scale:	Date:
1"=60'	3/21/2016
Sheet Number	
10 OF 11	

S:\DPS\0808208 - White Hall Sec 4\Survey\Plan\160014811.dwg, 7/27/2016 3:00:37 PM, HP DesignJet 4000 HPGL2, RTL, pl3