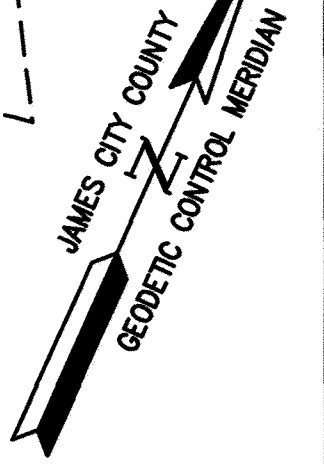
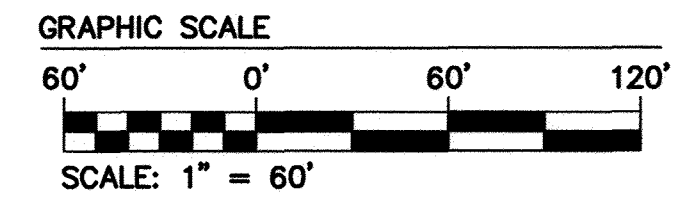
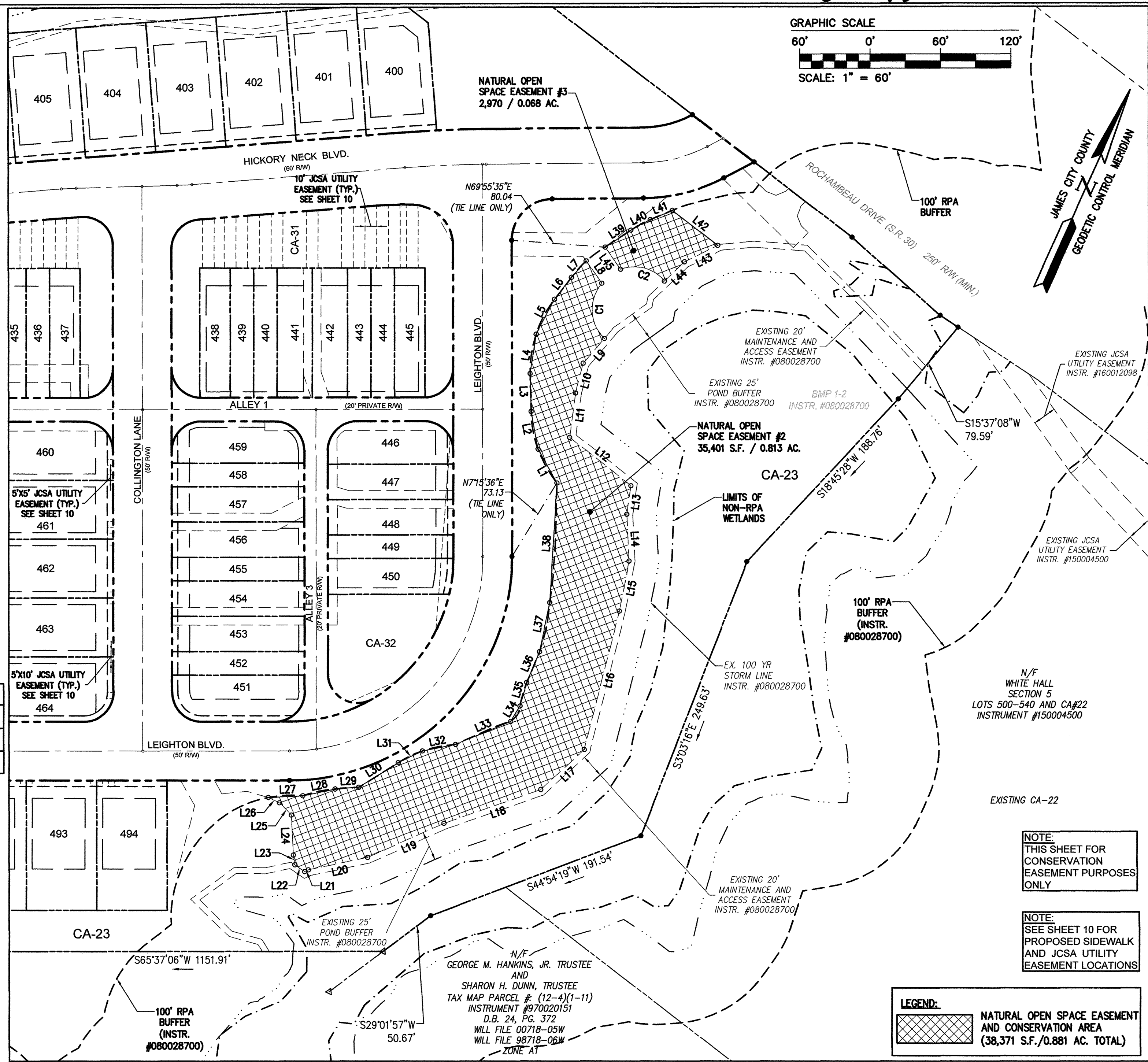


160014811

LINE	BEARING	LENGTH
L1	N53°46'24"W	32.73'
L2	N34°56'11"W	32.73'
L3	N25°31'04"W	32.27'
L4	N15°49'48"W	33.66'
L5	N3°32'45"E	33.66'
L6	N13°14'01"E	23.54'
L7	N18°37'39"E	18.80'
L8	S59°04'53"E	22.98'
L9	S16°09'11"W	27.55'
L10	S9°22'38"E	26.14'
L11	S17°09'33"E	38.05'
L12	S76°11'16"E	66.32'
L13	S15°38'48"E	24.54'
L14	S27°22'36"E	39.68'
L15	S13°14'37"E	43.36'
L16	S9°59'36"E	121.32'
L17	S23°14'34"W	50.10'
L18	S46°35'44"W	87.43'
L19	S41°36'31"W	71.12'
L20	S53°54'00"W	51.70'
L21	S39°44'46"W	3.60'
L22	N79°25'17"W	10.06'
L23	N32°26'04"W	8.39'
L24	N27°34'08"W	33.97'
L25	N67°25'17"W	14.46'
L26	N88°33'59"W	10.54'
L27	N63°07'04"E	29.36'

LINE	BEARING	LENGTH
L28	N53°49'59"E	28.12'
L29	N61°55'02"E	20.17'
L30	N33°43'06"E	39.48'
L31	N40°04'51"E	22.87'
L32	N54°36'30"E	29.01'
L33	N42°59'31"E	50.86'
L34	N6°26'54"E	15.21'
L35	N7°45'44"W	20.77'
L36	N1°48'06"W	28.22'
L37	N12°26'36"W	42.70'
L38	N20°50'21"W	101.66'
L39	N32°00'37"E	26.14'
L40	N37°39'26"E	18.70'
L41	N43°01'24"E	20.43'
L42	S76°56'38"E	48.92'
L43	S39°43'27"W	31.55'
L44	S22°09'37"W	23.88'
L45	N59°04'53"W	22.74'

CURVE #	DELTA	RADIUS	LENGTH	TANGENT	CHORD	CHORD BEARING
C1	84°57'49"	34.75'	51.54'	31.83'	46.94'	S26°54'06"E
C2	71°47'23"	33.00'	41.35'	23.88'	38.70'	S80°50'35"W



11 Large/Small Plat(s) Recorded herewith as # 160014811

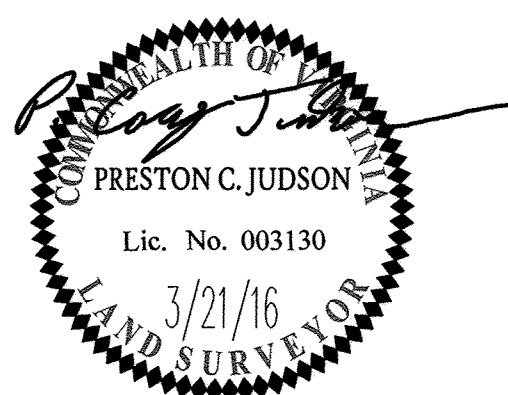
NOTE: THIS SHEET FOR CONSERVATION EASEMENT PURPOSES ONLY

NOTE: SEE SHEET 10 FOR PROPOSED SIDEWALK AND JCSA UTILITY EASEMENT LOCATIONS

LEGEND:
 NATURAL OPEN SPACE EASEMENT AND CONSERVATION AREA (38,371 S.F./0.881 AC. TOTAL)

N/F GEORGE M. HANKINS, JR. TRUSTEE AND SHARON H. DUNN, TRUSTEE
 TAX MAP PARCEL #: (12-4)(1-11)
 INSTRUMENT #970020151
 D.B. 24, PG. 372
 WILL FILE 00718-05W
 WILL FILE 98718-06W
 ZONE AT

City of Williamsburg & County of James City
 Circuit Court: This PLAT was recorded on 8-19-2016
 at 2:41 AM/PM, PB PG
 Document # 160014811
 MONA A. FOLEY, CLERK
Mona A. Foley, Clerk



AES
 CONSULTING ENGINEERS
 5248 Olde Towne Road, Suite 1
 Williamsburg, Virginia 23188
 Phone: (757) 253-0040
 Fax: (757) 220-8994
 www.aesva.com

PLAT OF SUBDIVISION
WHITE HALL
SECTION 4, LOTS 400-494
 STONEHOUSE DISTRICT JAMES CITY COUNTY VIRGINIA

Project Contacts: PCJ/JFS
 Project Number: 9048-20B
 Scale: 1"=60'
 Date: 3/21/2016
 Sheet Number
9 OF 11

S:\0853048208 - White Hall Sec 4\Survey\Plat\9048-20B SUBD.plt 8 Aug 7/27/2016 3:05:18 PM HP DesignJet 4000 HPGL2_RTL.plt

Rev.	Date	Description	Revised By
1	5-9-16	REVISED PER COUNTY COMMENTS DATED 4-1-16	JFS