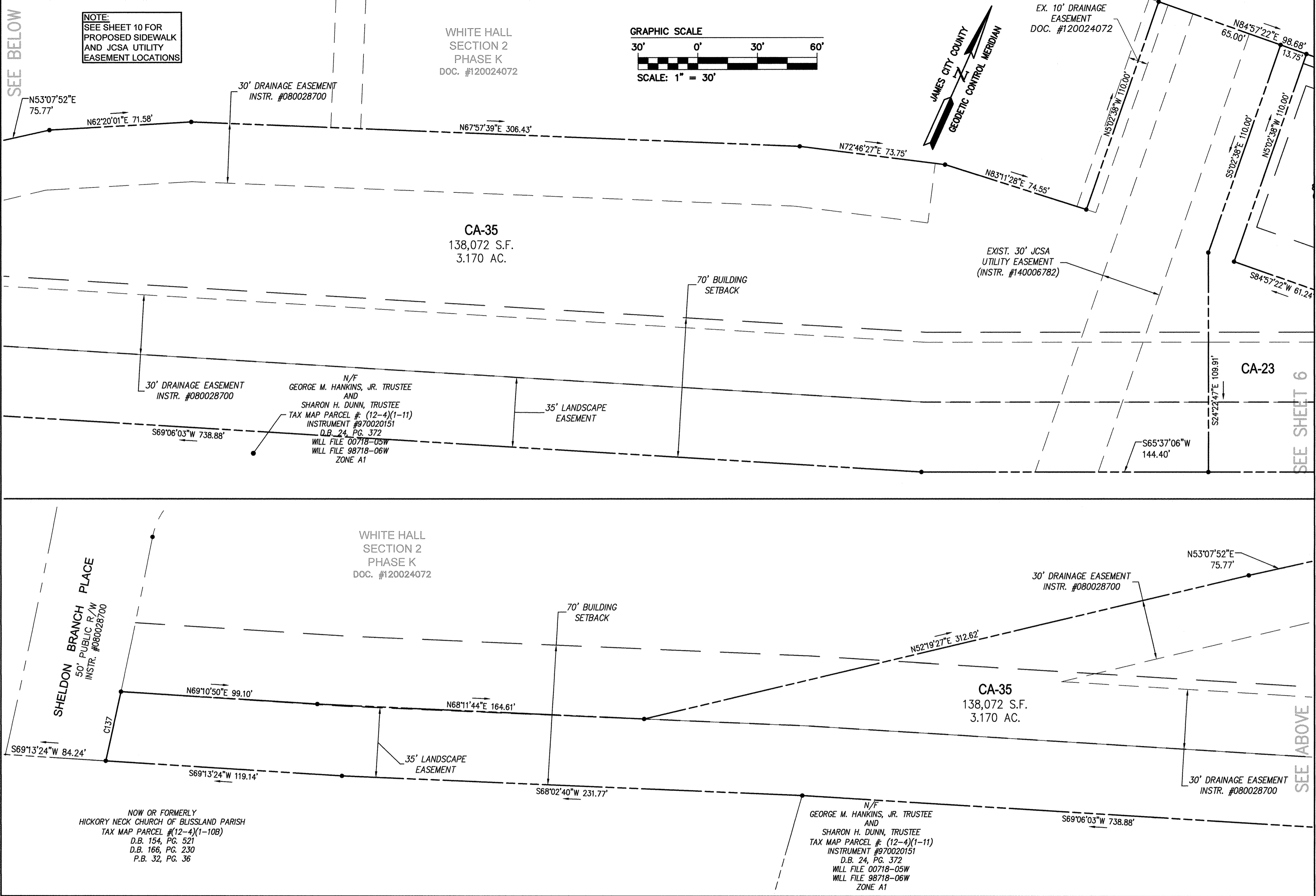
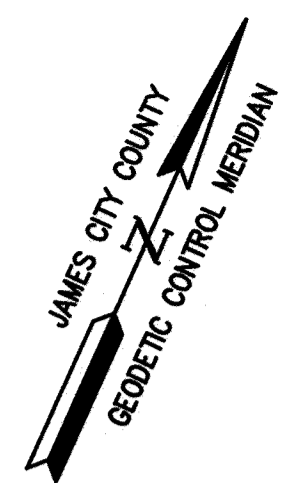
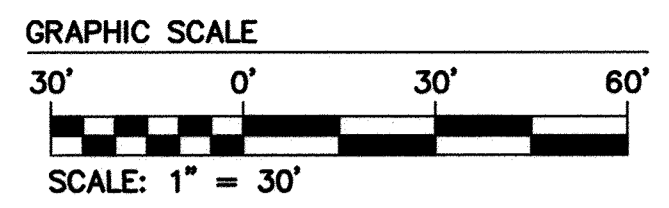


160014811



NOTE:
SEE SHEET 10 FOR
PROPOSED SIDEWALK
AND JCSA UTILITY
EASEMENT LOCATIONS

WHITE HALL
SECTION 2
PHASE K
DOC. #120024072



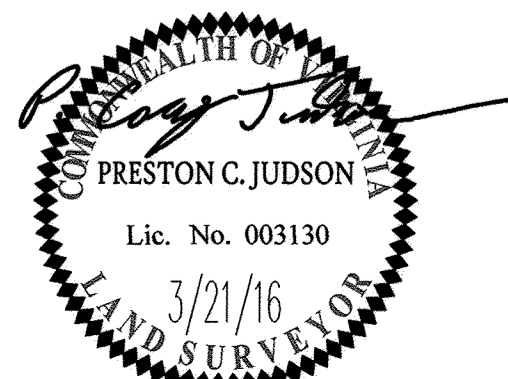
EX. 10' DRAINAGE
EASEMENT
DOC. #120024072

SEE SHEET 6

SEE ABOVE

S:\Projects\160014811 - White Hall Sec 2\Survey\Plan\160014811.dwg, 7/5/2016, 3:07:03 PM, HP, Dateplot, 4000, HROL, RFL, P3

City of Williamsburg and County of James City Circuit Court: This PLAT was recorded on <u>8-19-2016</u>	
at <u>2:41</u> PM, PG <u>—</u>	
Document # <u>160014811</u>	
MONA A. FOLEY, CLERK	
<i>Mona A. Foley</i>	Clerk
1	5-9-16
Rev.	Date
REVISED PER COUNTY COMMENTS DATED 4-1-16	
JFS	Revised By



11 Large/Small Plat(s) Recorded
herewith as # 160014811

5248 Olde Towne Road, Suite 1
Williamsburg, Virginia 23188
Phone: (757) 253-0040
Fax: (757) 220-8994
www.aesva.com

Hampton Roads | Central Virginia | Middle Peninsula

PLAT OF SUBDIVISION
WHITE HALL
SECTION 4, LOTS 400-494

STONEHOUSE DISTRICT JAMES CITY COUNTY VIRGINIA

Project Contacts:	PC/JJFS
Project Number:	9048-20B
Scale:	Date:
1"=30'	3/21/2016
Sheet Number	
8 OF 11	