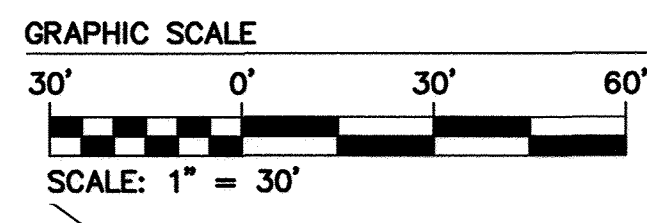


160014811

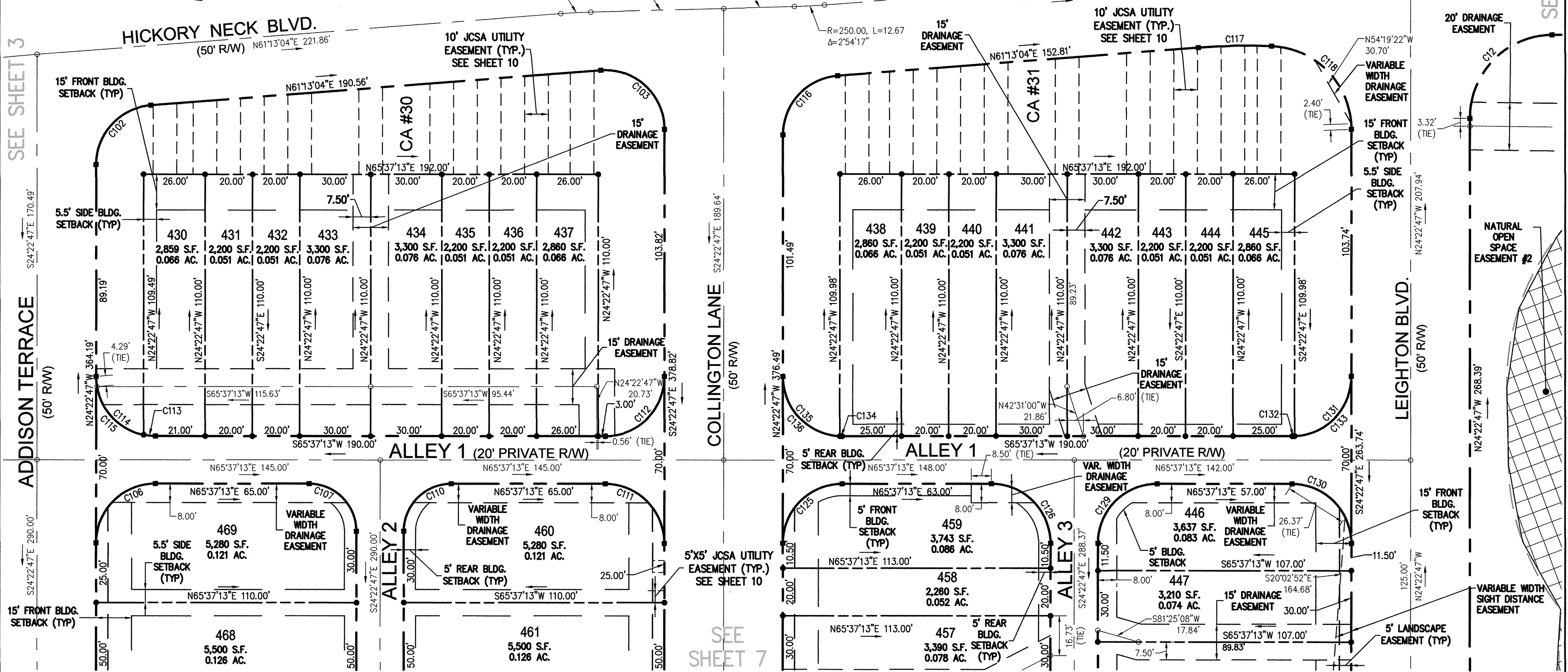
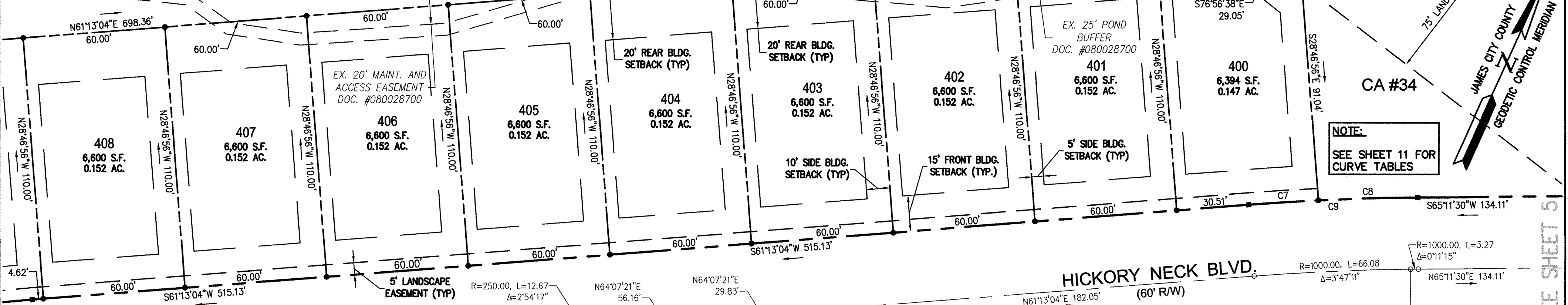
NOTE: DRAINAGE EASEMENT IS REAR BUILDING SETBACK TYPICAL FOR FOR LOT 430 THRU LOT 437



CA #34 LIMITS OF NON-RPA WETLANDS

NOTE: SEE SHEET 10 FOR PROPOSED SIDEWALK AND JCSA UTILITY EASEMENT LOCATIONS

NOTE: SEE SHEET 11 FOR CURVE TABLES

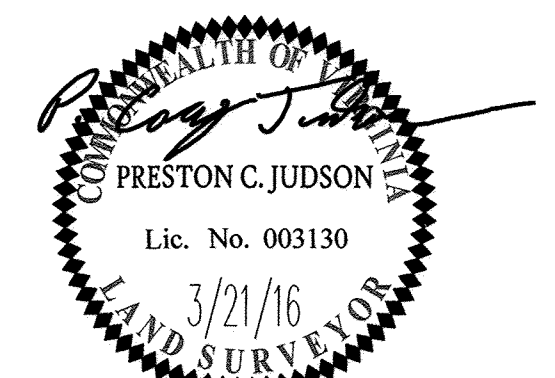


SEE SHEET 3

SEE SHEET 5

SEE SHEET 7

City of Williamsburg & County of James City Circuit Court: This PLAT was recorded on 8-19-2016 at 2:41 PM, PG at Document # 160014811 MONA A. FOLEY, CLERK



AES CONSULTING ENGINEERS  
5248 Olde Towne Road, Suite 1  
Williamsburg, Virginia 23188  
Phone: (757) 253-0040  
Fax: (757) 220-8994  
www.aesva.com

PLAT OF SUBDIVISION  
WHITE HALL  
SECTION 4, LOTS 400-494  
STONEHOUSE DISTRICT JAMES CITY COUNTY VIRGINIA

Project Contacts: PCJ/JFS  
Project Number: 9048-20B  
Scale: 1"=30'  
Date: 3/21/2016  
Sheet Number: 4 OF 11

S:\0850948208 - White Hall Sec 4\Survey\Plan\CA30-208 SUBD\_PLN.dwg, 7/5/2016 3:14:06 PM, HP Design 4000 HPL2L.RTL.pcl

Rev.	Date	Description	Revised By
1	5-9-16	REVISED PER COUNTY COMMENTS DATED 4-1-16	JFS