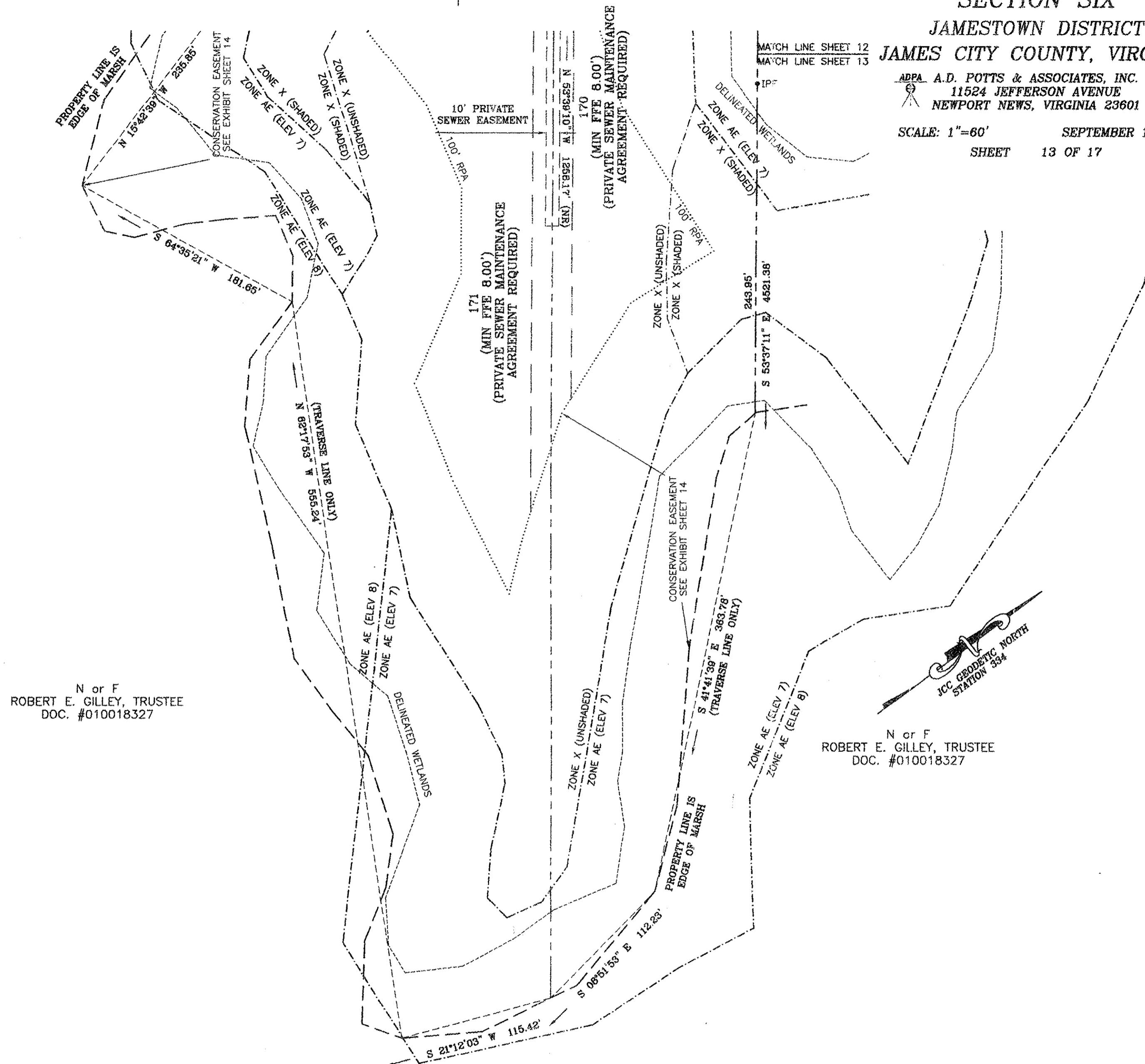


PELEG'S POINT
SECTION SIX
JAMESTOWN DISTRICT
JAMES CITY COUNTY, VIRGINIA

ADPA A.D. POTTS & ASSOCIATES, INC.
11524 JEFFERSON AVENUE
NEWPORT NEWS, VIRGINIA 23601

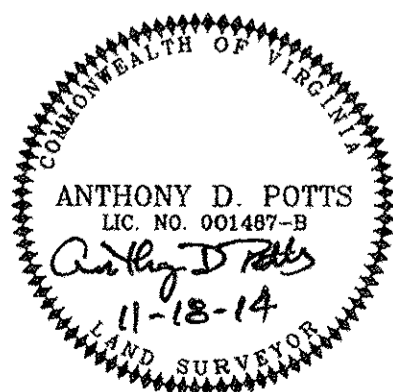
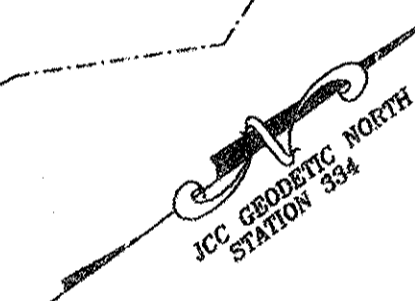
SCALE: 1"=60' SEPTEMBER 17, 2014
SHEET 13 OF 17

MATCH LINE SHEET 12
MATCH LINE SHEET 13



N or F
ROBERT E. GILLEY, TRUSTEE
DOC. #010018327

N or F
ROBERT E. GILLEY, TRUSTEE
DOC. #010018327



17 Large/Small Plat(s) Recorded
herewith as # 160011190

City of Williamsburg & County of James City
Circuit Court: This PLAT was recorded on
6-21-2016
at 3:57 AM/PM, PB — PG —
Document # 160011190
MONA A. FOLEY, CLERK

Maat Gilley, Clerk