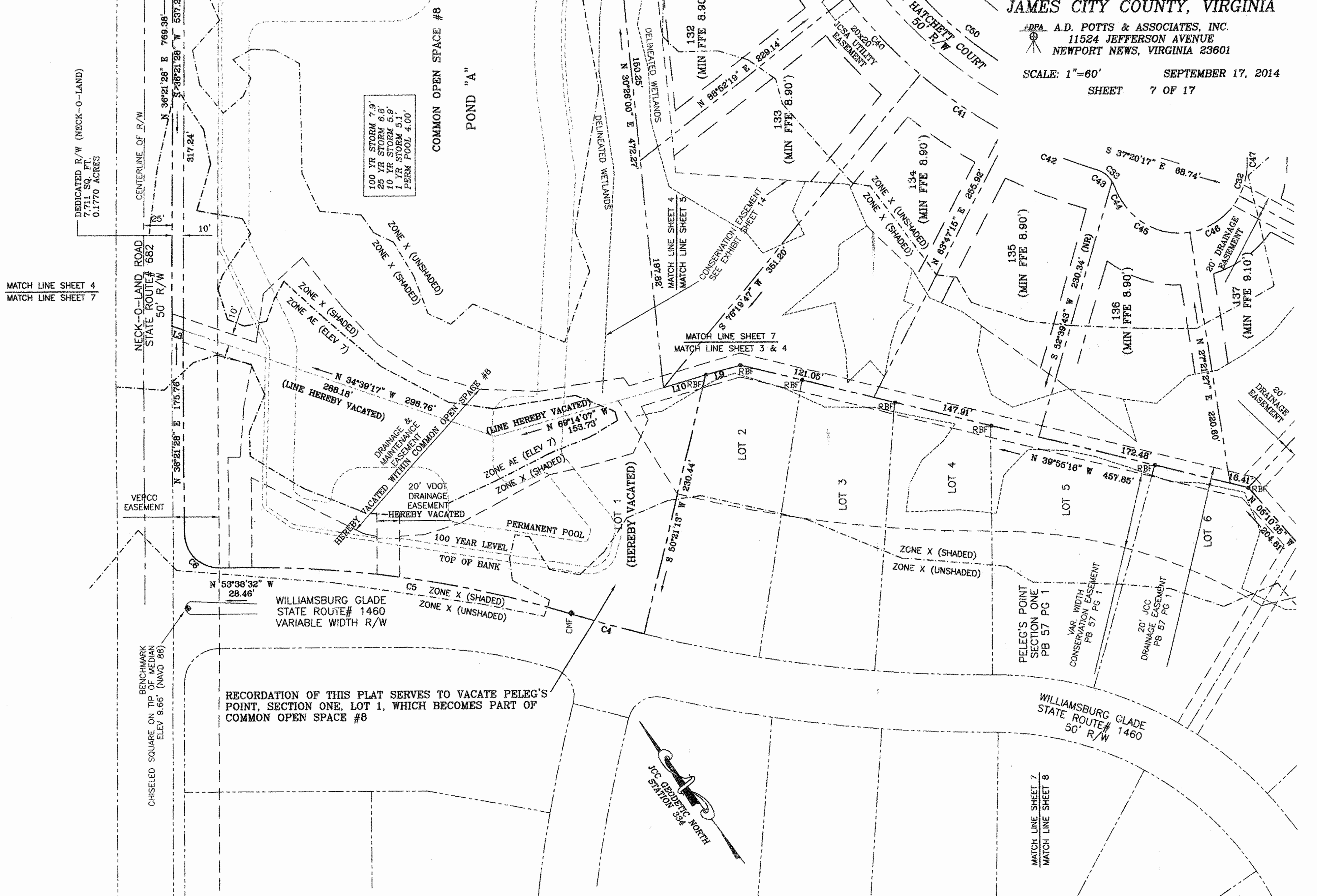


PELEG'S POINT SECTION SIX

JAMESTOWN DISTRICT
JAMES CITY COUNTY, VIRGINIA

A.D.P.A. A.D. POTTS & ASSOCIATES, INC.
11524 JEFFERSON AVENUE
NEWPORT NEWS, VIRGINIA 23601

SCALE: 1"=60' SEPTEMBER 17, 2014
SHEET 7 OF 17



RECORDATION OF THIS PLAT SERVES TO VACATE PELEG'S POINT, SECTION ONE, LOT 1, WHICH BECOMES PART OF COMMON OPEN SPACE #8

17 Large/Small Plat(s) Recorded
herewith as # 160011190

City of Williamsburg & County of James City
Circuit Court: This PLAT was recorded on
6-21-2016
at 3:57 AM/PM, PB PG
Document # 160011190
MONA A. FOLEY, CLERK
Mon A Foley, Clerk

