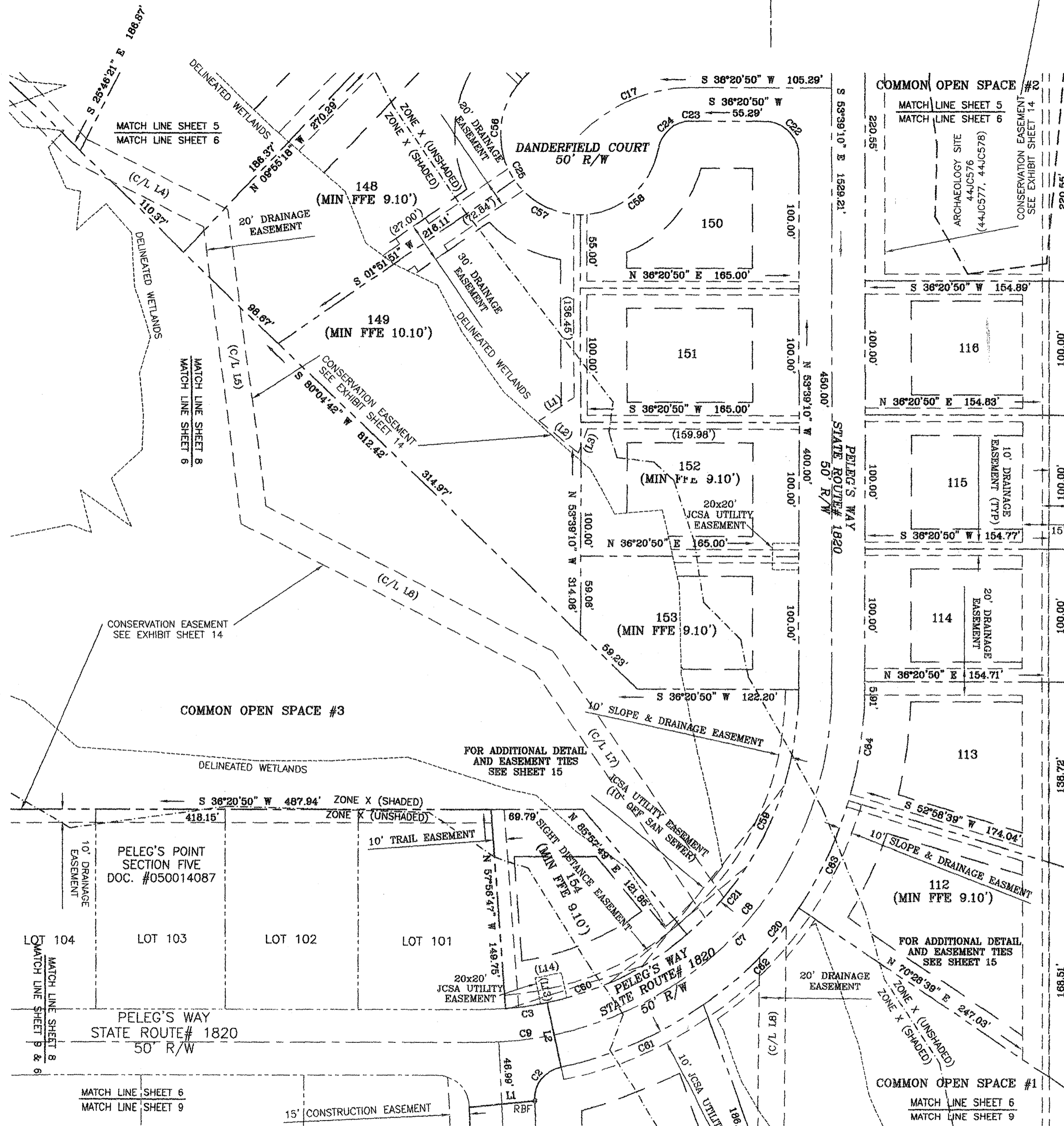


**PELEG'S POINT
SECTION SIX
JAMESTOWN DISTRICT
JAMES CITY COUNTY, VIRGINIA**

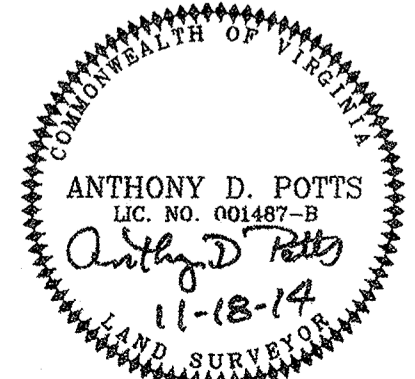
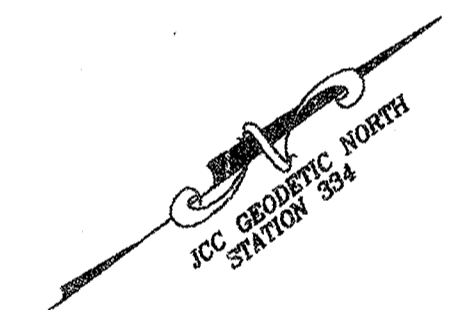
ADPA A.D. POTTS & ASSOCIATES, INC.
11524 JEFFERSON AVENUE
NEWPORT NEWS, VIRGINIA 23601

SCALE: 1"=60' SEPTEMBER 17, 2014
SHEET 6 OF 17



15' JCSA FORCE MAIN EASEMENT
DB 598 PG 172
HEREBY VACATED WITHIN SECTION SIX
20' JCSA FORCE MAIN EASEMENT
20' DRAINAGE EASEMENT

N or F
REGJAG, LLC
DOC# 010018330



17 Large/Small Plat(s) Recorded
herewith as # 160011190
City of Williamsburg & County of James City
Circuit Court: This PLAT was recorded on
6.21.2016
at 3:57 AM/PM, PB PG
Document # 160011190
MONA A. FOLEY, CLERK
Mon A. Foley, Clerk

