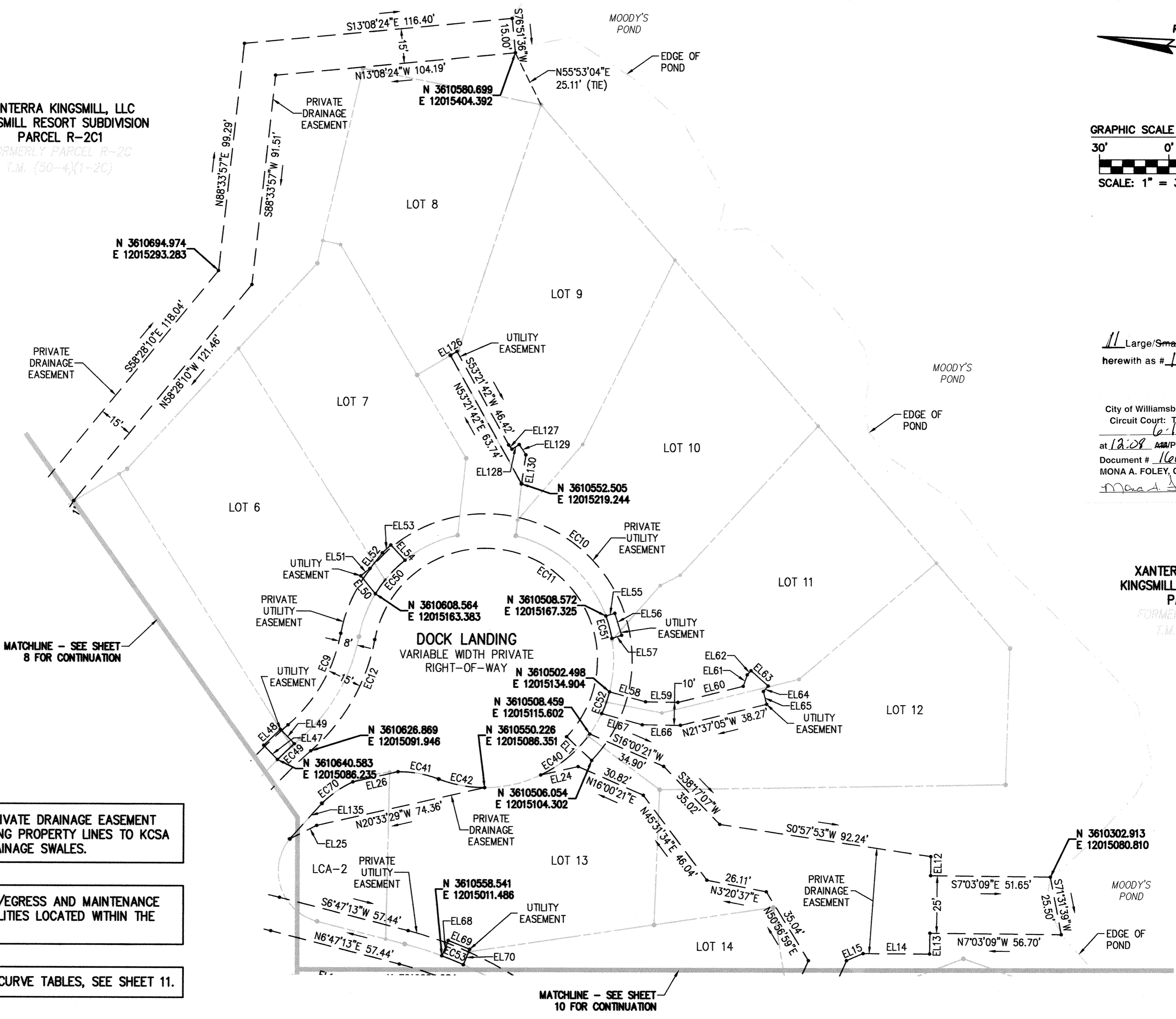


XANTERRA KINGSMILL, LLC
KINGSMILL RESORT SUBDIVISION
PARCEL R-2C1
FORMERLY PARCEL R-2C
T.M. (50-4)(1-20)



11 Large/Small Plat(s) Recorded
herewith as # 160010933

City of Williamsburg & County of James City
Circuit Court: This PLAT was recorded on
6-16-2016
at 12:08 PM, PG. —
Document # 160010933
MONA A. FOLEY, CLERK
Mona A. Foley, Clerk

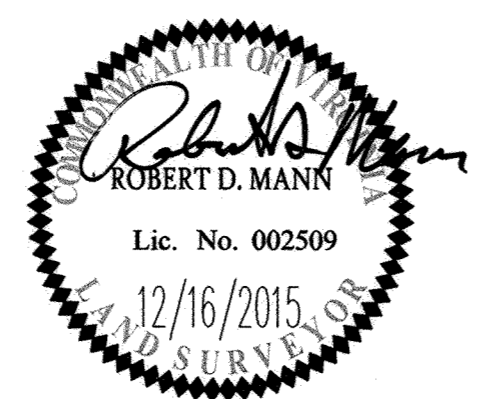
XANTERRA KINGSMILL, LLC
KINGSMILL RESORT SUBDIVISION
PARCEL R-2C1
FORMERLY PARCEL R-2C
T.M. (50-4)(1-20)

NOTE: A 5' PERIMETER PRIVATE DRAINAGE EASEMENT SHALL BE DEDICATED ALONG PROPERTY LINES TO KCSA FOR MAINTENANCE OF DRAINAGE SWALES.

NOTE: JCSA HAS INGRESS/EGRESS AND MAINTENANCE RIGHTS FOR ALL JCSA UTILITIES LOCATED WITHIN THE RIGHT-OF-WAY.

FOR EASEMENT LINE AND CURVE TABLES, SEE SHEET 11.

Rev.	Date	Description	Revised By



AES
CONSULTING ENGINEERS
816 Greenbrier Circle, Suite F
Chesapeake, Virginia 23320
Phone: (757) 410-7436
www.aesva.com
Hampton Roads | Central Virginia | Middle Peninsula

PLAT OF SUBDIVISION
BURWELL'S BLUFF
AT
KINGSMILL ON THE JAMES
FOR
XANTERRA KINGSMILL, LLC
ROBERTS DISTRICT JAMES CITY COUNTY VIRGINIA

Project Contacts: RDM	
Project Number: 7753-39	
Scale: 1" = 30'	Date: 10/05/15
Sheet Number	
9 OF 11	