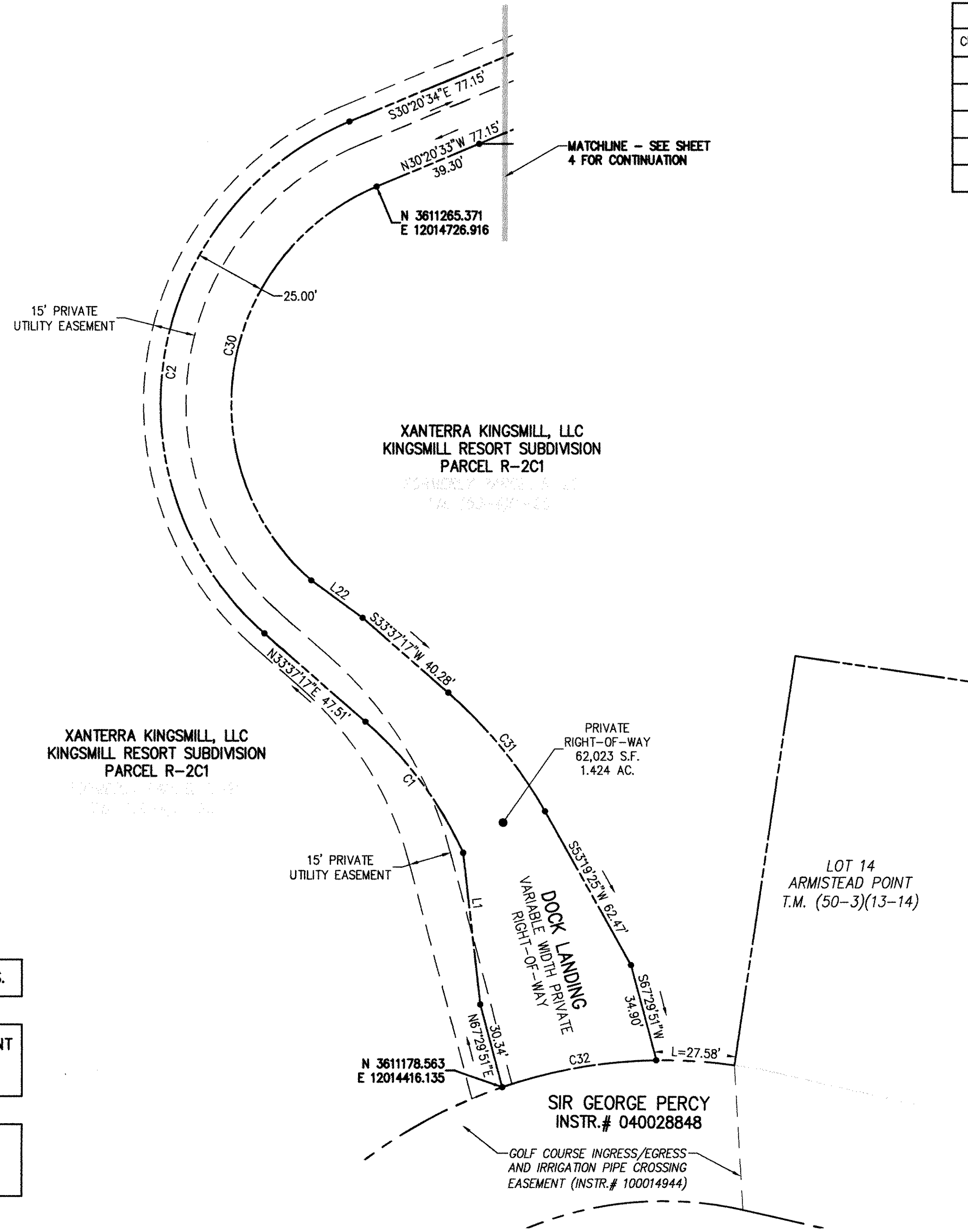


160010933

CURVE TABLE						
CURVE #	DELTA	RADIUS	LENGTH	TANGENT	CHORD	CHORD BEARING
C1	24°18'27"	137.50'	58.33'	29.61'	57.90'	N45°46'31"E
C2	116°02'08"	108.50'	219.74'	173.76'	184.06'	S88°21'39"E
C30	116°02'08"	83.50'	169.11'	133.72'	141.65'	N88°21'39"W
C31	19°11'44"	162.50'	54.44'	27.48'	54.19'	S43°13'09"W
C32	18°08'58"	175.00'	55.43'	27.95'	55.20'	N17°35'24"W

LINE TABLE		
LINE	BEARING	LENGTH
L1	N75°56'52"E	54.17'
L22	S28°31'21"W	22.52'



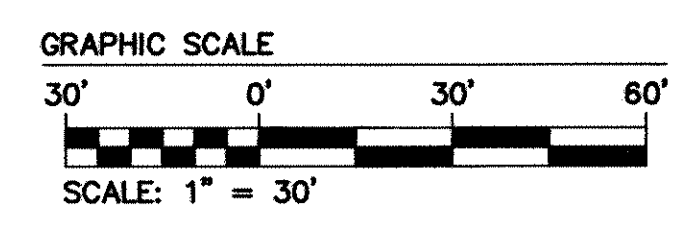
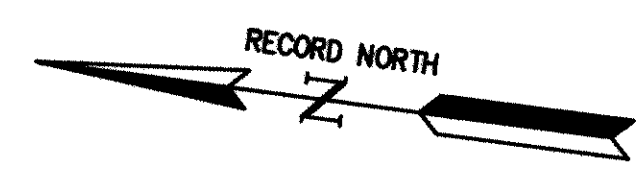
SEE SHEETS 7 THRU 11 FOR EASEMENT DIMENSIONS.

NOTE: A 5' PERIMETER PRIVATE DRAINAGE EASEMENT SHALL BE DEDICATED ALONG PROPERTY LINES TO KCSA FOR MAINTENANCE OF DRAINAGE SWALES.

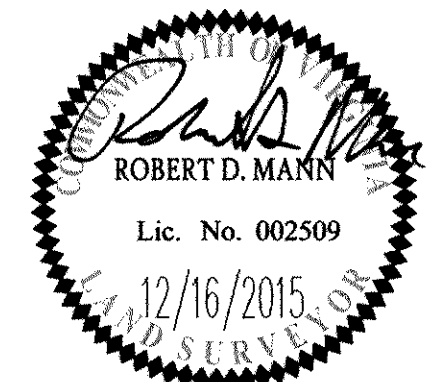
NOTE: JCSA HAS INGRESS/EGRESS AND MAINTENANCE RIGHTS FOR ALL JCSA UTILITIES LOCATED WITHIN THE RIGHT-OF-WAY.

// Large/Small Plat(s) Recorded herewith as # 160010933

City of Williamsburg & County of James City Circuit Court: This PLAT was recorded on 6-16-2016 at 12:08 PM, PG Document # 160010933 MONA A. FOLEY, CLERK



Rev.	Date	Description	Revised By



AES
CONSULTING ENGINEERS
816 Greenbrier Circle, Suite F
Chesapeake, Virginia 23320
Phone: (757) 410-7436
www.aesva.com
Hampton Roads | Central Virginia | Middle Peninsula

PLAT OF SUBDIVISION
BURWELL'S BLUFF
AT
KINGSMILL ON THE JAMES
FOR
XANTERRA KINGSMILL, LLC
ROBERTS DISTRICT JAMES CITY COUNTY VIRGINIA

Project Contacts: RDM
Project Number: 7753-39
Scale: 1" = 30' Date: 10/05/15
Sheet Number
3 OF 11