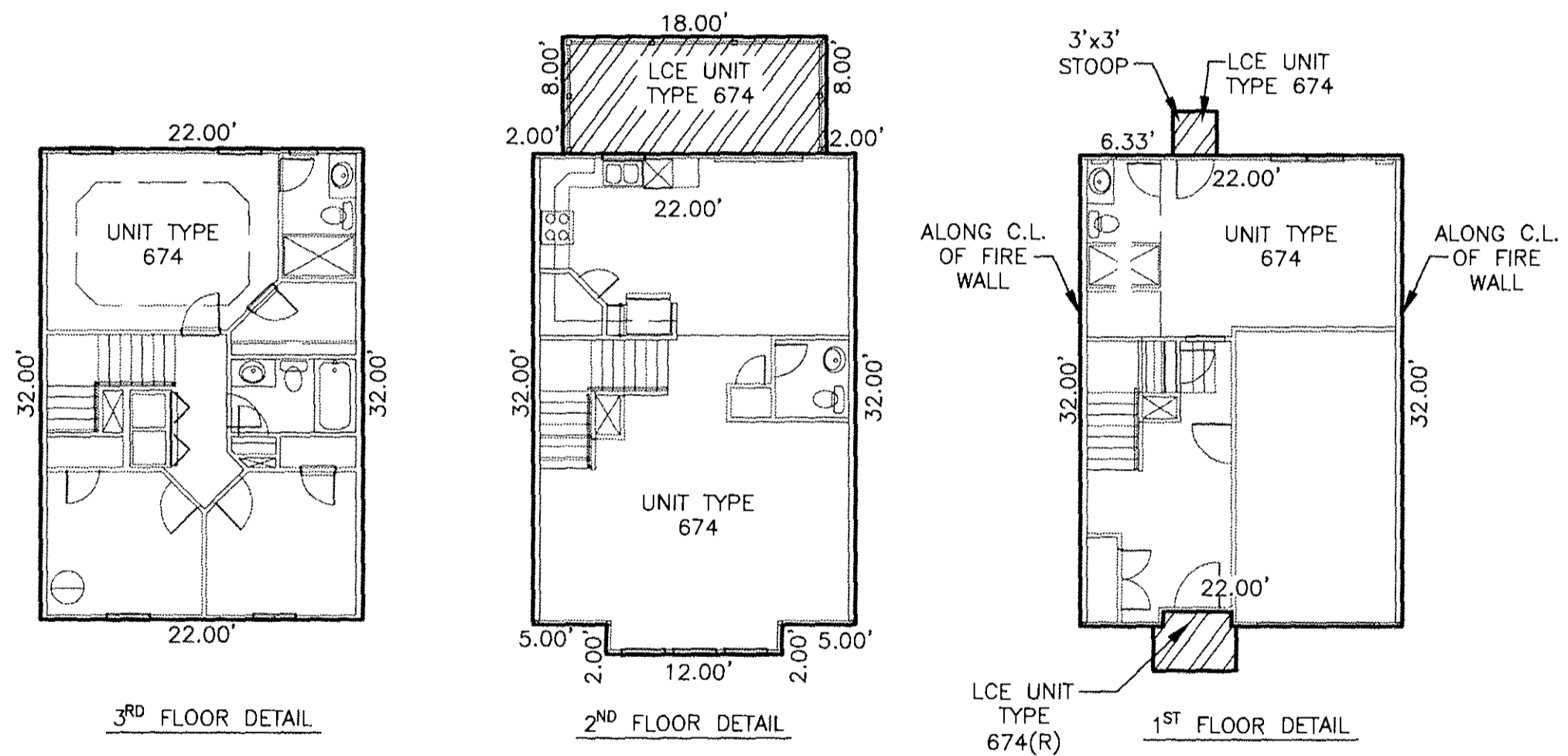


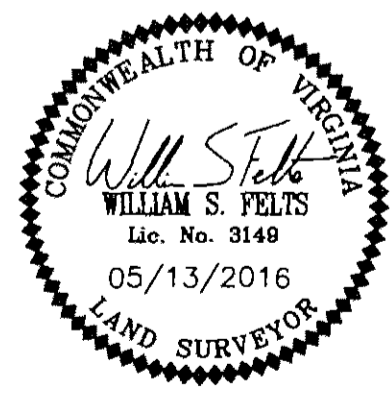
160009184



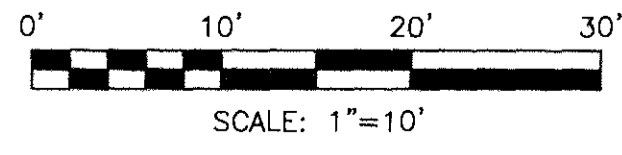
6 Large/Small Plat(s) Recorded
herewith as # 160009184

City of Williamsburg & County of James City
Circuit Court: This PLAT was recorded on
5-23-2016
at 2:25 AM/PM, PB PG
Document # 160009184
MONA A. FOLEY, CLERK
Mona A. Foley, Clerk

PLAN OF
TOWNHOUSES
GOVERNOR'S GROVE AT FIVE FORKS
A CONDOMINIUM
LOCATED IN THE BERKELEY DISTRICT
JAMES CITY COUNTY, VIRGINIA
DATE: 05/13/2016 SCALE: 1" = 10' JOB# 06-460
SHEET: 1 OF 6



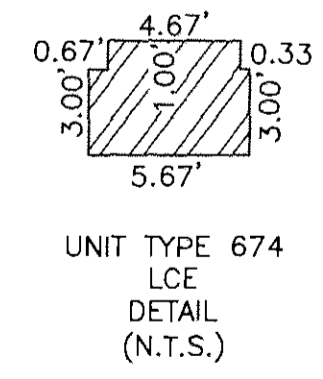
SURVEYORS CERTIFICATE
I HEREBY CERTIFY THAT THIS PLAT IS ACCURATE AND COMPLIES WITH THE PROVISIONS OF SECTION 55-79.58 (A) OF THE CODE OF VIRGINIA 1950 AS AMENDED AND I FURTHER CERTIFY THAT ALL UNITS DEPICTED HEREON HAVE BEEN SUBSTANTIALLY COMPLETE.



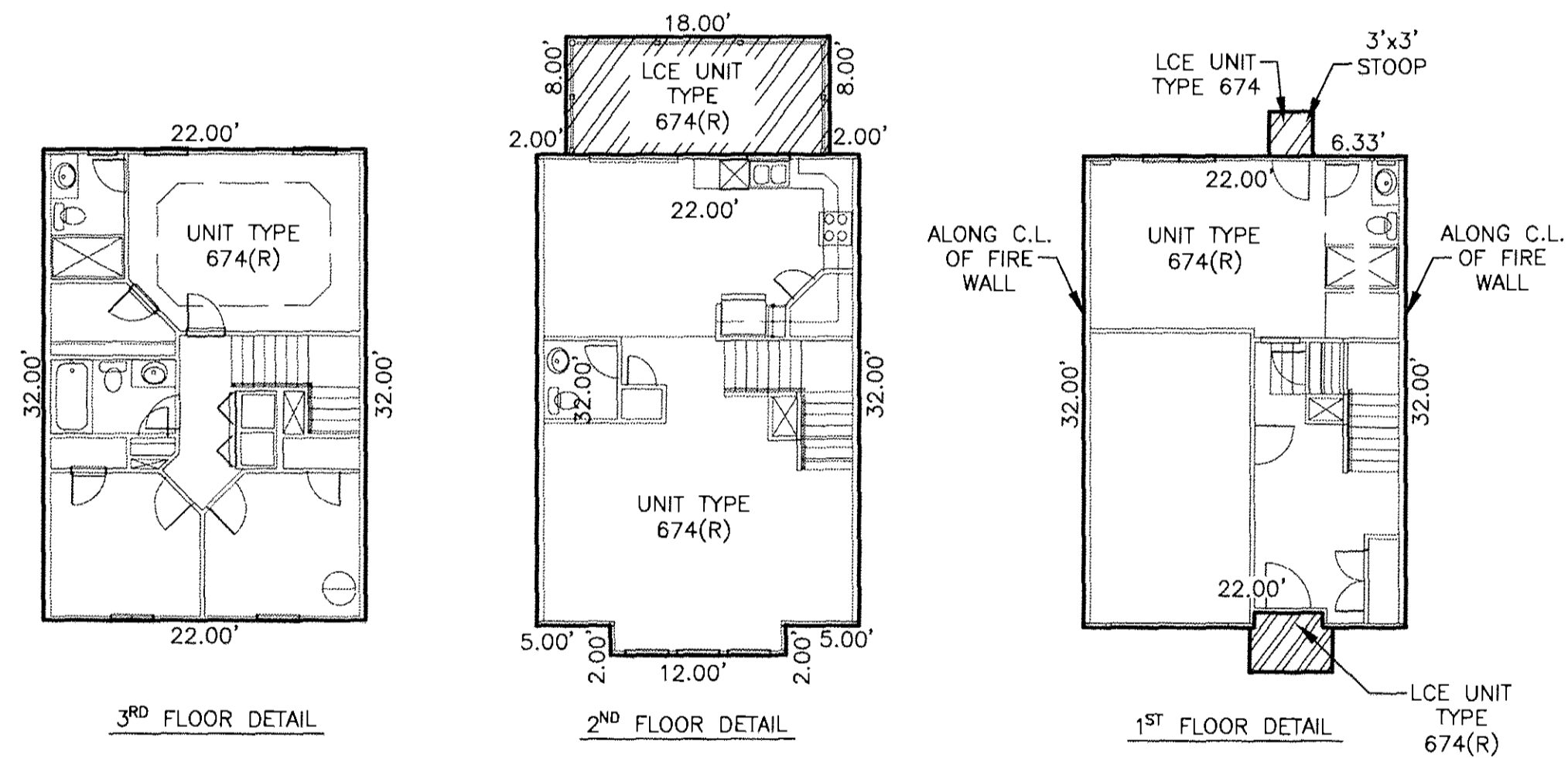
W. S. Felts
WILLIAM S. FELTS LIC. #3149
05/13/16
DATE



UNIT TYPE 674



LandTech Resources, Inc.
Engineering & Surveying Consultants
3925 Midlands Road, Williamsburg, VA 23188
Phone: (757) 565-1677 Fax: (757) 565-0782
web: landtechresources.com



UNIT TYPE 674(R)

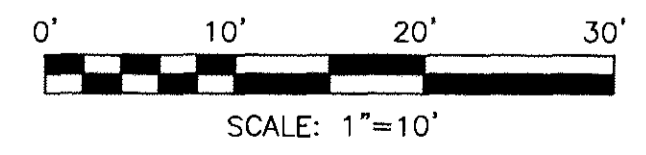
6 Large/Small-Plat(s) Recorded
herewith as # 160009184

City of Williamsburg & County of James City
Circuit Court: This PLAT was recorded on
5-23-2016
at 2:25 AM/PM, PB PG
Document # 160009184
MONA A. FOLEY, CLERK
Mona A. Foley, Clerk

PLAN OF
TOWNHOUSES
GOVERNOR'S GROVE AT FIVE FORKS
A CONDOMINIUM
LOCATED IN THE BERKELEY DISTRICT
JAMES CITY COUNTY, VIRGINIA
DATE: 05/13/2016 SCALE: 1" = 10' JOB# 06-460
SHEET: 2 OF 6



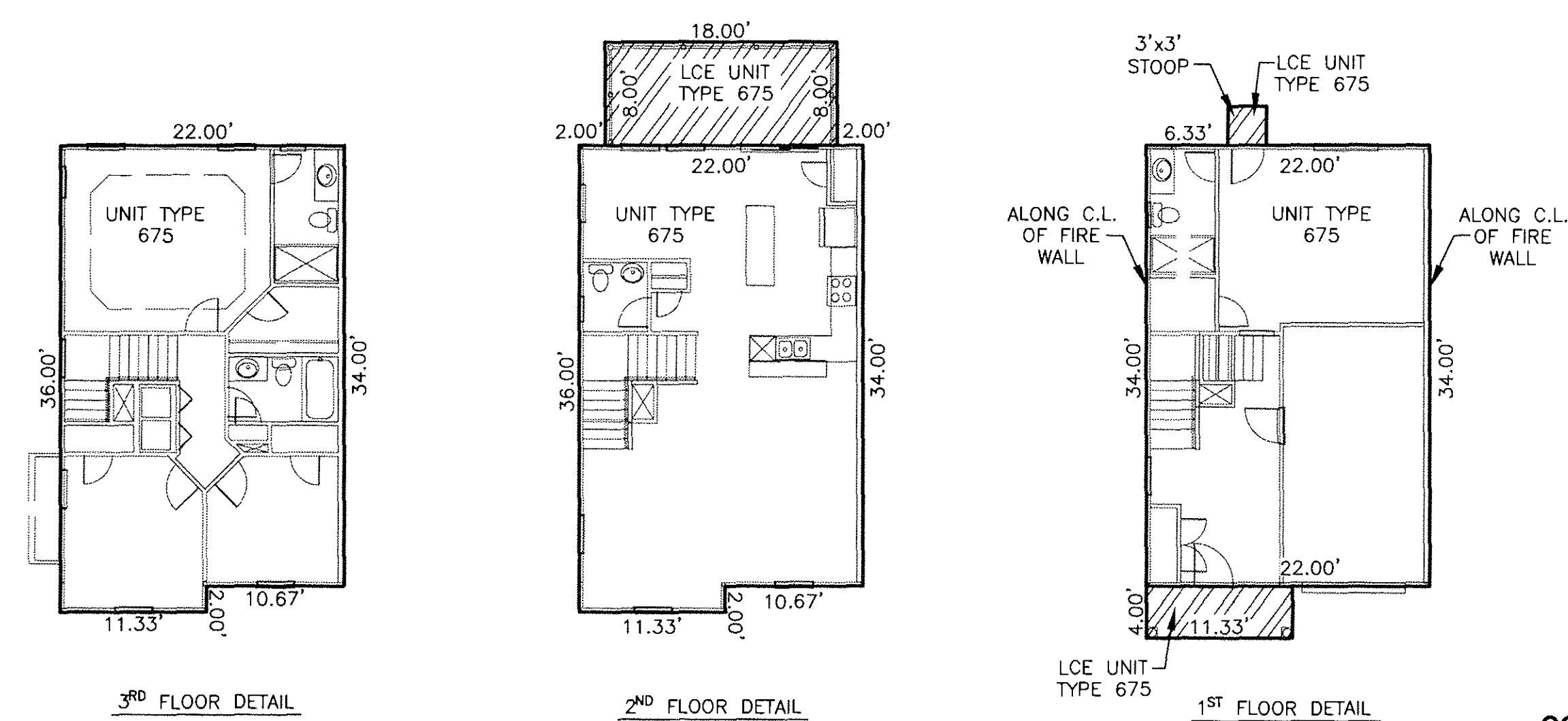
SURVEYORS CERTIFICATE
I HEREBY CERTIFY THAT THIS PLAT IS ACCURATE AND COMPLIES WITH THE PROVISIONS OF SECTION 55-79.58 (A) OF THE CODE OF VIRGINIA 1950 AS AMENDED AND I FURTHER CERTIFY THAT ALL UNITS DEPICTED HEREON HAVE BEEN SUBSTANTIALLY COMPLETE.



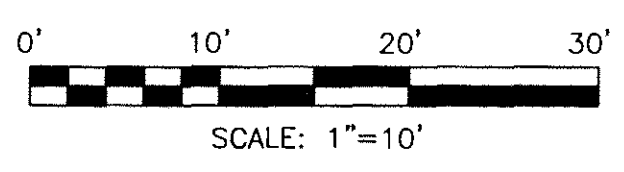
WILLIAM S. FELTS LIC. #3149
05/13/16
DATE

LandTech Resources, Inc.
Engineering & Surveying Consultants
3925 Midlands Road, Williamsburg, VA 23188
Phone: (757) 565-1677 Fax: (757) 565-0782
web: landtechresources.com

160009184



UNIT TYPE 675
LIMITED COMMON ELEMENT (LCE)



6 Large/Small Plat(s) Recorded herewith as # 160009184

City of Williamsburg & County of James City
Circuit Court: This PLAT was recorded on
5-23-2016
at 2:25 AM/PM, PB PG
Document # 160009184
MONA A. FOLEY, CLERK
Mona A. Foley, Clerk

PLAN OF TOWNHOUSES
GOVERNOR'S GROVE AT FIVE FORKS
A CONDOMINIUM
LOCATED IN THE BERKELEY DISTRICT
JAMES CITY COUNTY, VIRGINIA
DATE: 05/13/2016 SCALE: 1" = 10' JOB# 06-460
SHEET: 3 OF 6

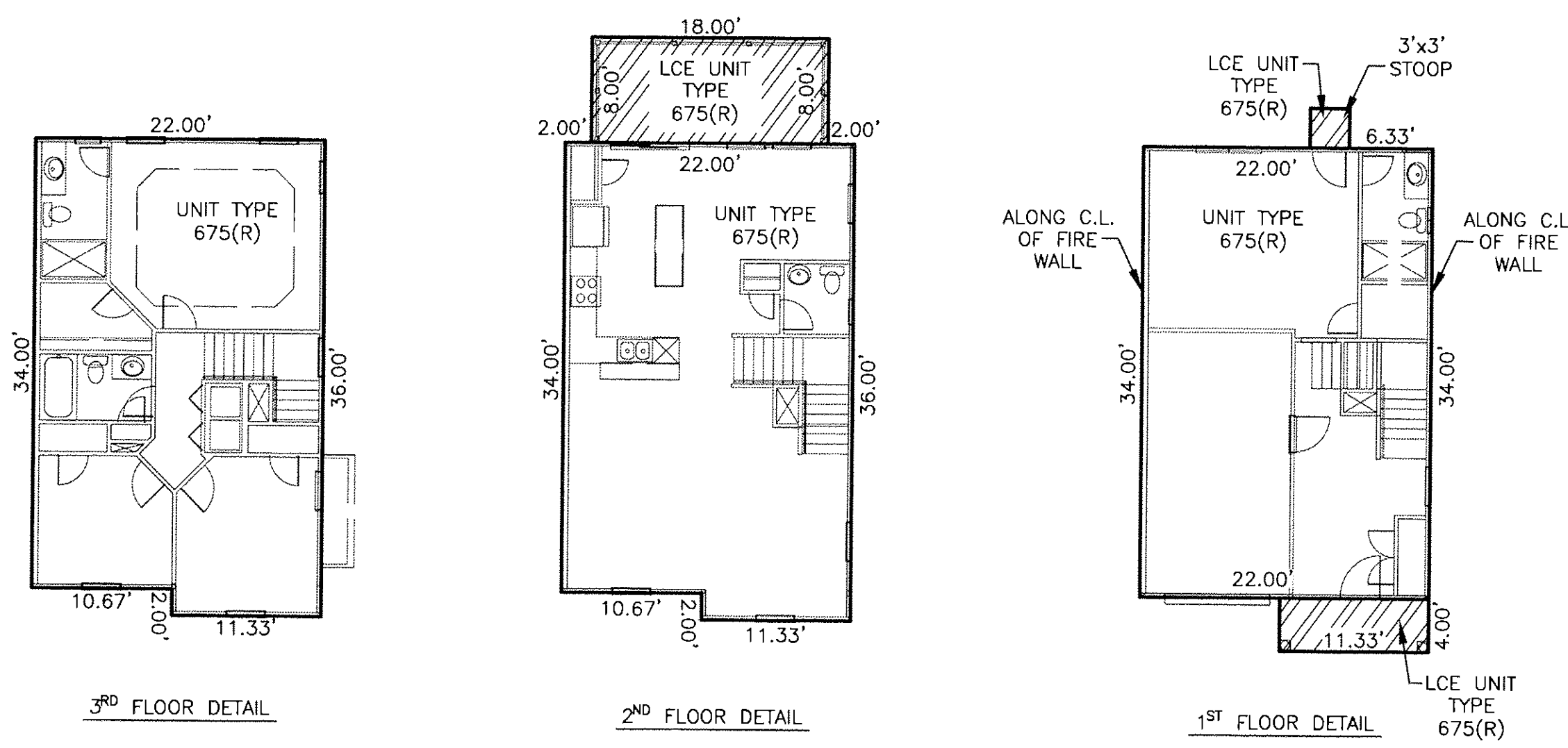
LandTech Resources, Inc.
Engineering & Surveying Consultants
3925 Midlands Road, Williamsburg, VA 23188
Phone: (757) 565-1677 Fax: (757) 565-0782
web: landtechresources.com



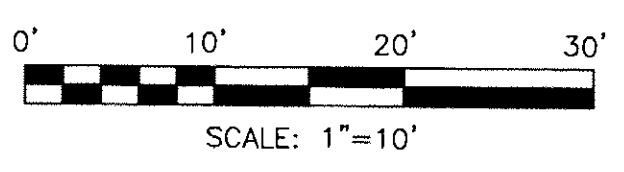
SURVEYORS CERTIFICATE
I HEREBY CERTIFY THAT THIS PLAT IS ACCURATE AND COMPLIES WITH THE PROVISIONS OF SECTION 55-79.58 (A) OF THE CODE OF VIRGINIA 1950 AS AMENDED AND I FURTHER CERTIFY THAT ALL UNITS DEPICTED HEREON HAVE BEEN SUBSTANTIALLY COMPLETE.

W. S. Felts
WILLIAM S. FELTS LIC. #3149
05/13/16
DATE

160009184



UNIT TYPE 675(R)
LIMITED COMMON ELEMENT (LCE)



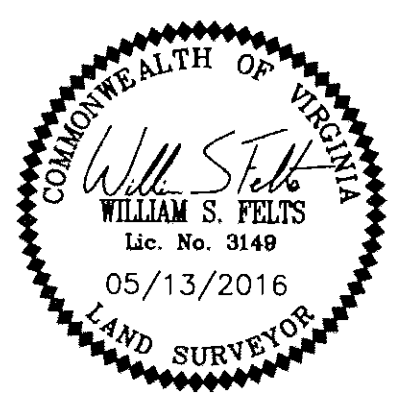
UNIT TYPE 675(R)

6 Large/Small Plat(s) Recorded
herewith as # 160009184

City of Williamsburg & County of James City
Circuit Court: This PLAT was recorded on
5-23-2016
at 2:25 AM/PM, PB PG
Document # 160009184
MONA A. FOLEY, CLERK
Mona A. Foley, Clerk

PLAN OF
TOWNHOUSES
GOVERNOR'S GROVE AT FIVE FORKS
A CONDOMINIUM
LOCATED IN THE BERKELEY DISTRICT
JAMES CITY COUNTY, VIRGINIA

DATE: 05/13/2016 SCALE: 1" = 10' JOB# 06-460
SHEET: 4 OF 6



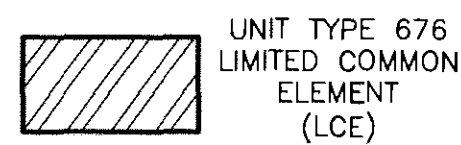
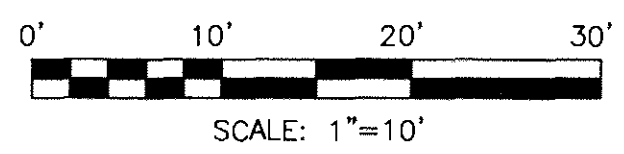
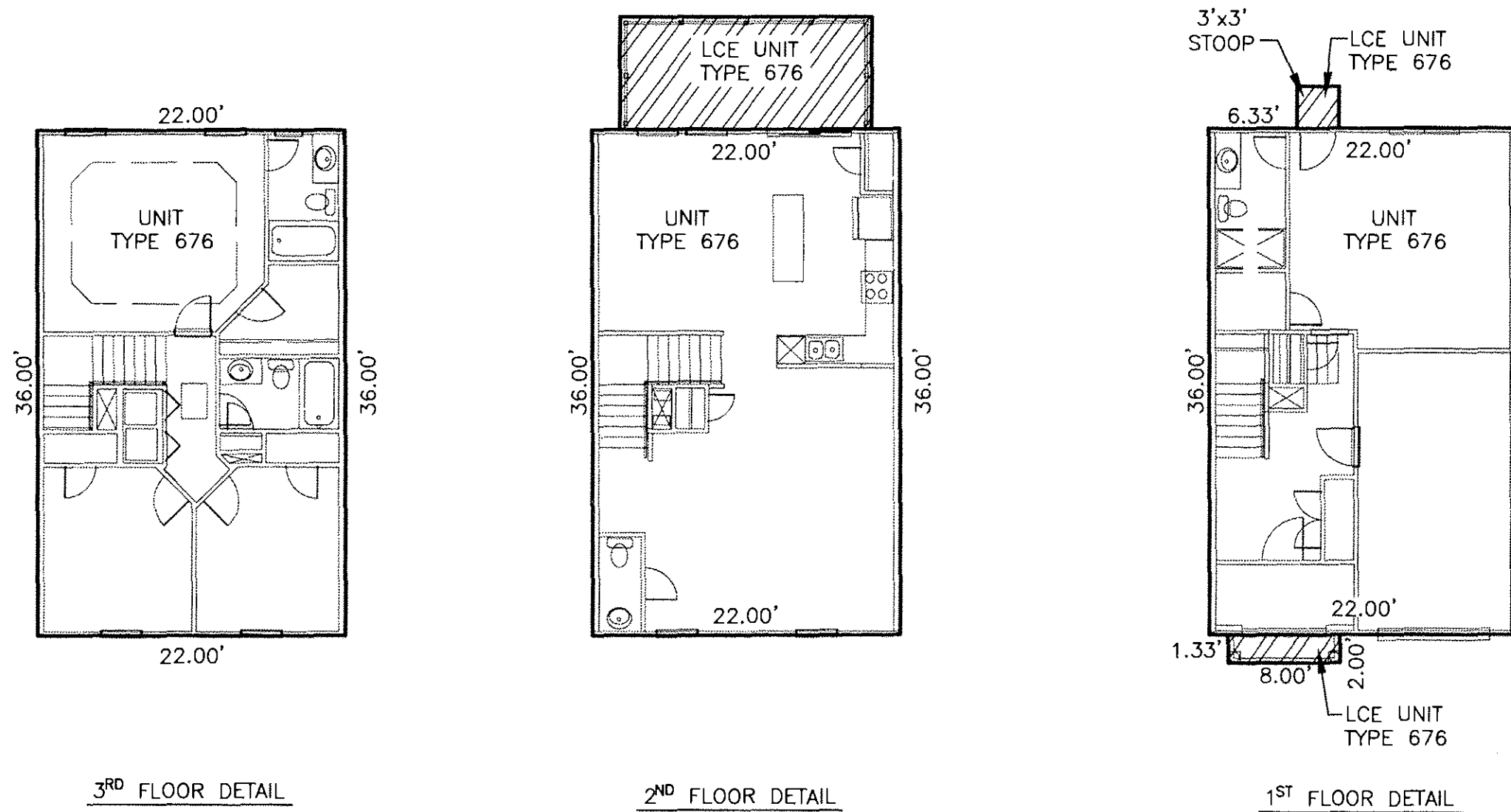
SURVEYORS CERTIFICATE

I HEREBY CERTIFY THAT THIS PLAT IS ACCURATE AND COMPLIES WITH THE PROVISIONS OF SECTION 55-79.58 (A) OF THE CODE OF VIRGINIA 1950 AS AMENDED AND I FURTHER CERTIFY THAT ALL UNITS DEPICTED HEREON HAVE BEEN SUBSTANTIALLY COMPLETE.

William S. Felts
WILLIAM S. FELTS LIC. #3149
05/13/16
DATE

LandTech Resources, Inc.
Engineering & Surveying Consultants
3925 Midlands Road, Williamsburg, VA 23188
Phone: (757) 565-1677 Fax: (757) 565-0782
web: landtechresources.com

160009184



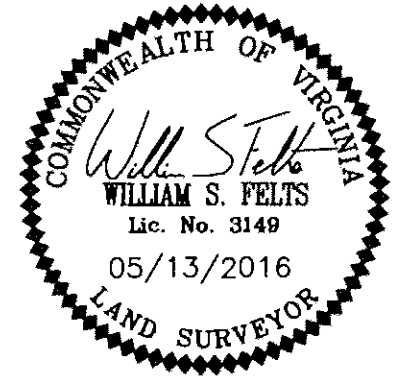
UNIT TYPE 676

6 Large/Small Plat(s) Recorded
herewith as # 160009184

City of Williamsburg & County of James City
Circuit Court: This PLAT was recorded on
5-23-2016
at 2:35 AM/PM, PB PG
Document # 160009184
MONA A. FOLEY, CLERK
Mona A. Foley, Clerk

PLAN OF TOWNHOUSES
GOVERNOR'S GROVE AT FIVE FORKS
A CONDOMINIUM
LOCATED IN THE BERKELEY DISTRICT
JAMES CITY COUNTY, VIRGINIA
DATE: 05/13/2016 SCALE: 1" = 10' JOB# 06-460
SHEET: 5 OF 6

LandTech Resources, Inc.
Engineering & Surveying Consultants
3925 Midlands Road, Williamsburg, VA 23188
Phone: (757) 565-1677 Fax: (757) 565-0782
web: landtechresources.com

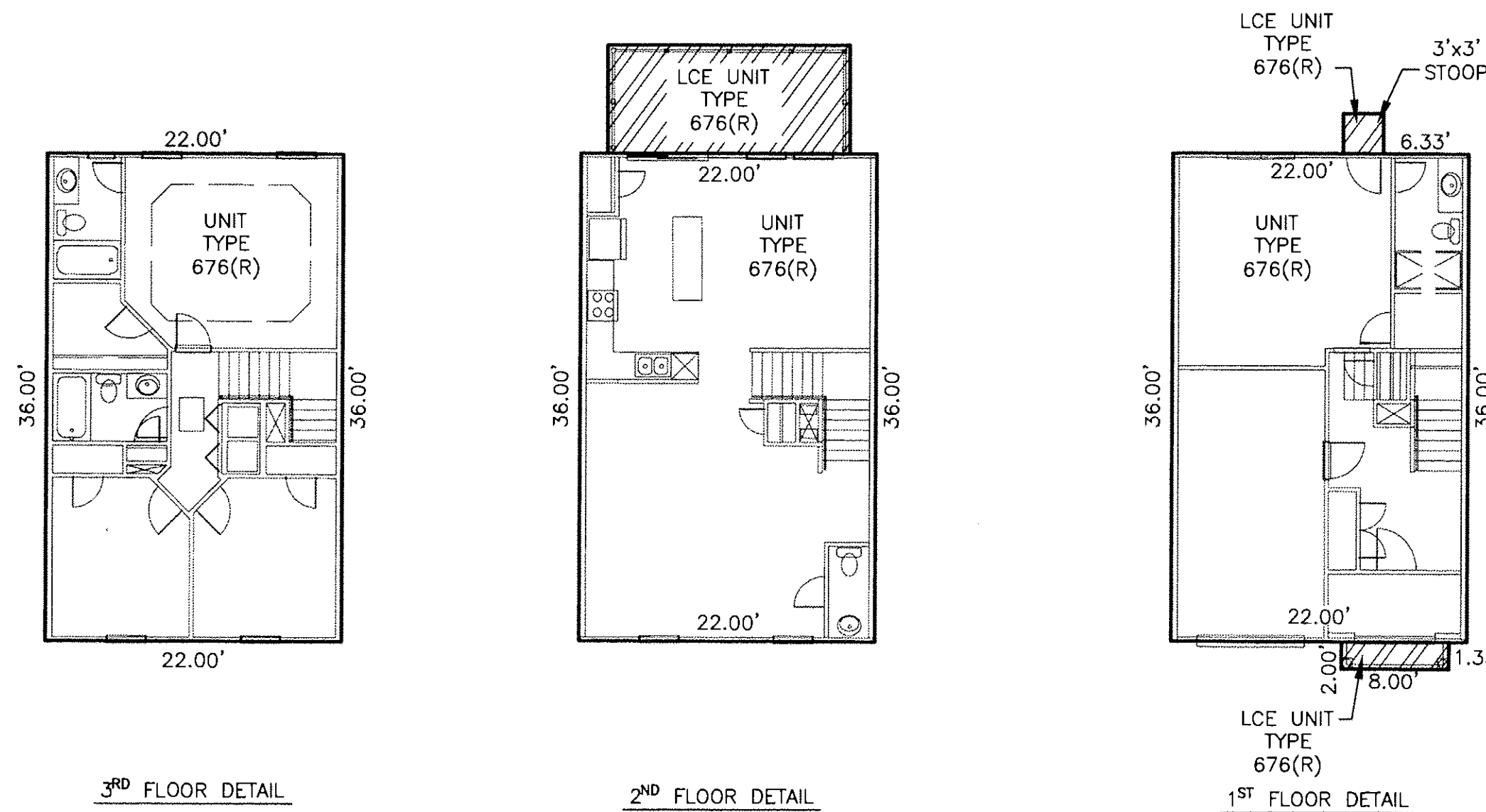


SURVEYORS CERTIFICATE

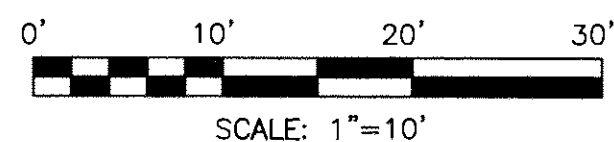
I HEREBY CERTIFY THAT THIS PLAT IS ACCURATE AND COMPLIES WITH THE PROVISIONS OF SECTION 55-79.58 (A) OF THE CODE OF VIRGINIA 1950 AS AMENDED AND I FURTHER CERTIFY THAT ALL UNITS DEPICTED HEREON HAVE BEEN SUBSTANTIALLY COMPLETE.

William S. Felts
WILLIAM S. FELTS LIC. #3149
05/13/16
DATE

160009184



UNIT TYPE
676(R) LIMITED
COMMON
ELEMENT
(LCE)



UNIT TYPE 676(R)

6 Large/Small Plat(s) Recorded
herewith as # 160009184

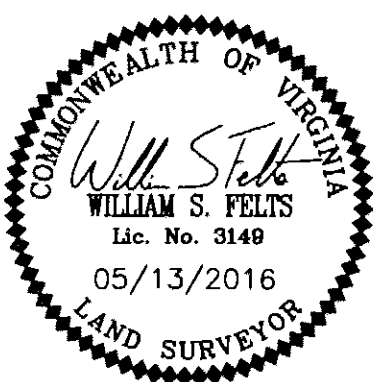
City of Williamsburg & County of James City
Circuit Court: This PLAT was recorded on
5-23-2016
at 2:25 AM/PM, PB PG
Document # 160009184
MONA A. FOLEY, CLERK
Mona A. Foley, Clerk

PLAN OF
TOWNHOUSES
GOVERNOR'S GROVE AT FIVE FORKS
A CONDOMINIUM
LOCATED IN THE BERKELEY DISTRICT
JAMES CITY COUNTY, VIRGINIA

DATE: 05/13/2016 SCALE: 1" = 10' JOB# 06-460
SHEET: 6 OF 6

LandTech
Resources, Inc.
Engineering & Surveying Consultants

3925 Midlands Road, Williamsburg, VA 23188
Phone: (757) 565-1677 Fax: (757) 565-0782
web: landtechresources.com



SURVEYORS CERTIFICATE

I HEREBY CERTIFY THAT THIS PLAT IS ACCURATE AND COMPLIES WITH THE PROVISIONS OF SECTION 55-79.58 (A) OF THE CODE OF VIRGINIA 1950 AS AMENDED AND I FURTHER CERTIFY THAT ALL UNITS DEPICTED HEREON HAVE BEEN SUBSTANTIALLY COMPLETE.

William S. Felts
WILLIAM S. FELTS LIC. #3149

05/13/16
DATE