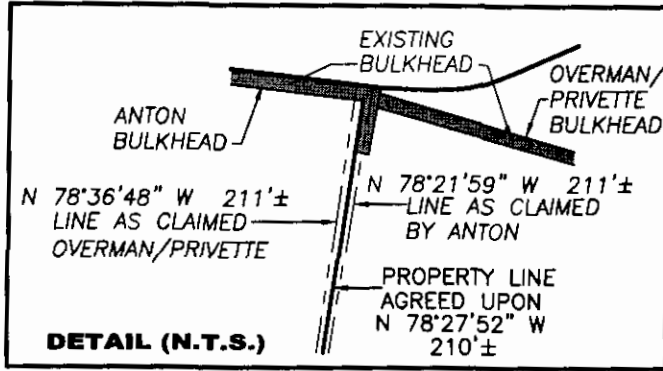
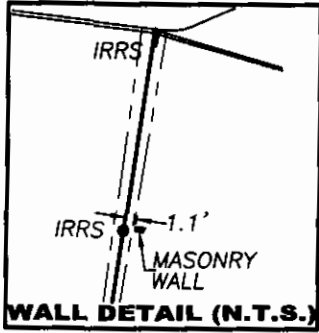


NOTES:

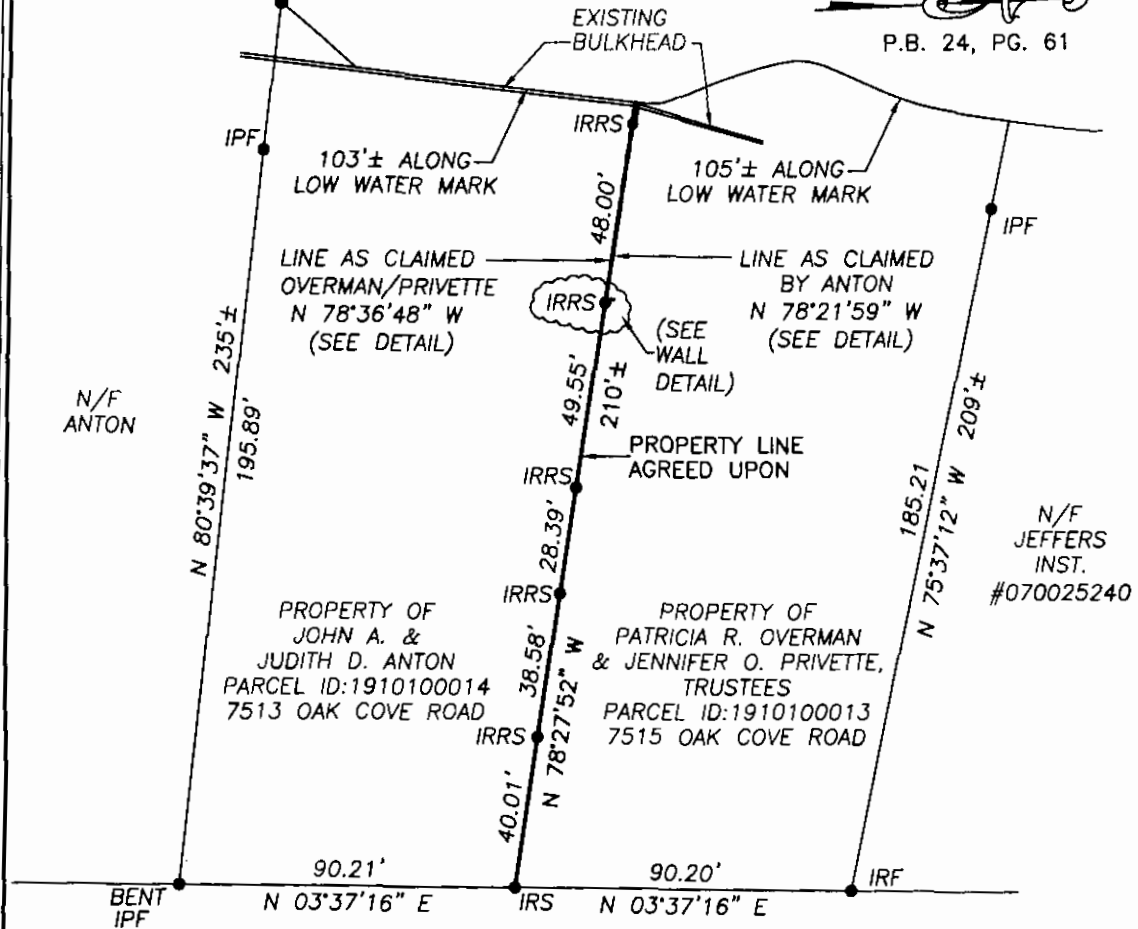
1. THIS PLAT WAS PRODUCED WITHOUT THE BENEFIT OF A TITLE REPORT.
2. IMPROVEMENTS ARE NOT SHOWN.



CHICKAHOMINY RIVER

RECORD MERIDIAN

P.B. 24, PG. 61



OAK COVE ROAD

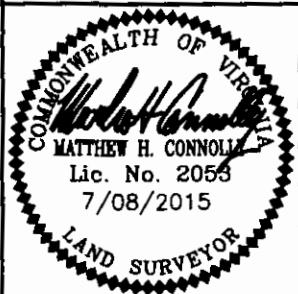
50' PRIVATE R/W
(P.B. 24/61)

LEGEND

- IRF = IRON ROD FOUND
- IPF = IRON PIPE FOUND
- IRS = IRON ROD SET
- IRRS = IRON ROD RE-SET ON NEW LINE

REVISED 5/6/15
REVISED 5/21/15
REVISED 7/08/15

SHEET 1 OF 2



REFERENCES:
P.B. 24, PG. 61

DATE: 04/23/15
SCALE: 1"=40'
JOB# 07-076
CAD File
PL AGREEMENT PLAT.dwg

PLAT TO ACCOMPANY
**DEED OF BOUNDARY LINE
ADJUSTMENT AND AGREEMENT**

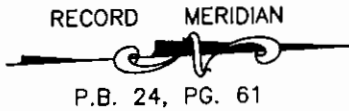
JAMES CITY COUNTY VIRGINIA

LandTech Resources, Inc.

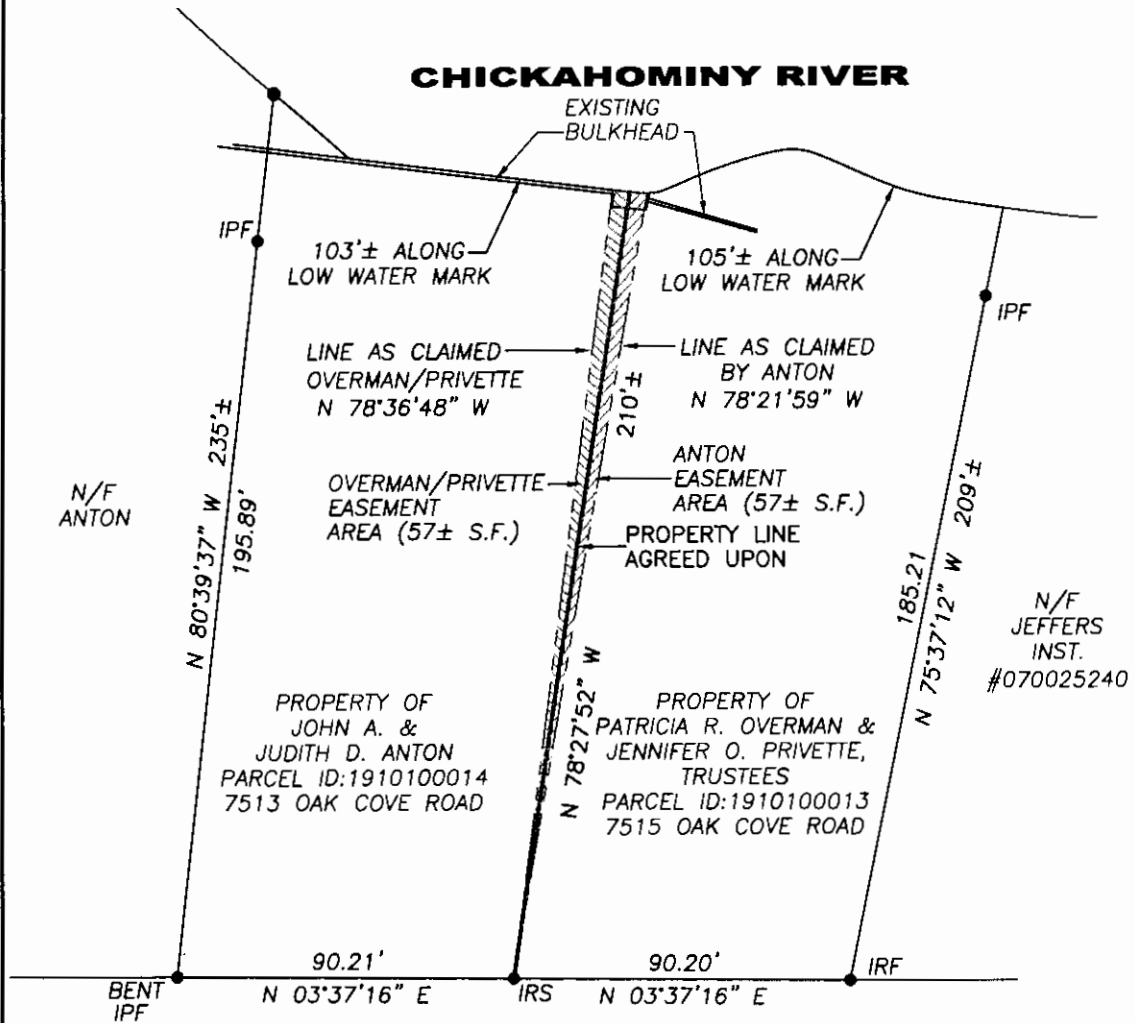
Surveying • GPS • Engineering
3925 Midlonds Road, Williamsburg, Virginia 23188
Telephone: 757-565-1677 Fax: 757-565-0782
Web: landtechresources.com

NOTES:

1. THIS PLAT WAS PRODUCED WITHOUT THE BENEFIT OF A TITLE REPORT.
2. IMPROVEMENTS ARE NOT SHOWN.



NOTE:
EXISTING CLAIMED PROPERTY
LINES ARE DRAWN AT AN
EXAGGERATED SCALE ON THIS
SHEET FOR CLARITY PURPOSES.



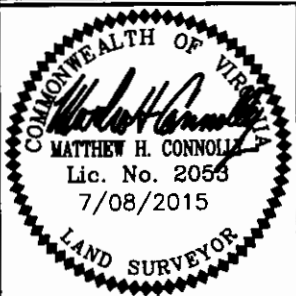
OAK COVE ROAD

50' PRIVATE R/W
 (P.B. 24/61)

REVISED 5/6/15
 REVISED 5/21/15
 REVISED 7/08/15

SHEET 2 OF 2

LEGEND
 IRF = IRON ROD FOUND
 IPF = IRON PIPE FOUND
 IRS = IRON ROD SET
 IRRS = IRON ROD RE-SET
 ON NEW LINE



REFERENCES:
 P.B. 24, PG. 61

DATE: 04/23/15
 SCALE: N/A
 JOB# 07-076
 CAD File
 PL AGREEMENT PLAT.dwg

PLAT TO ACCOMPANY
DEED OF BOUNDARY LINE
ADJUSTMENT AND AGREEMENT

JAMES CITY COUNTY VIRGINIA

LandTech Resources, Inc.
 Surveying • GPS • Engineering
 3925 Midlands Road, Williamsburg, Virginia 23188
 Telephone: 757-565-1677 Fax: 757-565-0782
 Web: landtechresources.com