

MATCH TO SHEET 1 OF 3

MATCH TO SHEET 3 OF 3

VIRGINIA ELECTRIC AND POWER CO.  
 SURRY - SKIFFES CREEK  
 PLAT TO ACCOMPANY AGREEMENT WITH  
 BASF CORPORATION

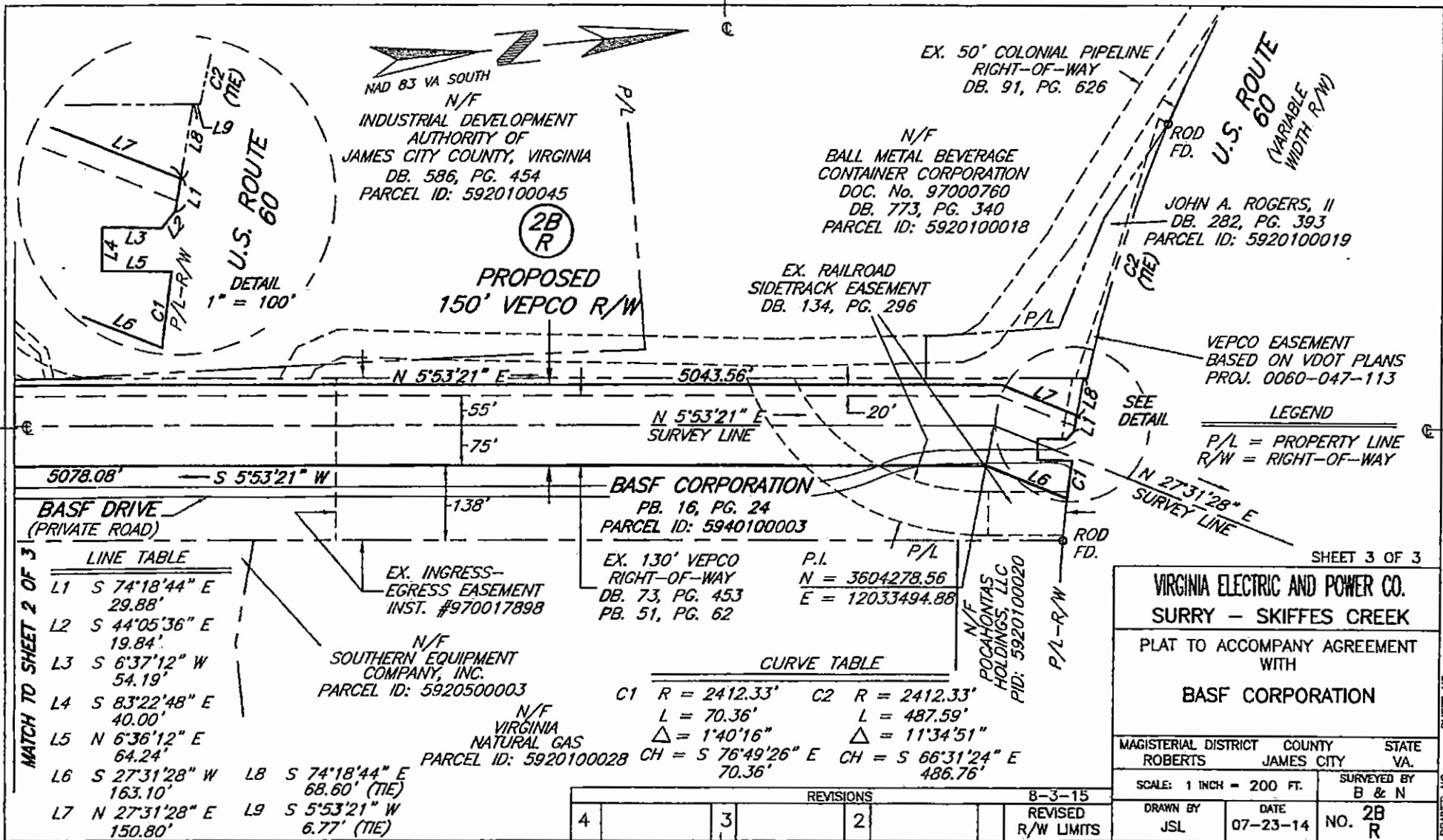
MAGISTERIAL DISTRICT COUNTY STATE  
 ROBERTS JAMES CITY VA.  
 SCALE: 1 INCH = 200 FT. SURVEYED BY B & N  
 DRAWN BY JSL DATE 07-23-14 NO. 2B R

LEGEND  
 P/L = PROPERTY LINE  
 R/W = RIGHT-OF-WAY

REVISIONS	DATE	BY
1	8-3-15	JSL
2		
3		
4		

SHEET NO. 2B R  
 DRAWER NO.

BURGESS & INPLE JAN. 50370



NAD 83 VA SOUTH  
N/F  
INDUSTRIAL DEVELOPMENT  
AUTHORITY OF  
JAMES CITY COUNTY, VIRGINIA  
DB. 586, PG. 454  
PARCEL ID: 5920100045

(2B)  
R

PROPOSED  
150' VEPCO R/W

EX. 50' COLONIAL PIPELINE  
RIGHT-OF-WAY  
DB. 91, PG. 626

N/F  
BALL METAL BEVERAGE  
CONTAINER CORPORATION  
DOC. No. 97000760  
DB. 773, PG. 340  
PARCEL ID: 5920100018

EX. RAILROAD  
SIDETRACK EASEMENT  
DB. 134, PG. 296

JOHN A. ROGERS, II  
DB. 282, PG. 393  
PARCEL ID: 5920100019

U.S. ROUTE  
60  
(VARIABLE  
WIDTH R/W)

VEPCO EASEMENT  
BASED ON VDOT PLANS  
PROJ. 0060-047-113

LEGEND

P/L = PROPERTY LINE  
R/W = RIGHT-OF-WAY

BASF CORPORATION  
PB. 16, PG. 24  
PARCEL ID: 5940100003

EX. 130' VEPCO  
RIGHT-OF-WAY  
DB. 73, PG. 453  
PB. 51, PG. 62

P.L.  
N = 3604278.56  
E = 12033494.88

N/F  
SOUTHERN EQUIPMENT  
COMPANY, INC.  
PARCEL ID: 5920500003

N/F  
VIRGINIA  
NATURAL GAS  
PARCEL ID: 5920100028

N/F  
POCAHONTAS  
HOLDINGS, LLC  
PID: 5920100020

CURVE TABLE

C1	R = 2412.33'	C2	R = 2412.33'
	L = 70.36'		L = 487.59'
	Δ = 1°40'16"		Δ = 11°34'51"
CH	= S 76°49'26" E	CH	= S 66°31'24" E
	70.36'		486.76'

REVISIONS

4	3	2	8-3-15
			REVISED R/W LIMITS

SHEET 3 OF 3

**VIRGINIA ELECTRIC AND POWER CO.**  
**SURRY - SKIFFES CREEK**

PLAT TO ACCOMPANY AGREEMENT  
WITH  
**BASF CORPORATION**

MAGISTERIAL DISTRICT ROBERTS	COUNTY JAMES CITY	STATE VA.
SCALE: 1 INCH = 200 FT.	SURVEYED BY B & N	
DRAWN BY JSL	DATE 07-23-14	NO. <b>2B</b> <b>R</b>

BURGESS & NIPLE J.N. 50370

MATCH TO SHEET 2 OF 3

DRAWER NO.

LINE TABLE

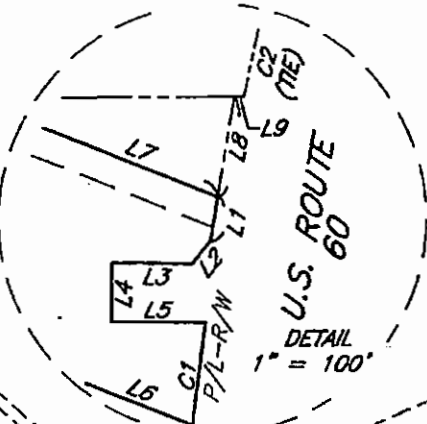
L1	S 74°18'44" E	29.88'
L2	S 44°05'36" E	19.84'
L3	S 6°37'12" W	54.19'
L4	S 83°22'48" E	40.00'
L5	N 6°36'12" E	64.24'
L6	S 27°31'28" W	163.10'
L7	N 27°31'28" E	150.80'
L8	S 74°18'44" E	68.60' (TIE)
L9	S 5°53'21" W	6.77' (TIE)

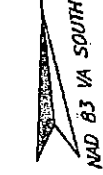
5078.08' — S 5°53'21" W

N 5°53'21" E  
SURVEY LINE

SEE  
DETAIL

N 27°31'28" E  
SURVEY LINE





2B  
R

PROPOSED  
150' VEPCO R/W

**BASF CORPORATION**  
PB. 16, PG. 24  
PARCEL ID: 5940100003

[DOW CHEMICAL COMPANY SUBSTATION  
EX. VEPCO SUBSTATION EASEMENT  
DB. 73, PG. 453

EX. 130' VEPCO RIGHT-OF-WAY  
DB. 73, PG. 453  
PB. 51, PG. 62

EXIST. SUBSTATION  
N 5°53'21" E 5043.56'

**BASF CORPORATION**  
PB. 51, PG. 65  
PARCEL ID: 5940100006

P.I.  
N = 3599244.45  
E = 12032975.61

LINE TABLE

- L10 N 61°16'12" W 81.38'
- L11 N 61°16'12" W 81.38'
- L12 S 5°53'21" W 18.38' (TIE)
- L13 S 80°17'26" W 185.62' (TIE)

LEGEND

- P/L = PROPERTY LINE
- R/W = RIGHT-OF-WAY

AREA = 17.91 ACRES

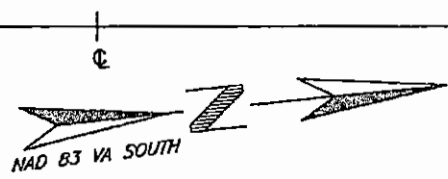
4	3	2	8-3-15
REVISED R/W LIMITS			

MAGISTERIAL DISTRICT ROBERTS		COUNTY JAMES CITY	STATE VA.
SCALE: 1 INCH = 200 FT.		SURVEYED BY B & N	
DRAWN BY JSL		DATE 07-23-14	NO. 2B R
SHEET 1 OF 3			
VIRGINIA ELECTRIC AND POWER CO. SURRY - SKIFFES CREEK PLAT TO ACCOMPANY AGREEMENT WITH <b>BASF CORPORATION</b>			

MATCH TO SHEET 2 OF 3

DRAWER NO. SHEET NO.

BURGESS & NIPLE J.N. 50570



N/F  
INDUSTRIAL DEVELOPMENT  
AUTHORITY OF  
JAMES CITY COUNTY, VIRGINIA  
DB. 586, PG. 454  
PARCEL ID: 5920100045

BASF  
CORPORATION  
PB. 16, PG. 24  
PARCEL ID: 5940100003

EX. 50' COLONIAL PIPELINE  
RIGHT-OF-WAY  
DB. 91, PG. 626

15' PERMANENT  
UTILITY EASEMENT  
PB. 67, PG. 58-60

EX. 40' VEPCO  
PIPELINE EASEMENT  
DB. 76, PG. 77

STONE  
FD.

20' | N 5°53'21" E → 5043.56'

SURVEY LINE N 5°53'21" E →

5078.08' — S 5°53'21" W

(2B)  
R  
PROPOSED  
150' VEPCO R/W

EX. 130' VEPCO  
RIGHT-OF-WAY  
DB. 73, PG. 453  
PB. 51, PG. 62

N/F  
WTJD LLC  
PARCEL ID: 5920100029D

N/F  
BASF CORPORATION  
PARCEL ID: 5920100029A

BASF DRIVE  
(PRIVATE ROAD)

N/F  
JOE SHOUSE  
CONSTRUCTION CO.  
PARCEL ID: 5920100029

SHEET 2 OF 3

VIRGINIA ELECTRIC AND POWER CO.  
SURRY - SKIFFES CREEK

PLAT TO ACCOMPANY AGREEMENT  
WITH

BASF CORPORATION

LEGEND

P/L = PROPERTY LINE  
R/W = RIGHT-OF-WAY

REVISIONS		8-3-15	
4		3	REVISED R/W LIMITS
		2	

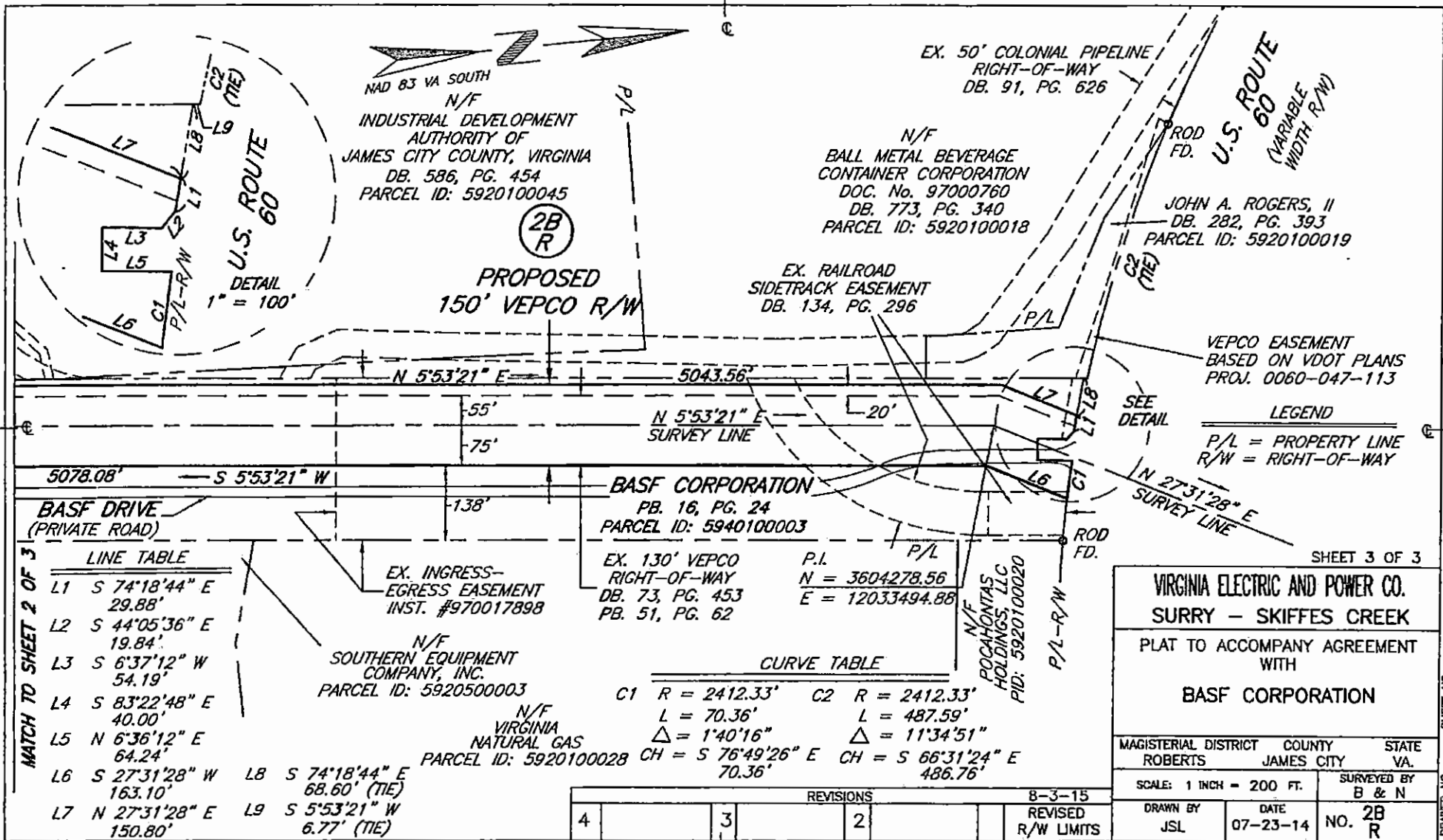
MAGISTERIAL DISTRICT	COUNTY	STATE
ROBERTS	JAMES CITY	VA.
SCALE: 1 INCH = 200 FT.	SURVEYED BY B & N	
DRAWN BY JSL	DATE 07-23-14	NO. 2B R

BURGESS & NIPLE J.N. 50370

MATCH TO SHEET 1 OF 3

MATCH TO SHEET 3 OF 3

DRAWER NO. SHEET NO.



NAD 83 VA SOUTH  
N/F  
INDUSTRIAL DEVELOPMENT  
AUTHORITY OF  
JAMES CITY COUNTY, VIRGINIA  
DB. 586, PG. 454  
PARCEL ID: 5920100045

(2B)  
R

PROPOSED  
150' VEPCO R/W

EX. 50' COLONIAL PIPELINE  
RIGHT-OF-WAY  
DB. 91, PG. 626

N/F  
BALL METAL BEVERAGE  
CONTAINER CORPORATION  
DOC. No. 97000760  
DB. 773, PG. 340  
PARCEL ID: 5920100018

EX. RAILROAD  
SIDETRACK EASEMENT  
DB. 134, PG. 296

JOHN A. ROGERS, II  
DB. 282, PG. 393  
PARCEL ID: 5920100019

U.S. ROUTE  
60  
(VARIABLE  
WIDTH R/W)

VEPCO EASEMENT  
BASED ON VDOT PLANS  
PROJ. 0060-047-113

LEGEND

P/L = PROPERTY LINE  
R/W = RIGHT-OF-WAY

MATCH TO SHEET 2 OF 3

LINE TABLE

L1	S 74°18'44" E	29.88'
L2	S 44°05'36" E	19.84'
L3	S 6°37'12" W	54.19'
L4	S 83°22'48" E	40.00'
L5	N 6°36'12" E	64.24'
L6	S 27°31'28" W	163.10'
L7	N 27°31'28" E	150.80'
L8	S 74°18'44" E	68.60' (TIE)
L9	S 5°53'21" W	6.77' (TIE)

N/F  
SOUTHERN EQUIPMENT  
COMPANY, INC.  
PARCEL ID: 5920500003

N/F  
VIRGINIA  
NATURAL GAS  
PARCEL ID: 5920100028

BASF CORPORATION  
PB. 16, PG. 24  
PARCEL ID: 5940100003

EX. 130' VEPCO  
RIGHT-OF-WAY  
DB. 73, PG. 453  
PB. 51, PG. 62

P.L.  
N = 3604278.56  
E = 12033494.88

CURVE TABLE

C1	R = 2412.33'	C2	R = 2412.33'
	L = 70.36'		L = 487.59'
	Δ = 1°40'16"		Δ = 11°34'51"
CH	= S 76°49'26" E	70.36'	CH = S 66°31'24" E
			486.76'

REVISIONS

4	3	2	8-3-15
			REVISED R/W LIMITS

SHEET 3 OF 3

VIRGINIA ELECTRIC AND POWER CO.  
SURRY - SKIFFES CREEK

PLAT TO ACCOMPANY AGREEMENT  
WITH

BASF CORPORATION

MAGISTERIAL DISTRICT COUNTY STATE  
ROBERTS JAMES CITY VA.

SCALE: 1 INCH = 200 FT.

SURVEYED BY  
B & N

DRAWN BY  
JSL

DATE  
07-23-14

NO. 2B  
R

BURGESS & NIPLE J.N. 50370

DRAWER NO.

NAD 83 VA SOUTH

**BASF CORPORATION**  
 PB. 16, PG. 24  
 PARCEL ID: 5940100003

**DOW CHEMICAL COMPANY SUBSTATION**  
 EX. VEPCO SUBSTATION EASEMENT  
 DB. 73, PG. 453

**2B R**  
**PROPOSED 150' VEPCO R/W**

EX. 130' VEPCO RIGHT-OF-WAY  
 DB. 73, PG. 453  
 PB. 51, PG. 62

EXIST. SUBSTATION  
 N 5°53'21" E 5043.56'

SURVEY LINE  
 -55'  
 -75'

P.I.  
 N = 3599244.45  
 E = 12032975.61

**BASF CORPORATION**  
 PB. 51, PG. 65  
 PARCEL ID: 5940100006

SHEET 1 OF 3  
**VIRGINIA ELECTRIC AND POWER CO.**  
**SURRY - SKIFFES CREEK**  
 PLAT TO ACCOMPANY AGREEMENT WITH  
**BASF CORPORATION**

MAGISTERIAL DISTRICT COUNTY STATE  
 ROBERTS JAMES CITY VA.

SCALE: 1 INCH = 200 FT. SURVEYED BY B & N

DRAWN BY JSL DATE 07-23-14 NO. 2B R

BURGESS & NIPLE J.N. 50370

MATCH TO SHEET 2 OF 3

DRAWER NO. SHEET NO.

LINE TABLE

L10	N 61°16'12" W	81.38'
L11	N 61°16'12" W	81.38'
L12	S 5°53'21" W	18.38' (TIE)
L13	S 80°17'26" W	185.62' (TIE)

LEGEND

P/L = PROPERTY LINE  
 R/W = RIGHT-OF-WAY

**AREA = 17.91 ACRES**

REVISIONS		8-3-15
NO.	DESCRIPTION	DATE
4		REVISED R/W LIMITS
3		
2		