

BASF CORPORATION
 PB. 16, PG. 24
 PARCEL ID: 5940100003

AREA = 11.68 ACRES

SHEET 1 OF 2

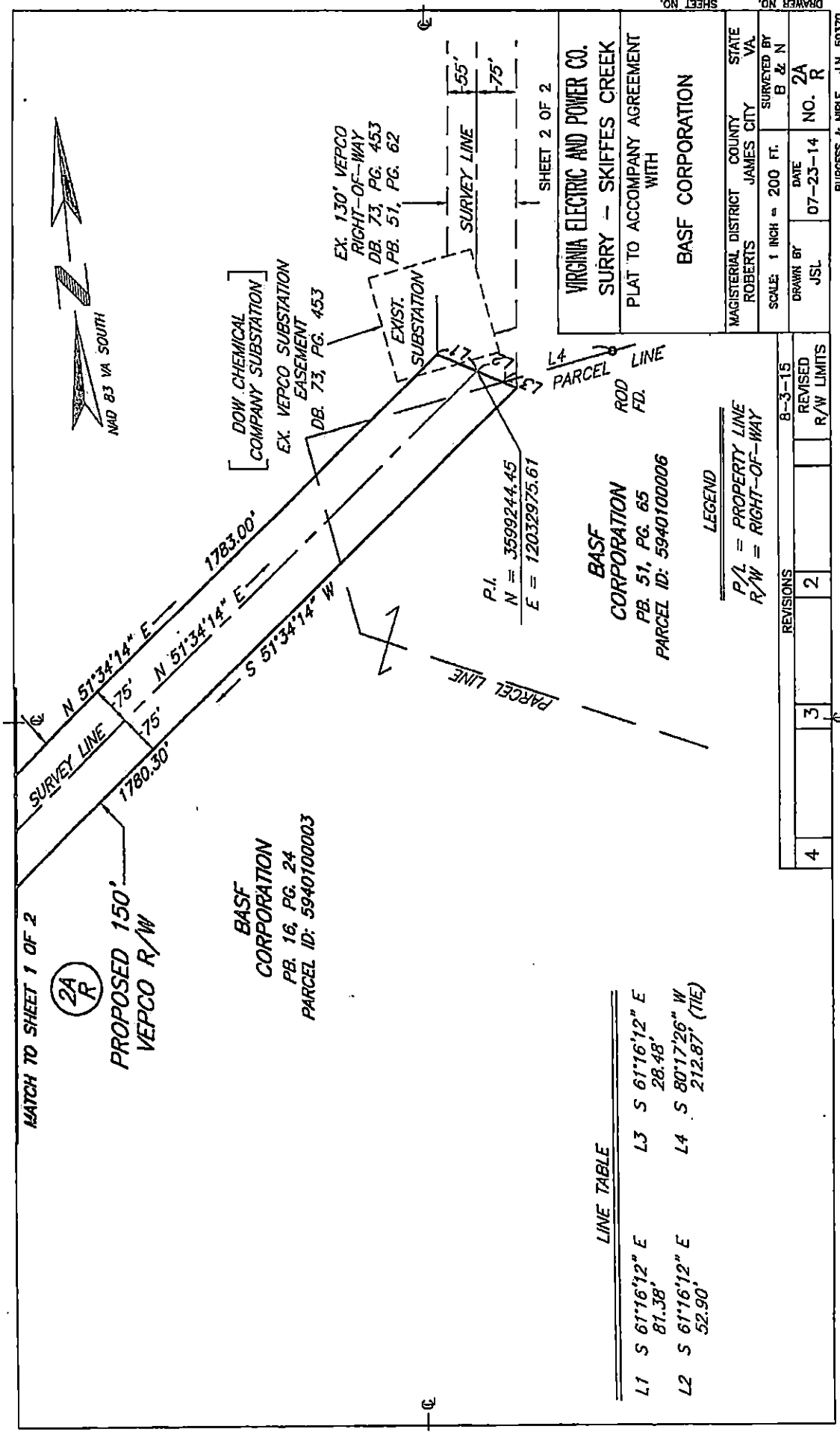
VIRGINIA ELECTRIC AND POWER CO.		MAGISTERIAL DISTRICT	COUNTY	CITY	STATE
SURRY - SKIFFES CREEK		ROBERTS	JAMES	VA.	
PLAT TO ACCOMPANY AGREEMENT WITH		SCALE: 1 INCH = 200 FT.	SURVEYED BY		B & N
BASF CORPORATION		DRAWN BY	DATE	NO.	2A
		JSL	07-23-14	NO. R	

LEGEND
 P/L = PROPERTY LINE
 R/W = RIGHT-OF-WAY
 M.L.W. = MEAN LOW WATER

REVISIONS		8-3-15	
NO.	DESCRIPTION	DATE	BY
4			
3			
2			
1			

DRAWN NO. SHEET NO.

BURGESS & NIPLE J.N. 50370



LINE TABLE

L1	S 61°16'12" E	81.38'
L2	S 61°16'12" E	52.90'
L3	S 61°16'12" E	28.48'
L4	S 80°17'26" W	212.87' (TIE)

LEGEND
 P/L = PROPERTY LINE
 R/W = RIGHT-OF-WAY

4	3	2	8-3-15
			REVISED R/W LIMITS

VIRGINIA ELECTRIC AND POWER CO. SURRY - SKIFFES CREEK PLAT TO ACCOMPANY AGREEMENT WITH BASF CORPORATION	MAGISTERIAL DISTRICT ROBERTS	COUNTY JAMES CITY	STATE VA.
SCALE: 1 INCH = 200 FT.	DRAWN BY JSL	DATE 07-23-14	SURVEYED BY B & N
		NO. 2A	R

SHEET NO. DRAWER NO. BURGESS & NIPLÉ J.N. 50370