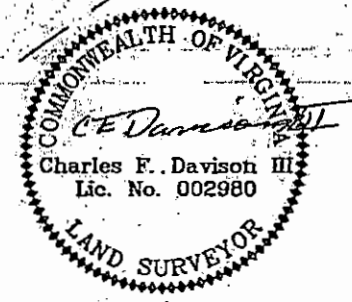




Y:\2013\1559-Landscap-Easement\DWG\1559-04-PLATE\PLATE.dwg | Plotted on 9/23/2013 8:30 AM | by Charles Davison



GPIN 0440200002  
2J INVESTMENTS, LLC  
AND BURGESS  
ENTERPRISES  
DOC. #050008809

EX-25 PEDESTRIAN  
PATHWAY AND  
UTILITY EASEMENT  
P.B. 90, PG. 9-11

EX-15 VIRGINIA  
POWER EASEMENT  
D.B.774, PG. 63

EX-CART AND  
IRRIGATION  
EASEMENT

FIELDSTONE PARKWAY  
120' RIGHT OF WAY  
P.B.90, PG. 9-11

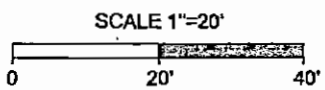
30' JCSA UTILITY  
EASEMENT  
5187 SQ. FT  
0.119 ACRES

30' JCSA UTILITY  
EASEMENT  
4154 SQ. FT  
0.095 ACRES

EX-VARIABLE WIDTH  
PERMANENT SLOPE  
EASEMENT  
P.B. 75, PG. 93-97

GPIN 0530100017  
THE ASSOCIATION AT  
STONEHOUSE INC.  
DOC. #060006909

JCC Subdivision Agent  
Approval Not Required  
PK 10/16/2016



COMPILED PLAT SHOWING  
**2J INVESTMENTS, LLC AND BURGESS  
ENTERPRISES**  
GPIN 0440200002 AND  
**THE ASSOCIATION AT STONEHOUSE, INC.,**  
GPIN 0530100017

District: Stonehouse	James City County, VA
DATE: September 1, 2013	SCALE: 1" = 20'
SHEET 1 OF 1	J.N.:34549
DRAWN BY: C. Davison	CHECK BY:

**TIMMONS GROUP**

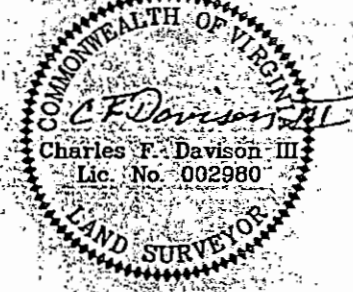
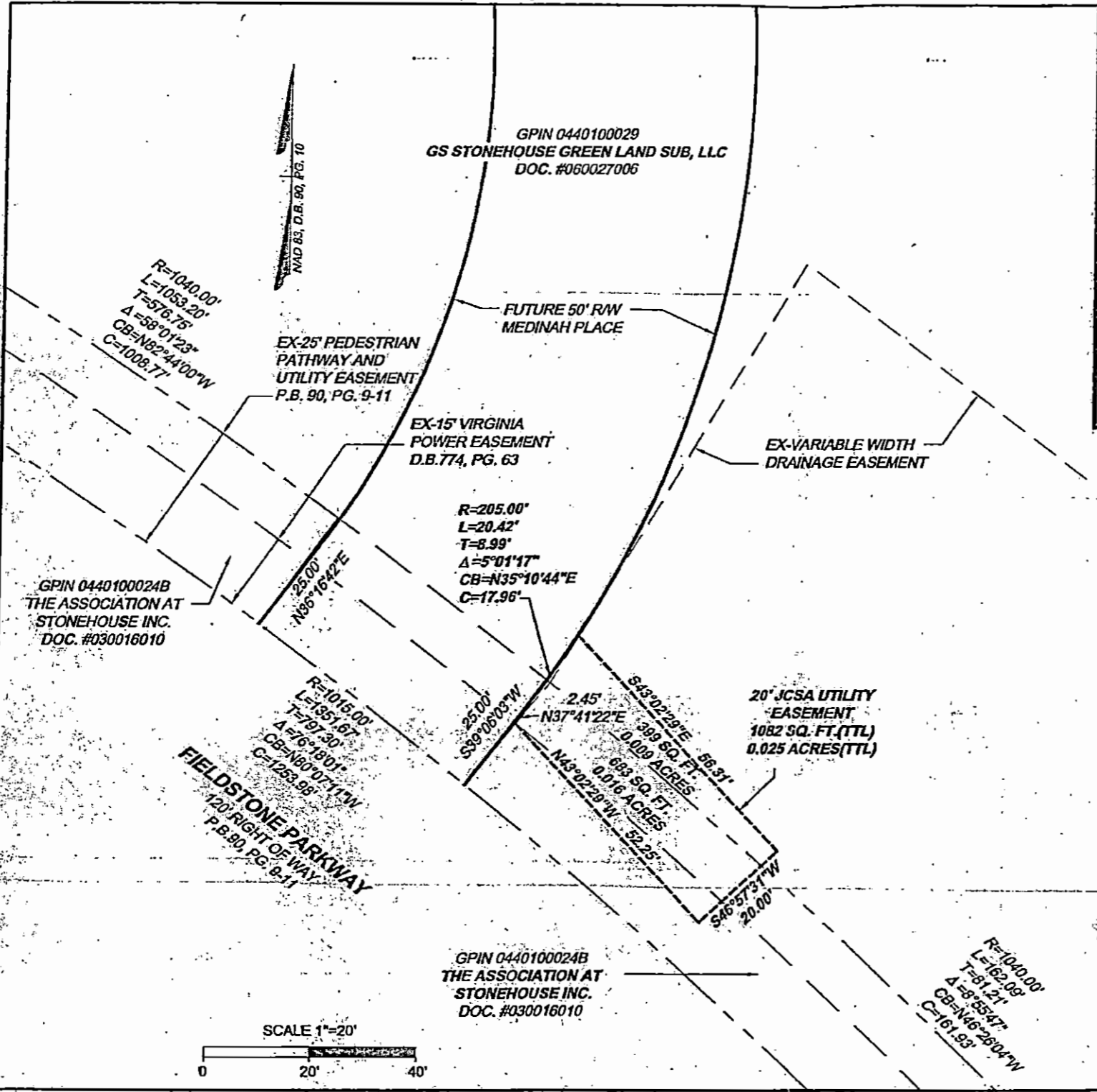
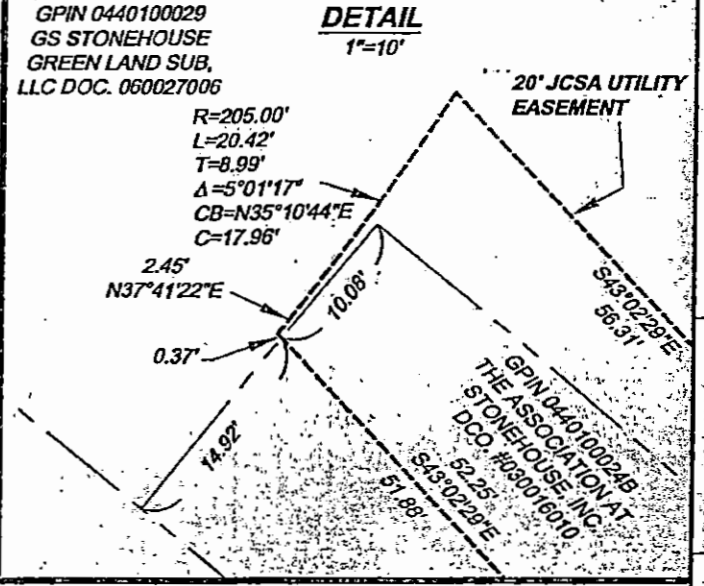
YOUR VIRGINIA AGENT THROUGH US

THIS DRAWING PREPARED AT THE  
CORPORATE OFFICE  
101 Boulder Parkway, Suite 300 | Richmond, VA 23275  
TEL 804.206.5500 FAX 804.500.0316 www.timmons.com

THIS DRAWING PREPARED AT THE  
CORPORATE OFFICE  
1001 Bessie's Parkway, Suite 200 | Richmond, VA 23215  
TEL: 804.300.6900 FAX: 804.360.1016 www.timmons.com

YOUR VISION ACTIVATED THROUGH OURS.  
www.timmons.com

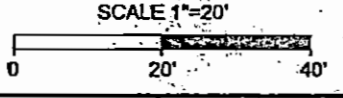
**TIMMONS GROUP**



JCC Subdivision Agent  
Approval Noted: *[Signature]*

COMPILED PLAT SHOWING  
**JCSA UTILITY EASEMENT ACROSS  
THE LANDS OF  
GS STONEHOUSE GREEN LAND SUB, LLC  
GPIN 0440100029 AND  
THE ASSOCIATION AT STONEHOUSE, INC.,  
GPIN 0440100024B**

District: Stonehouse	James City County, VA
DATE: September 1, 2013	SCALE: 1" = 20'
SHEET 1 OF 1	J.N.:34549
DRAWN BY: C. Davison	CHECK BY:



VDFO000544chwy February 2014 09:10:45 AM LandSurveyor-Examined-Virginia-PLATEST-001 Printed on 3/23/2014 1:50 PM by Charles Davison

THIS DRAWING PREPARED AT THE  
 COMPANY OFFICE  
 1001 Occoquia Parkway, Suite 200, Richmond, VA 23233  
 Tel: 804.330.6500 Fax: 804.330.1616 www.timmons.com

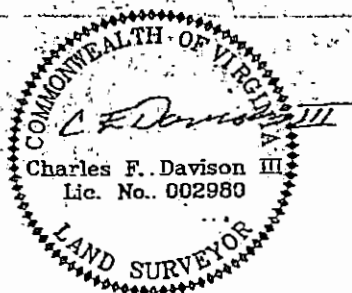
With Virginia registered professional title.

**TIMMONS GROUP**

JCC Subdivision Agent  
 Approval Not Required

*Handwritten initials*

COMPILED PLAT SHOWING  
**GS STONEHOUSE GREEN LAND SUB, LLC**  
**GPIN.0440100029 AND**  
**THE ASSOCIATION AT STONEHOUSE, INC.,**  
**GPIN 0530100024B**



District: Stonehouse	James City County, VA
DATE: September 1, 2013	SCALE: 1" = 30"
SHEET 1 OF 1	I.N.:34549
DRAWN BY: C. Davison	CHECK BY:

EX-CART AND IRRIGATION EASEMENT  
 P.B. 66, PG. 80-88

GPIN 0440100023  
 THE TRADITION GOLF CLUB  
 AT STONEHOUSE, LLC  
 DOC. #010010551

10' TEMPORARY CONSTRUCTION EASEMENT  
 3104 SQ. FT.  
 0.071 ACRES

30' JCSA UTILITY EASEMENT  
 750 SQ. FT.  
 0.017 ACRES

N36°28'47"W 4.97'

N54°58'19"E 216.68'

N80°50'56"E 91.08'

S49°17'48"W 60.08'

N54°58'19"E 214.13'

N80°50'56"E 98.84'

N36°28'47"W 5.04'

20' JCSA UTILITY EASEMENT  
 7285 SQ. FT.  
 0.167 ACRES

N80°50'56"E 105.52'

N49°17'48"E 57.21'

N54°58'19"E 208.78'

6.25'

EX-15 VIRGINIA POWER EASEMENT  
 D.B.774, PG. 63

GPIN 0440100029  
 GS STONEHOUSE GREEN LAND SUB, LLC  
 DOC. #060027006

GPIN 0440100033  
 2J INVESTMENTS, LLC AND BURGESS ENTERPRISES  
 DOC. #050008809

EX-25 PEDESTRIAN PATHWAY AND UTILITY EASEMENT  
 P.B. 90, PG. 9-11

EX-VARIABLE WIDTH PERMANENT SLOPE EASEMENT  
 P.B. 75, PG. 93-97

FIELDSTONE PARKWAY  
 120' RIGHT OF WAY  
 D.B. 90, PG. 9-11

GPIN 0440100024B  
 THE ASSOCIATION AT STONEHOUSE INC.  
 DOC. #030016010

N41°58'10"W 346.07'

109.88'

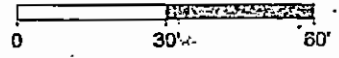
S41°58'10"E 346.07'

25.00'

S48°01'50"W

S32°33'53"W 347.45'

SCALE 1"=30'



I:\3450\3450\PLATE\PLATE\GNT.dwg | Plotted on 3/25/2014 11:17 PM | by Charles Davison