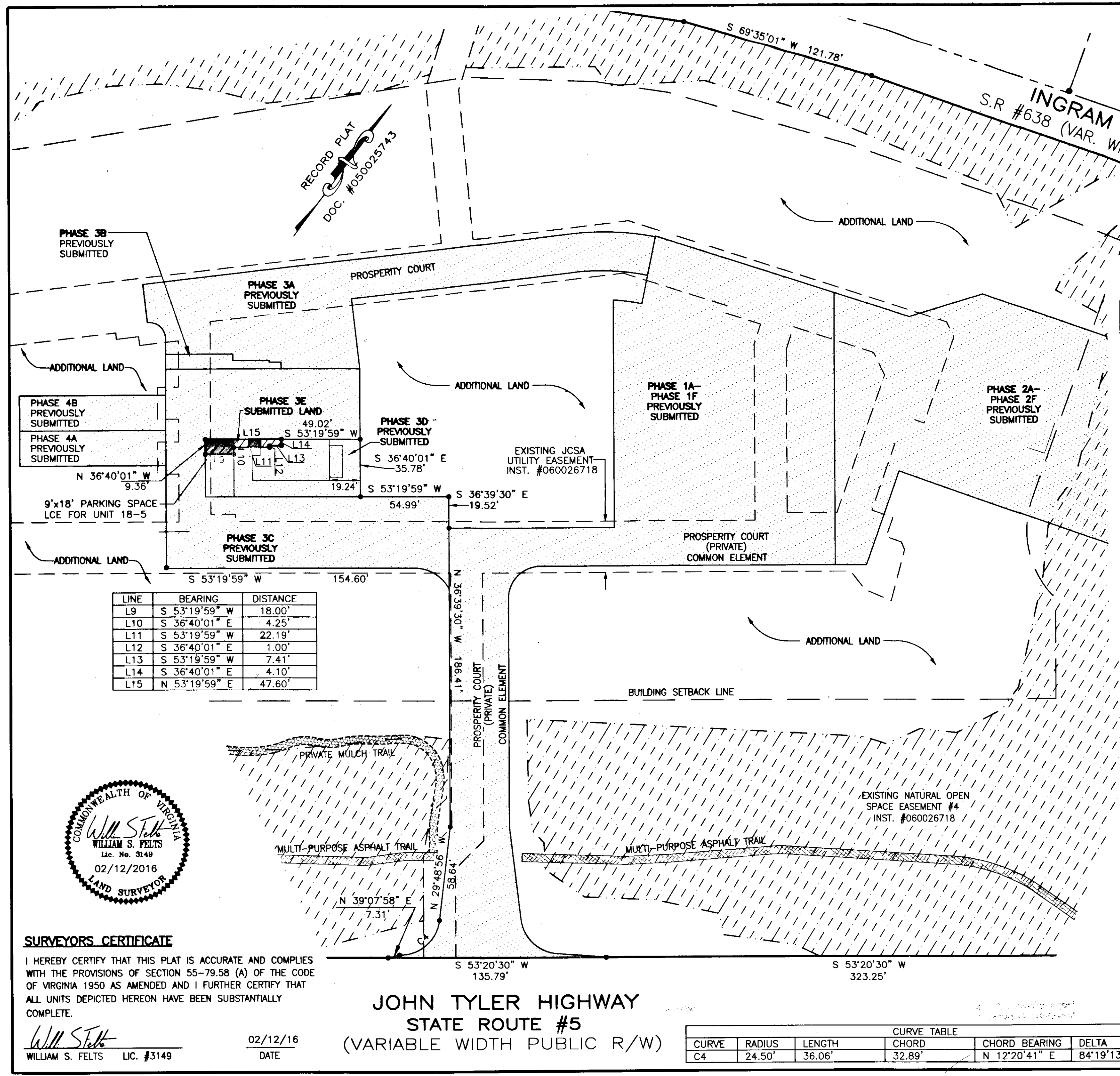


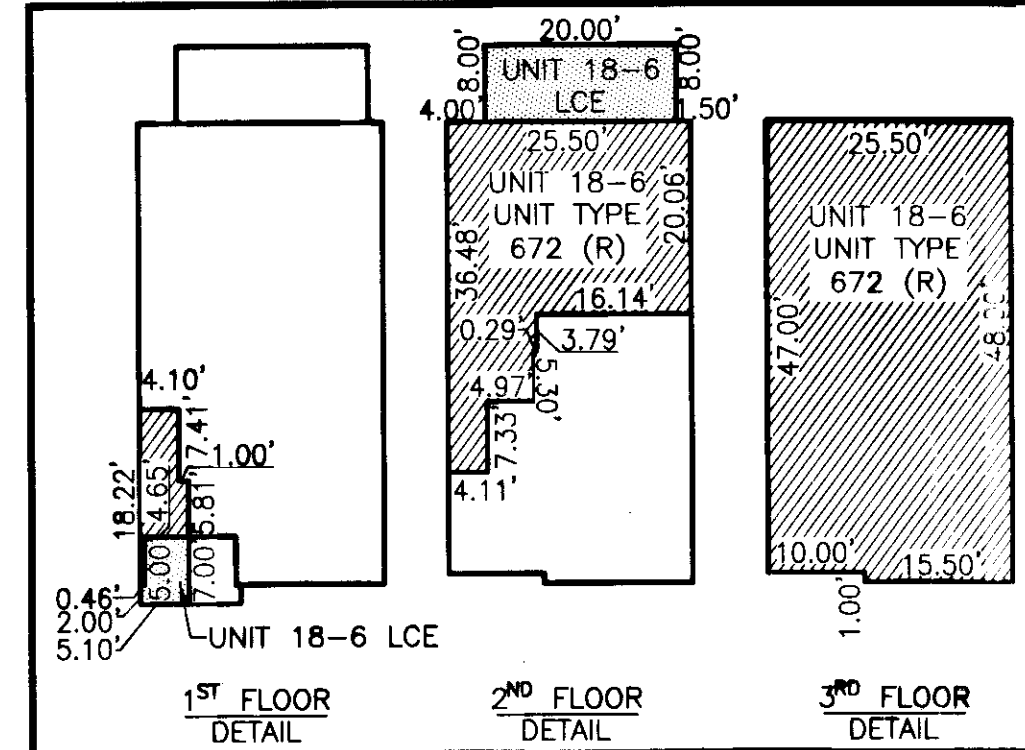
160003746

City of Williamsburg & County of James City
 Circuit Court: This PLAT was recorded on
 at 2:11 PM, PB PG
 Document # 160003746
 MONA A. FOLEY, CLERK
 Clerk

2 Large-Format Plats Recorded
 pursuant to S. 160003746



LINE	BEARING	DISTANCE
L9	S 53°19'59" W	18.00'
L10	S 36°40'01" E	4.25'
L11	S 53°19'59" W	22.19'
L12	S 36°40'01" E	1.00'
L13	S 53°19'59" W	7.41'
L14	S 36°40'01" E	4.10'
L15	N 53°19'59" E	47.60'

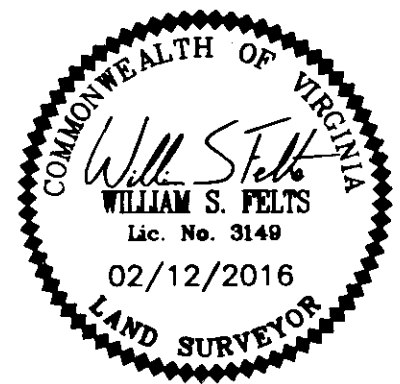


UNIT NUMBER	UNIT TYPE	STREET ADDRESS	PARCEL ID#
18-6	672 (R)	1806 PROSPERITY CT	4622101808

- INDICATES ADDITIONAL LAND
- INDICATES PREVIOUSLY SUBMITTED LAND
- SUBMITTED LAND
- LIMITED COMMON ELEMENT (LCE)

PLAT OF
 PHASE 3E
 GOVERNOR'S GROVE AT FIVE FORKS
 A CONDOMINIUM
 LOCATED IN THE BERKELEY DISTRICT
 JAMES CITY COUNTY, VIRGINIA
 DATE: 02/12/2016 SCALE: 1" = 40' JOB# 06-460
 SHEET: 2 OF 2

LandTech Resources, Inc.
 Engineering & Surveying Consultants
 3925 Midlands Road, Williamsburg, VA 23188
 Phone: (757) 565-1677 Fax: (757) 565-0782
 web: landtechresources.com



SURVEYORS CERTIFICATE
 I HEREBY CERTIFY THAT THIS PLAT IS ACCURATE AND COMPLIES WITH THE PROVISIONS OF SECTION 55-79.58 (A) OF THE CODE OF VIRGINIA 1950 AS AMENDED AND I FURTHER CERTIFY THAT ALL UNITS DEPICTED HEREON HAVE BEEN SUBSTANTIALLY COMPLETE.
 W.S. Felts
 WILLIAM S. FELTS LIC. #3149
 02/12/16
 DATE

JOHN TYLER HIGHWAY
 STATE ROUTE #5
 (VARIABLE WIDTH PUBLIC R/W)

CURVE TABLE					
CURVE	RADIUS	LENGTH	CHORD	CHORD BEARING	DELTA
C4	24.50'	36.06'	32.89'	N 12°20'41" E	84°19'13"