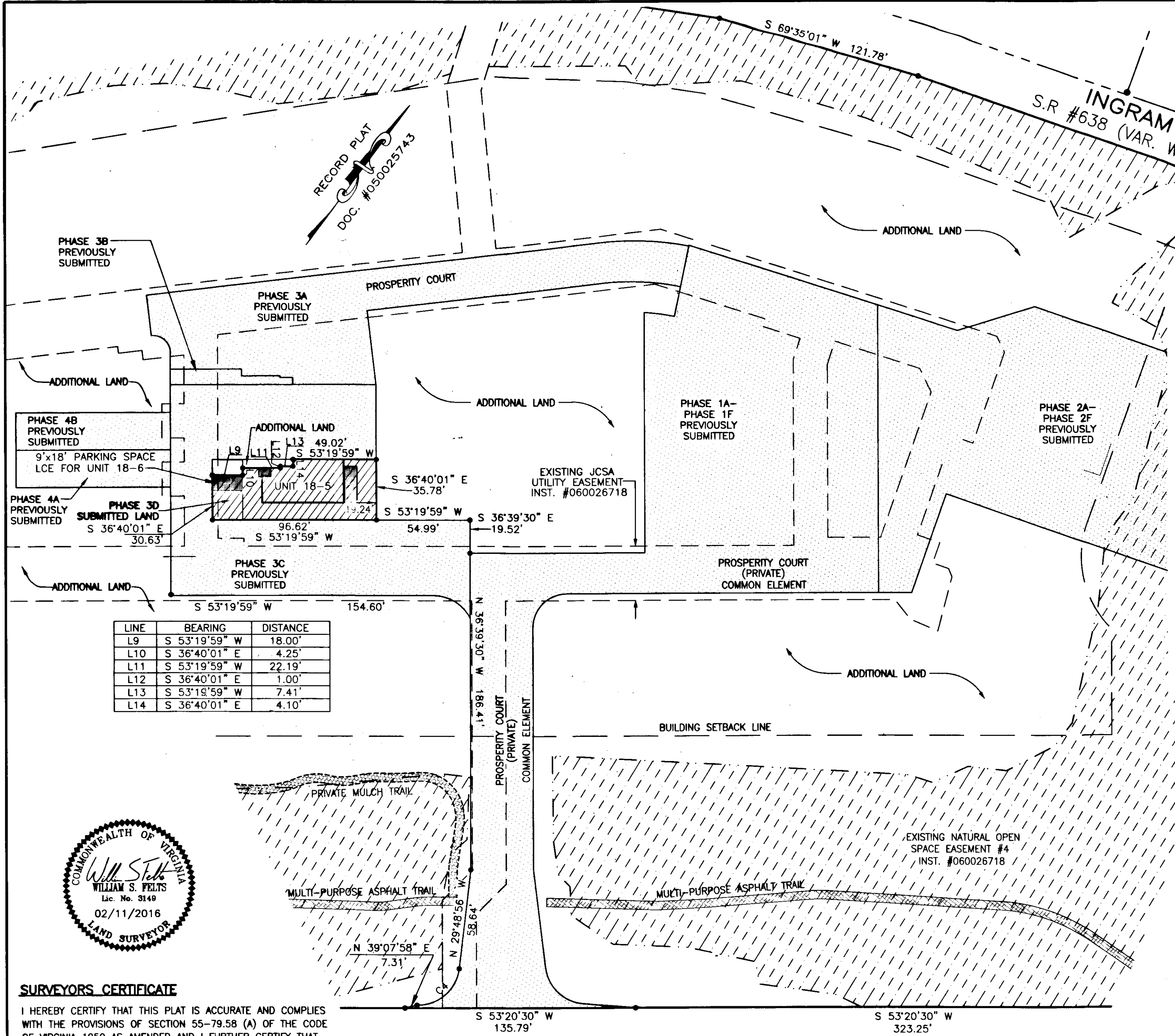


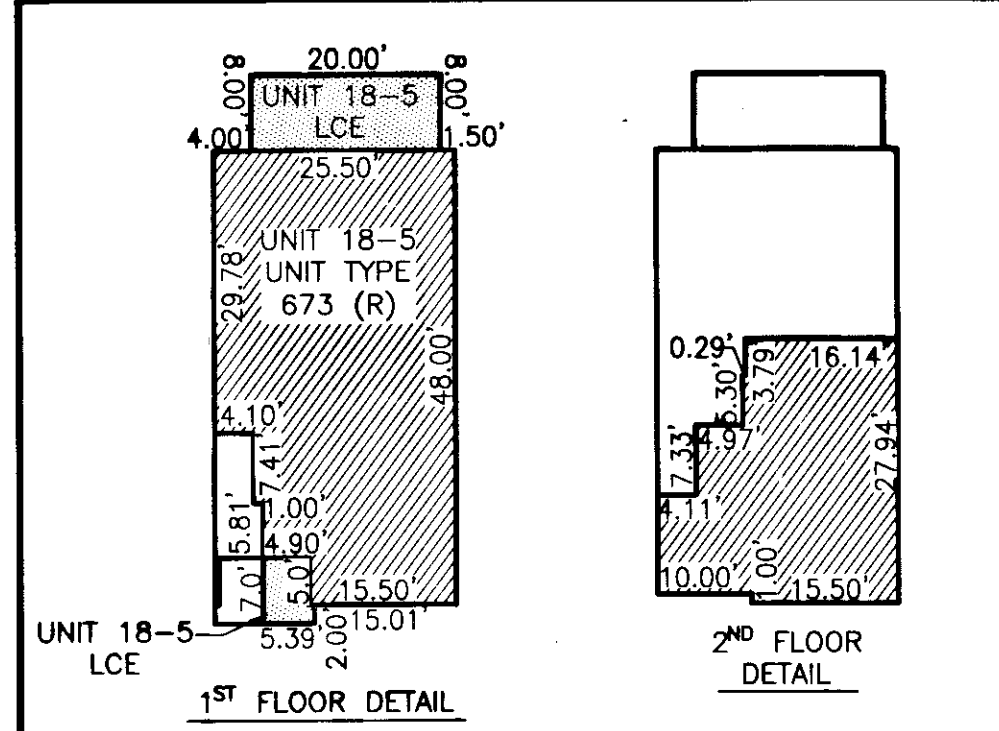
160003745

City of Williamsburg & County of James City  
 Circuit Court, This PLAT was recorded on  
 2-22-2016  
 at 1:44 AM/PM, PB PG  
 Document # 160003745  
 MONA A. FOLEY, CLERK  
 Clerk

2 Large/Small Plat(s) Recorded  
 herewith as # 160003745



LINE	BEARING	DISTANCE
L9	S 53°19'59" W	18.00'
L10	S 36°40'01" E	4.25'
L11	S 53°19'59" W	22.19'
L12	S 36°40'01" E	1.00'
L13	S 53°19'59" W	7.41'
L14	S 36°40'01" E	4.10'

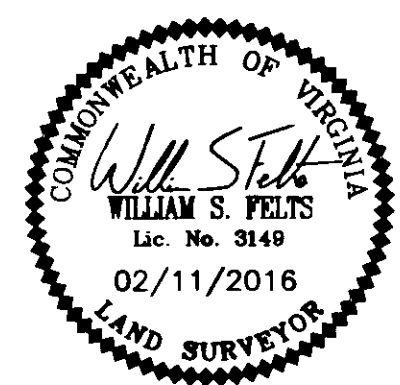


UNIT NUMBER	UNIT TYPE	STREET ADDRESS	PARCEL ID#
18-5	673 (R)	1805 PROSPERITY CT	4622101805

- INDICATES ADDITIONAL LAND
- INDICATES PREVIOUSLY SUBMITTED LAND
- SUBMITTED LAND
- LIMITED COMMON ELEMENT (LCE)

PLAT OF  
 PHASE 3D  
 GOVERNOR'S GROVE AT FIVE FORKS  
 A CONDOMINIUM  
 LOCATED IN THE BERKELEY DISTRICT  
 JAMES CITY COUNTY, VIRGINIA  
 DATE: 02/11/2016 SCALE: 1" = 40' JOB# 06-460  
 SHEET: 2 OF 2

**LandTech Resources, Inc.**  
 Engineering & Surveying Consultants  
 3925 Midlands Road, Williamsburg, VA 23188  
 Phone: (757) 565-1677 Fax: (757) 565-0782  
 web: landtechresources.com



**SURVEYORS CERTIFICATE**  
 I HEREBY CERTIFY THAT THIS PLAT IS ACCURATE AND COMPLIES WITH THE PROVISIONS OF SECTION 55-79.58 (A) OF THE CODE OF VIRGINIA 1950 AS AMENDED AND I FURTHER CERTIFY THAT ALL UNITS DEPICTED HEREON HAVE BEEN SUBSTANTIALLY COMPLETE.

W.S. Felts  
 WILLIAM S. FELTS LIC. #3149  
 DATE: 02/11/16

JOHN TYLER HIGHWAY  
 STATE ROUTE #5  
 (VARIABLE WIDTH PUBLIC R/W)

CURVE TABLE					
CURVE	RADIUS	LENGTH	CHORD	CHORD BEARING	DELTA
C4	24.50'	36.06'	32.89'	N 12°20'41" E	84°19'13"