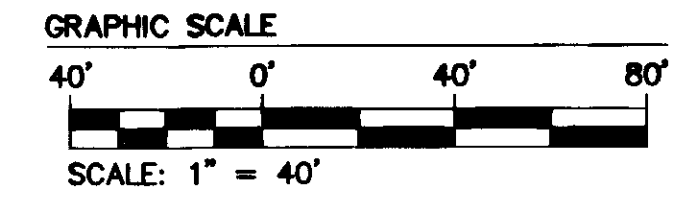
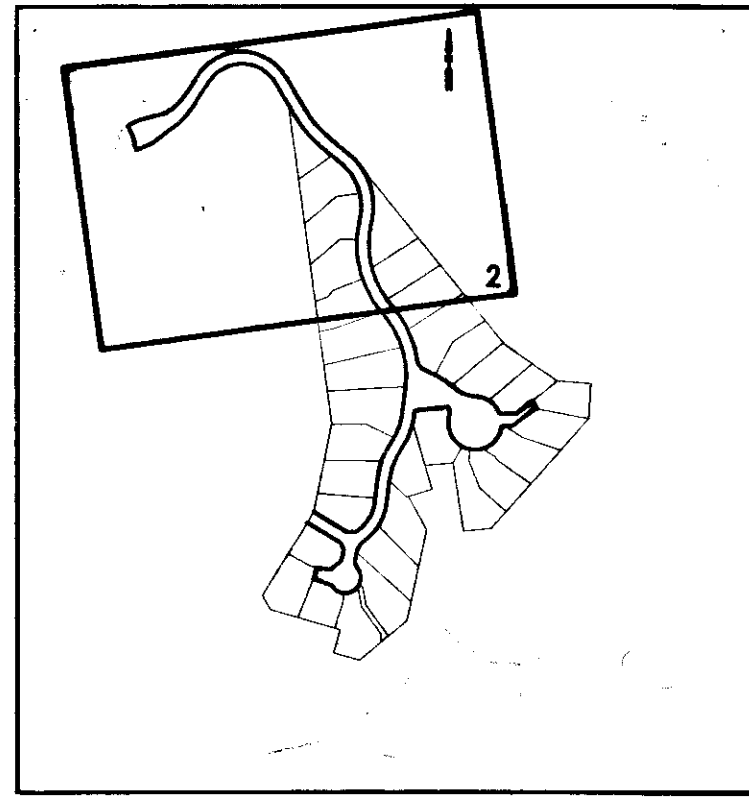
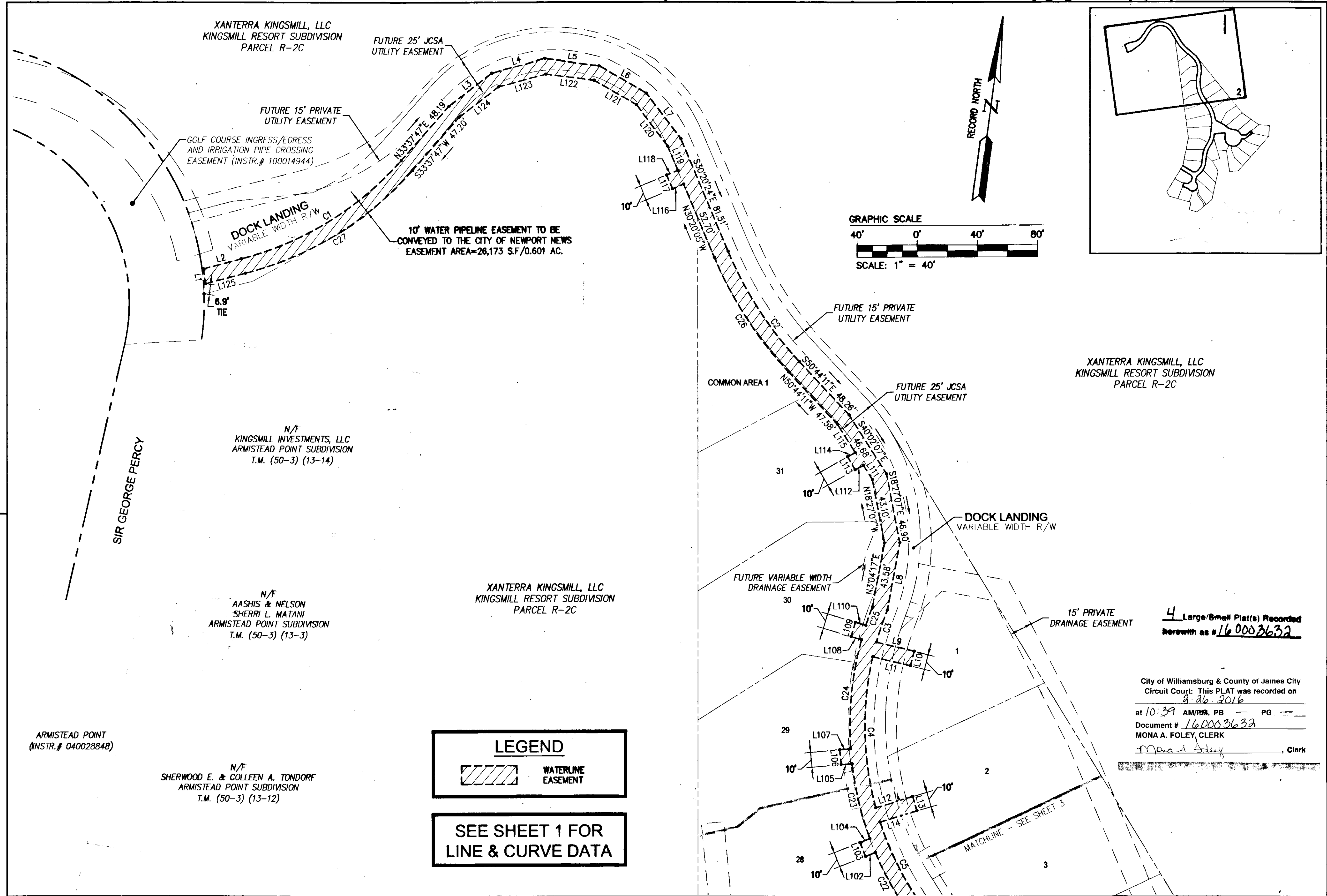




160003632



XANTERRA KINGSMILL, LLC  
KINGSMILL RESORT SUBDIVISION  
PARCEL R-2C

FUTURE 25' JCSA  
UTILITY EASEMENT

FUTURE 15' PRIVATE  
UTILITY EASEMENT

GOLF COURSE INGRESS/EGRESS  
AND IRRIGATION PIPE CROSSING  
EASEMENT (INSTR.# 100014944)

DOCK LANDING  
VARIABLE WIDTH R/W

10' WATER PIPELINE EASEMENT TO BE  
CONVEYED TO THE CITY OF NEWPORT NEWS  
EASEMENT AREA=26,173 S.F./0.601 AC.

6.9'  
TIE

SIR GEORGE PERCY

N/F  
KINGSMILL INVESTMENTS, LLC  
ARMISTEAD POINT SUBDIVISION  
T.M. (50-3) (13-14)

N/F  
AASHIS & NELSON  
SHERRI L. MATANI  
ARMISTEAD POINT SUBDIVISION  
T.M. (50-3) (13-3)

N/F  
SHERWOOD E. & COLLEEN A. TONDORF  
ARMISTEAD POINT SUBDIVISION  
T.M. (50-3) (13-12)

ARMISTEAD POINT  
(INSTR.# 040028848)

**LEGEND**

WATERLINE  
EASEMENT

**SEE SHEET 1 FOR  
LINE & CURVE DATA**

COMMON AREA 1

FUTURE 15' PRIVATE  
UTILITY EASEMENT

FUTURE 25' JCSA  
UTILITY EASEMENT

DOCK LANDING  
VARIABLE WIDTH R/W

15' PRIVATE  
DRAINAGE EASEMENT

FUTURE VARIABLE WIDTH  
DRAINAGE EASEMENT

31

30

29

28

27

26

25

24

23

22

21

20

19

18

17

16

15

14

13

12

11

10

9

8

7

6

5

4

3

2

1

MATCHLINE - SEE SHEET 3

4 Large/Small Plat(s) Recorded  
herewith as #160003632

City of Williamsburg & County of James City  
Circuit Court: This PLAT was recorded on  
8-26-2016  
at 10:39 AM/PM, PB PG  
Document # 160003632  
MONA A. FOLEY, CLERK  
*Mona A. Foley*, Clerk

Rev.	Date	Description	Revised By



**AES**  
CONSULTING ENGINEERS

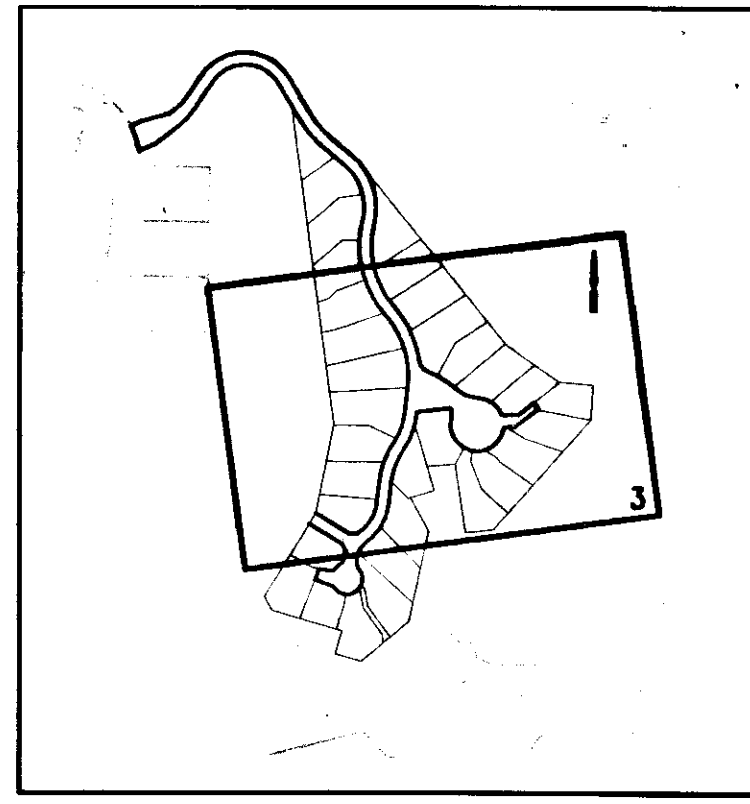
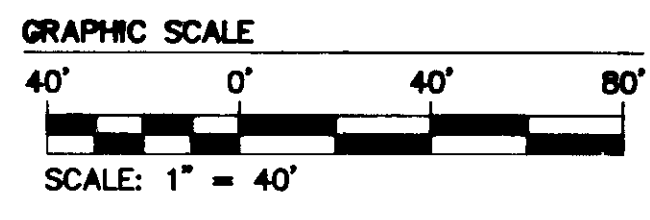
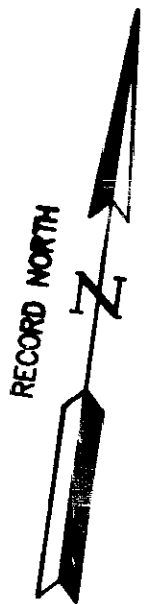
5248 Olde Towne Road, Suite 1  
Williamsburg, Virginia 23188  
Phone: (757) 253-0040  
Fax: (757) 220-8994  
www.aesva.com

Hampton Roads | Central Virginia | Middle Peninsula

PLAT OF WATER PIPELINE EASEMENT  
TO BE CONVEYED TO THE CITY OF NEWPORT NEWS  
**BURWELL'S BLUFF**  
AT  
**KINGSMILL ON THE JAMES**  
OWNER/DEVELOPER: XANTERRA KINGSMILL, LLC  
ROBERTS DISTRICT JAMES CITY COUNTY VIRGINIA

Project Contacts:	JAG/RDM
Project Number:	7753-39
Scale:	Date:
1" = 40'	01/08/2016
Sheet Number	
<b>2 of 4</b>	

160003632



XANTERRA KINGSMILL, LLC  
KINGSMILL RESORT SUBDIVISION  
PARCEL R-2C

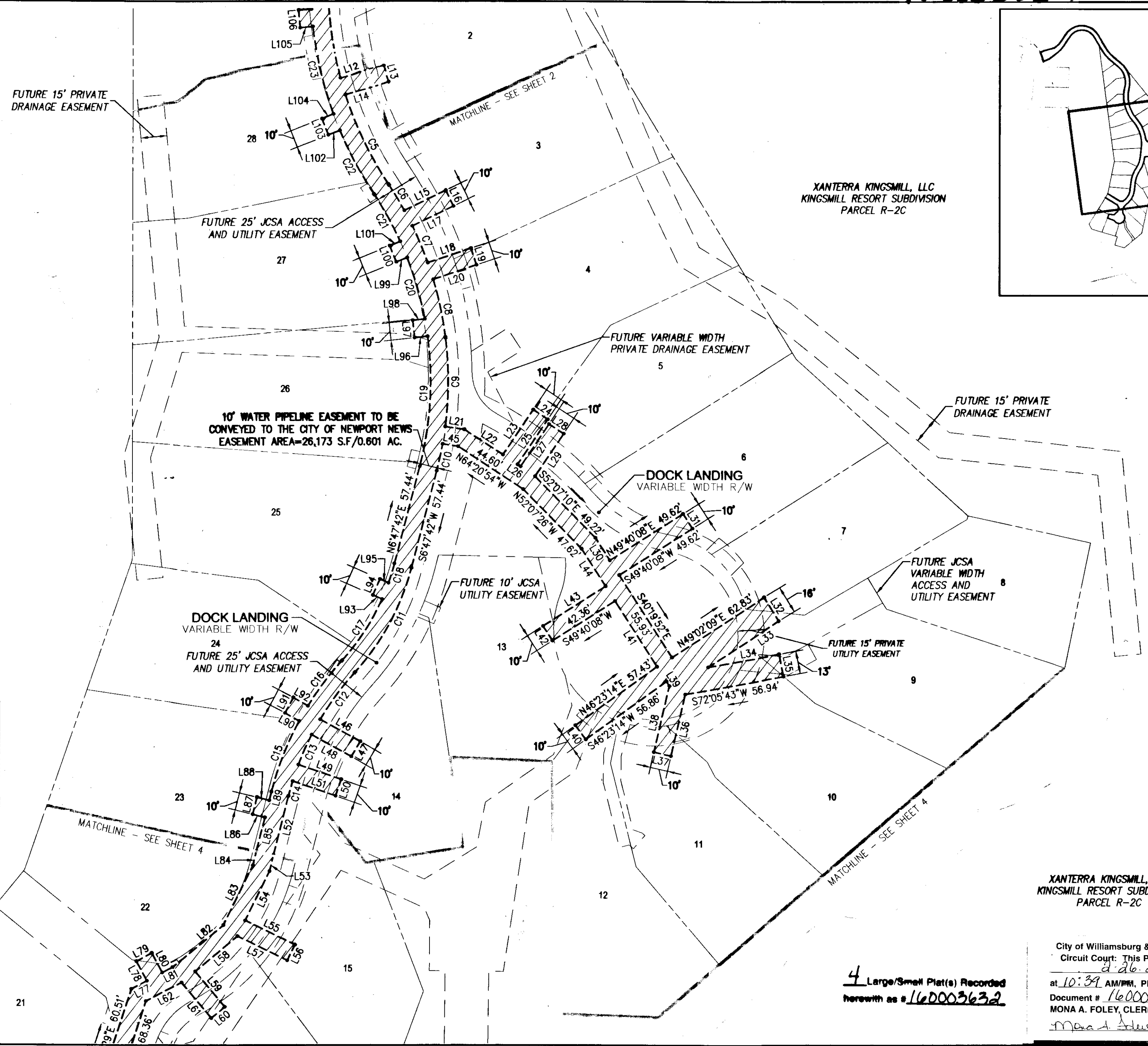
XANTERRA KINGSMILL, LLC  
KINGSMILL RESORT SUBDIVISION  
PARCEL R-2C

XANTERRA KINGSMILL, LLC  
KINGSMILL RESORT SUBDIVISION  
PARCEL R-2C

**LEGEND**

WATERLINE EASEMENT

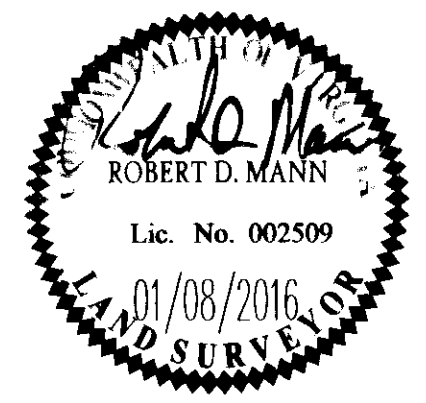
SEE SHEET 1 FOR  
LINE & CURVE DATA



City of Williamsburg & County of James City  
Circuit Court: This PLAT was recorded on  
8-26-2016  
at 10:39 AM/PM, PB PG  
Document # 160003632  
MONA A. FOLEY, CLERK  
*Mona A. Foley*, Clerk

4 Large/Small Plat(s) Recorded  
herewith as # 160003632

Rev.	Date	Description	Revised By

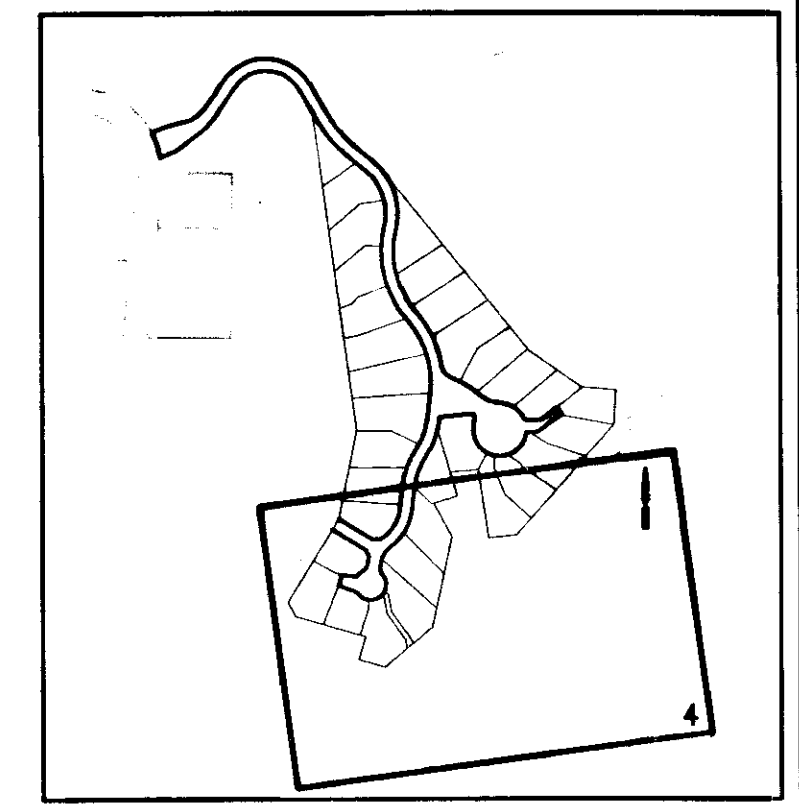
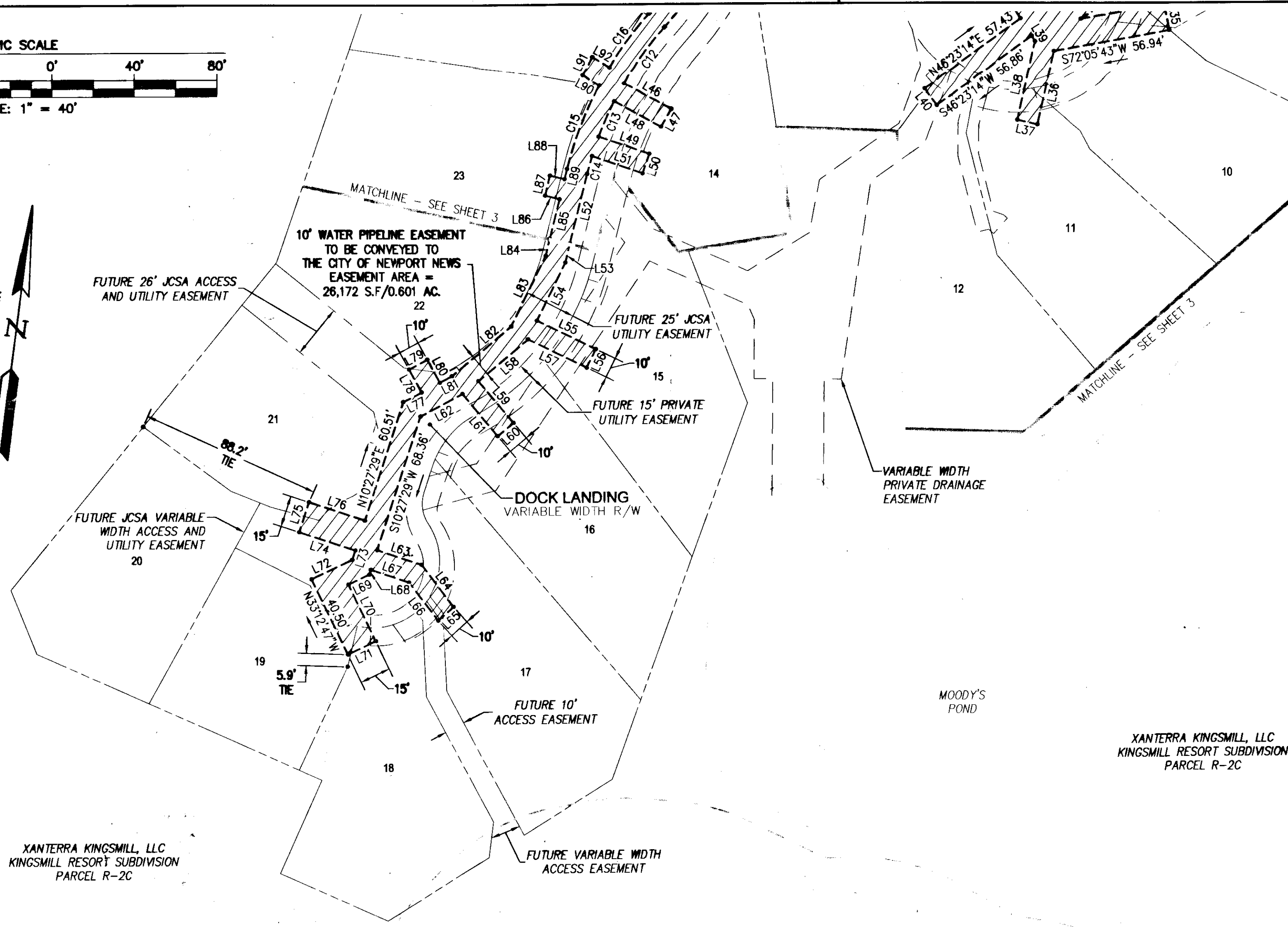
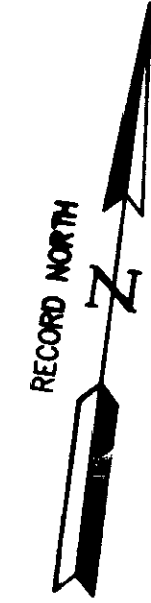
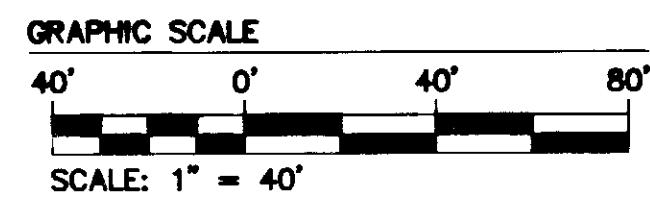


5248 Old Towne Road, Suite 1  
Williamsburg, Virginia 23188  
Phone: (757) 253-0040  
Fax: (757) 220-8994  
www.aesva.com

PLAT OF WATER PIPELINE EASEMENT  
TO BE CONVEYED TO THE CITY OF NEWPORT NEWS  
**BURWELL'S BLUFF**  
AT  
**KINGSMILL ON THE JAMES**  
OWNER/DEVELOPER: XANTERRA KINGSMILL, LLC  
ROBERTS DISTRICT JAMES CITY COUNTY VIRGINIA

Project Contacts: JAG/RDM	
Project Number: 7753-39	
Scale: 1" = 40'	Date: 01/08/2016
Sheet Number	
<b>3 of 4</b>	

160003632



4 Large/Small Plat(s) Recorded  
herewith as # 160003632

City of Williamsburg & County of James City  
Circuit Court; This PLAT was recorded on  
2-26-2016  
at 10:39 AM/PM, PG  
Document # 160003632  
MONA A. FOLEY, CLERK  
Mona A. Foley, Clerk

XANTERRA KINGSMILL, LLC  
KINGSMILL RESORT SUBDIVISION  
PARCEL R-2C

XANTERRA KINGSMILL, LLC  
KINGSMILL RESORT SUBDIVISION  
PARCEL R-2C

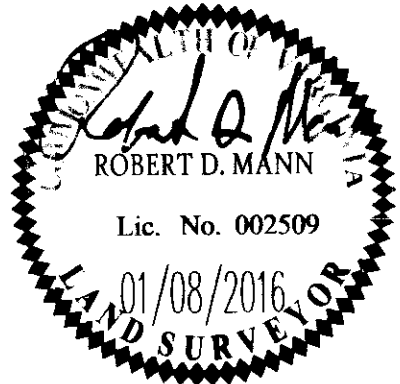
**LEGEND**

WATERLINE EASEMENT

SEE SHEET 1 FOR  
LINE & CURVE DATA

KINGSMILL RESORT  
DEVELOPMENT, LLC  
COTTAGES ON THE JAMES  
PARCEL R-2A  
INSTR. # 130005498

Rev.	Date	Description	Revised By



**RES**  
CONSULTING ENGINEERS

5248 Olde Towne Road, Suite 1  
Williamsburg, Virginia 23188  
Phone: (757) 253-0040  
Fax: (757) 220-8994  
www.aesva.com

Hampton Roads | Central Virginia | Middle Peninsula

PLAT OF WATER PIPELINE EASEMENT  
TO BE CONVEYED TO THE CITY OF NEWPORT NEWS  
**BURWELL'S BLUFF**  
AT  
**KINGSMILL ON THE JAMES**  
OWNER/DEVELOPER: XANTERRA KINGSMILL, LLC  
ROBERTS DISTRICT JAMES CITY COUNTY VIRGINIA

Project Contacts: JAG/RDM  
Project Number: 7753-38  
Scale: 1" = 40'  
Date: 01/08/2016  
Sheet Number  
**4 of 4**