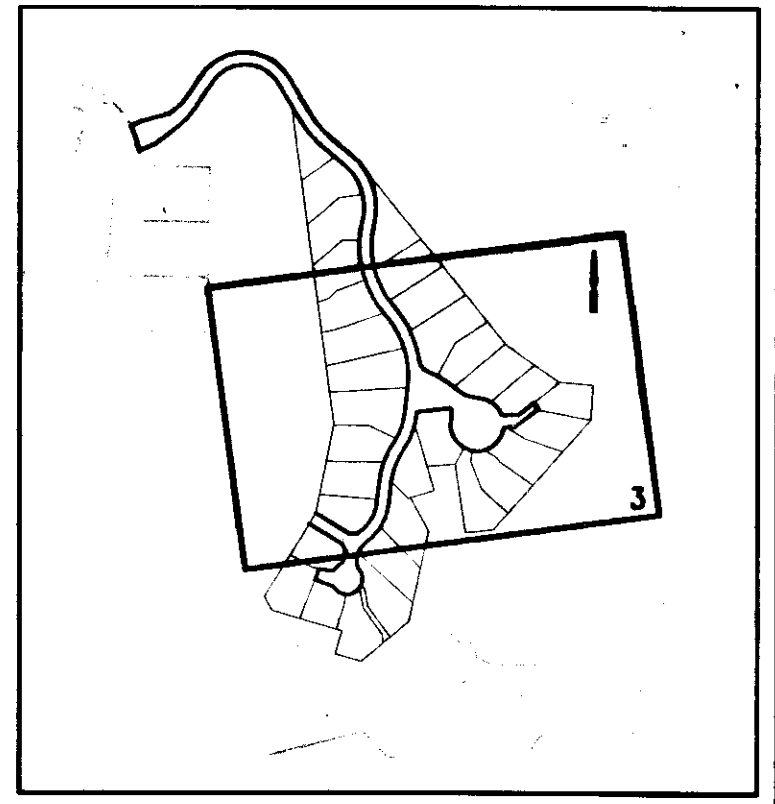
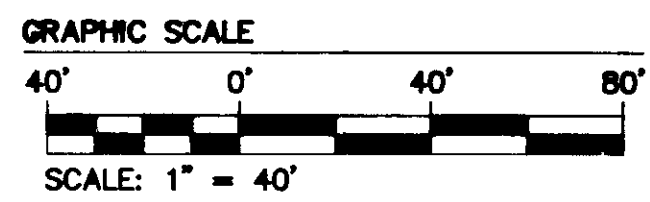
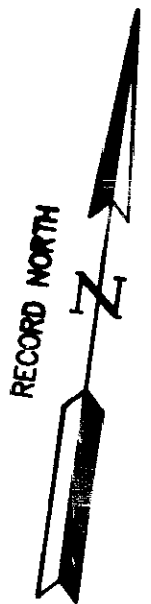


160003632



XANTERRA KINGSMILL, LLC
KINGSMILL RESORT SUBDIVISION
PARCEL R-2C

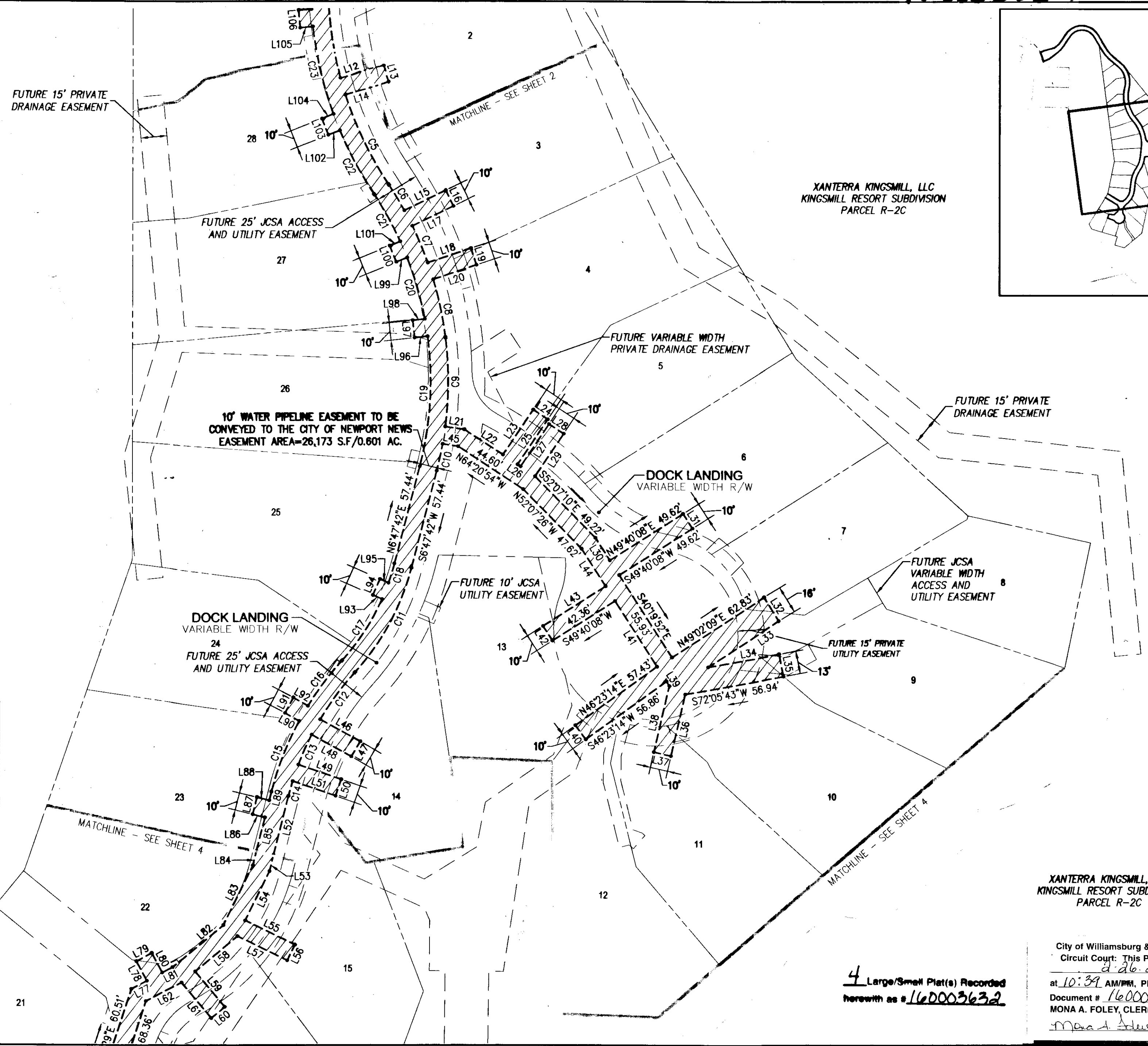
XANTERRA KINGSMILL, LLC
KINGSMILL RESORT SUBDIVISION
PARCEL R-2C

XANTERRA KINGSMILL, LLC
KINGSMILL RESORT SUBDIVISION
PARCEL R-2C

LEGEND

WATERLINE EASEMENT

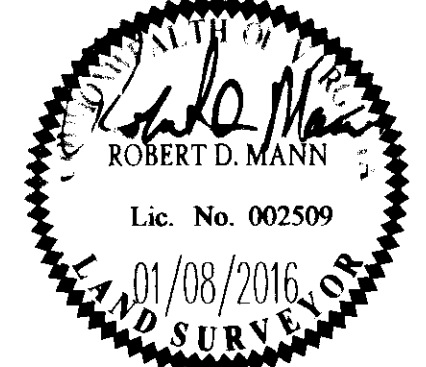
SEE SHEET 1 FOR
LINE & CURVE DATA



City of Williamsburg & County of James City
Circuit Court: This PLAT was recorded on
8-26-2016
at 10:39 AM/PM, PB PG
Document # 160003632
MONA A. FOLEY, CLERK
Mona A. Foley, Clerk

4 Large/Small Plat(s) Recorded
herewith as # 160003632

Rev.	Date	Description	Revised By



AES
CONSULTING ENGINEERS
Hampton Roads | Central Virginia | Middle Peninsula

5248 Old Towne Road, Suite 1
Williamsburg, Virginia 23188
Phone: (757) 253-0040
Fax: (757) 220-8994
www.aesva.com

PLAT OF WATER PIPELINE EASEMENT
TO BE CONVEYED TO THE CITY OF NEWPORT NEWS
BURWELL'S BLUFF
AT
KINGSMILL ON THE JAMES
OWNER/DEVELOPER: XANTERRA KINGSMILL, LLC
ROBERTS DISTRICT JAMES CITY COUNTY VIRGINIA

Project Contacts: JAG/RDM	
Project Number: 7753-39	
Scale: 1" = 40'	Date: 01/08/2016
Sheet Number	
3 of 4	