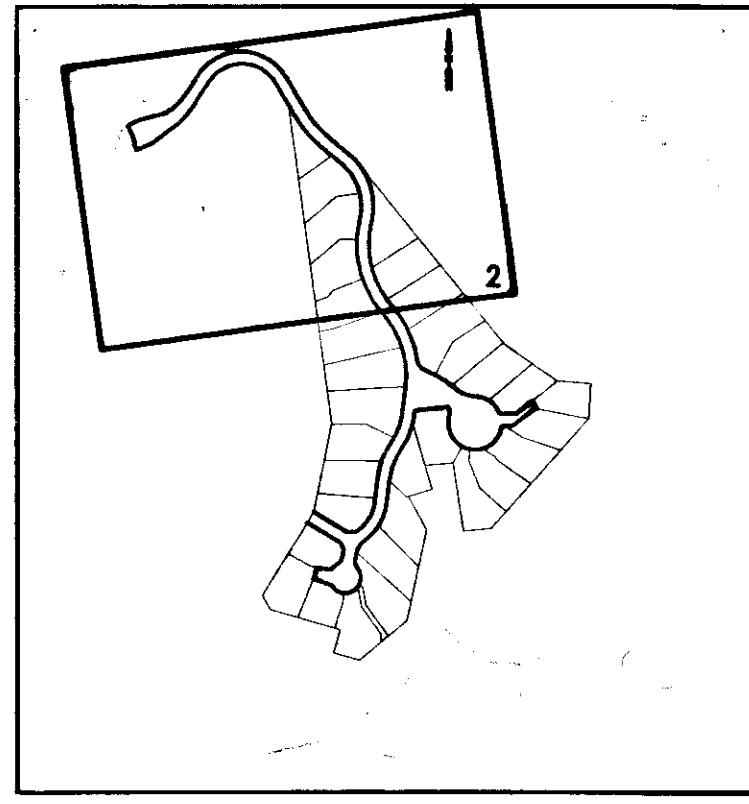
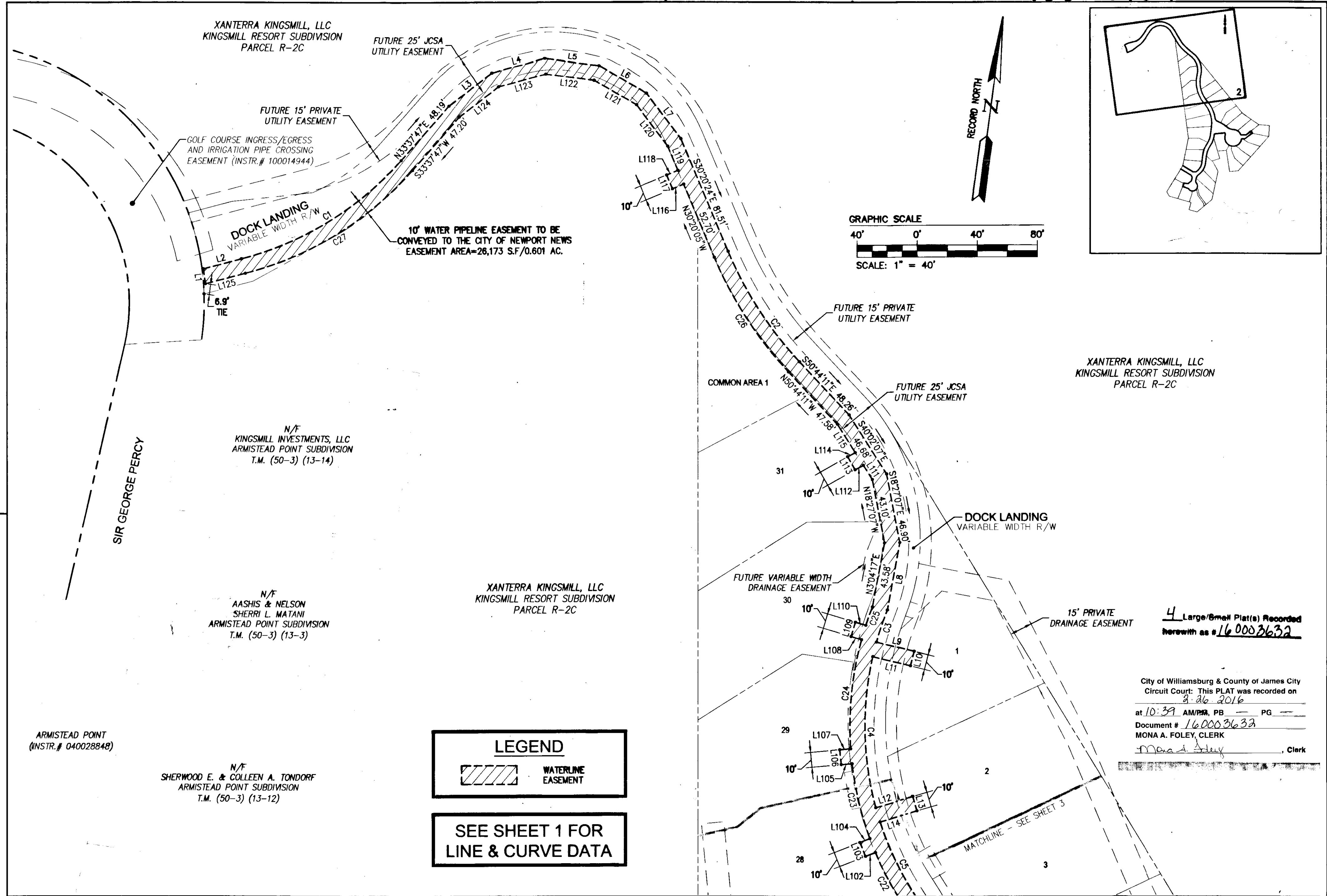


160003632



XANTERRA KINGSMILL, LLC
KINGSMILL RESORT SUBDIVISION
PARCEL R-2C

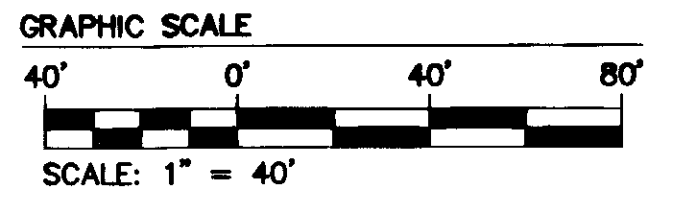
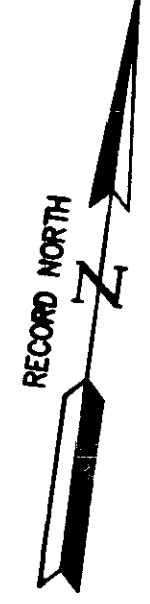
FUTURE 25' JCSA
UTILITY EASEMENT

FUTURE 15' PRIVATE
UTILITY EASEMENT

GOLF COURSE INGRESS/EGRESS
AND IRRIGATION PIPE CROSSING
EASEMENT (INSTR.# 100014944)

DOCK LANDING
VARIABLE WIDTH R/W

10' WATER PIPELINE EASEMENT TO BE
CONVEYED TO THE CITY OF NEWPORT NEWS
EASEMENT AREA=26,173 S.F./0.601 AC.



XANTERRA KINGSMILL, LLC
KINGSMILL RESORT SUBDIVISION
PARCEL R-2C

SIR GEORGE PERCY

N/F
KINGSMILL INVESTMENTS, LLC
ARMISTEAD POINT SUBDIVISION
T.M. (50-3) (13-14)

N/F
AASHIS & NELSON
SHERRI L. MATANI
ARMISTEAD POINT SUBDIVISION
T.M. (50-3) (13-3)

XANTERRA KINGSMILL, LLC
KINGSMILL RESORT SUBDIVISION
PARCEL R-2C

ARMISTEAD POINT
(INSTR.# 040028848)

N/F
SHERWOOD E. & COLLEEN A. TONDORF
ARMISTEAD POINT SUBDIVISION
T.M. (50-3) (13-12)

LEGEND

WATERLINE EASEMENT

**SEE SHEET 1 FOR
LINE & CURVE DATA**

FUTURE 15' PRIVATE
UTILITY EASEMENT

FUTURE 25' JCSA
UTILITY EASEMENT

COMMON AREA 1

DOCK LANDING
VARIABLE WIDTH R/W

FUTURE VARIABLE WIDTH
DRAINAGE EASEMENT

15' PRIVATE
DRAINAGE EASEMENT

4 Large/Small Plat(s) Recorded
herewith as #160003632

City of Williamsburg & County of James City
Circuit Court: This PLAT was recorded on
8-26-2016
at 10:39 AM/PM, PB PG
Document # 160003632
MONA A. FOLEY, CLERK
Monica Foley, Clerk

MATCHLINE - SEE SHEET 3

Rev.	Date	Description	Revised By



AES
CONSULTING ENGINEERS
Hampton Roads | Central Virginia | Middle Peninsula

5248 Olde Towne Road, Suite 1
Williamsburg, Virginia 23188
Phone: (757) 253-0040
Fax: (757) 220-8994
www.aesva.com

PLAT OF WATER PIPELINE EASEMENT
TO BE CONVEYED TO THE CITY OF NEWPORT NEWS
BURWELL'S BLUFF
AT
KINGSMILL ON THE JAMES
OWNER/DEVELOPER: XANTERRA KINGSMILL, LLC
ROBERTS DISTRICT JAMES CITY COUNTY VIRGINIA

Project Contacts:	JAG/RDM
Project Number:	7753-39
Scale:	Date:
1" = 40'	01/08/2016
Sheet Number	
2 of 4	