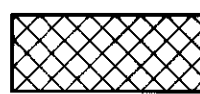
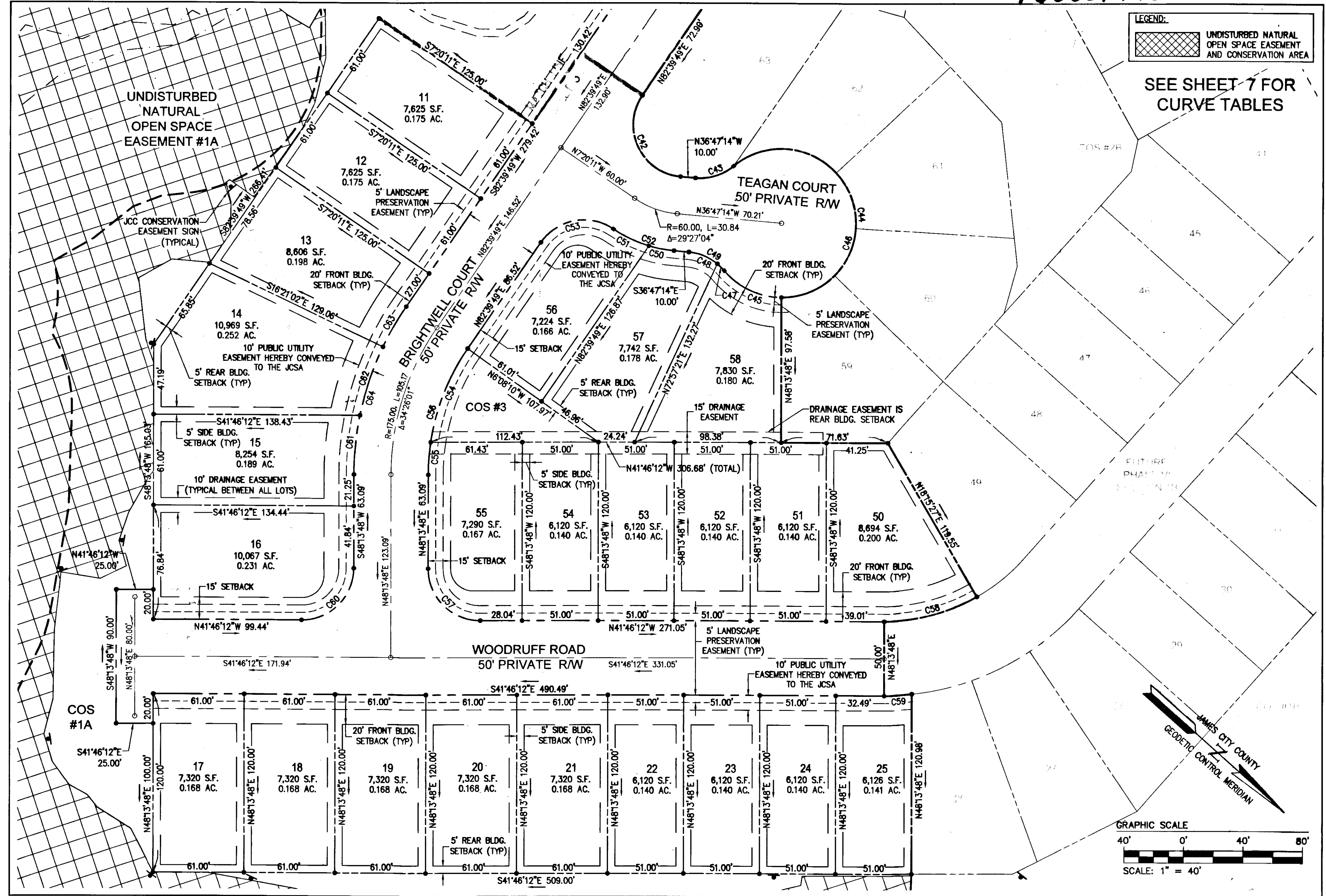


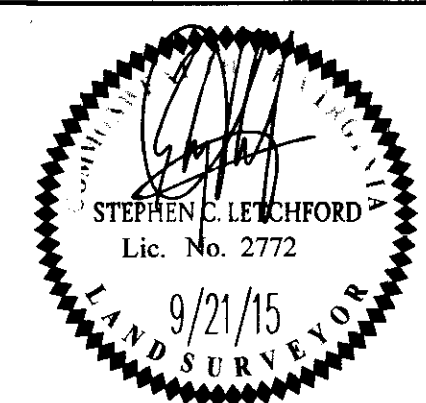
160001776

LEGEND:
 UNDISTURBED NATURAL OPEN SPACE EASEMENT AND CONSERVATION AREA

SEE SHEET 7 FOR CURVE TABLES



TR/SCL		City of Williamsburg & County of James City Circuit Court: This PLAT was recorded on 2-3-2016 at 10:16 AM/PM, PG _____ Document # 160001776 MONA A. FOLEY, CLERK	
1	09/21/15	REVISED PER COUNTY COMMENTS	MMB
Rev.	Date	Description	Revised By



7 Large/Small Plat(s) Recorded herewith as # 160001776

AES
 CONSULTING ENGINEERS
 Hampton Roads | Central Virginia | Middle Peninsula

614 Moorefield Park Drive
 Richmond, Virginia 23236-3855
 Phone: (804) 330-8040
 Fax: (804) 330-9840
 www.aesva.com

PLAT OF SUBDIVISION
 LOTS 1-25, 50-58, 65-79 AND 109-111
**COLONIAL HERITAGE
 PHASE VI - SECTION 1A**
 OWNER / DEVELOPER: COLONIAL HERITAGE, L.L.C.
 STONEHOUSE DISTRICT JAMES CITY COUNTY VIRGINIA

Project Contacts: TRS/BCB	
Project Number: 8881-61A	
Scale: 1"=40'	Date: 07/24/15
Sheet Number	
6 OF 7	