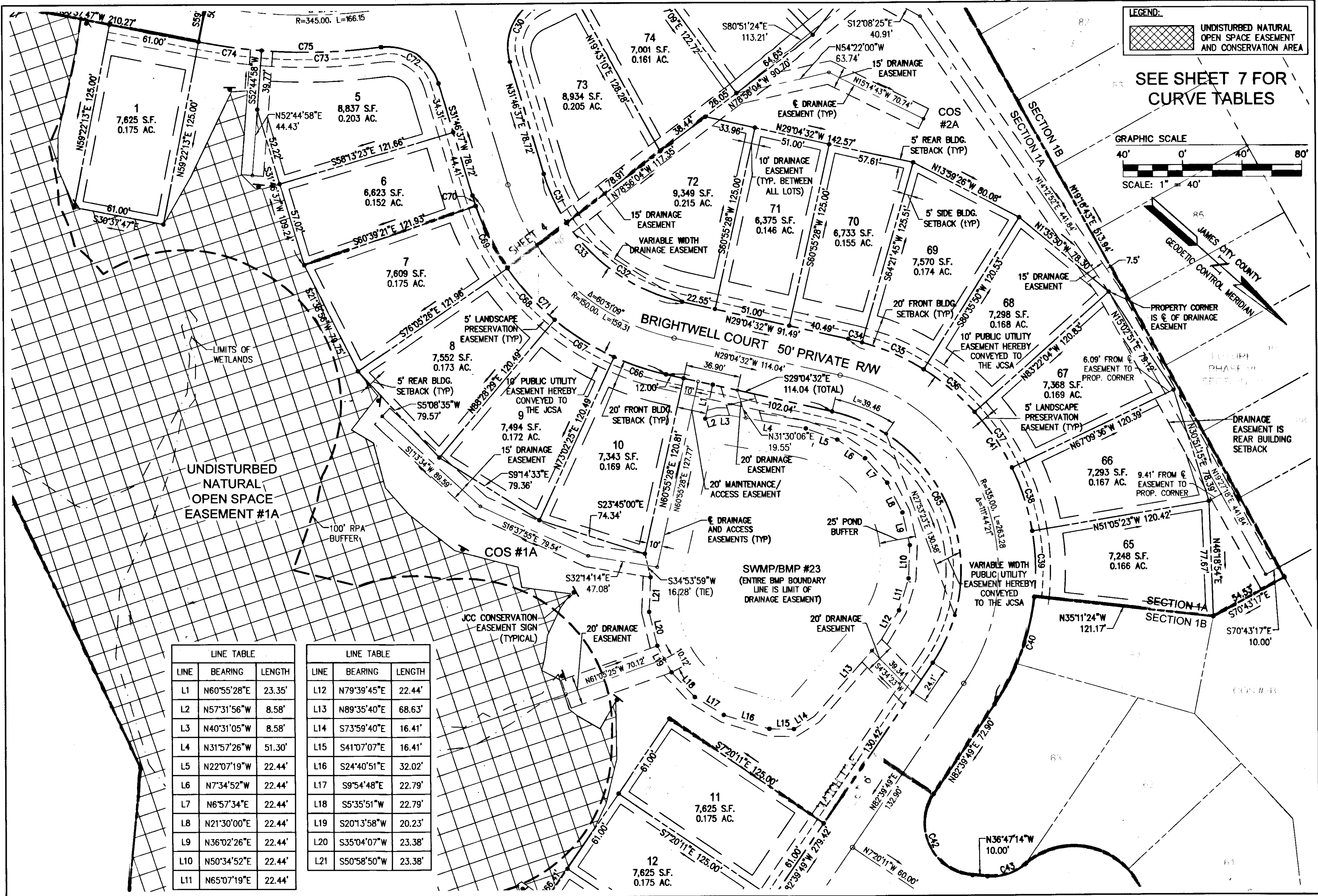


160001776



LINE TABLE

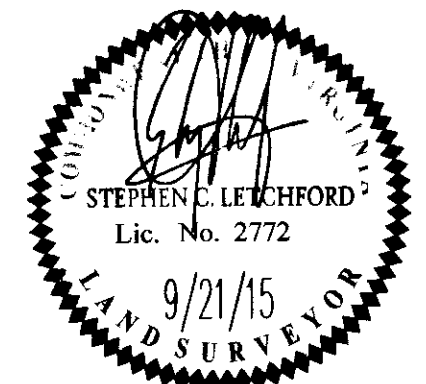
LINE	BEARING	LENGTH
L1	N60°55'28"E	23.35'
L2	N57°31'56"W	8.58'
L3	N40°31'05"W	8.58'
L4	N31°57'26"W	51.30'
L5	N22°07'19"W	22.44'
L6	N7°34'52"W	22.44'
L7	N6°57'34"E	22.44'
L8	N21°30'00"E	22.44'
L9	N36°02'26"E	22.44'
L10	N50°34'52"E	22.44'
L11	N65°07'19"E	22.44'

LINE TABLE

LINE	BEARING	LENGTH
L12	N79°39'45"E	22.44'
L13	N89°35'40"E	68.63'
L14	S73°59'40"E	16.41'
L15	S41°07'07"E	16.41'
L16	S24°40'51"E	32.02'
L17	S9°54'48"E	22.79'
L18	S5°35'51"W	22.79'
L19	S20°13'58"W	20.23'
L20	S35°04'07"W	23.38'
L21	S50°58'50"W	23.38'

City of Williamsburg & County of James City
 Circuit Court: This PLAT was recorded on
 8-3-2016
 at 10:16 AM/PM, PG _____
 Document # 160001776
 MONA A. FOLEY, CLERK
 _____, Clerk

Rev.	Date	Description	Revised By
1	09/21/15	REVISED PER COUNTY COMMENTS	_____



7 Large/Small Plat(s) Recorded
 herewith as # 160001776

AES
 CONSULTING ENGINEERS

614 Moorefield Park Drive
 Richmond, Virginia 23236-3655
 Phone: (804) 330-8040
 Fax: (804) 330-9840
 www.aesva.com

Hampton Roads | Central Virginia | Middle Peninsula

PLAT OF SUBDIVISION
 LOTS 1-25, 50-58, 65-79 AND 109-111
**COLONIAL HERITAGE
 PHASE VI - SECTION 1A**
 OWNER / DEVELOPER: COLONIAL HERITAGE, L.L.C.

STONEHOUSE DISTRICT JAMES CITY COUNTY VIRGINIA

Project Contacts: TRS/SCL
 Project Number: 8881-61A
 Scale: 1"=40' Date: 07/24/15
 Sheet Number
5 OF 7