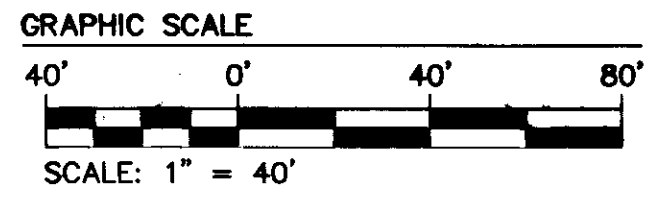
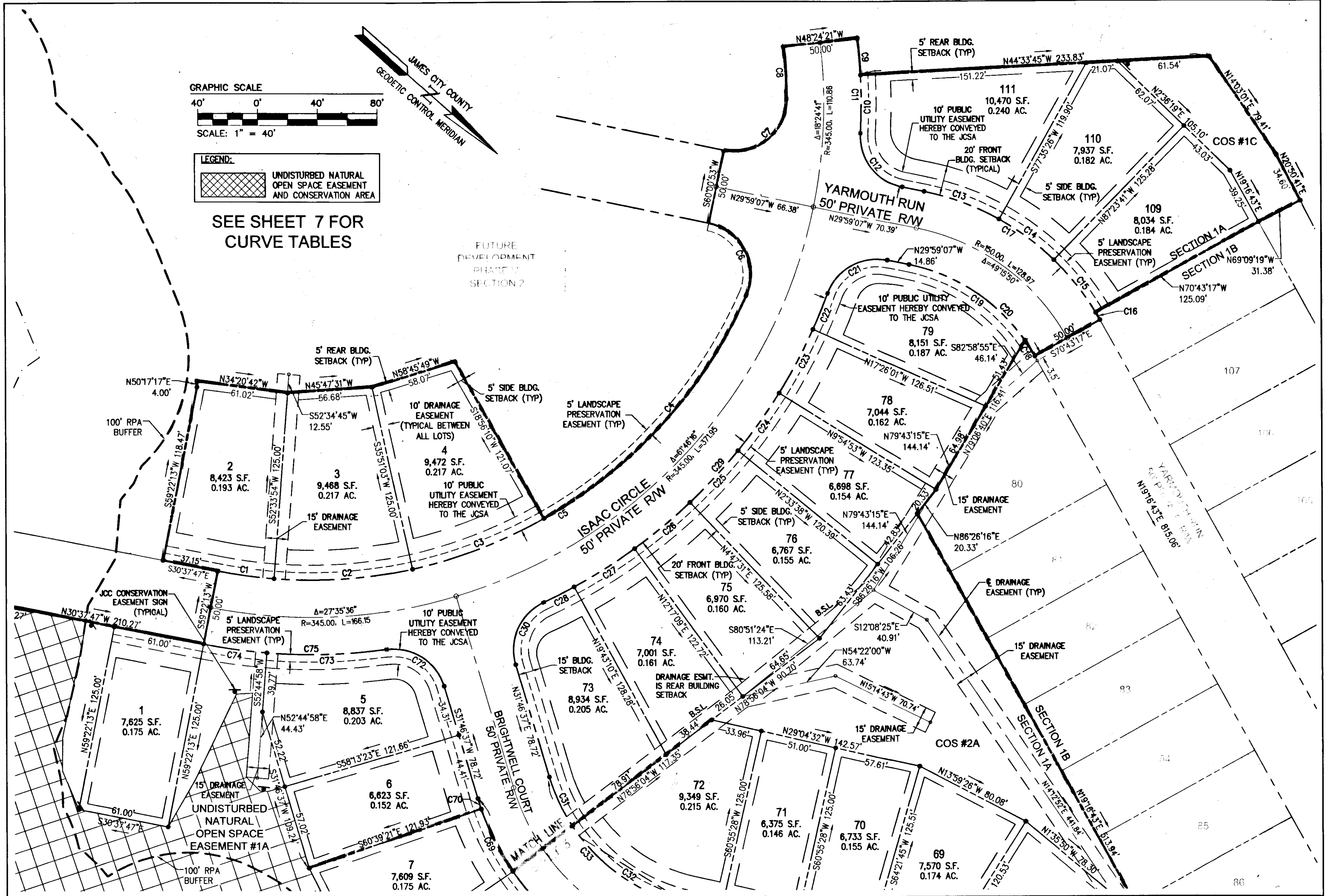


160001776



LEGEND:

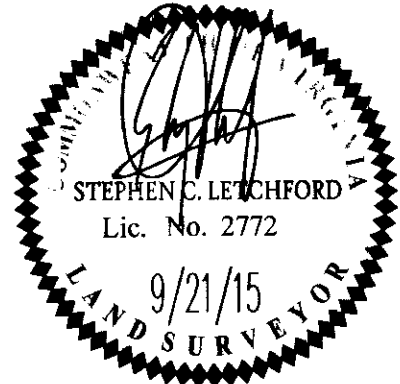
UNDISTURBED NATURAL OPEN SPACE EASEMENT AND CONSERVATION AREA

SEE SHEET 7 FOR CURVE TABLES

FUTURE DEVELOPMENT PHASE V SECTION 2

City of Williamsburg & County of James City Circuit Court: This PLAT was recorded on 2-3-2016 at 10:16 AM/DM, PB PG Document # 160001776 MONA A. FOLEY, CLERK

Rev.	Date	Description	Revised By
1	09/21/15	REVISED PER COUNTY COMMENTS	RMS



7 Large/Small Plat(s) Recorded herewith as # 160001776

614 Moorefield Park Drive
Richmond, Virginia 23238-3855
Phone: (804) 330-8040
Fax: (804) 330-9840
www.aesva.com

PLAT OF SUBDIVISION
LOTS 1-25, 50-58, 65-79 AND 109-111
**COLONIAL HERITAGE
PHASE VI - SECTION 1A**
OWNER / DEVELOPER: COLONIAL HERITAGE, L.L.C.

STONEHOUSE DISTRICT JAMES CITY COUNTY VIRGINIA

Project Contacts: TRS/SCL
Project Number: 8881-61A
Scale: 1"=40' Date: 07/24/15
Sheet Number
4 OF 7