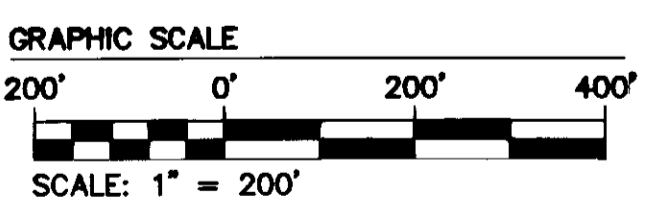
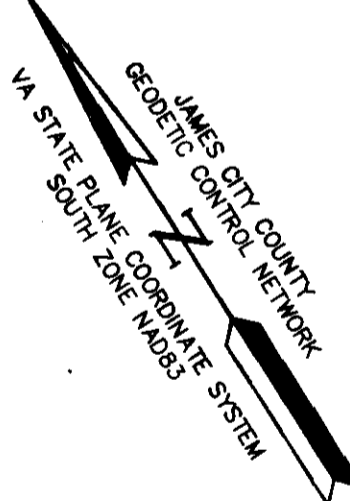
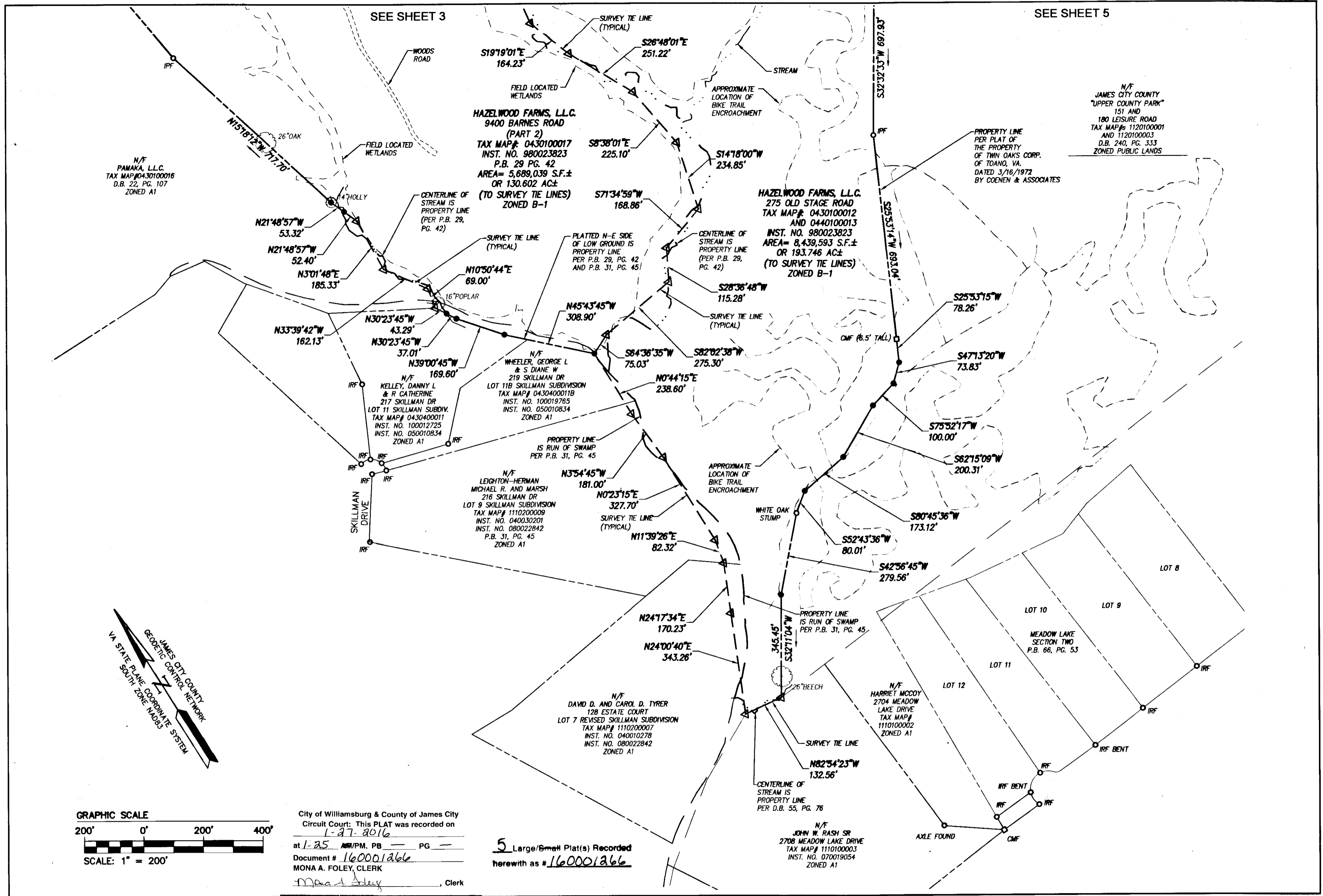


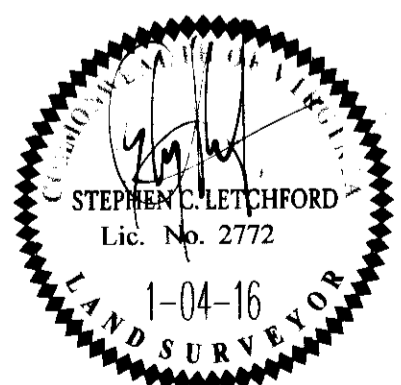
160001266



City of Williamsburg & County of James City  
 Circuit Court: This PLAT was recorded on  
 1-27-2016  
 at 1:25 AM/PM, PG. 5  
 Document # 160001266  
 MONA A. FOLEY, CLERK  
*Maad Alex*, Clerk

5 Large/6met Plat(s) Recorded  
 herewith as #160001266

Rev.	Date	Description	Revised By



**AES**  
 CONSULTING ENGINEERS  
 Hampton Roads | Central Virginia | Middle Peninsula  
 5248 Olde Towne Road, Suite 1  
 Williamsburg, Virginia 23188  
 Phone: (757) 253-0040  
 Fax: (757) 220-8994  
 www.aesva.com

PLAT OF SURVEY  
 EIGHT PARCELS OF LAND CONTAINING A TOTAL AREA  
 OF 407.236 ACRES±  
 PREPARED FOR HAZELWOOD FARMS, L.L.C.  
 A VIRGINIA CORPORATION  
 STONEHOUSE DISTRICT JAMES CITY COUNTY VIRGINIA

Project Contacts: SCL / JFS	
Project Number: W10325-00	
Scale: 1"=200'	Date: 1-04-2016
Sheet Number	
<b>4 OF 5</b>	