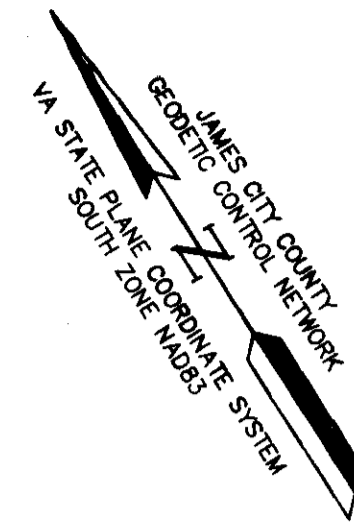
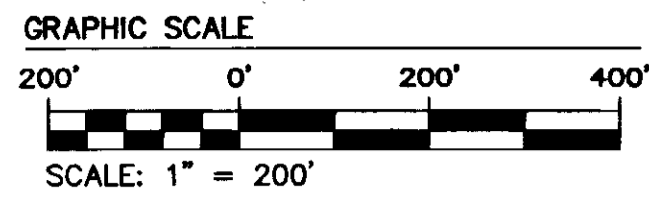
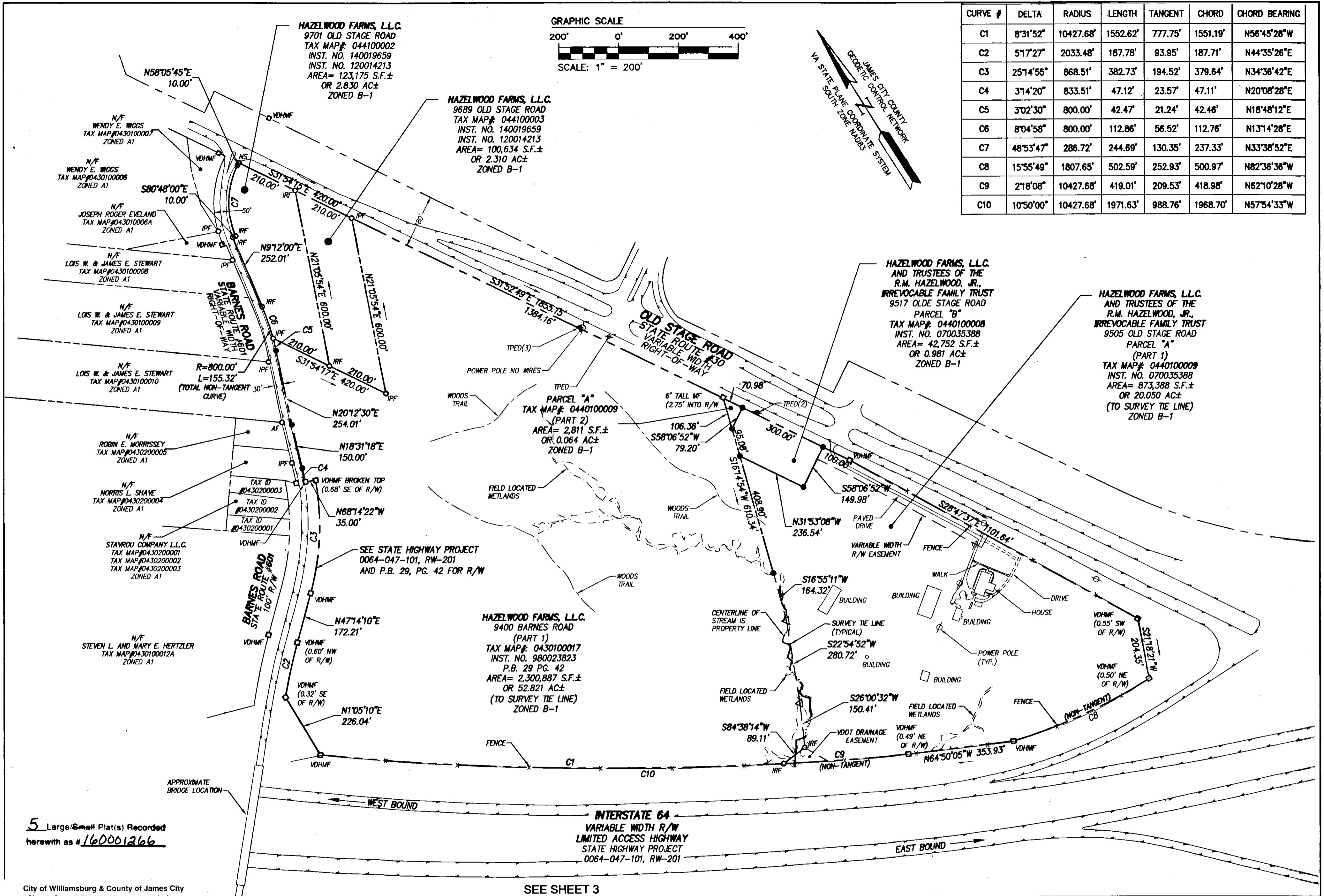


160001266



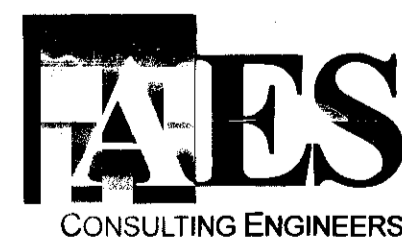
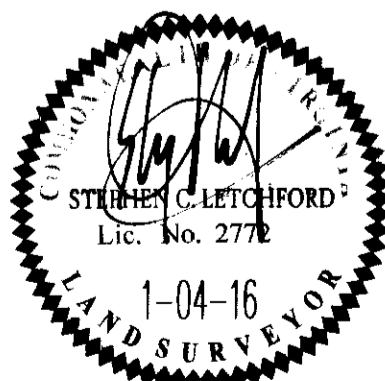
CURVE #	DELTA	RADIUS	LENGTH	TANGENT	CHORD	CHORD BEARING
C1	8°31'52"	10427.68'	1552.62'	777.75'	1551.19'	N56°45'28"W
C2	5°17'27"	2033.48'	187.78'	93.95'	187.71'	N44°35'26"E
C3	25°14'55"	868.51'	382.73'	194.52'	379.64'	N34°36'42"E
C4	3°14'20"	833.51'	47.12'	23.57'	47.11'	N20°08'28"E
C5	3°02'30"	800.00'	42.47'	21.24'	42.46'	N18°48'12"E
C6	8°04'58"	800.00'	112.86'	56.52'	112.76'	N13°14'28"E
C7	48°53'47"	286.72'	244.69'	130.35'	237.33'	N33°38'52"E
C8	15°55'49"	1807.65'	502.59'	252.93'	500.97'	N82°36'38"W
C9	2°18'08"	10427.68'	419.01'	209.53'	418.98'	N62°10'28"W
C10	10°50'00"	10427.68'	1971.63'	988.76'	1968.70'	N57°54'33"W



5 Large/6meH Plat(s) Recorded herewith as #160001266

City of Williamsburg & County of James City Circuit Court: This PLAT was recorded on 1-27-2016 at 1:25 AM/PM, PB PG Document # 160001266 MONA A. FOLEY, CLERK

Rev.	Date	Description	Revised By



5248 Old Towne Road, Suite 1  
Williamsburg, Virginia 23188  
Phone: (757) 253-0040  
Fax: (757) 220-8994  
www.aesva.com

PLAT OF SURVEY  
EIGHT PARCELS OF LAND CONTAINING A TOTAL AREA OF 407.236 ACRES±  
PREPARED FOR HAZELWOOD FARMS, L.L.C. A VIRGINIA CORPORATION  
STONEHOUSE DISTRICT JAMES CITY COUNTY VIRGINIA

Project Contacts:	SCL / JFS
Project Number:	W10325-00
Scale:	1"=200'
Date:	1-04-2016
Sheet Number	2 OF 5