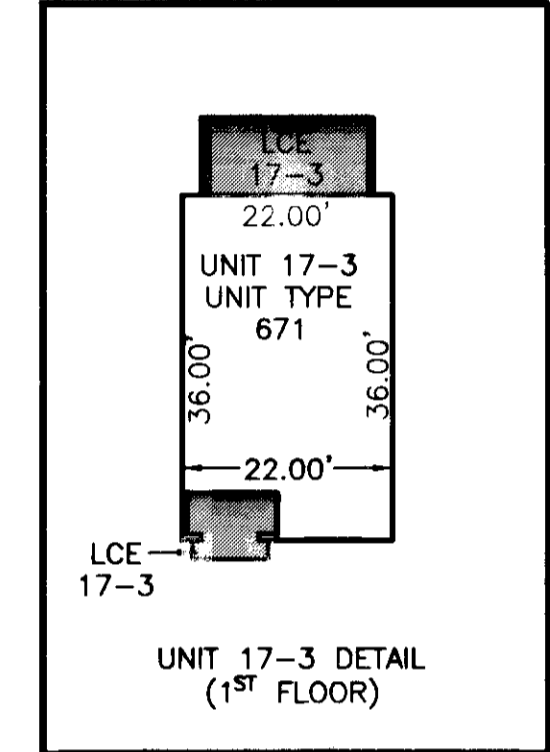
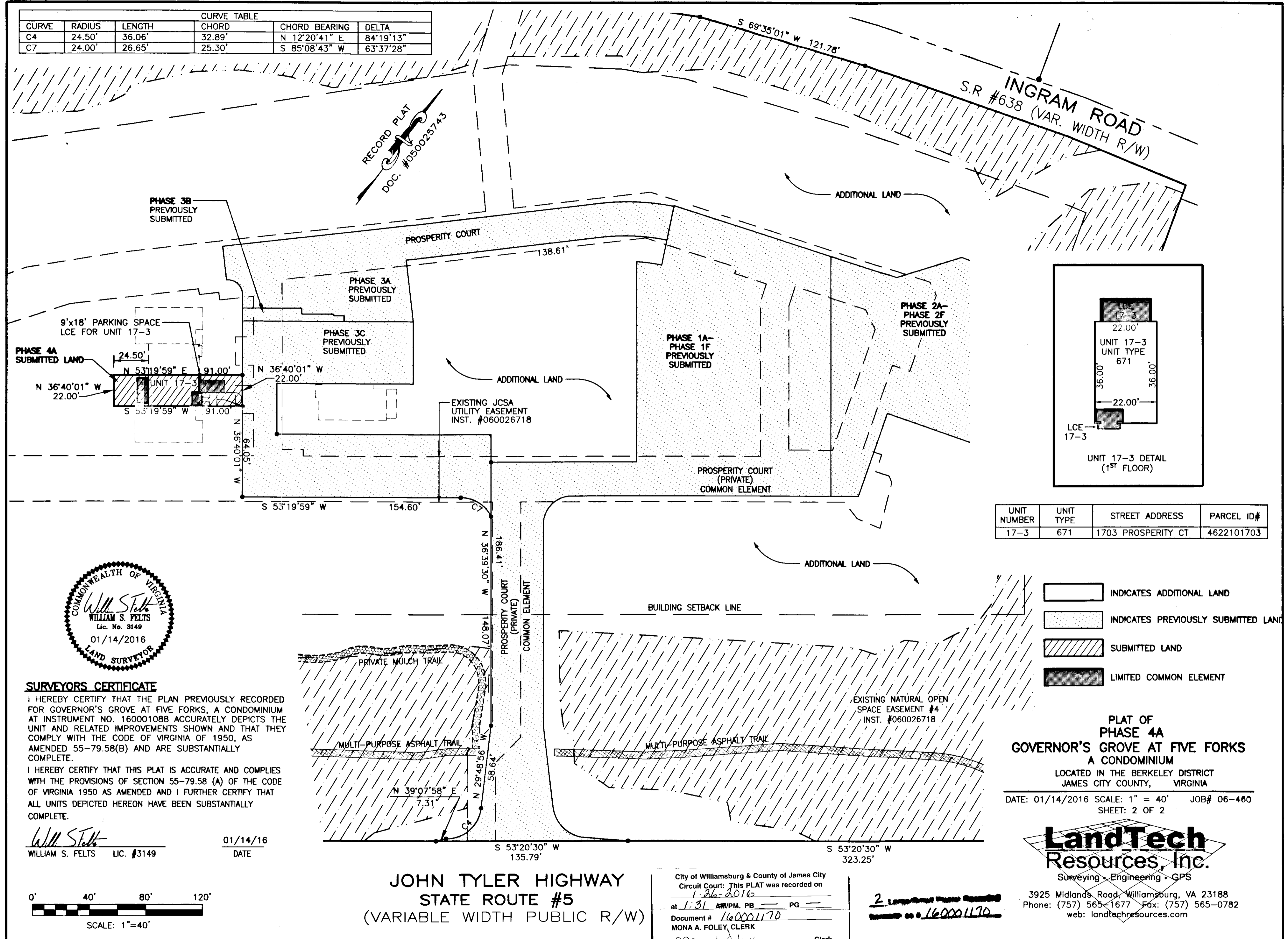


160001170

CURVE TABLE					
CURVE	RADIUS	LENGTH	CHORD	CHORD BEARING	DELTA
C4	24.50'	36.06'	32.89'	N 12°20'41" E	84°19'13"
C7	24.00'	26.65'	25.30'	S 85°08'43" W	63°37'28"



UNIT NUMBER	UNIT TYPE	STREET ADDRESS	PARCEL ID#
17-3	671	1703 PROSPERITY CT	4622101703

- INDICATES ADDITIONAL LAND
- INDICATES PREVIOUSLY SUBMITTED LAND
- SUBMITTED LAND
- LIMITED COMMON ELEMENT

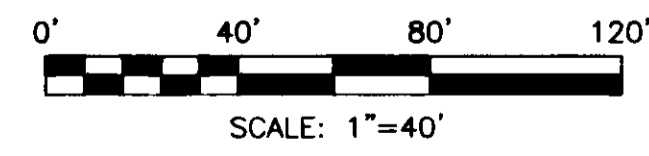
**PLAT OF  
PHASE 4A  
GOVERNOR'S GROVE AT FIVE FORKS  
A CONDOMINIUM**  
 LOCATED IN THE BERKELEY DISTRICT  
 JAMES CITY COUNTY, VIRGINIA  
 DATE: 01/14/2016 SCALE: 1" = 40' JOB# 06-460  
 SHEET: 2 OF 2

**LandTech Resources, Inc.**  
 Surveying - Engineering - GPS  
 3925 Midlands Road, Williamsburg, VA 23188  
 Phone: (757) 565-1677 Fax: (757) 565-0782  
 web: landtechresources.com



**SURVEYORS CERTIFICATE**  
 I HEREBY CERTIFY THAT THE PLAN PREVIOUSLY RECORDED FOR GOVERNOR'S GROVE AT FIVE FORKS, A CONDOMINIUM AT INSTRUMENT NO. 160001088 ACCURATELY DEPICTS THE UNIT AND RELATED IMPROVEMENTS SHOWN AND THAT THEY COMPLY WITH THE CODE OF VIRGINIA OF 1950, AS AMENDED 55-79.58(B) AND ARE SUBSTANTIALLY COMPLETE.  
 I HEREBY CERTIFY THAT THIS PLAT IS ACCURATE AND COMPLIES WITH THE PROVISIONS OF SECTION 55-79.58 (A) OF THE CODE OF VIRGINIA 1950 AS AMENDED AND I FURTHER CERTIFY THAT ALL UNITS DEPICTED HEREON HAVE BEEN SUBSTANTIALLY COMPLETE.

*William S. Felts*  
 WILLIAM S. FELTS LIC. #3149 01/14/16 DATE



**JOHN TYLER HIGHWAY  
STATE ROUTE #5  
(VARIABLE WIDTH PUBLIC R/W)**

City of Williamsburg & County of James City  
 Circuit Court: This PLAT was recorded on  
 1-26-2016  
 at 1:31 AM/PM, PB PG  
 Document # 160001170  
 MONA A. FOLEY, CLERK  
*Mona A. Foley*, Clerk

2 LandTech Resources, Inc.  
 recorded on 01/16/2016