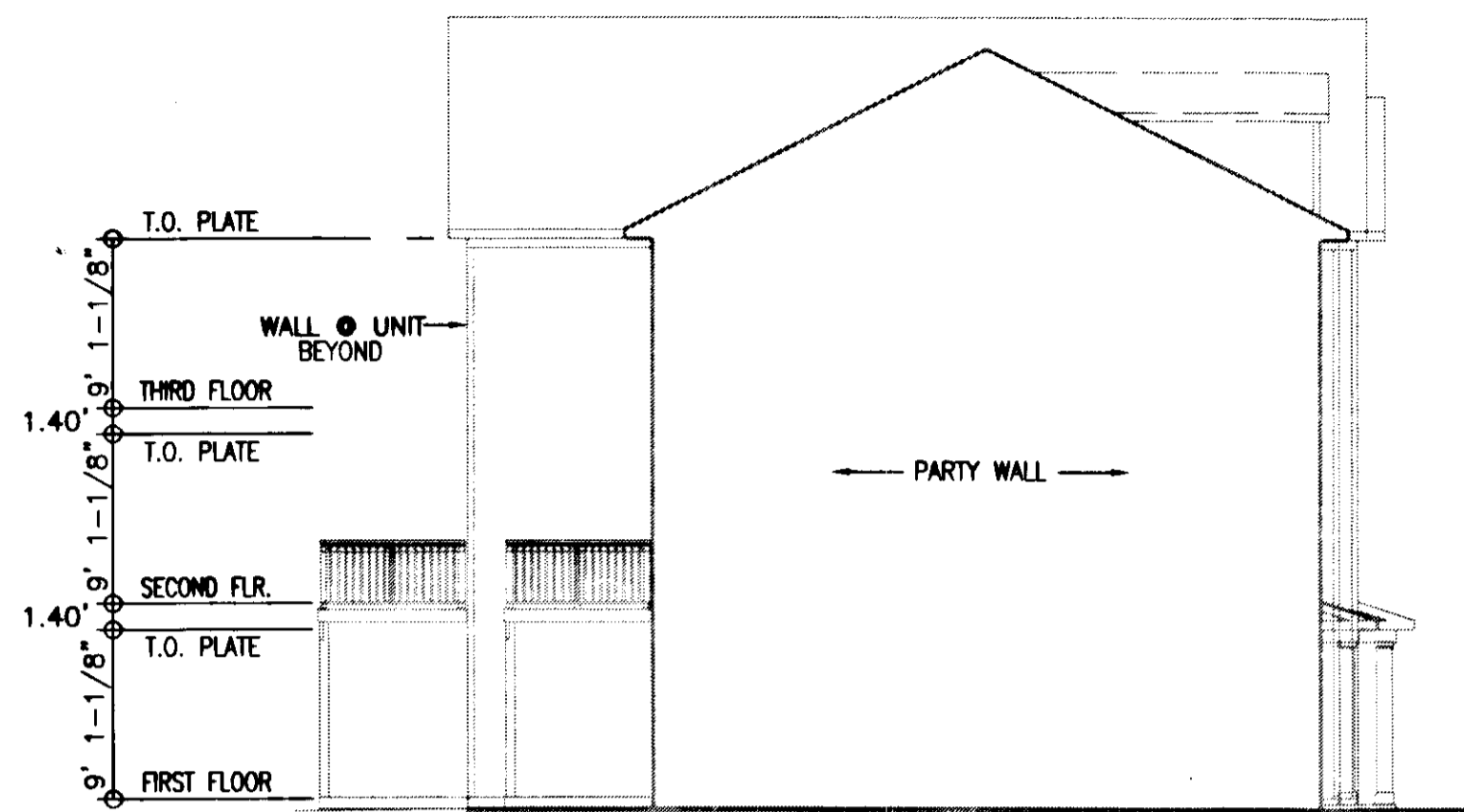
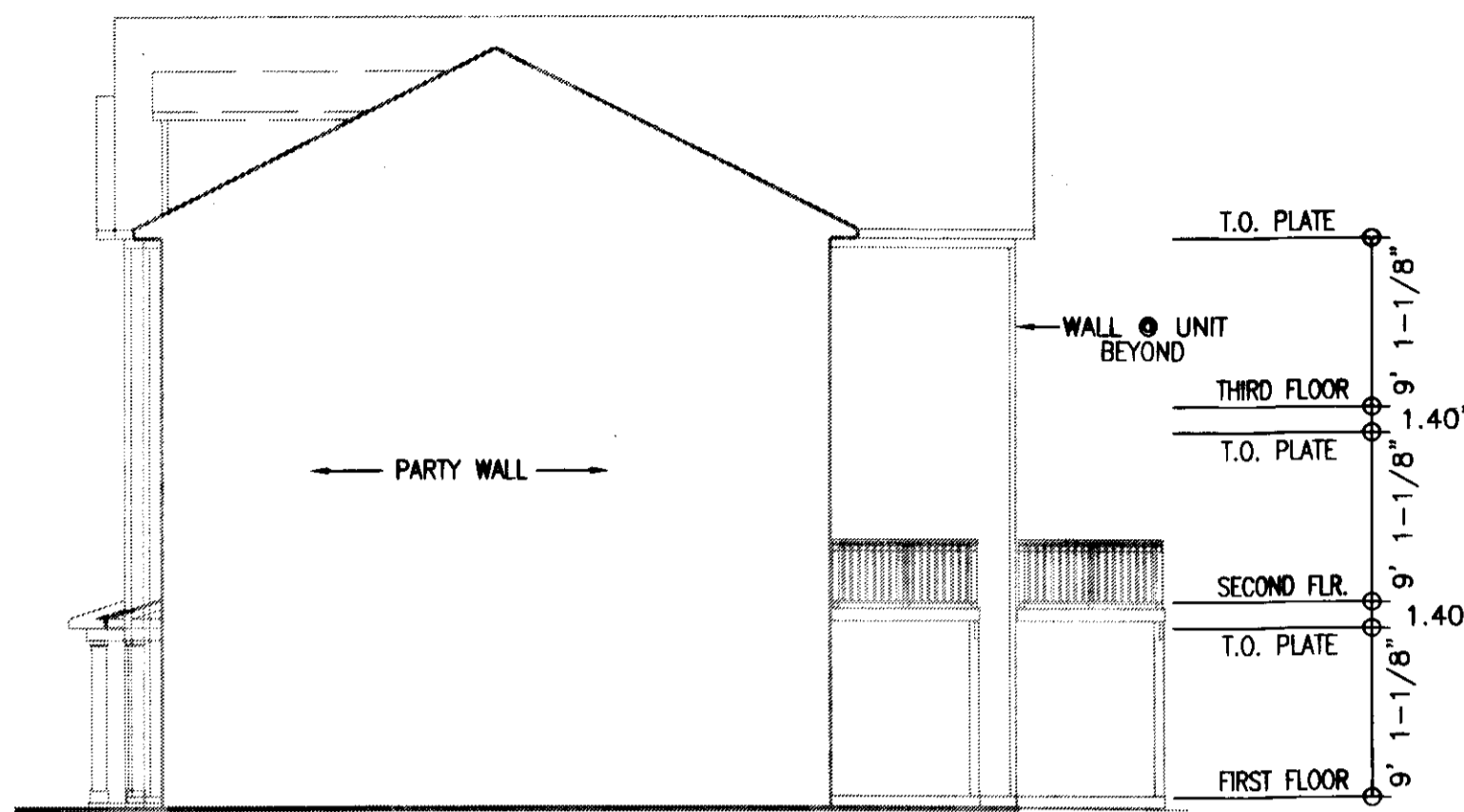


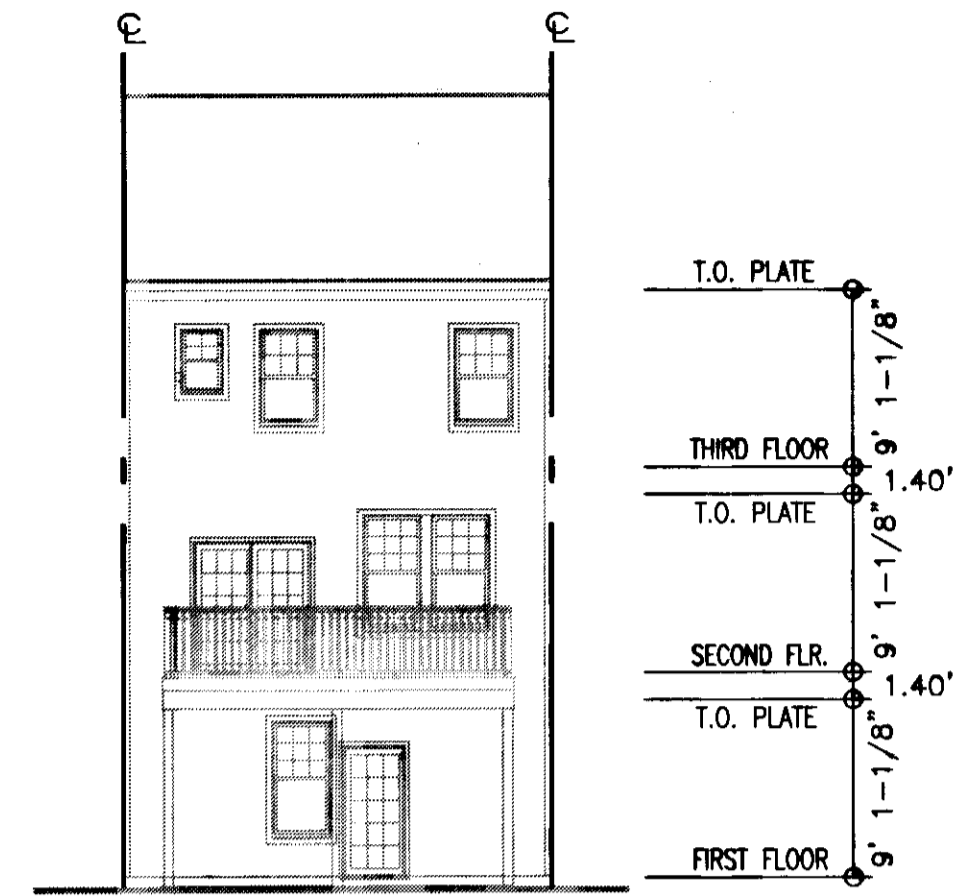
160001088



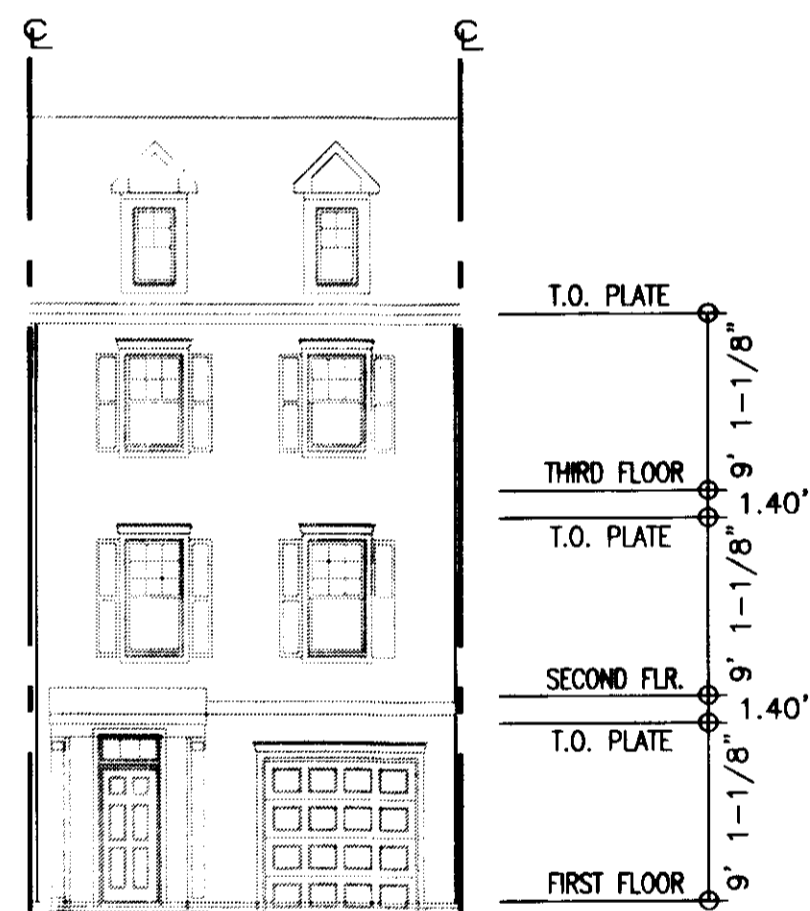
RIGHT SIDE ELEVATION



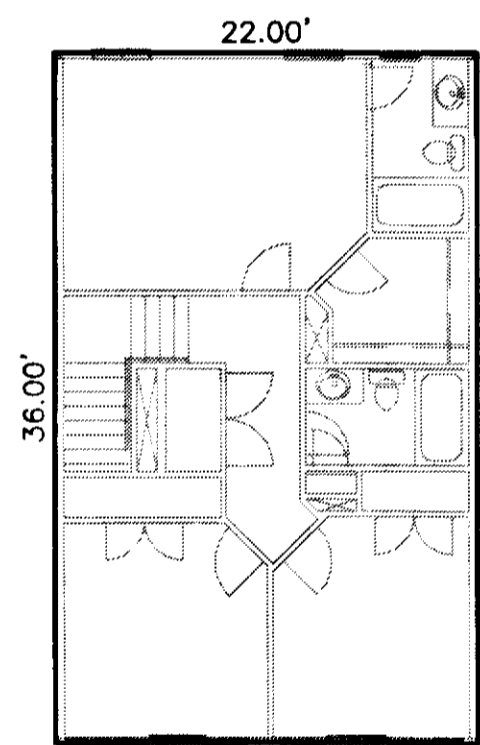
LEFT SIDE ELEVATION



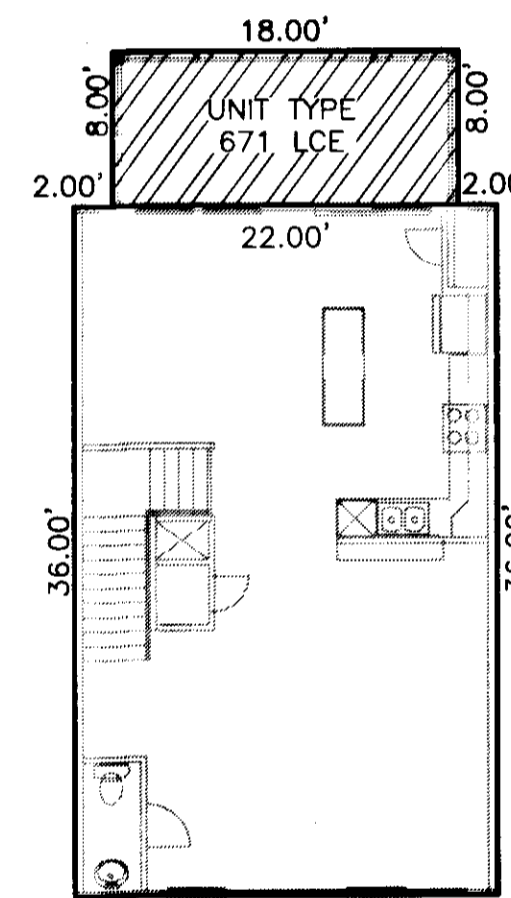
REAR ELEVATION



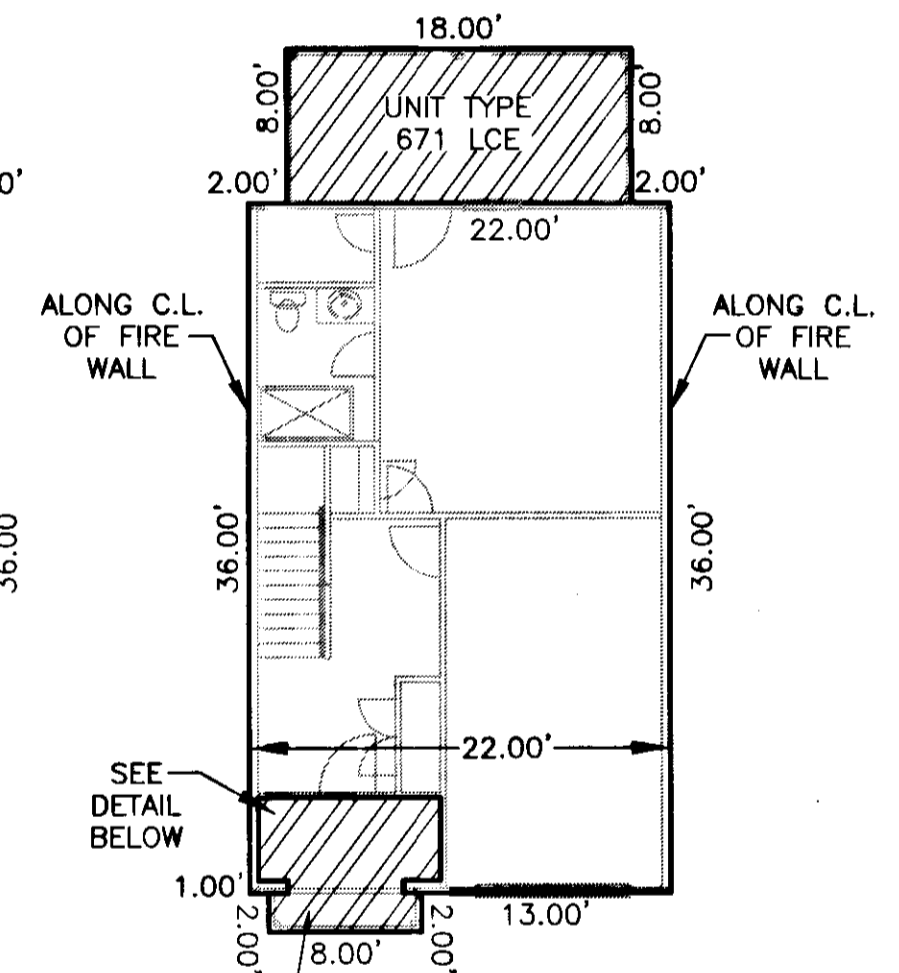
FRONT ELEVATION



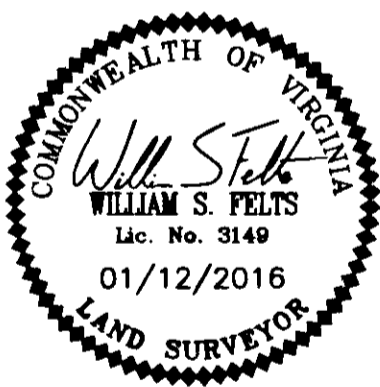
3RD FLOOR DETAIL



2ND FLOOR DETAIL



1ST FLOOR DETAIL



NOTE:
BUILDING DIMENSIONS AND ELEVATIONS SHOWN ARE BASED ON ARCHITECTURAL PLANS PREPARED BY JAMES WENTLING-ARCHITECT. FLOOR DETAIL DIMENSIONS ARE TO FRAMING LINE.

SURVEYORS CERTIFICATE

I HEREBY CERTIFY THAT TO THE BEST OF MY KNOWLEDGE OR BELIEF, THIS PLAN IS ACCURATE AND COMPLIES WITH THE PROVISIONS OF SECTION 55-79.58 (B) OF THE CODE OF VIRGINIA 1950 AS AMENDED AND THAT ALL UNITS DEPICTED HEREON HAVE BEEN SUBSTANTIALLY COMPLETED.

William S. Felts
WILLIAM S. FELTS LIC. #3149

01/12/16
DATE

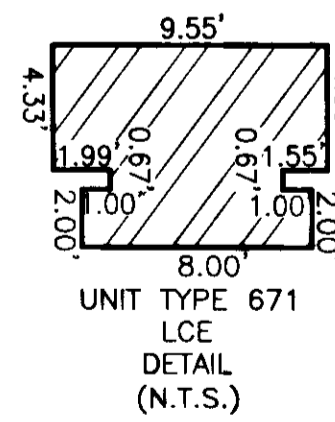
City of Williamsburg & County of James City
Circuit Court: This PLAT was recorded on

1-21-2016
at 3:13 PM, PB PG

Document # 160001088
MONA A. FOLEY, CLERK

Mona A. Foley, Clerk

UNIT TYPE 671



UNIT TYPE 671
LCE
DETAIL
(N.T.S.)

UNIT TYPE 671
LIMITED COMMON
ELEMENT
(LCE)

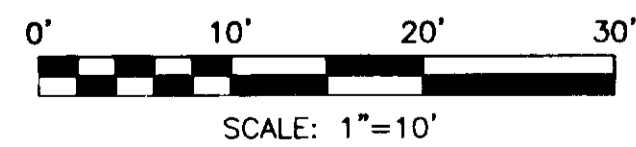
2 Large/Small Plates Recorded
herewith as # 160001088

**PLAN OF
UNIT TYPE 671
GOVERNOR'S GROVE AT FIVE FORKS
A CONDOMINIUM**
LOCATED IN THE BERKELEY DISTRICT
JAMES CITY COUNTY, VIRGINIA

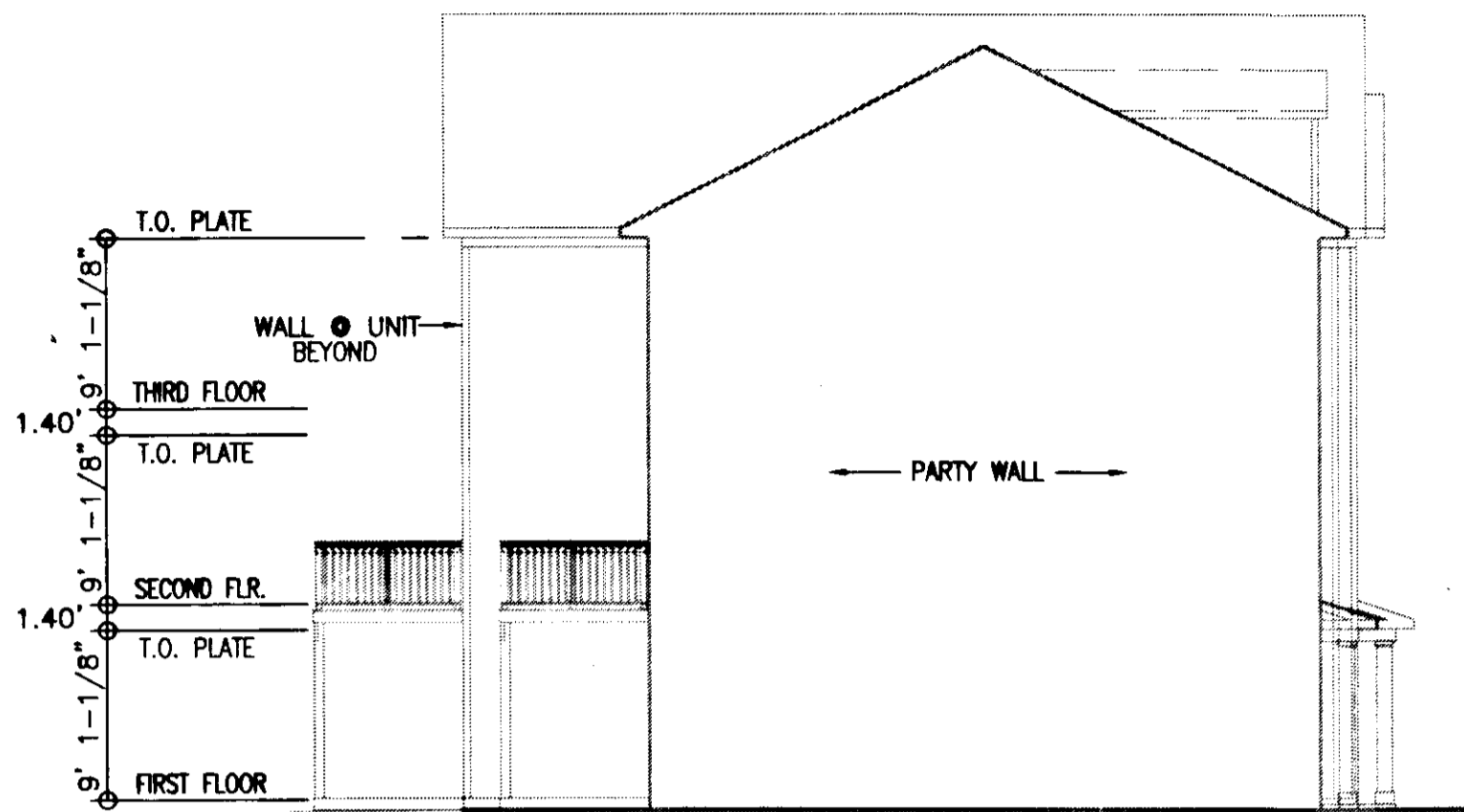
DATE: 01/12/16 SCALE: 1" = 10' JOB# 06-460
SHEET: 1 OF 2

**LandTech
Resources, Inc.**
Surveying • Engineering • GPS

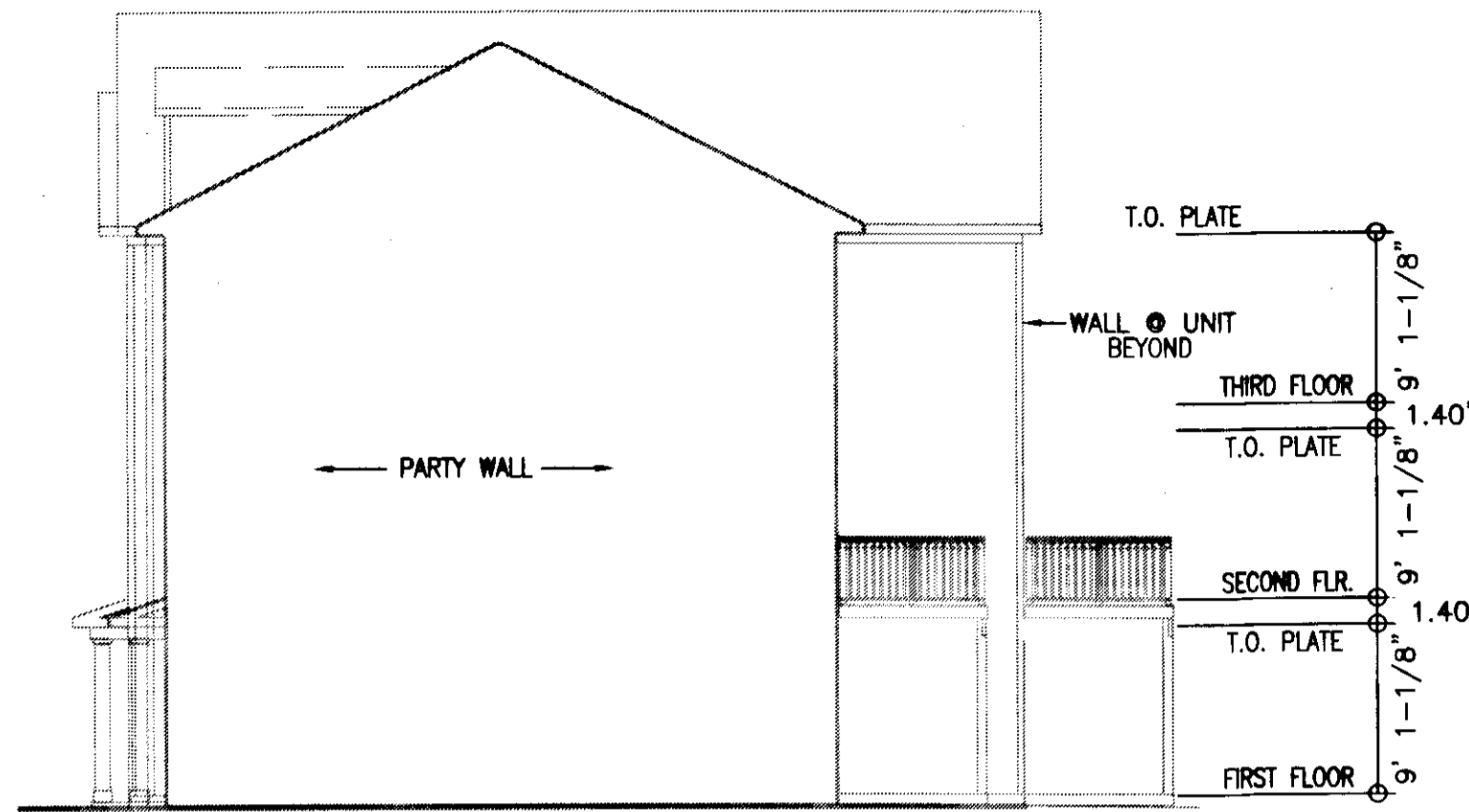
3925 Midlands Road, Williamsburg, VA 23188
Phone: (757) 565-1677 Fax: (757) 565-0782
web: landtechresources.com



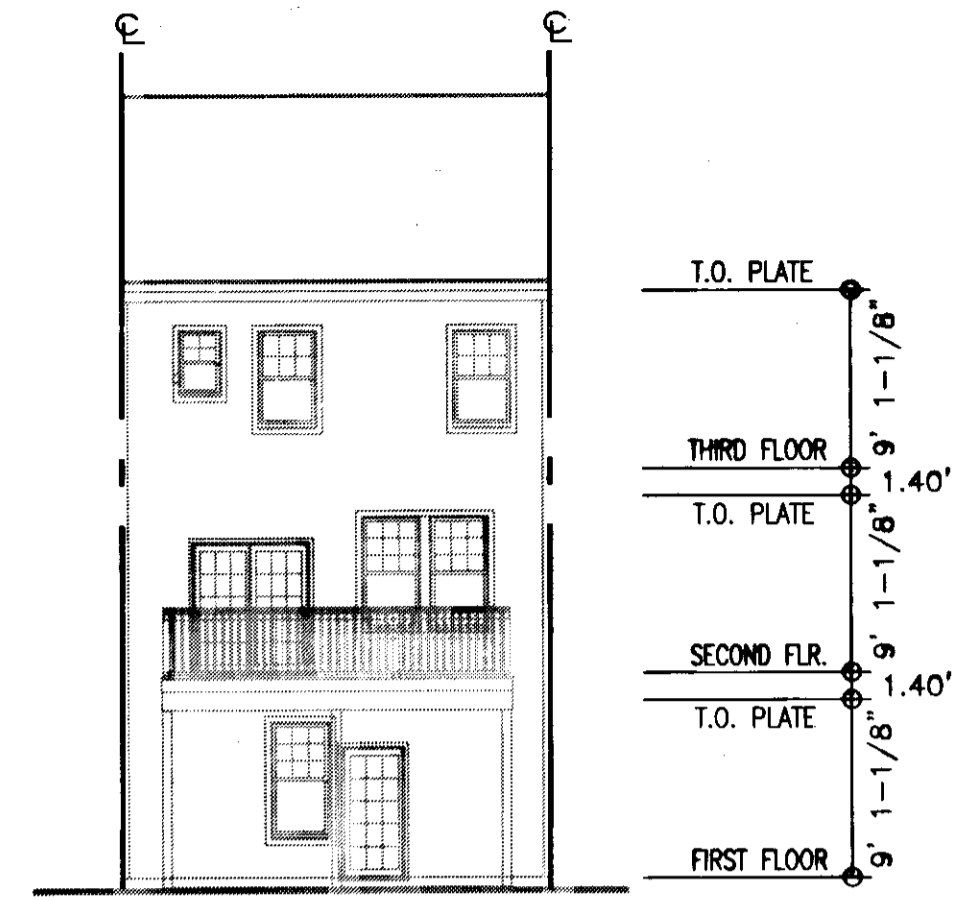
160001088



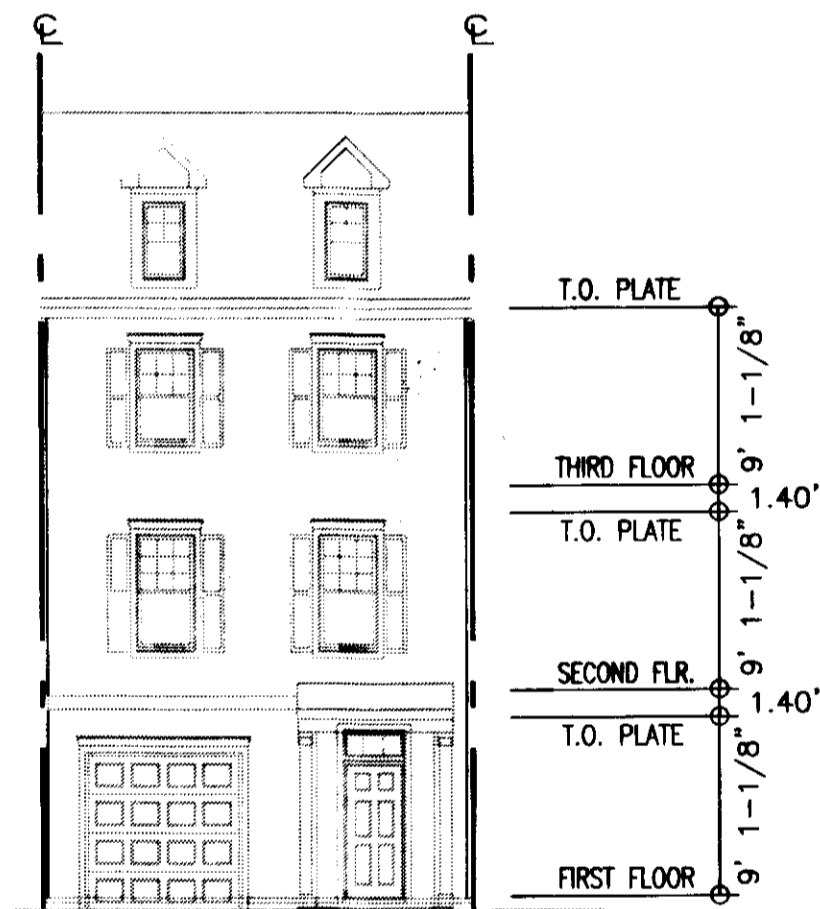
RIGHT SIDE ELEVATION



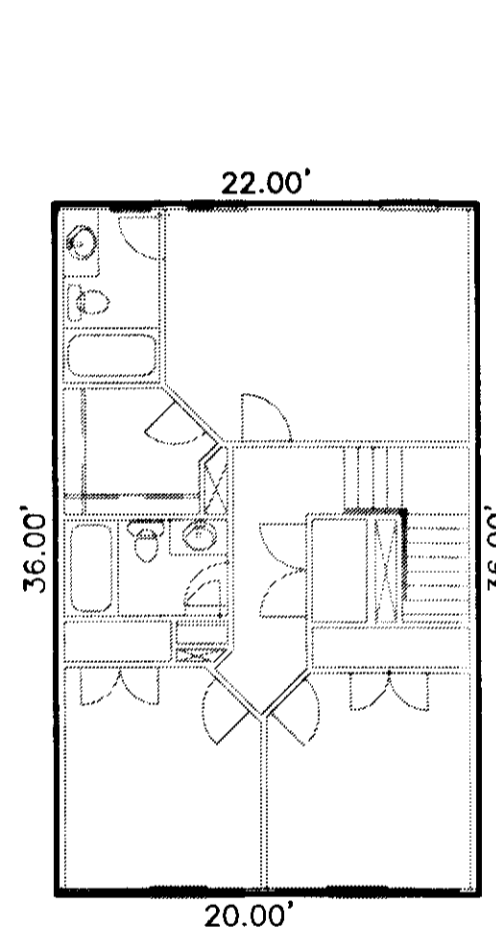
LEFT SIDE ELEVATION



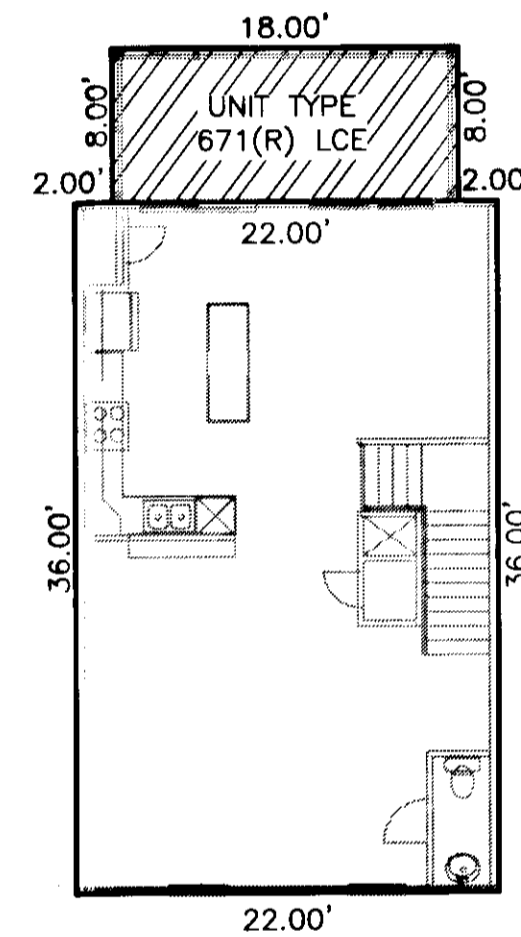
REAR ELEVATION



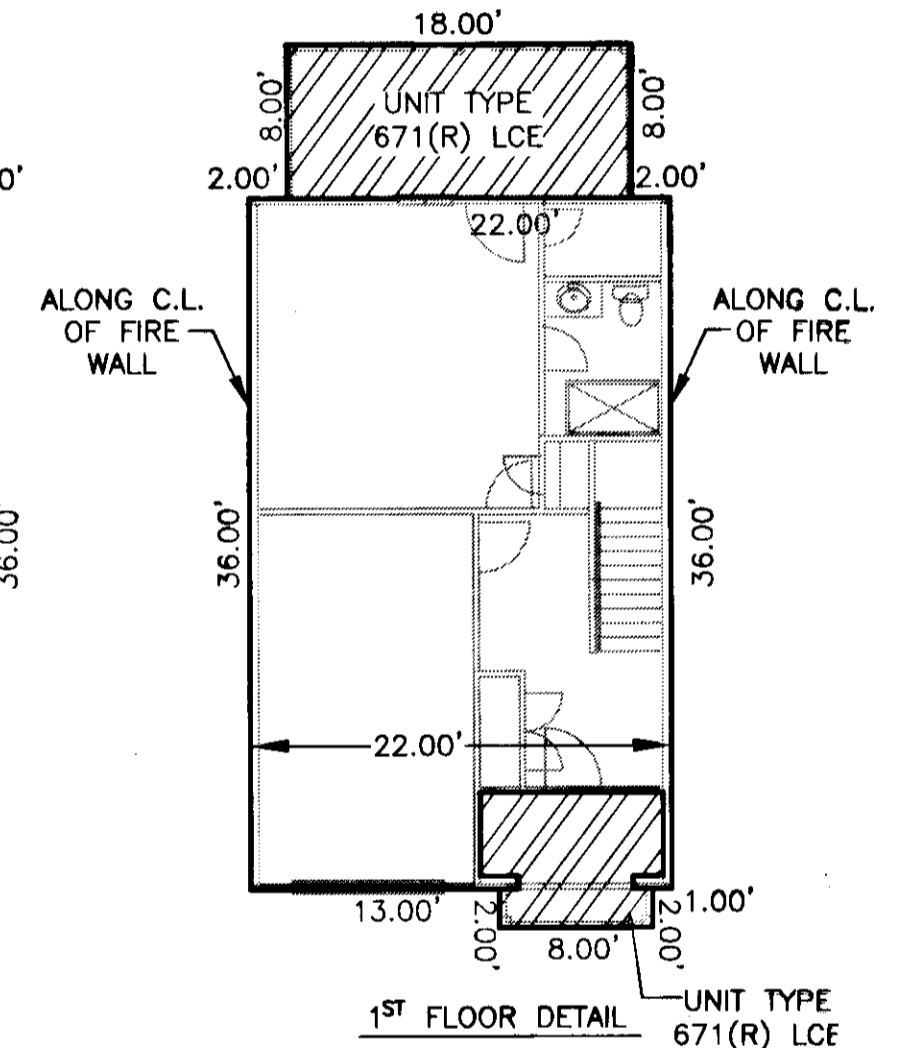
FRONT ELEVATION



3RD FLOOR DETAIL

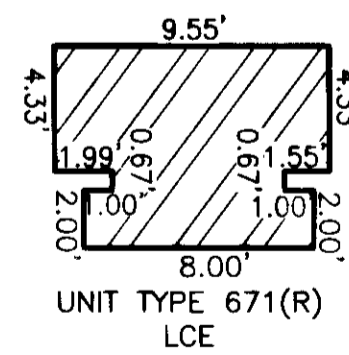


2ND FLOOR DETAIL



1ST FLOOR DETAIL

UNIT TYPE 671(R)



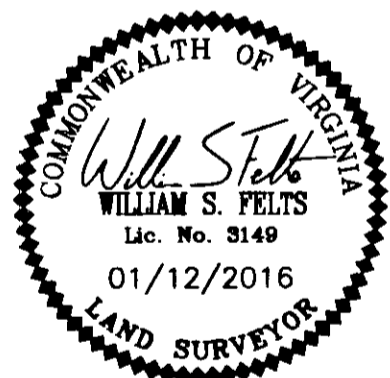
UNIT TYPE 671(R) LCE

PLAN OF
UNIT TYPE 671(R)
GOVERNOR'S GROVE AT FIVE FORKS
A CONDOMINIUM
LOCATED IN THE BERKELEY DISTRICT
JAMES CITY COUNTY, VIRGINIA

DATE: 01/12/16 SCALE: 1" = 10' JOB# 06-460
SHEET: 2 OF 2

LandTech
Resources, Inc.
Surveying • Engineering • GPS

3925 Midlands Road, Williamsburg, VA 23188
Phone: (757) 565-1677 Fax: (757) 565-0782
web: landtechresources.com



NOTE:
BUILDING DIMENSIONS AND ELEVATIONS SHOWN ARE BASED ON ARCHITECTURAL PLANS PREPARED BY JAMES WENTLING-ARCHITECT. FLOOR DETAIL DIMENSIONS ARE TO FRAMING LINE.

SURVEYORS CERTIFICATE

I HEREBY CERTIFY THAT TO THE BEST OF MY KNOWLEDGE OR BELIEF, THIS PLAN IS ACCURATE AND COMPLIES WITH THE PROVISIONS OF SECTION 55-79.58 (B) OF THE CODE OF VIRGINIA 1950 AS AMENDED AND THAT ALL UNITS DEPICTED HEREON HAVE BEEN SUBSTANTIALLY COMPLETED.

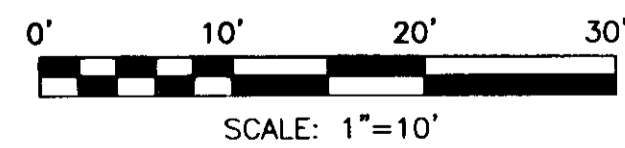
William S. Felts
WILLIAM S. FELTS LIC. #3149

01/12/16
DATE

City of Williamsburg & County of James City
Circuit Court: This PLAT was recorded on
1-21-2016
at 3:13 AM/PM, PB PG
Document # 160001088
MONA A. FOLEY, CLERK

2 Large/Small Plates Recorded
Permitted as 160001088

UNIT TYPE 671(R) LIMITED COMMON ELEMENT (LCE)



SCALE: 1"=10'

Mona A. Foley, Clerk