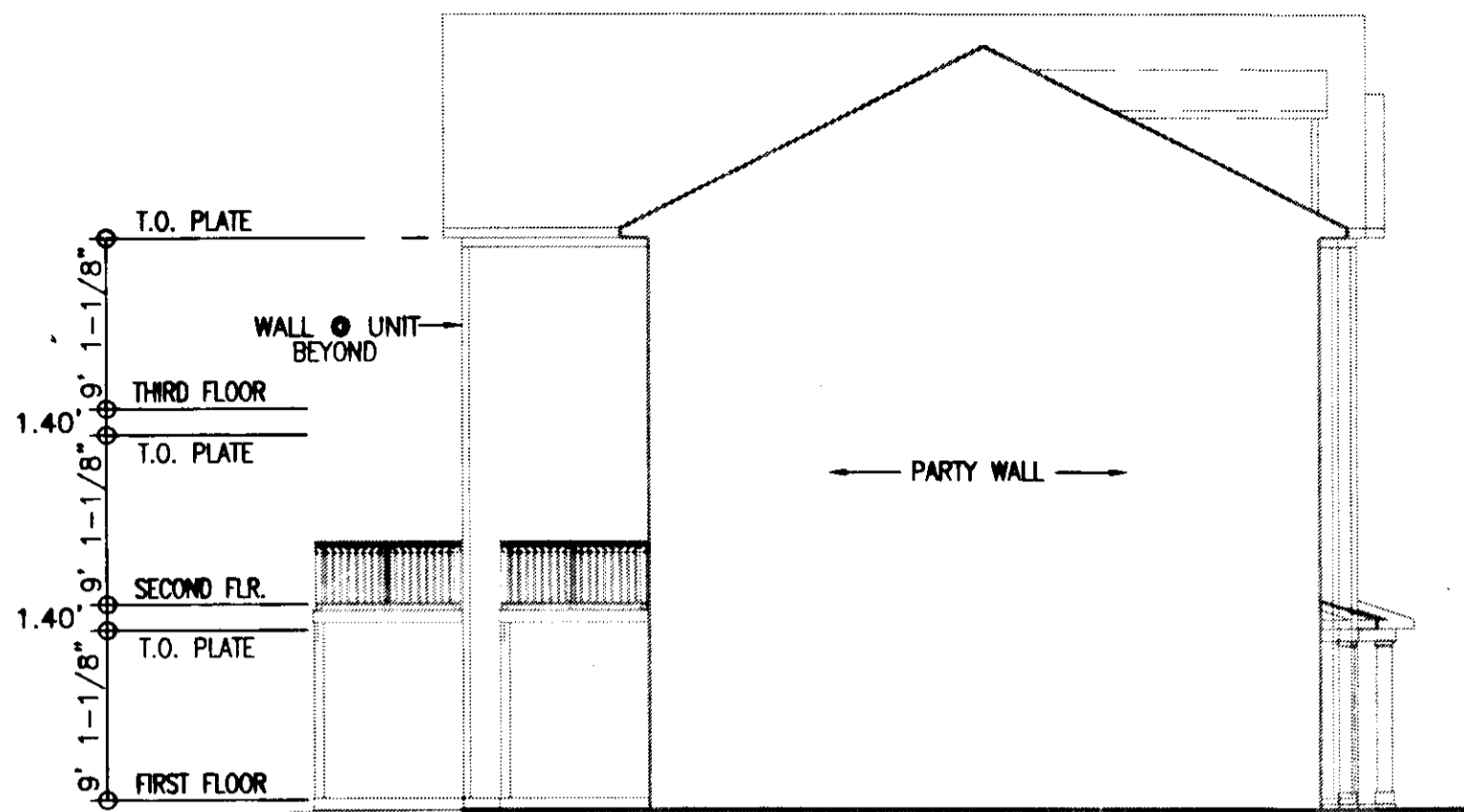
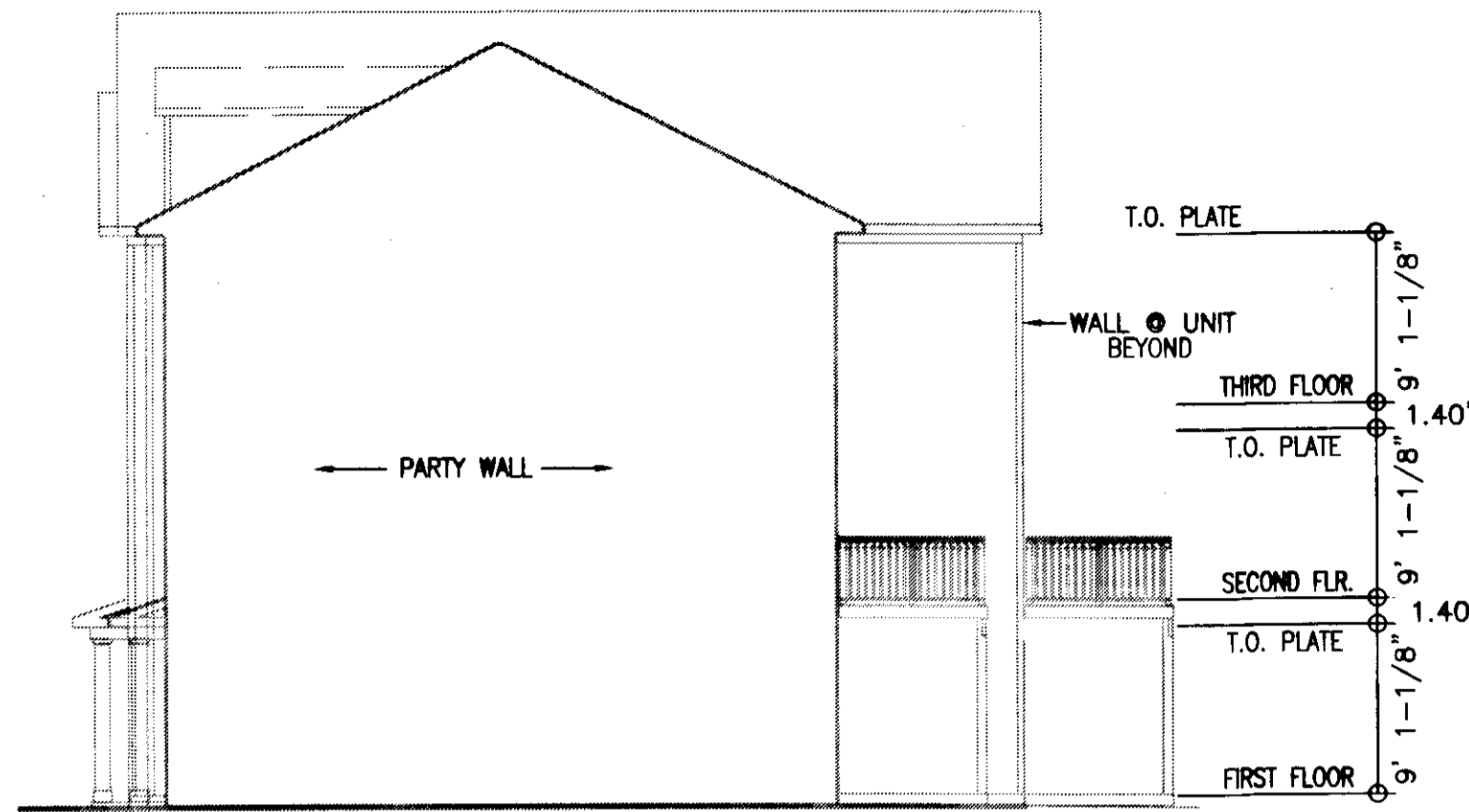


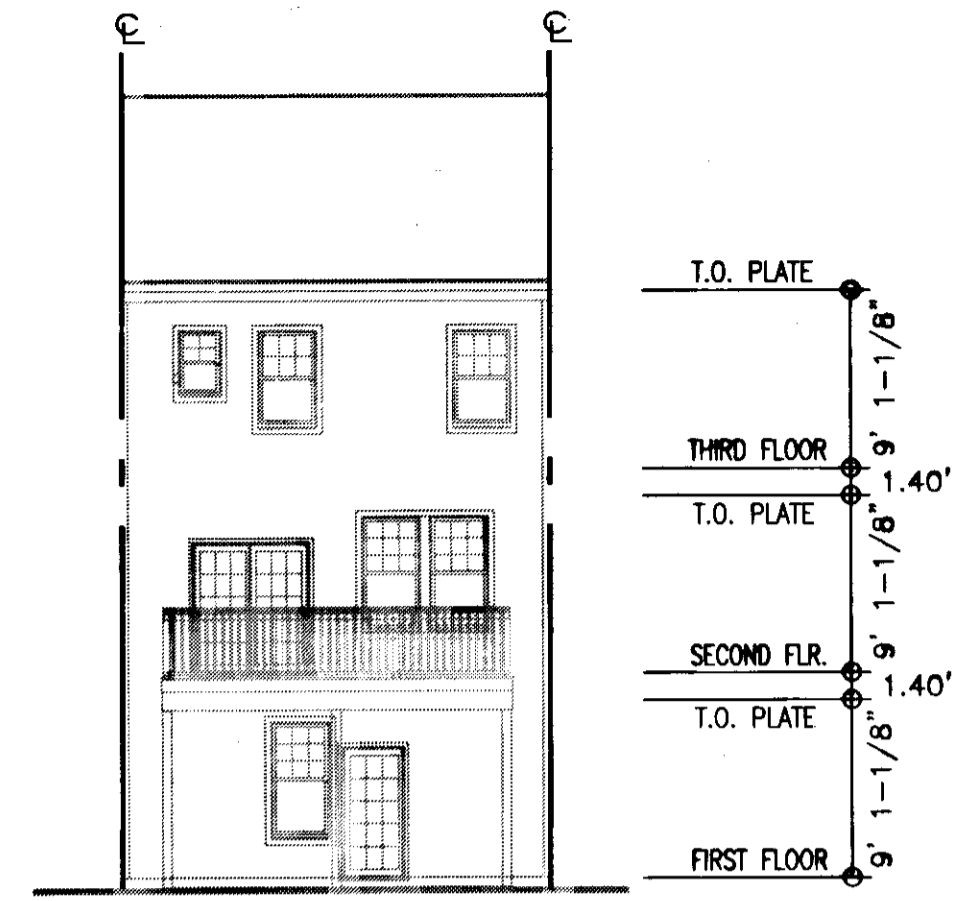
160001088



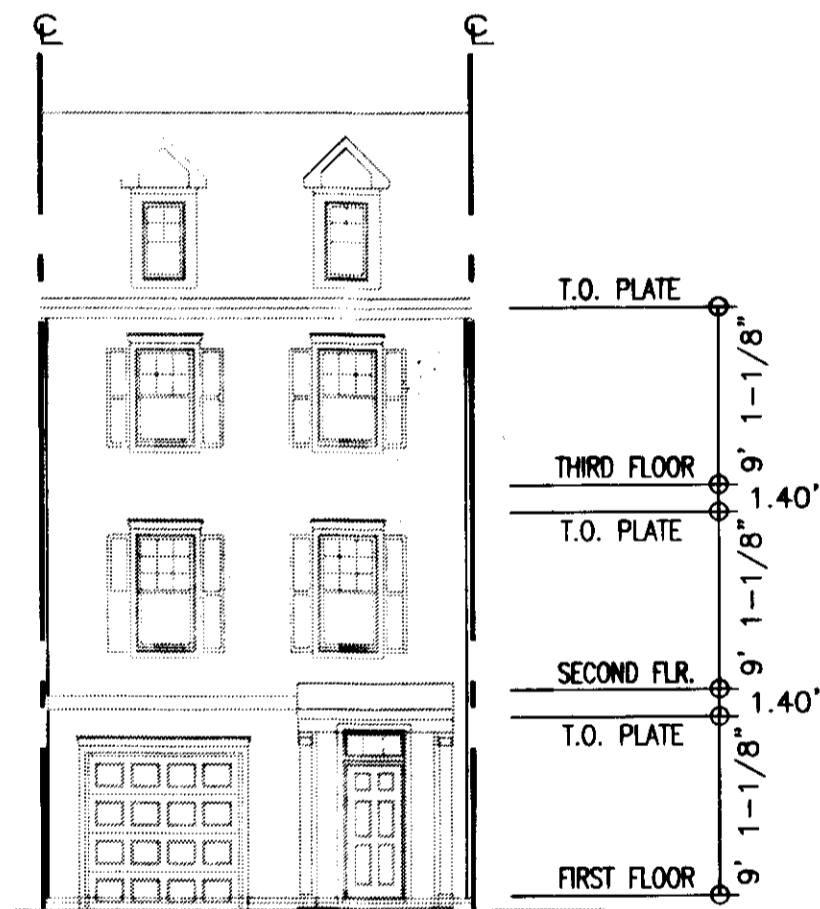
RIGHT SIDE ELEVATION



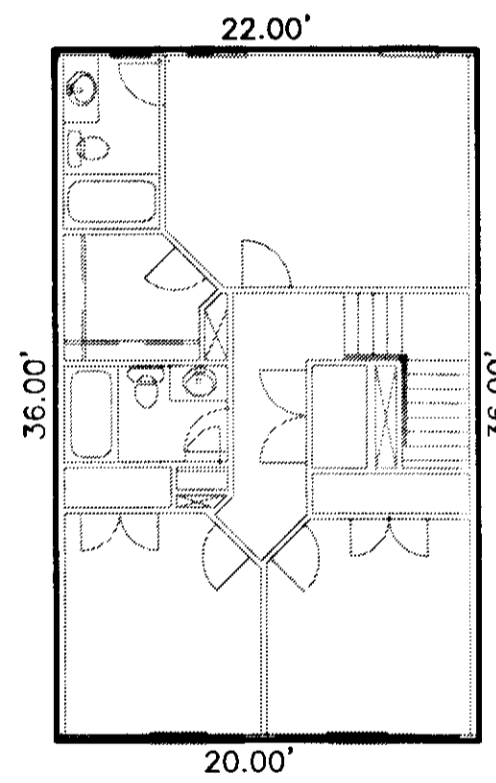
LEFT SIDE ELEVATION



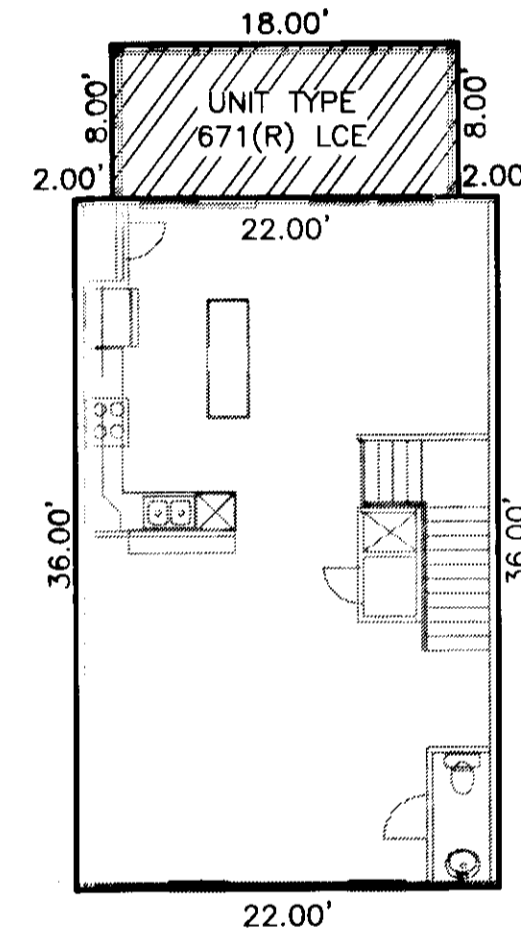
REAR ELEVATION



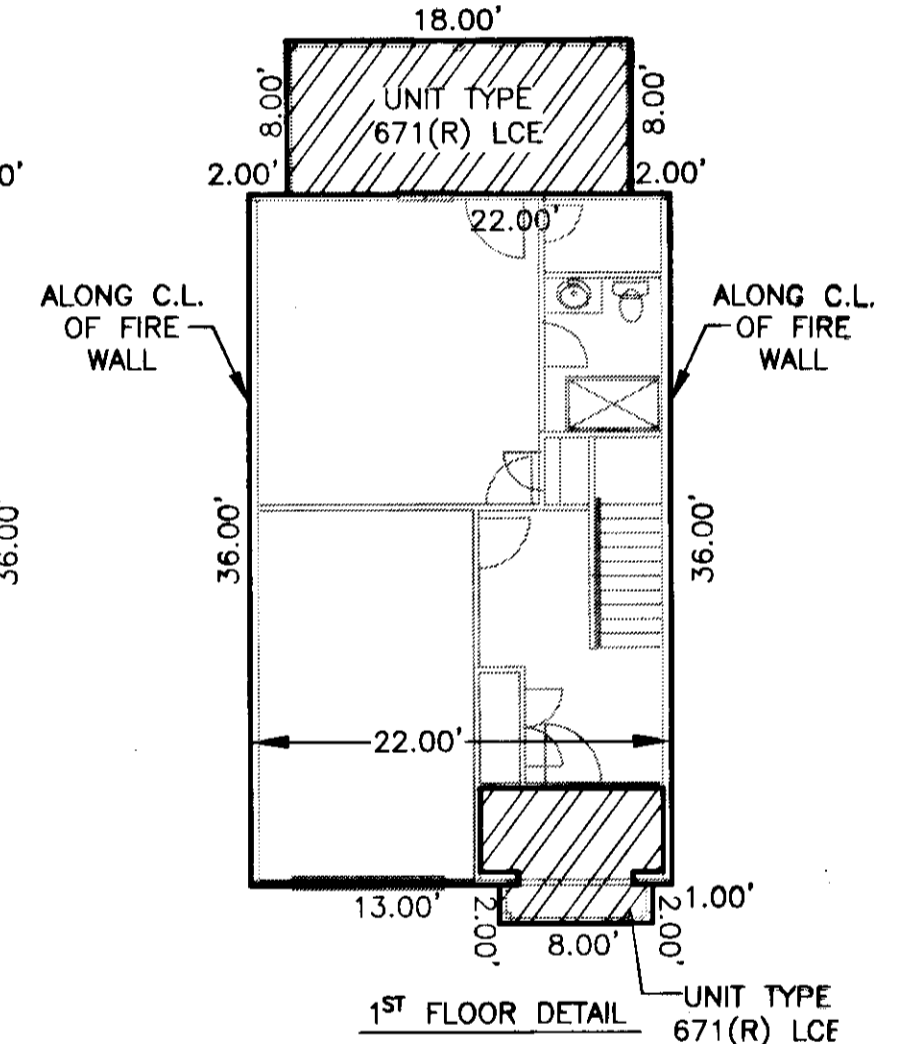
FRONT ELEVATION



3<sup>RD</sup> FLOOR DETAIL

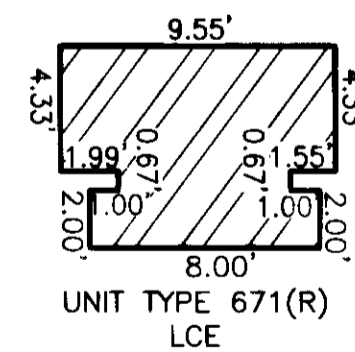


2<sup>ND</sup> FLOOR DETAIL



1<sup>ST</sup> FLOOR DETAIL

UNIT TYPE 671(R)



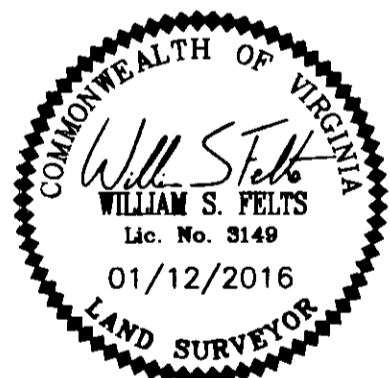
UNIT TYPE 671(R) LCE

PLAN OF  
UNIT TYPE 671(R)  
GOVERNOR'S GROVE AT FIVE FORKS  
A CONDOMINIUM  
LOCATED IN THE BERKELEY DISTRICT  
JAMES CITY COUNTY, VIRGINIA

DATE: 01/12/16 SCALE: 1" = 10' JOB# 06-460  
SHEET: 2 OF 2

**LandTech**  
Resources, Inc.  
Surveying • Engineering • GPS

3925 Midlands Road, Williamsburg, VA 23188  
Phone: (757) 565-1677 Fax: (757) 565-0782  
web: landtechresources.com



**NOTE:**  
BUILDING DIMENSIONS AND ELEVATIONS SHOWN ARE BASED ON ARCHITECTURAL PLANS PREPARED BY JAMES WENTLING-ARCHITECT. FLOOR DETAIL DIMENSIONS ARE TO FRAMING LINE.

**SURVEYORS CERTIFICATE**

I HEREBY CERTIFY THAT TO THE BEST OF MY KNOWLEDGE OR BELIEF, THIS PLAN IS ACCURATE AND COMPLIES WITH THE PROVISIONS OF SECTION 55-79.58 (B) OF THE CODE OF VIRGINIA 1950 AS AMENDED AND THAT ALL UNITS DEPICTED HEREON HAVE BEEN SUBSTANTIALLY COMPLETED.

*William S. Felts*  
WILLIAM S. FELTS LIC. #3149

01/12/16  
DATE

City of Williamsburg & County of James City  
Circuit Court: This PLAT was recorded on  
1-21-2016  
at 3:13 AM/PM, PB — PG —  
Document # 160001088  
MONA A. FOLEY, CLERK

2 Large/Small Plates Recorded  
Permitted as 160001088

UNIT TYPE 671(R) LIMITED COMMON ELEMENT (LCE)

*Mona A. Foley*, Clerk

