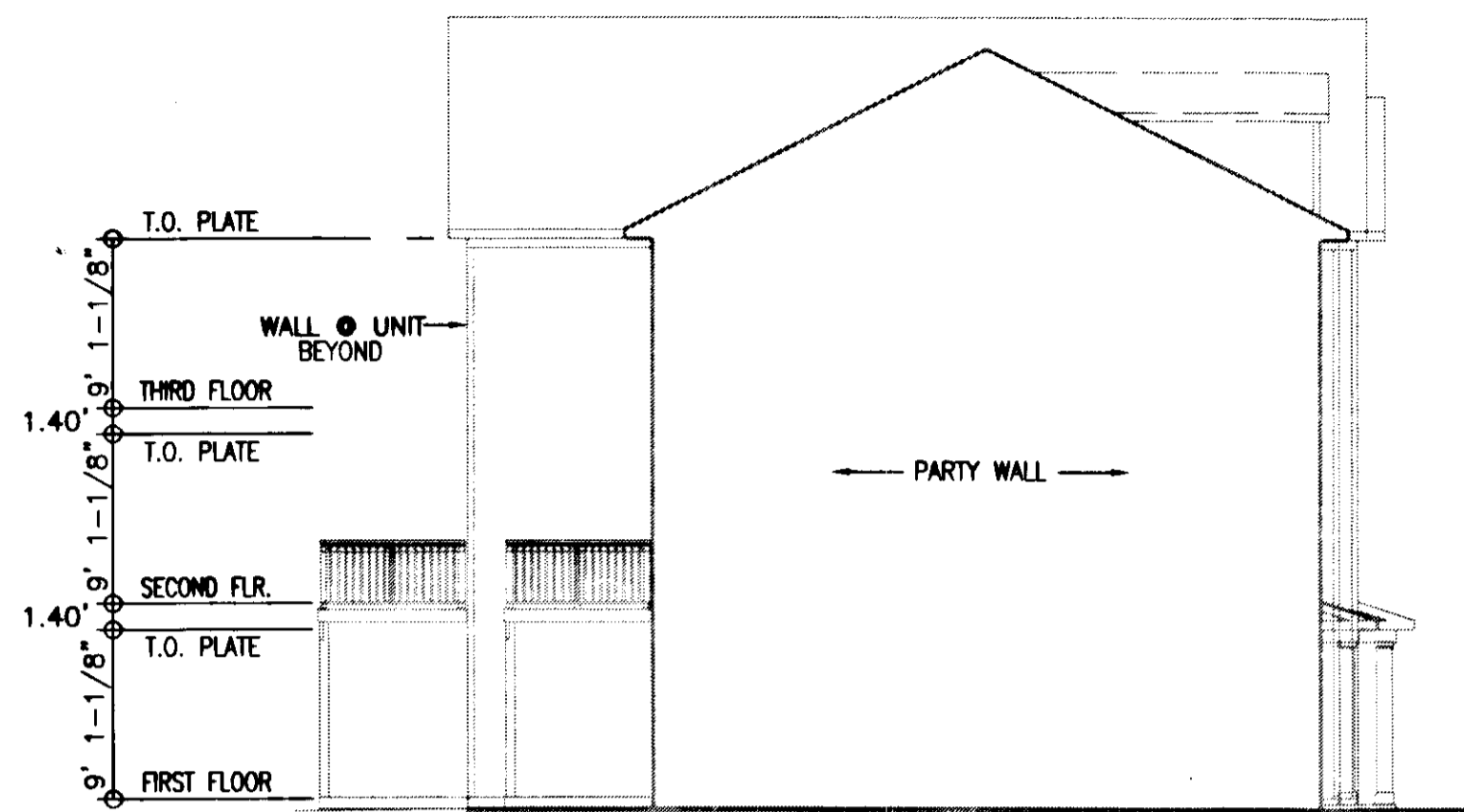
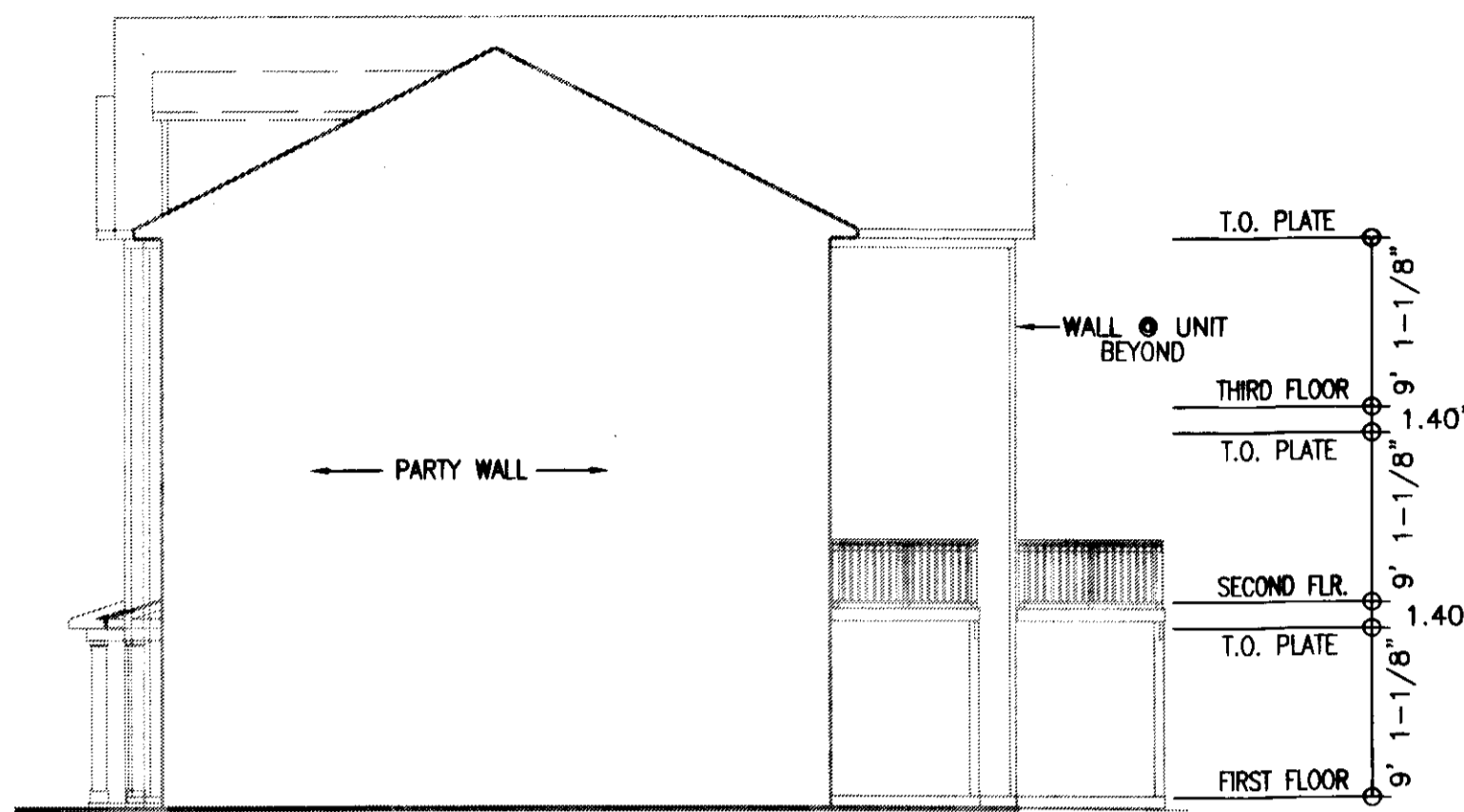


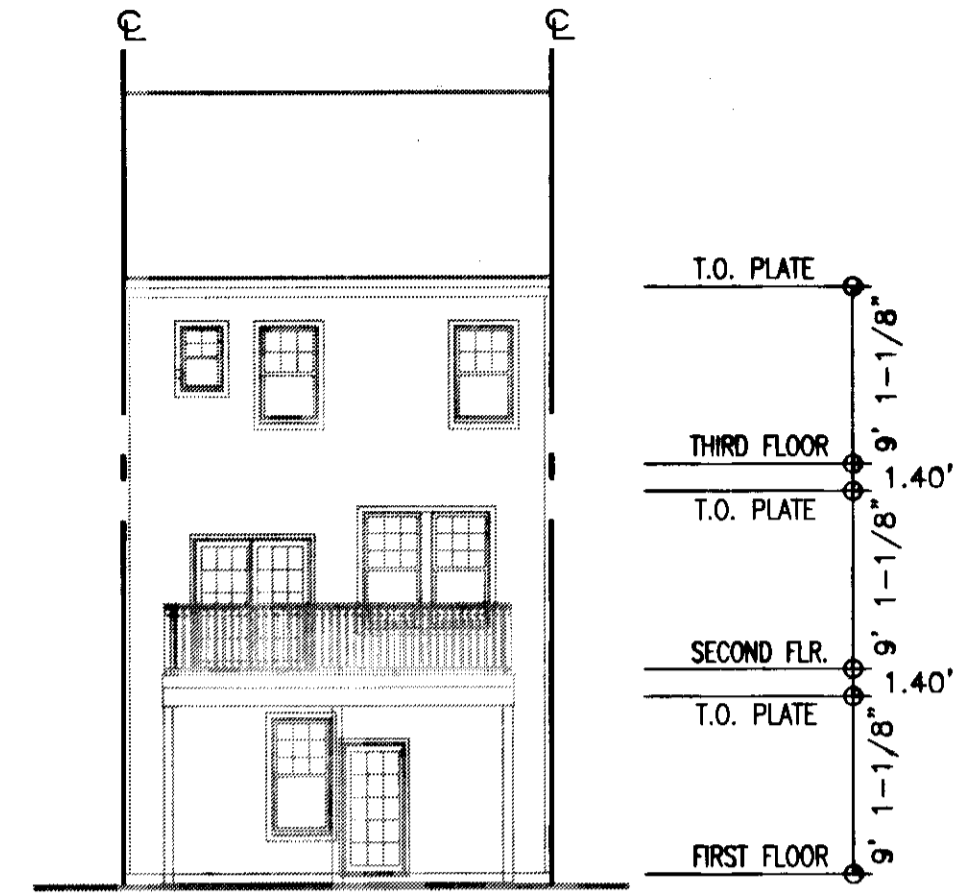
160001088



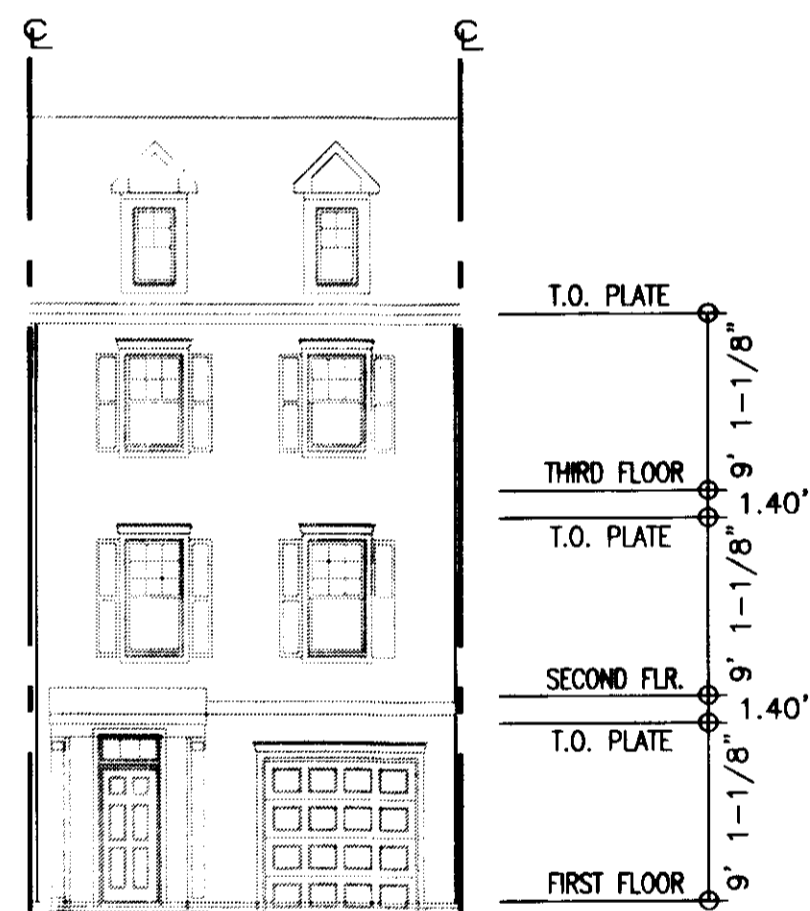
RIGHT SIDE ELEVATION



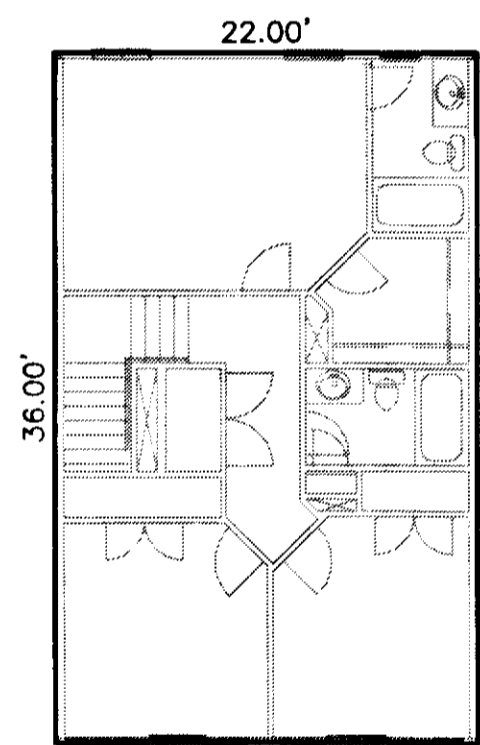
LEFT SIDE ELEVATION



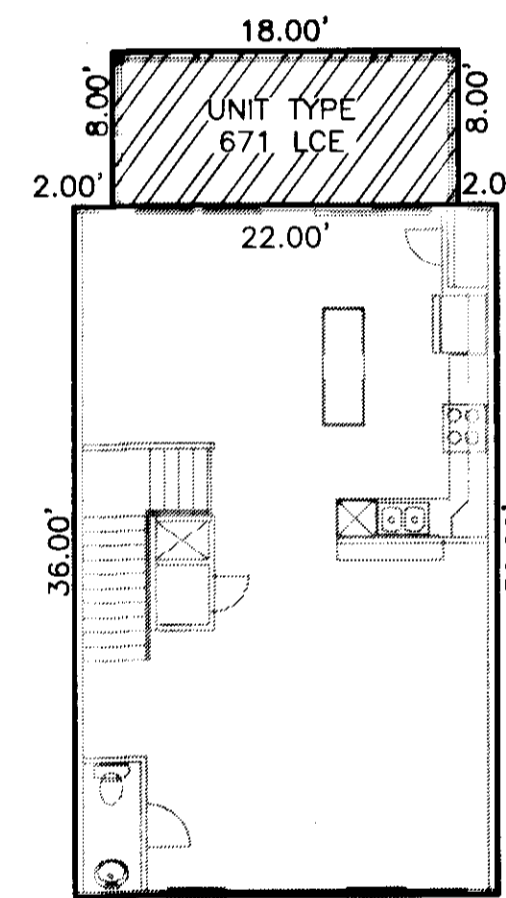
REAR ELEVATION



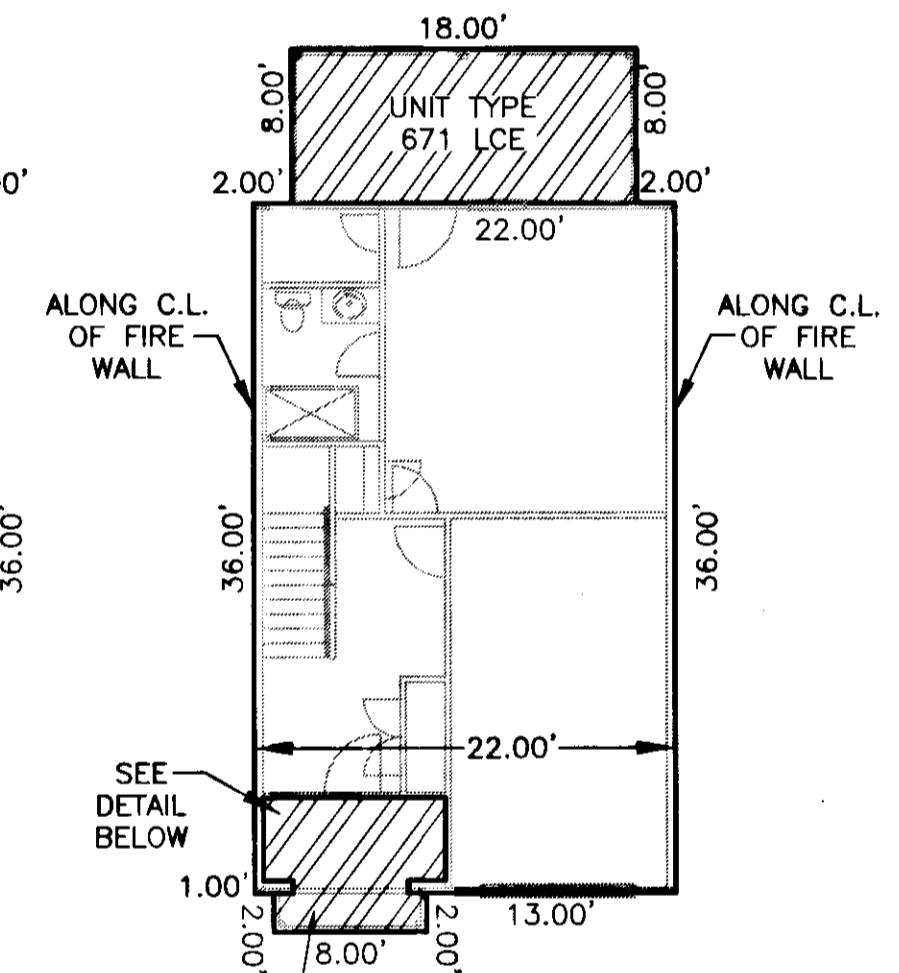
FRONT ELEVATION



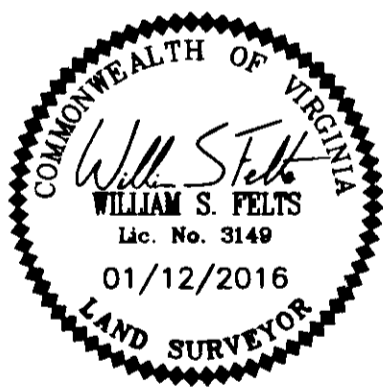
3RD FLOOR DETAIL



2ND FLOOR DETAIL



1ST FLOOR DETAIL



NOTE:
BUILDING DIMENSIONS AND ELEVATIONS SHOWN ARE BASED ON ARCHITECTURAL PLANS PREPARED BY JAMES WENTLING-ARCHITECT. FLOOR DETAIL DIMENSIONS ARE TO FRAMING LINE.

SURVEYORS CERTIFICATE

I HEREBY CERTIFY THAT TO THE BEST OF MY KNOWLEDGE OR BELIEF, THIS PLAN IS ACCURATE AND COMPLIES WITH THE PROVISIONS OF SECTION 55-79.58 (B) OF THE CODE OF VIRGINIA 1950 AS AMENDED AND THAT ALL UNITS DEPICTED HEREON HAVE BEEN SUBSTANTIALLY COMPLETED.

William S. Felts
WILLIAM S. FELTS LIC. #3149

01/12/16
DATE

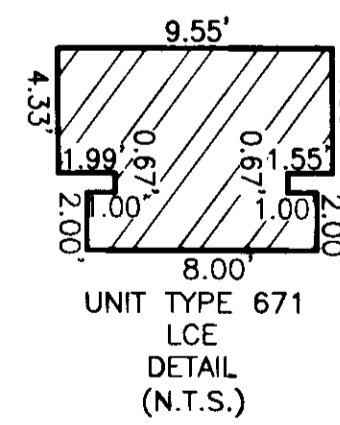
City of Williamsburg & County of James City
Circuit Court: This PLAT was recorded on

1-21-2016
at 3:13 PM, PB PG

Document # 160001088
MONA A. FOLEY, CLERK

Mona A. Foley, Clerk

UNIT TYPE 671



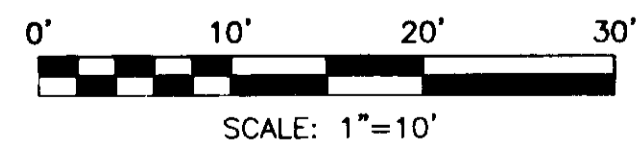
UNIT TYPE 671
LIMITED COMMON
ELEMENT
(LCE)

PLAN OF
UNIT TYPE 671
GOVERNOR'S GROVE AT FIVE FORKS
A CONDOMINIUM
LOCATED IN THE BERKELEY DISTRICT
JAMES CITY COUNTY, VIRGINIA

DATE: 01/12/16 SCALE: 1" = 10' JOB# 06-460
SHEET: 1 OF 2



3925 Midlands Road, Williamsburg, VA 23188
Phone: (757) 565-1677 Fax: (757) 565-0782
web: landtechresources.com



2 Large/Small Plates Recorded
herewith as # 160001088